



**Investment
Properties
Corporation**

**F O R S A L E
F O R L E A S E**



1989 Trade Center Way | Naples, FL 34109



***Climate Controlled Warehouse
on Prestigious
Trade Center Way!!***

This industrial zoned property boasts 18'-24' ceilings in the 7,200 SF climate-controlled warehouse. New electrical throughout and new HVAC valued over \$50,000. Parking lot has been recently resurfaced. New exterior paint and lighting. Includes three 14' high doors (5 garage doors total). Front office has 5 private offices, 2 restrooms, and its own smaller +/- 1,200 SF climate-controlled warehouse.

CONTACT  (239) 777-2020

Christine McManus, CCIM, SIOR
christine@ipcnaples.com

Investment Properties Corporation of Naples
3838 Tamiami Trail North Suite 402
Naples Florida 34103-3586
Tel: 239-261-3400 Fax: 249-261-7579 www.ipcnaples.com

Licensed Real Estate Broker



The statement and figures presented herein, while not guaranteed, are secured from sources we believe authoritative. Subject to prior sale, lease, withdrawal and price change without notice.



**Investment
Properties
Corporation**

**F O R S A L E
F O R L E A S E**

SALE PRICE: \$3,875,000

BASE RENT: \$24.00 PSF NNN

CAM: \$4.19 PSF
(includes taxes and insurance, maintenance, and Trade Center Way HOA fees)

SIZE: 9,696 SF total
7,200 SF
with 420 SF office and climate controlled warehouse
2,496 SF
with offices, restrooms and climate controlled warehouse

LOT SIZE: .62 acres

YEAR BUILT: 1995

ZONING: Industrial

PARKING: 14 spaces

RE TAXES (2 units): \$16,710.92

CONDO DUES: \$300/qtr.

GARAGE DOORS: 5 total

CONTACT  **(239) 777-2020**

Christine McManus, CCIM, SIOR
christine@ipcnaples.com

1 - 10' X 10'
3 - 10' X 14'
1 - 10' X 12'

Investment Properties Corporation of Naples
3838 Tamiami Trail North Suite 402
Naples Florida 34103-3586
Tel: 239-261-3400 Fax: 249-261-7579 www.ipcnaples.com

Licensed Real Estate Broker

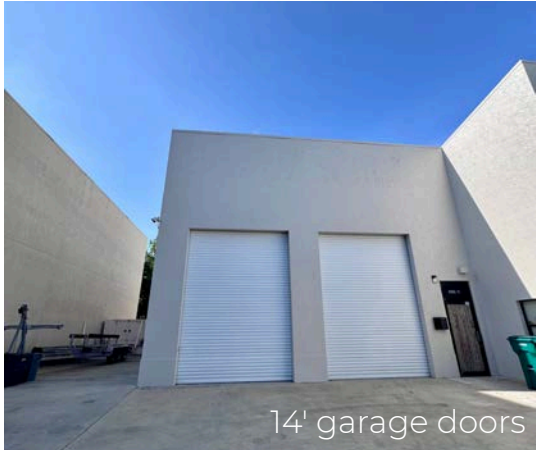


The statement and figures presented herein, while not guaranteed, are secured from sources we believe authoritative. Subject to prior sale, lease, withdrawal and price change without notice.



Investment Properties Corporation

FOR SALE
FOR LEASE



14' garage doors



Office

click here!



Google Maps



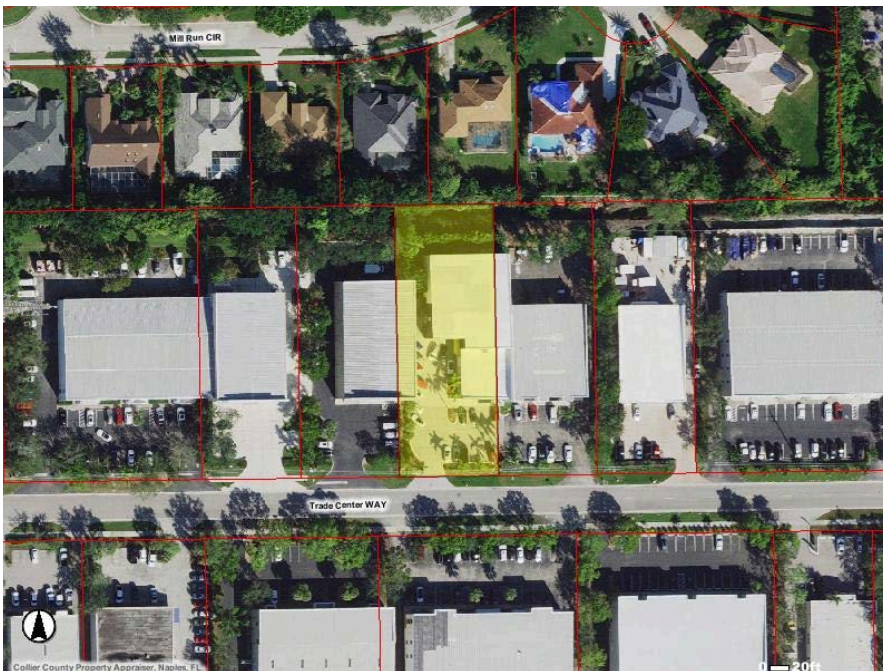
Office



Front Foyer



Warehouse



Climate-Controlled Warehouse