

# AME TELGE BUSINESS PARK

Tomball, Texas | Northwest Harris County

**±5,000 SF - ±24,000 SF OF SPEC WAREHOUSE SPACE AVAILABLE FOR SALE OR LEASE**



# Business Park Details



## October 2025 Occupancy

### BUILDING A

- 5,000 SF
- 22' eaves
- Two 14' x 16' OH Doors
- Canopy over storefront
- 14' x 16' overhead doors
- 200-amp power / 3 phase
- 4 windows (2-street; 2-court)
- 4' wainscoting on street side and store front

### BUILDING B

- 6,250 SF
- 22' eaves
- Two 14' x 16' OH Doors
- Canopy over storefront
- 14' x 16' overhead doors
- 200-amp power / 3 phase
- 4 windows (2-street; 2-court)
- 4' wainscoting on street side and store front

### BUILDING C

- 5,750 SF
- 22' eaves
- Two 14' x 16' OH Doors
- Canopy over storefront
- 14' x 16' overhead doors
- 200-amp power / 3 phase
- 4 windows (2-street; 2-court)
- 4' wainscoting on street side and store front

### BUILDING D

- 7,000 SF
- 22' eaves
- Two 14' x 16' OH Doors
- Canopy over storefront
- 14' x 16' overhead doors
- 200-amp power / 3 phase
- 4 windows (2-street; 2-court)
- 4' wainscoting on street side and store front

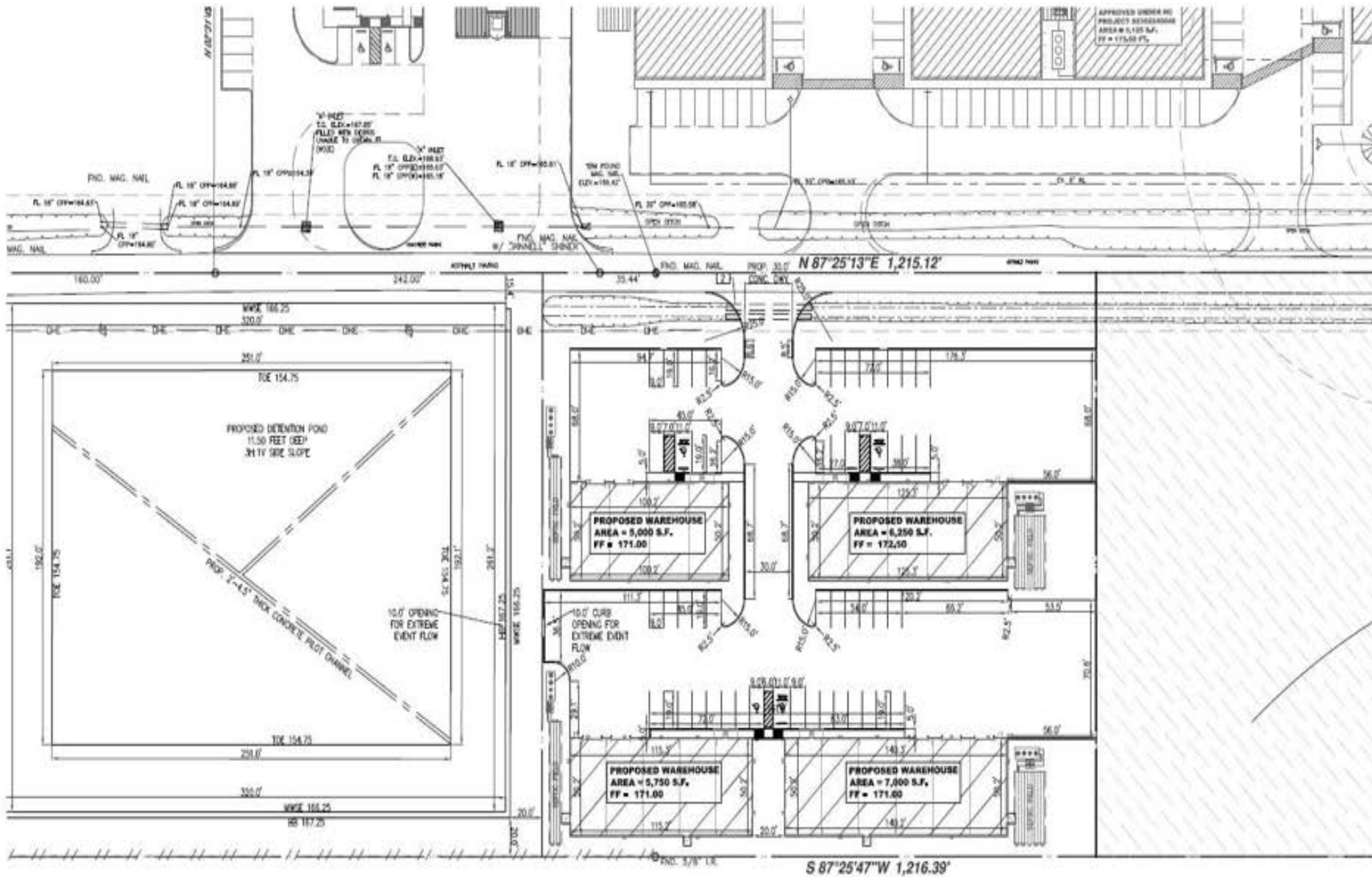
# Conveniently located in Northwest Harris County near TX 99/Grand Parkway and TX SH 249



**AME TELGE**  
BUSINESS PARK

DESTINATION	MILES
TX 99/GRAND PARKWAY	.9
TX 249	3.9
THE WOODLANDS	21.6
KATY	26.8
IAH	27
DOWNTOWN	33
GALLERIA	32
CONROE	32
AUSTIN	140
SAN ANTONIO	196
DALLAS-FORT WORTH	224

# Civil Site Plan



# AME TELGE BUSINESS PARK

FOR MORE INFORMATION,  
PLEASE CONTACT:

**Boomer White**

President

+1 713 826 5033

[boomer.white@revkocre.com](mailto:boomer.white@revkocre.com)

**Jason Pate**

Industrial Broker

+1 214 632 2242

[jason@jsellersrealestate.com.com](mailto:jason@jsellersrealestate.com.com)



All rights reserved. This information has been obtained from sources believed reliable, but has not been verified for accuracy or completeness. You should conduct a careful, independent investigation of the property and verify all information. Any reliance on this information is solely at your own risk. All other marks displayed on this document are the property of their respective owners. Photos herein are the property of their respective owners. Use of these images without the express written consent of the owner is prohibited.