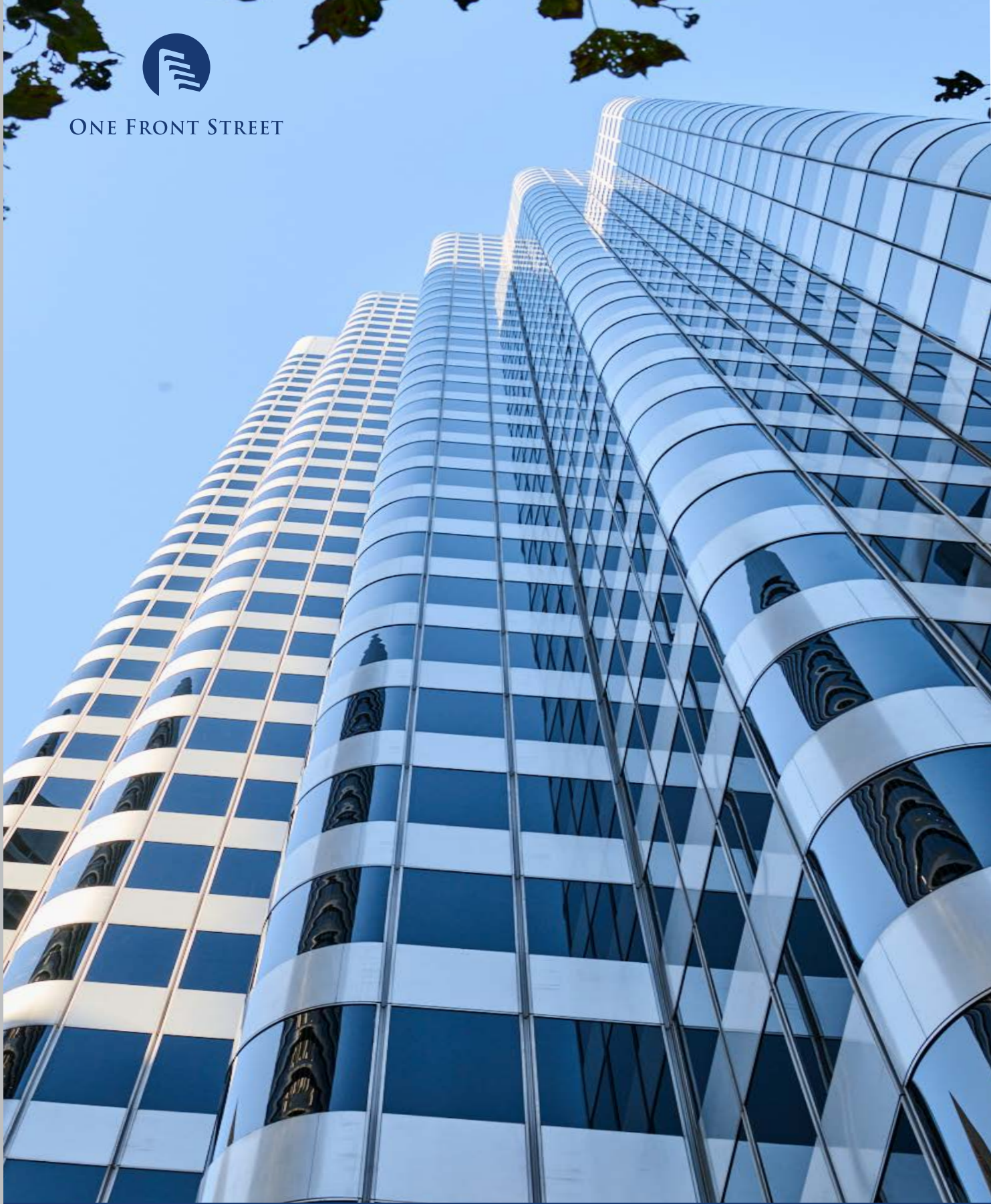




ONE FRONT STREET



A NEW PERSPECTIVE

# FRONT AND CENTER



# Overview



667,138 Sf Building;  
36 Floors of  
Class A Space



Iconic Skidmore  
Owings & Merrill Design



Recessed Terraces on  
Top 4 Floors



Efficient Side  
Core Design



In Building Valet Parking  
1:3,000 SF



Close Proximity to  
Public Transportation



Private Roof Deck on 33rd - 36th Floors

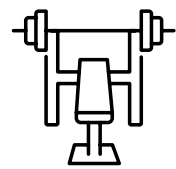
## 2027 Planned Amenities



Ground Floor  
Restaurant And Bar



Tenant-Only  
Speakeasy



State-Of-The-Art  
Fitness Center



Conferencing  
Facilities

## Awards & Distinctions



Energy Star  
Rating Of 94



Leed  
Platinum Certified



Recipient of SF's  
Earth Award



Sweeping views of Golden Gate Bridge and Bay Bridge



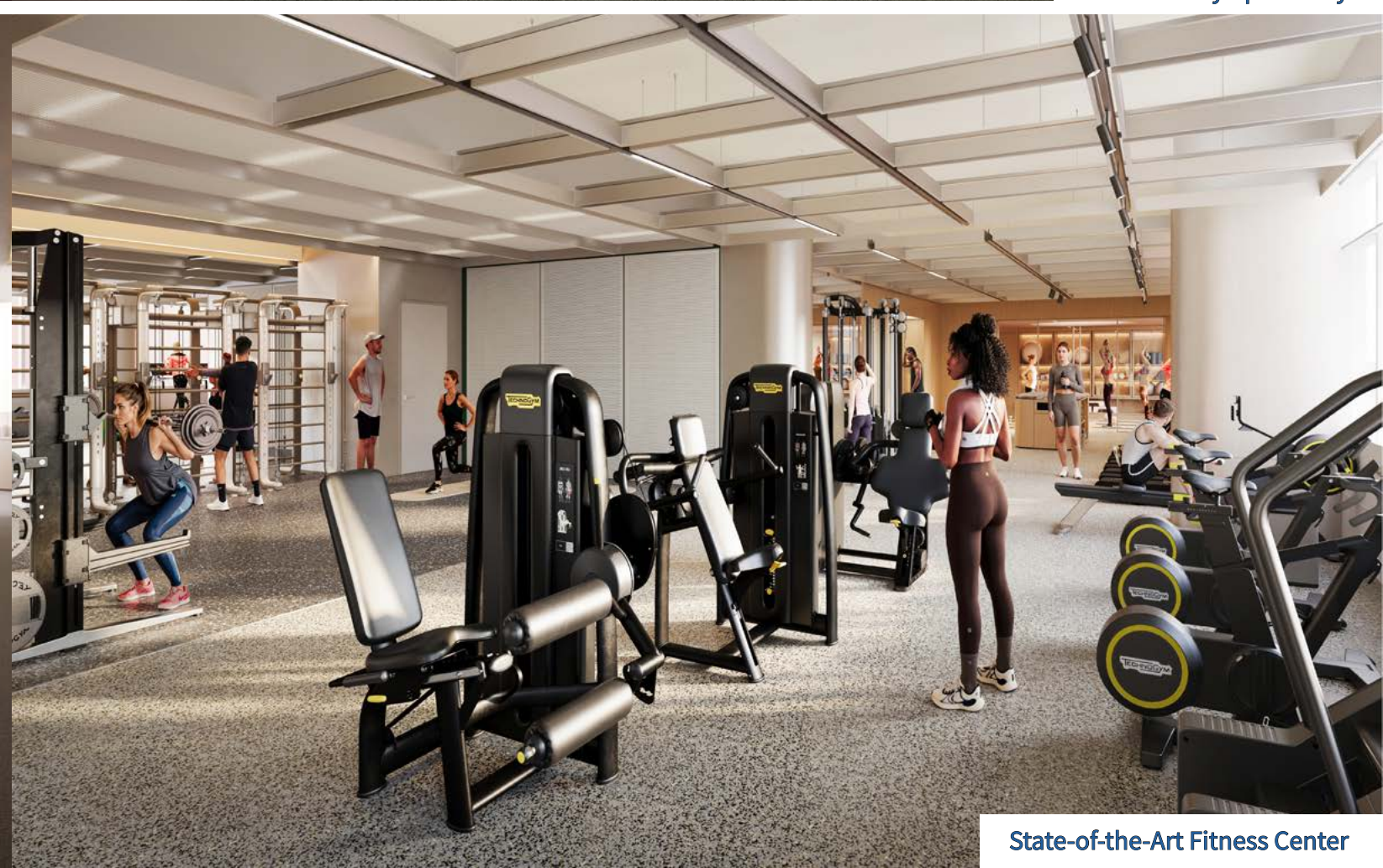
Ground Floor Restaurant and Bar



Tenant Only Speakeasy



Conferencing Facilities



State-of-the-Art Fitness Center

# Location & Amenities



Abundant valet parking on-site



24-hour manned security



Excellent access to Bay Bridge, highways, and ferries



Philz coffee



Various fiber providers including AT&T & Verizon



Located on market bordering North & South Financial Districts



**UNBEATABLE ACCESS**  
to transit and amenities



Philz coffee on-site



Immediate access to BART, Muni, & trolleys

## Restaurants

- 1 Tlloc
- 2 Wayfare Tavern
- 3 Homegrown
- 4 Michael Mina
- 5 Tadich Grill
- 6 Perbacco
- 7 One Market Restaurant
- 8 Credo
- 9 Plant Organic Cafe
- 10 Sam's Grill
- 11 Barcha Restaurant
- 12 Boulevard Restaurant
- 13 Ozuma
- 14 The Cosmo Bar and Lounge
- 15 International Smoke
- 16 Yank Sing
- 17 Pied Piper
- 18 Town Hall Restaurant
- 19 Prospect

## Hospitality

- 20 Le Meridien Hotel
- 21 Omni Hotel
- 22 Mandarin Oriental Hotel
- 23 Hyatt Regency Hotel
- 24 Hotel Griffon
- 25 Harbor Court Hotel
- 26 The Palace Hotel

## Fitness

- 27 Golden Gateway Tennis & Swim Club
- 28 Club One
- 29 The Bar Method
- 30 24-Hour Fitness
- 31 Equinox
- 32 Crunch Fitness

# Availabilities



PRIVATE TERRACE

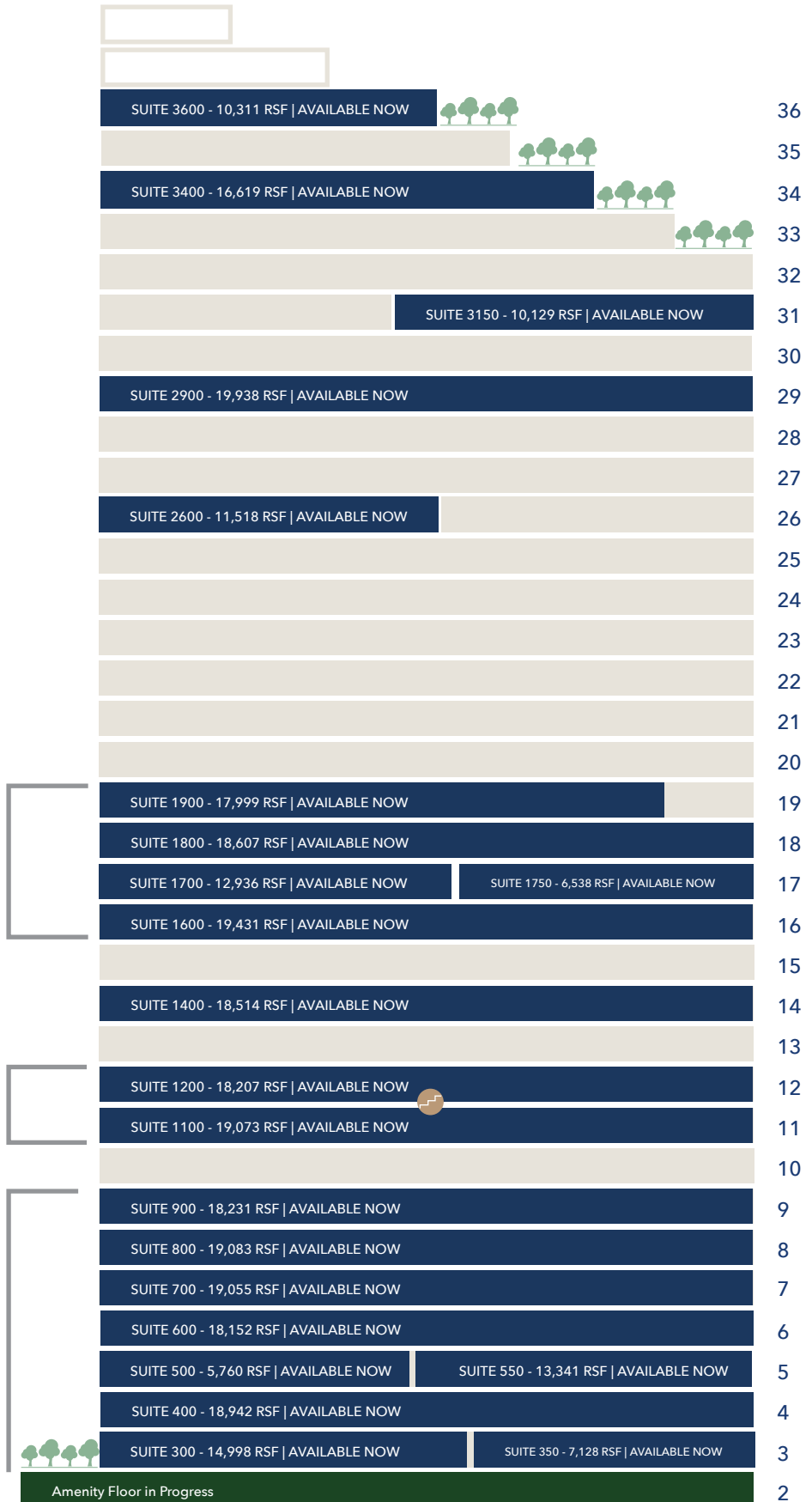


INTERCONNECTING STAIR

56,904 RSF BLOCK

37,280 RSF BLOCK

115,757 RSF BLOCK



# SUITE 300 & 350



## SUITE 300

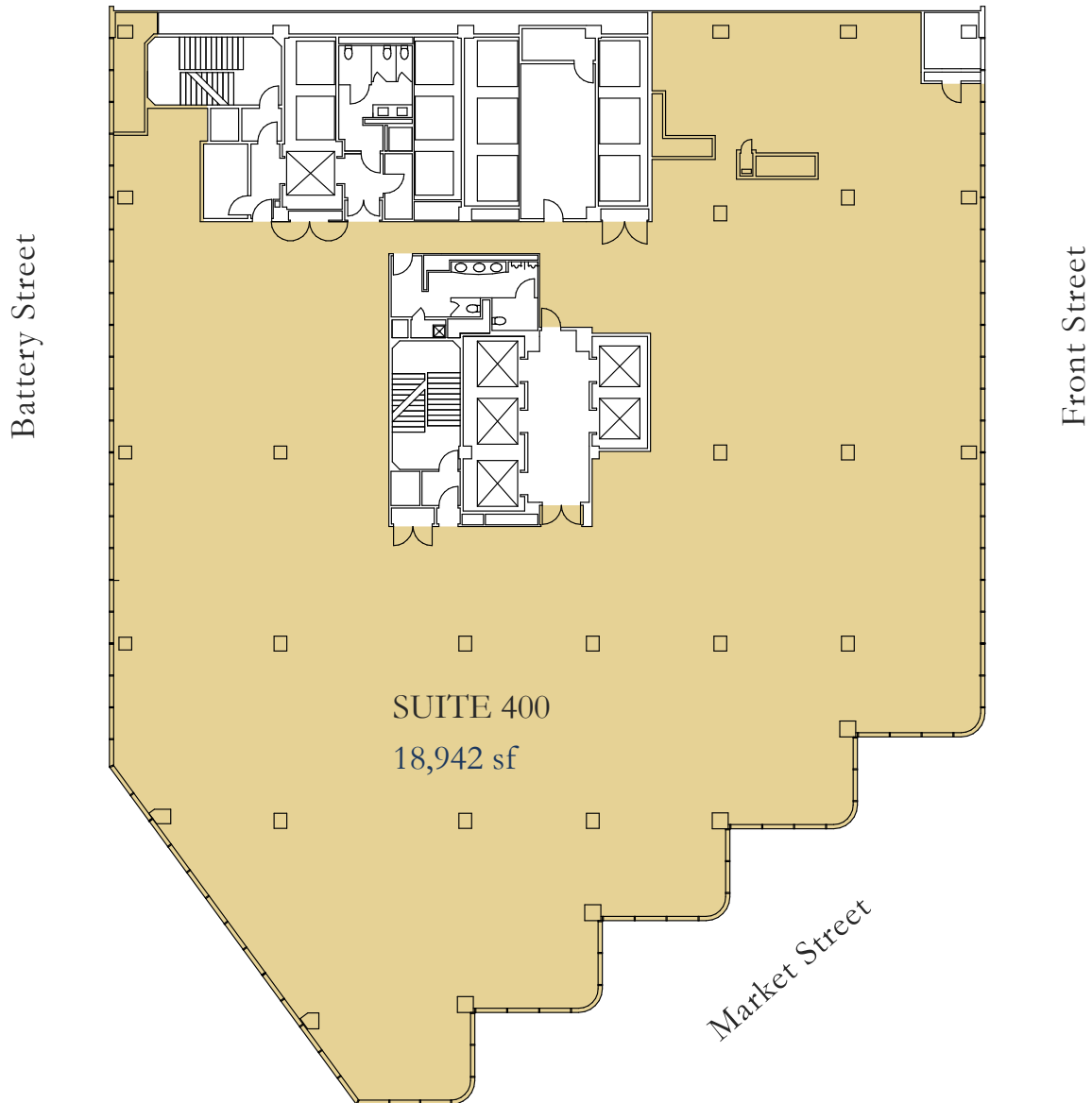
- Available now
- 11 private offices
- 3 conference rooms
- Kitchen/break room
- Private outdoor terrace

## SUITE 350

- Available now
- Can be delivered in shell condition
- Can be combined with Suite 300 for a total of 22,126 RSF

# SUITE 400

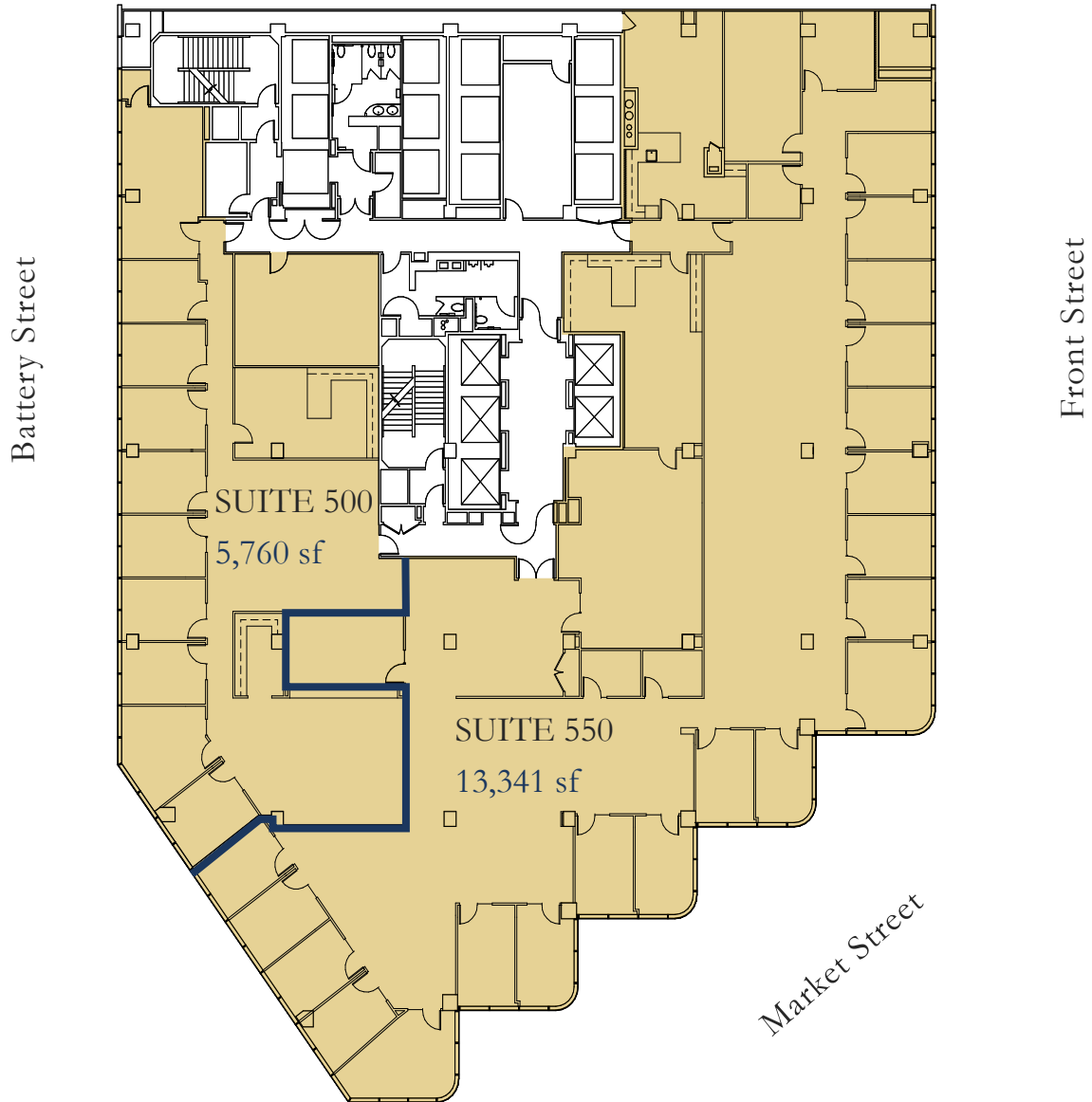
18,942 sf



## SUITE 400

- Available now
- To be delivered in clean, “white-box” condition and ready for tenant improvements.

# SUITE 500 & 550



## SUITE 500

- Available now
- 1 large conference room
- 9 perimeter offices
- Kitchen

- Can be combined with Suite 550 for a total of 19,101 RSF

## SUITE 550

- Available now
- 18 perimeter offices
- 2 large conference rooms
- 2 phone rooms

- 3 medium conference rooms
- Kitchen
- Can be combined with Suite 500 for a total of 19,101 RSF

# SUITE 600

18,152 sf



## SUITE 600

- Available now
- 4 conference rooms
- 19 private offices
- Kitchen/break area
- Production/storage area

# SUITE 700

19,055 sf

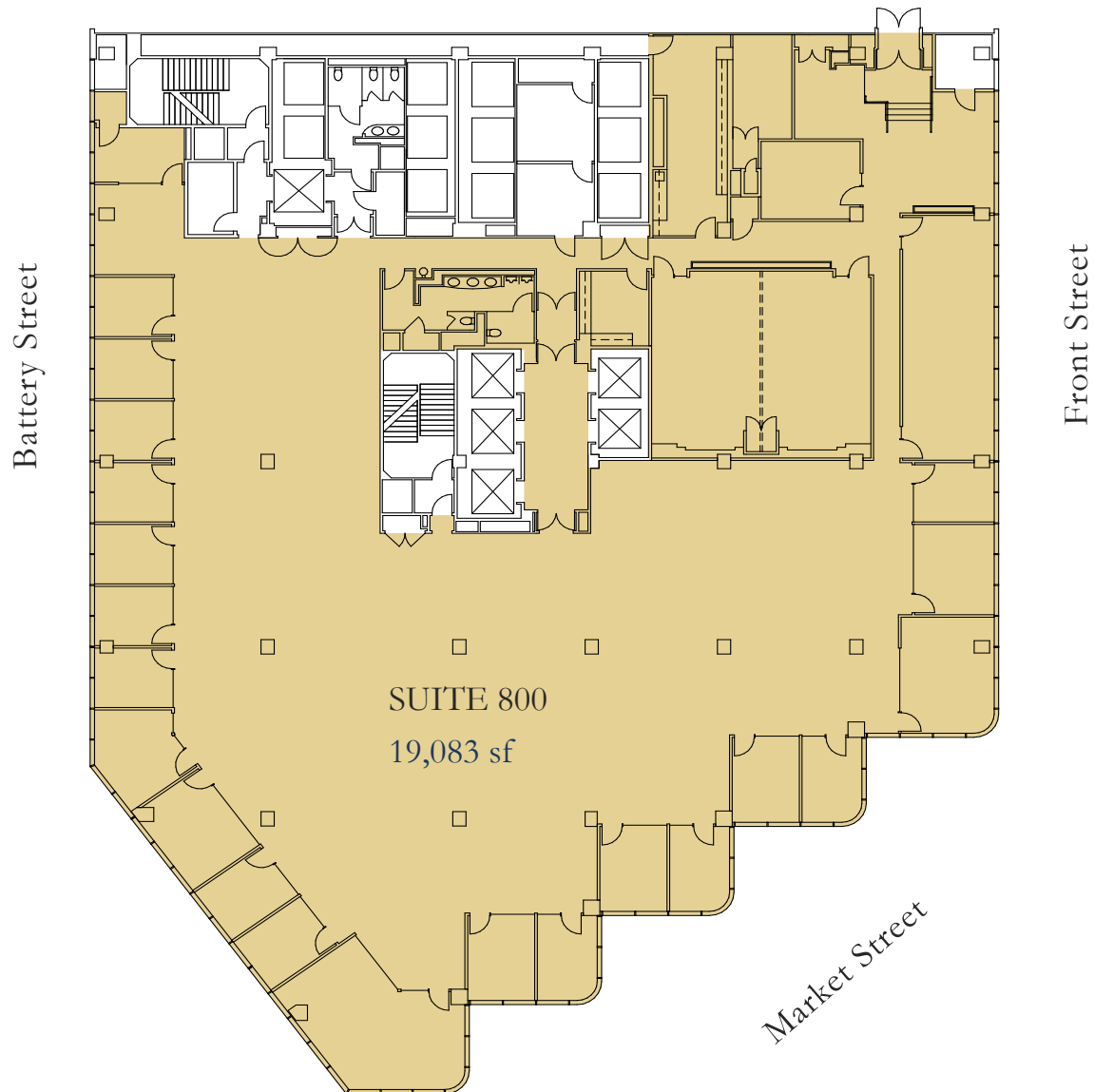


## SUITE 700

- Available now
- 4 conference rooms
- 24 private offices
- 6 phone rooms
- Single stall gender-neutral restroom
- Production/storage area
- Kitchen
- Mother's room

# SUITE 800

19,083 sf



## SUITE 800

- Available now
- 8 conference rooms
- 18 private offices
- 1 large boardroom
- Kitchen
- Storage/production room

# SUITE 900

18,231 sf



## SUITE 900

- Available now
- 7 conference rooms
- 21 private offices
- 1 large boardroom
- 2 phone rooms
- Server room
- Kitchen
- Storage/production room

# SUITE 1100

19,073 sf



## SUITE 1100

- Available now
- 6 conference rooms
- 23 private offices
- 1 large boardroom
- 5 phone rooms
- Interconnecting stairwell
- Additional single-stall gender-neutral restroom
- Reception
- Kitchen
- Storage/production area

# SUITE 1200

18,207 sf



## SUITE 1200

- Available now
- 2 conference rooms
- 32 private offices
- 5 phone rooms
- Interconnecting stairwell down to suite 1100
- Additional single-stall gender-neutral restroom
- Kitchen
- Storage/production area

# SUITE 1400

18,514 sf



## SUITE 1400

- Available now
- 26 window-lined private offices
- 12 internal private offices
- 2 phone rooms
- 2 small meeting rooms
- 4 conference rooms
- Additional single-stall gender-neutral restroom
- Kitchen
- Storage/production area

# SUITE 1600

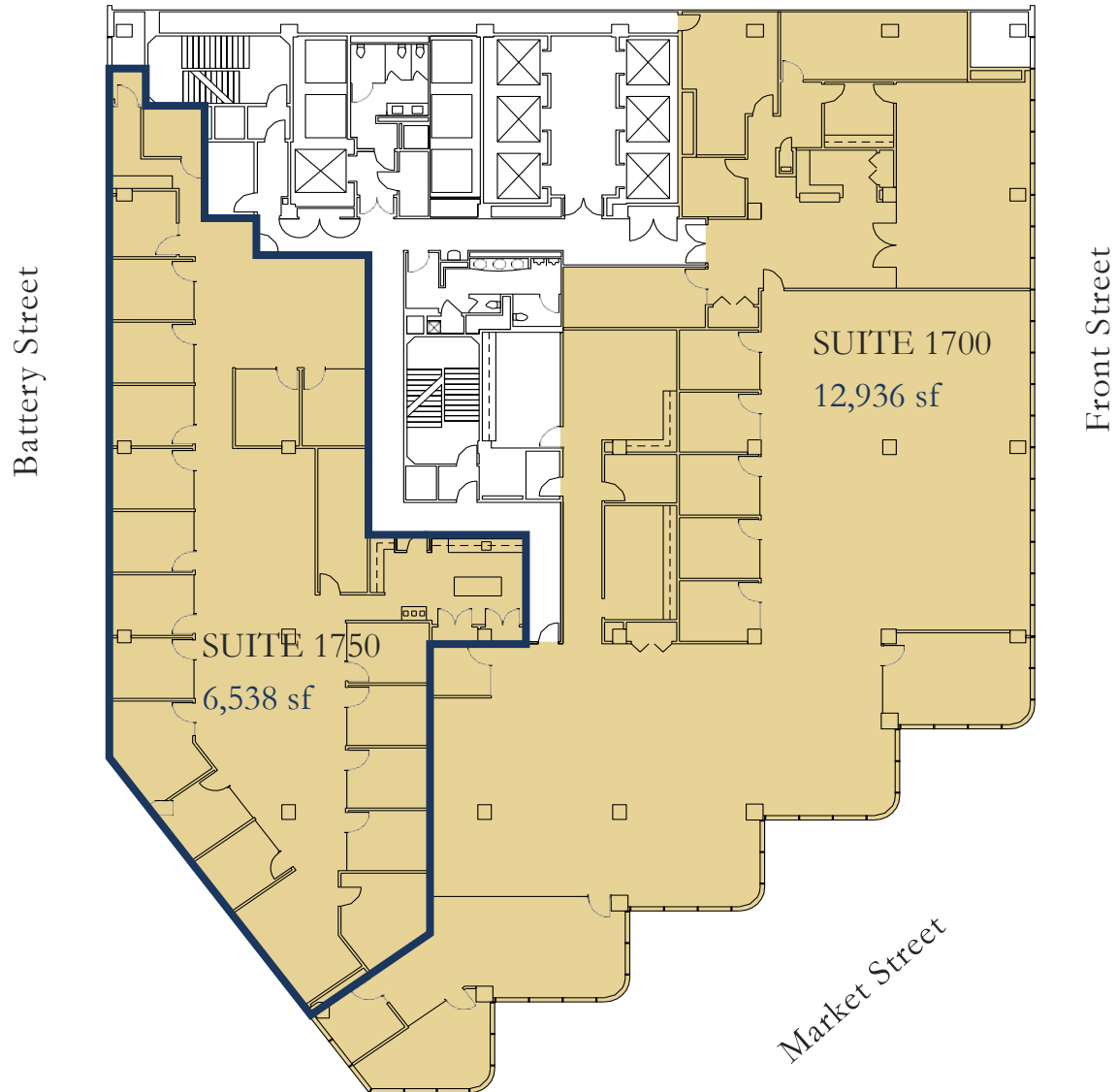
19,431 sf



## SUITE 1600

- Available now
- 14 private offices
- 6 conference rooms
- 6 phone rooms
- Additional single-stall gender-neutral restroom
- Kitchenette
- Server room
- Storage/production room

# SUITE 1700 & 1750



## SUITE 1700

- Available now
- 3 conference rooms
- 5 private offices
- Kitchen
- Production / storage area
- Open space

## SUITE 1750

- Available now
- 11 window-lined private offices
- 7 interior private offices
- 2 server rooms
- Kitchen
- 1 phone room

# SUITE 1800

18,607 sf



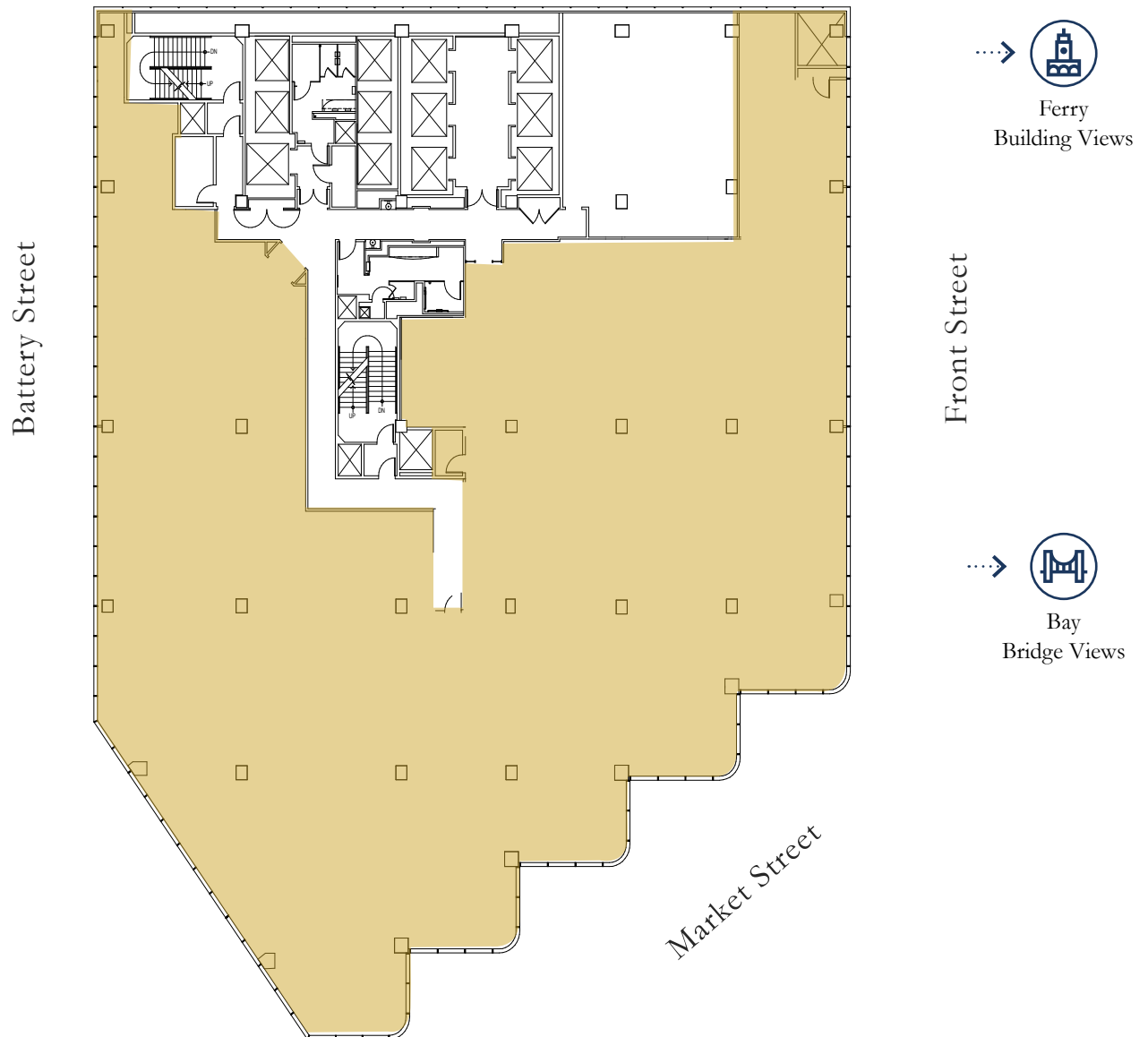
## SUITE 1800

- Available now
- Pre-built traditional office
- 29 window-line offices
- 3 interior offices
- 2 meeting rooms
- Kitchen
- Production room
- Storage
- Ample open area for workstations

# SUITE 1900

17,999 sf

[Click Here for Virtual Tour](#)

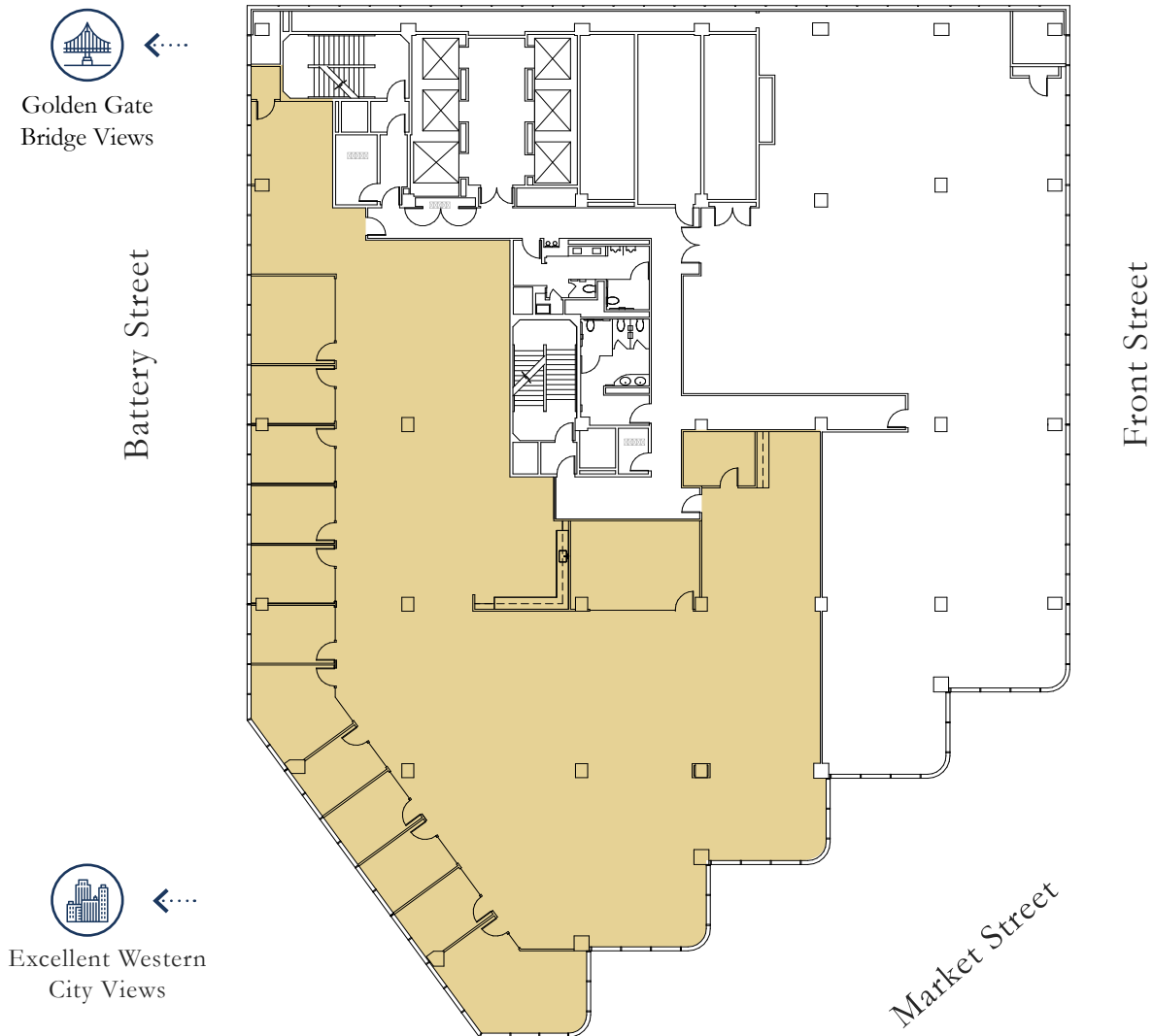


## SUITE 1900

- Available now
- Full floor in “clean white-box” condition
- Outstanding views of the Ferry Building, Bay Bridge, and down Market Street
- Suite can be demised from 8,000 to 10,000 RSF
- Brand new upgrades to the common areas and restrooms

# SUITE 2600

11,518 sf



## SUITE 2600

- Available now
- 10 perimeter offices
- 2 large conference rooms
- 2 medium conference rooms
- Open kitchen
- Can be combined with 27th – 36th floors for a total of 195,222 RSF

# SUITE 2900

19,938 sf



## SUITE 2900

- Available now
- 1 large boardroom
- 10 medium conference rooms
- Open ceiling creative space
- 5 phone rooms
- Kitchen
- Can be combined with 26th –36th floors for a total of 195,222 RSF

# SUITE 3150

10,129 sf

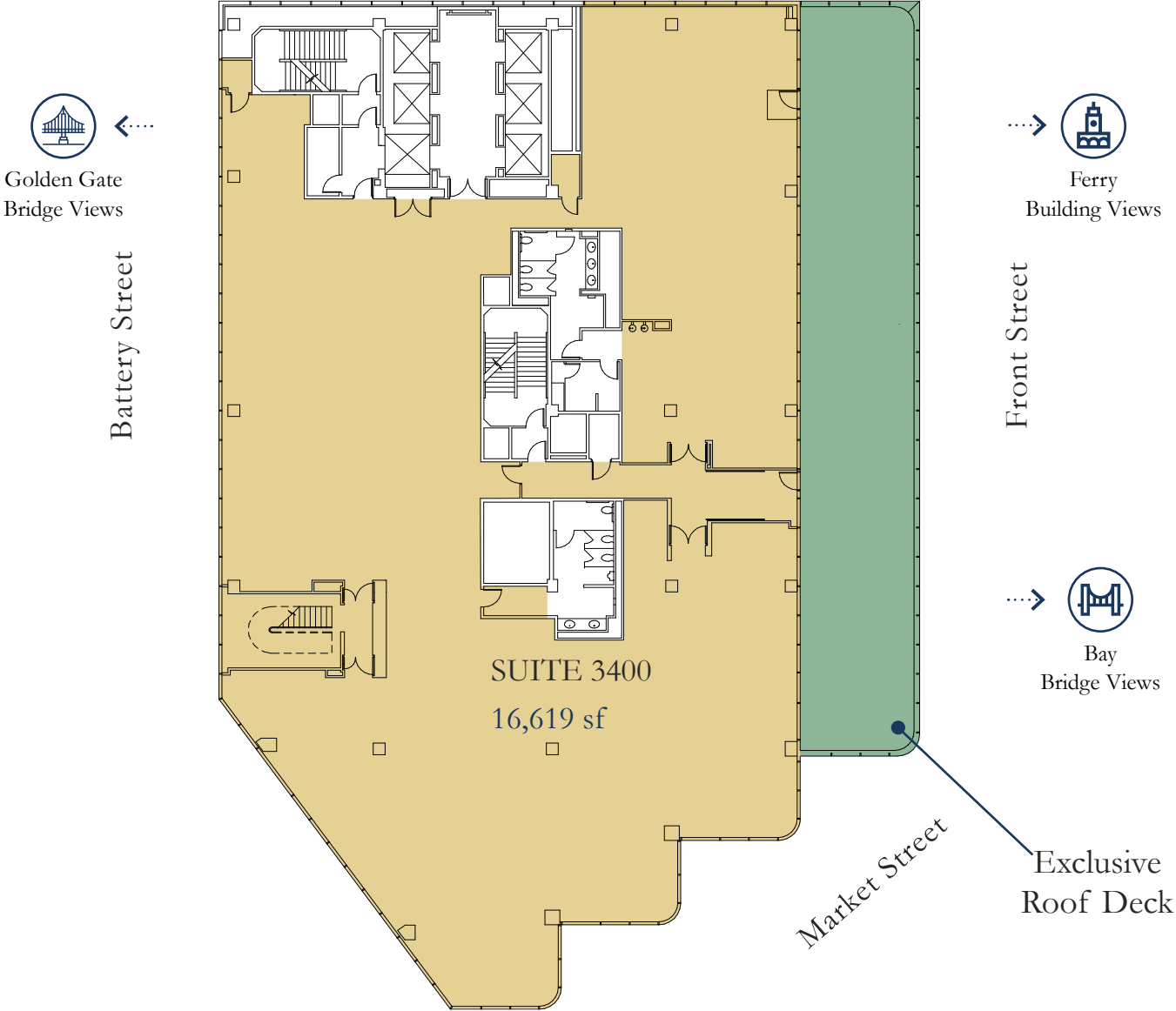


## SUITE 3150

- Brand new spec suite available now
- 10 private offices
- 1 boardroom
- 3 medium conference room
- 1 phone booth
- 2 collaboration rooms
- Coat room
- Kitchen and break room
- Copy room
- IT and storage rooms

# SUITE 3400

16,619 sf

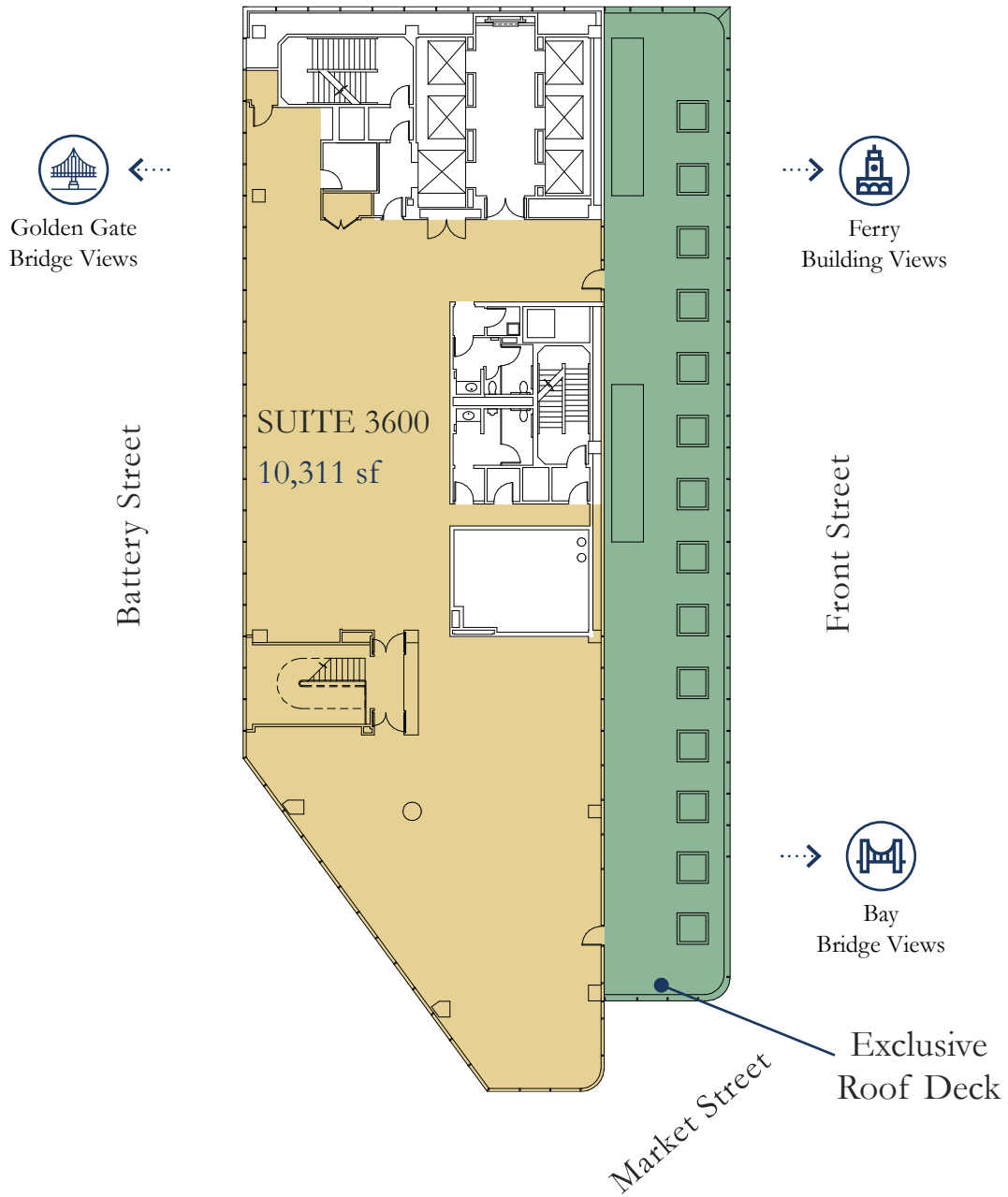


## SUITE 3400

- Available now
- To be delivered in warm shell condition, ready for TIs

# SUITE 3600

10,311 sf



## SUITE 3600

- Available now
- To be delivered in warm shell condition, ready for TIs

# A NEW PERSPECTIVE FRONT AND CENTER



ONE FRONT STREET

Christopher T. Roeder

(415) 395 4971  
chris.roeder@jll.com  
RE License # 01190523

Wes Powell

(415) 395 4901  
wesley.powell@jll.com  
RE License # 01702003

Ted Davies

(415) 395 4972  
ted.davies@jll.com  
RE License # 01460185

Tom Doupe

(415) 395 4933  
tom.doupe@jll.com  
RE License # 01921218

Teva Myatt

(415) 395 7290  
teva.myatt@jll.com  
RE License # 0 02198058

Although information has been obtained from sources deemed reliable, JLL does not make any guarantees, warranties or representations, express or implied, as to the completeness or accuracy as to the information contained herein. Any projections, opinions, assumptions or estimates used are for example only. There may be differences between projected and actual results, and those differences may be material. JLL does not accept any liability for any loss or damage suffered by any party resulting from reliance on this information. If the recipient of this information has signed a confidentiality agreement with JLL regarding this matter, this information is subject to the terms of that agreement. ©2026 Jones Lang LaSalle Brokerage, Inc. All rights reserved.

\*\*The outbreak of the COVID-19 virus (novel coronavirus) since the end of January 2025 has resulted in market uncertainty and volatility. While the economic impact of a contagion disease generally arises from the uncertainty and loss of consumer confidence, its impact on real estate values is unknown at this stage.



PARAMOUNT  
GROUP

[www.pgre.com](http://www.pgre.com)