

INDUSTRIAL PROPERTY // FOR SALE / LEASE

14,400 SF INDUSTRIAL BUILDING WITH 100% A/C - IMMEDIATE OCCUPANCY!

33891 DOREKA DR
FRASER, MI 48026

MOTIVATED LANDLORD/SELLER!



- 14,400 SF Manufacturing Building for Sale/Lease
- 11,440 SF Shop and 2,925 SF Office
- 18' Clear Height and One (1) 12' x 14' Overhead Door
- 140' of Buss Duct, 220 Volt/400 Amp Power
- 100% AC throughout
- 1.12-Acre Site can Accommodate Expansion
- Motivated Landlord/Seller!



P.A. COMMERCIAL
Corporate & Investment Real Estate

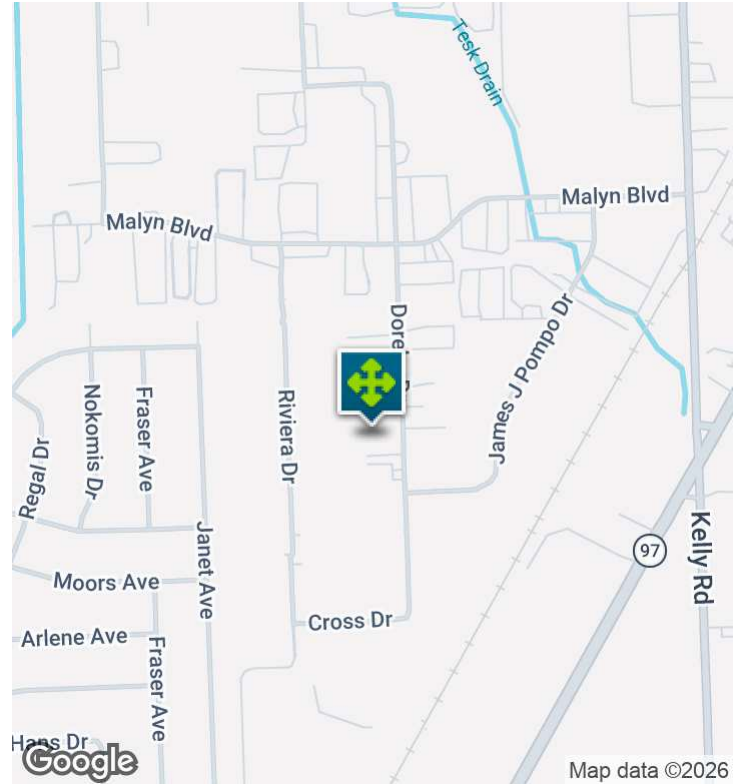
26555 Evergreen Road, Suite 1500
Southfield, MI 48076

248.358.0100

pacommercial.com

We obtained the information above from sources we believe to be reliable. However, we have not verified its accuracy and make no guarantee, warranty or representation about it. It is submitted subject to the possibility of errors, omissions, change of price, rental or other conditions, prior sale, lease or financing, or withdrawal without notice. We include projections, opinions, assumptions or estimates for example only, and they may not represent current, past or future performance of the property. You and your tax and legal advisors should conduct your own investigation of the property and transaction.

EXECUTIVE SUMMARY



Sale Price	\$1,500,000
Lease Rate	\$5.95 SF/YR (NNN)

OFFERING SUMMARY

Building Size:	14,400 SF
Available SF:	14,400 SF
Lot Size:	1.12 Acres
Price / SF:	\$104.17
Year Built:	1985
Renovated:	2021
Zoning:	M-2
Market:	Detroit
Submarket:	Groesbeck Central
Traffic Count:	31,100

PROPERTY OVERVIEW

This 14,400 SF manufacturing building is a former machine shop and features one (1) 12 x 14' door, 100% A/C, 18' clear, 400 amp / 220-volt power with 140' of buss duct and airlines. There is a 2,925 SF office with three private offices, and three bathrooms. There is also a separate 2,400 SF interior shop room which is accessible with a 10 x 10' door with mezzanine space above. Great location on a 1.12-acre lot that can accommodate a building expansion or additional parking.

LOCATION OVERVIEW

Fantastic location in Fraser Industrial Park the heart of the Groesbeck Industrial Corridor, this industrial building is located off of the south side of 15 Mile Rd, just west of Kelly Road. Close proximity to GM Tech Center, Chrysler Assembly, Ford Transmission, and many well-known Auto Suppliers.

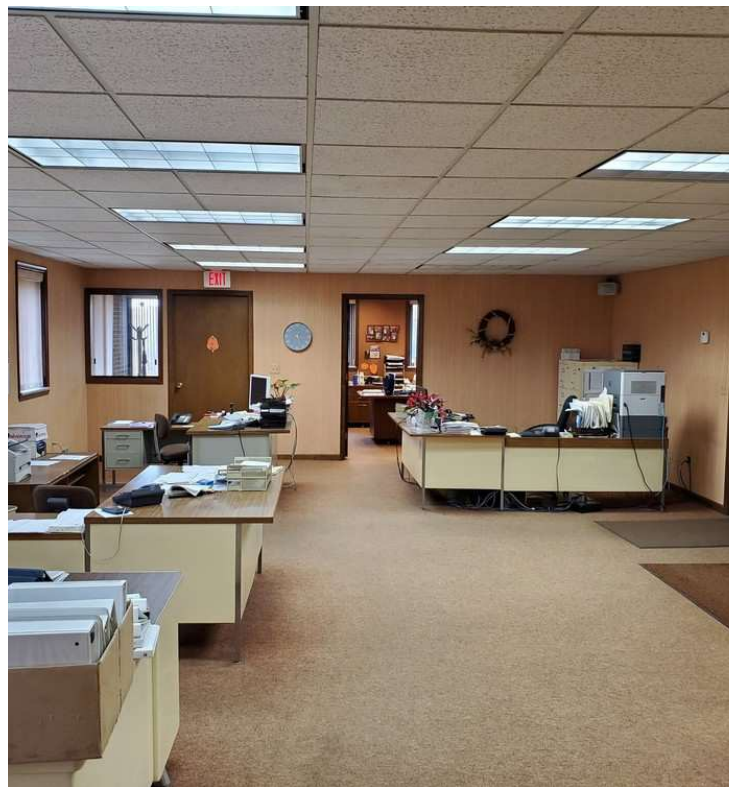
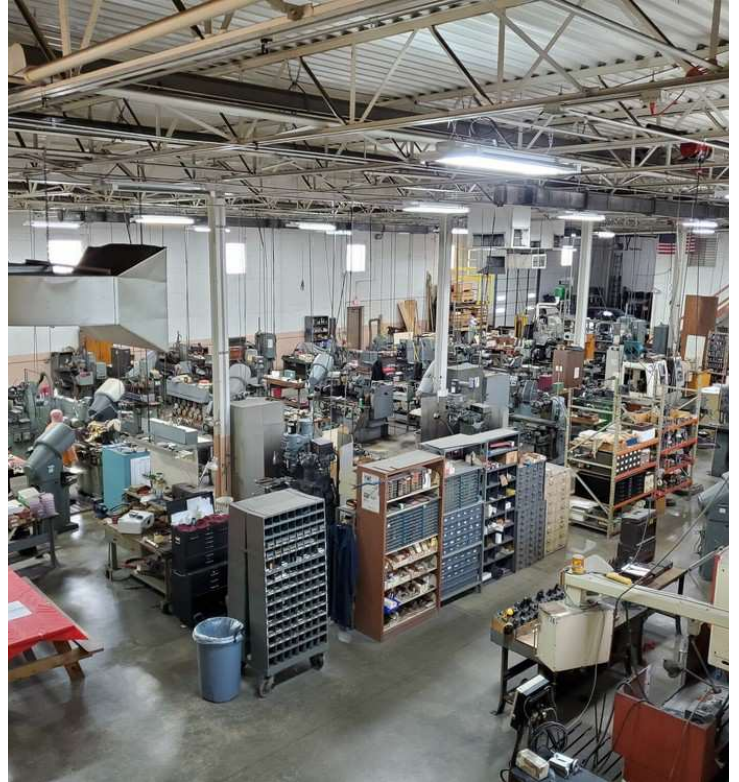
PROPERTY HIGHLIGHTS

- 14,400 SF Manufacturing Building for Sale/Lease
- 11,440 SF Shop and 2,925 SF Office
- 18' Clear Height and One (1) 12' x 14' Overhead Door
- 140' of Buss Duct, 220 Volt/400 Amp Power

33891 DOREKA DR, FRASER, MI 48026 // FOR SALE / LEASE

INDUSTRIAL DETAILS

Available Space:	14,400 SF
Shop SF:	11,440 SF
Office SF:	2,925 SF
Occupancy:	Immediate Occupancy
Zoning:	M-2
Lot Size:	1.12 Acres
Parking Spaces:	30
Fenced Yard:	No
Trailer Parking:	No
Year Built / Renovated:	1985
Construction Type:	Brick/Block
Clear Height:	18'
Grade Level Doors:	One (1) 12' x 14'
Truckwells/Docks:	No
Column Spacing:	40'
Power:	400 amp / 220 volt
Buss Duct:	140' of 200 amp / 220 volt
Air Conditioning:	Yes; 100% A/C
Heat Type:	Tube Radiant
Airlines:	Yes
Taxes:	\$29,326.33



P.A. COMMERCIAL
Corporate & Investment Real Estate

John T. Arthurs PARTNER

D: 248.663.0506 | **C:** 248.563.3225

johna@pacommercial.com

We obtained the information above from sources we believe to be reliable. However, we have not verified its accuracy and make no guarantee, warranty or representation about it. It is submitted subject to the possibility of errors, omissions, change of price, rental or other conditions, prior sale, lease or financing, or withdrawal without notice. We include projections, opinions, assumptions or estimates for example only, and they may not represent current, past or future performance of the property. You and your tax and legal advisors should conduct your own investigation of the property and transaction.

33891 DOREKA DR, FRASER, MI 48026 // FOR SALE / LEASE

ADDITIONAL PHOTOS



P.A. COMMERCIAL
Corporate & Investment Real Estate

John T. Arthurs PARTNER

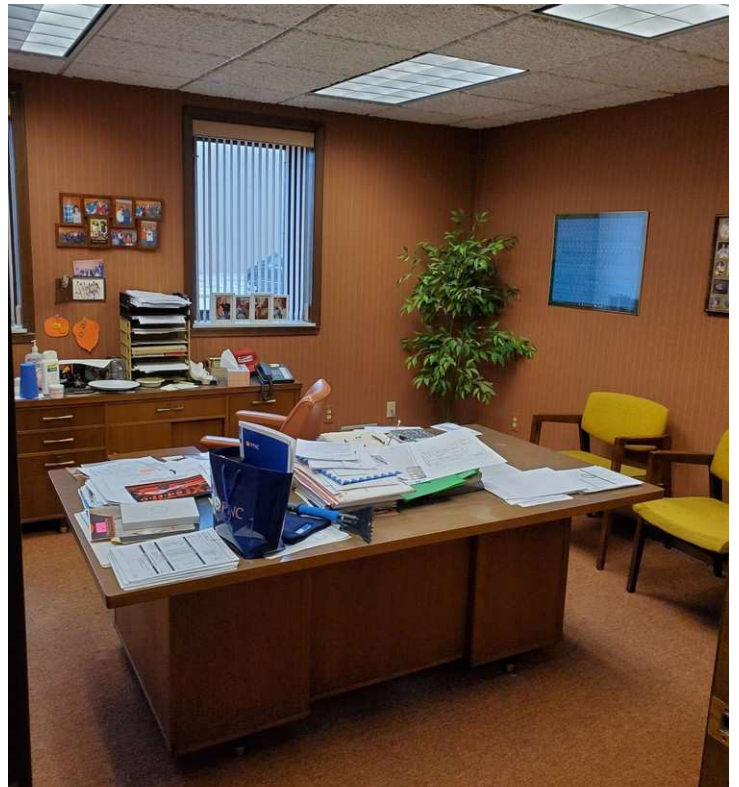
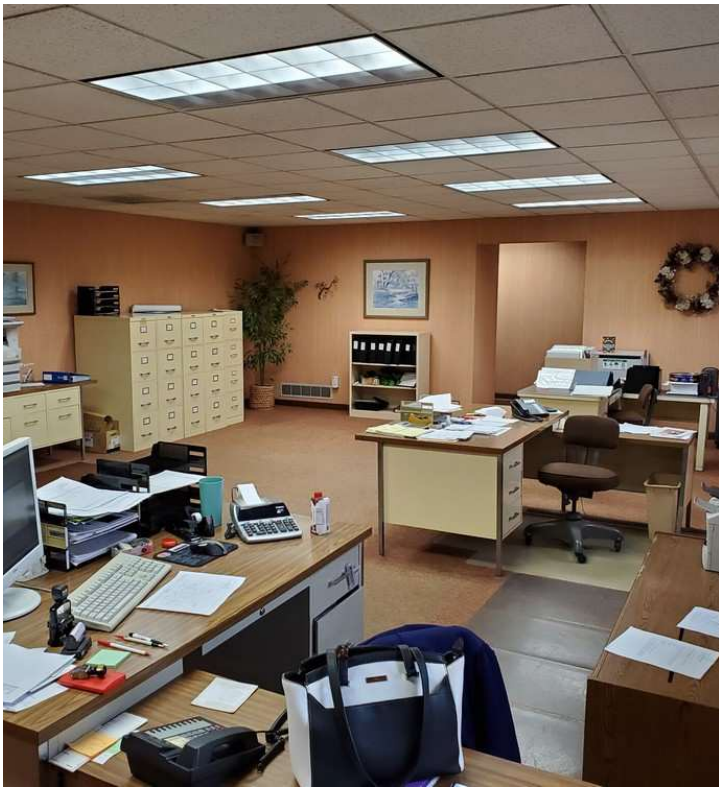
D: 248.663.0506 | C: 248.563.3225

johna@pacommercial.com

We obtained the information above from sources we believe to be reliable. However, we have not verified its accuracy and make no guarantee, warranty or representation about it. It is submitted subject to the possibility of errors, omissions, change of price, rental or other conditions, prior sale, lease or financing, or withdrawal without notice. We include projections, opinions, assumptions or estimates for example only, and they may not represent current, past or future performance of the property. You and your tax and legal advisors should conduct your own investigation of the property and transaction.

33891 DOREKA DR, FRASER, MI 48026 // FOR SALE / LEASE

ADDITIONAL PHOTOS



33891 DOREKA DR, FRASER, MI 48026 // FOR SALE / LEASE

ADDITIONAL PHOTOS



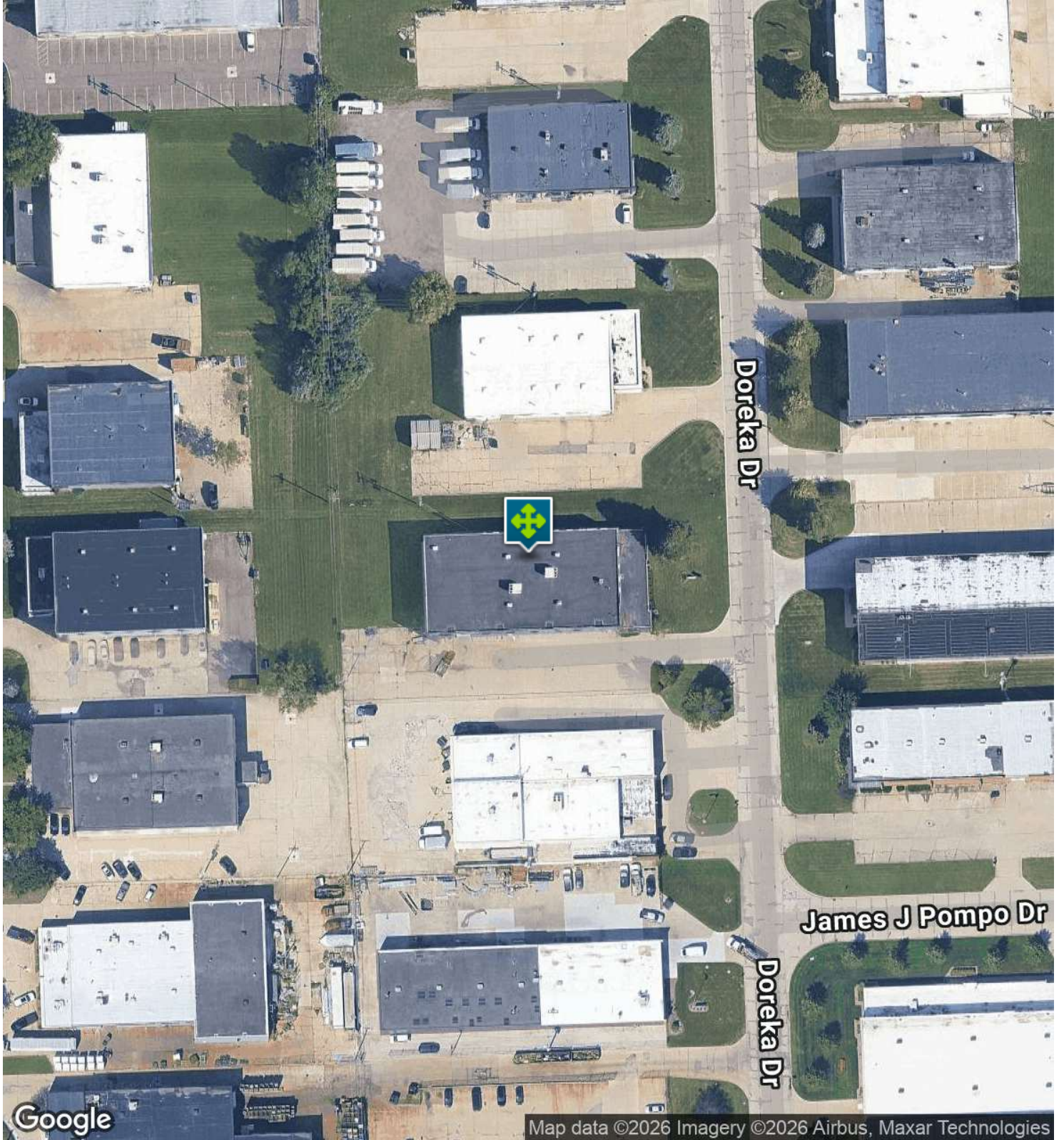
33891 DOREKA DR, FRASER, MI 48026 // FOR SALE / LEASE

FLOOR PLANS



33891 DOREKA DR, FRASER, MI 48026 // FOR SALE / LEASE

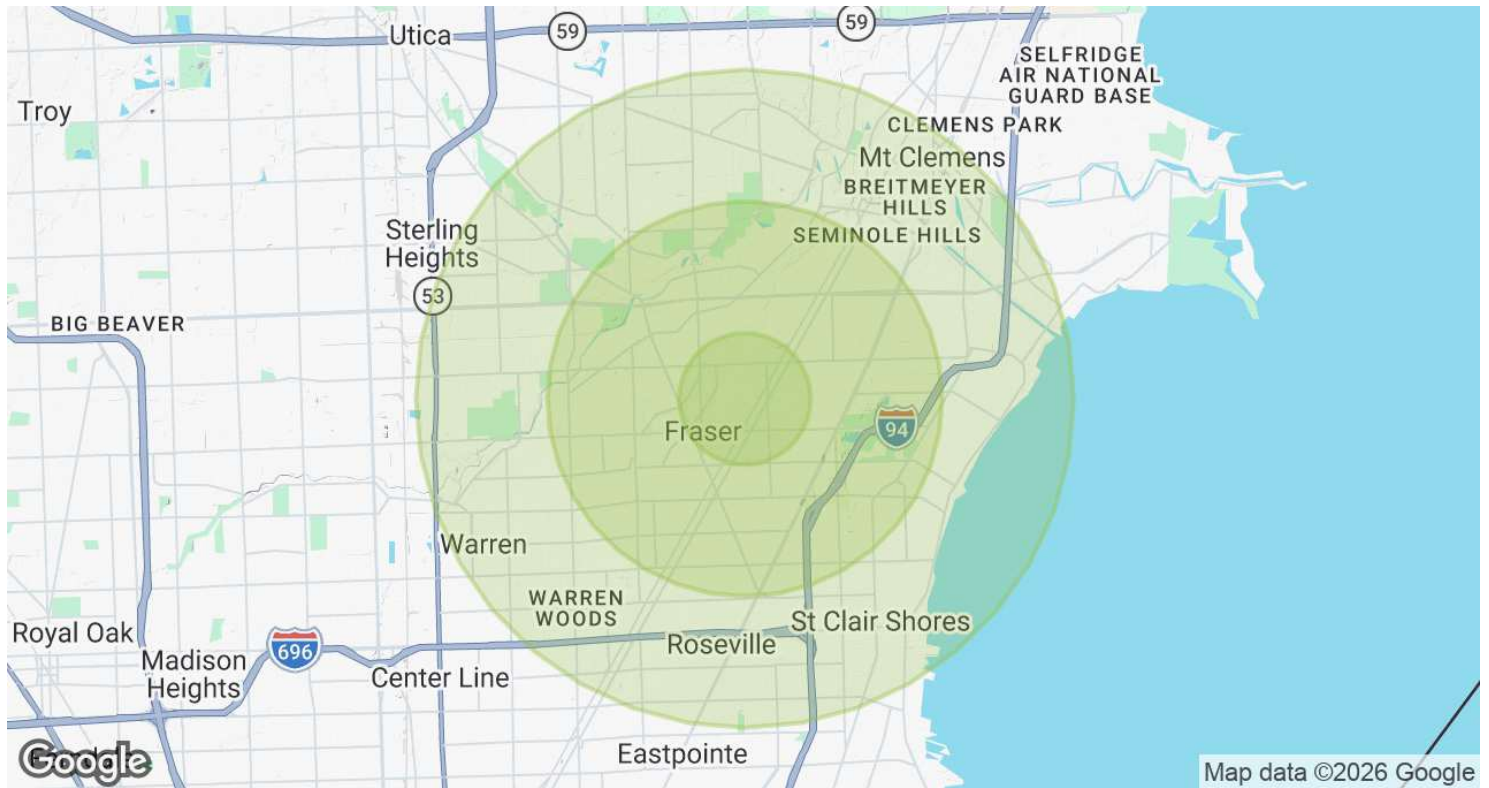
AERIAL MAP



John T. Arthurs PARTNER
D: 248.663.0506 | C: 248.563.3225
johna@pacommercial.com

We obtained the information above from sources we believe to be reliable. However, we have not verified its accuracy and make no guarantee, warranty or representation about it. It is submitted subject to the possibility of errors, omissions, change of price, rental or other conditions, prior sale, lease or financing, or withdrawal without notice. We include projections, opinions, assumptions or estimates for example only, and they may not represent current, past or future performance of the property. You and your tax and legal advisors should conduct your own investigation of the property and transaction.

DEMOGRAPHICS MAP & REPORT



POPULATION	1 MILE	3 MILES	5 MILES
Total Population	9,461	107,550	317,372
Average Age	39.0	40.6	41.0
Average Age (Male)	38.1	38.2	39.2
Average Age (Female)	40.4	42.6	42.4

HOUSEHOLDS & INCOME	1 MILE	3 MILES	5 MILES
Total Households	3,806	45,368	132,640
# of Persons per HH	2.5	2.4	2.4
Average HH Income	\$59,031	\$58,657	\$61,069
Average House Value	\$143,833	\$148,142	\$151,472

2020 American Community Survey (ACS)

33891 DOREKA DR, FRASER, MI 48026 // FOR SALE / LEASE

CONTACT US

MOTIVATED LANDLORD/SELLER!



FOR MORE INFORMATION, PLEASE CONTACT:



John T. Arthurs
PARTNER

D: 248.663.0506

C: 248.563.3225

johna@pacommercial.com

P.A. Commercial

26555 Evergreen Road, Suite 1500
Southfield, MI 48076

P: 248.358.0100

F: 248.358.5300

pacommercial.com

Follow Us!



We obtained the information above from sources we believe to be reliable. However, we have not verified its accuracy and make no guarantee, warranty or representation about it. It is submitted subject to the possibility of errors, omissions, change of price, rental or other conditions, prior sale, lease or financing, or withdrawal without notice. We include projections, opinions, assumptions or estimates for example only, and they may not represent current, past or future performance of the property. You and your tax and legal advisors should conduct your own investigation of the property and transaction.