

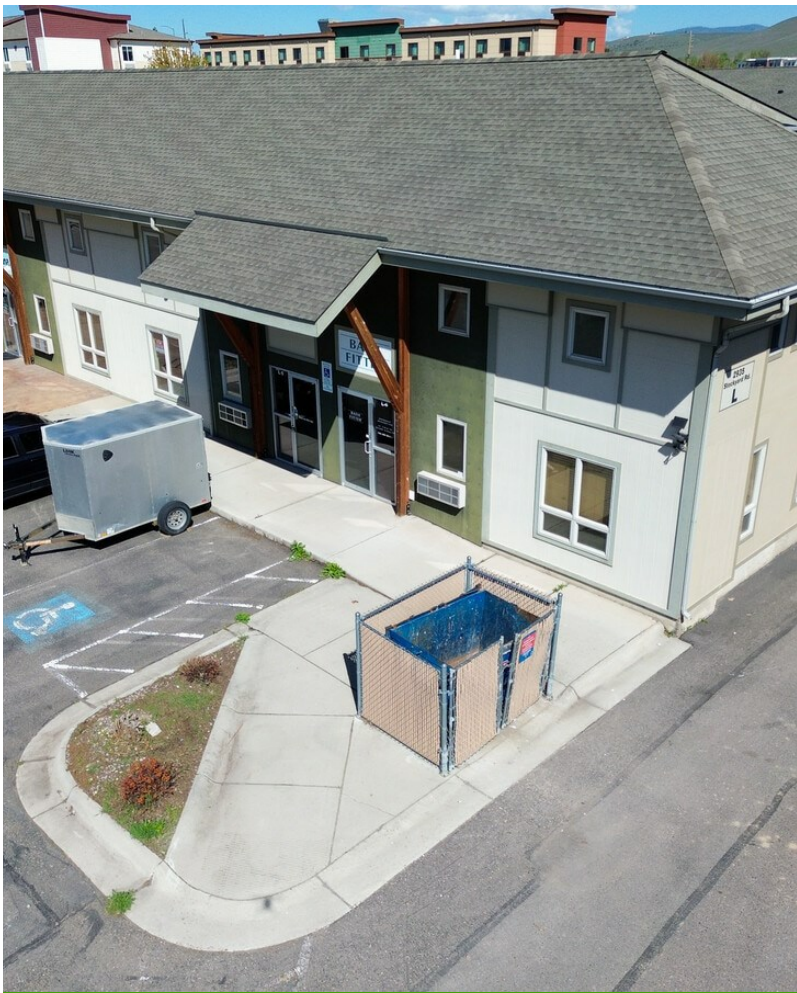


2935 Stockyard Rd

2935 Stockyard Rd, Missoula, MT 59808



Jeff Valiquett
BRIVAN, LLC
9074 S 300 W, Sandy, UT 84070
jeff@brivanre.com
(801) 664-3082



2935 Stockyard Rd

\$13.00 /SF/YR

Office reception area, bathroom, kitchenette, and a partially finished mezzanine space that can be used for additional office, meeting, or storage space, including a garage door at the rear of the space....

- The airport is three miles away via I-90, making it convenient for travelers and businesses.
- Roll up door and Garage.
- Office, reception area, bathroom, kitchenette, and garage with high ceilings.
- Mezzanine space suitable for additional office or storage use.

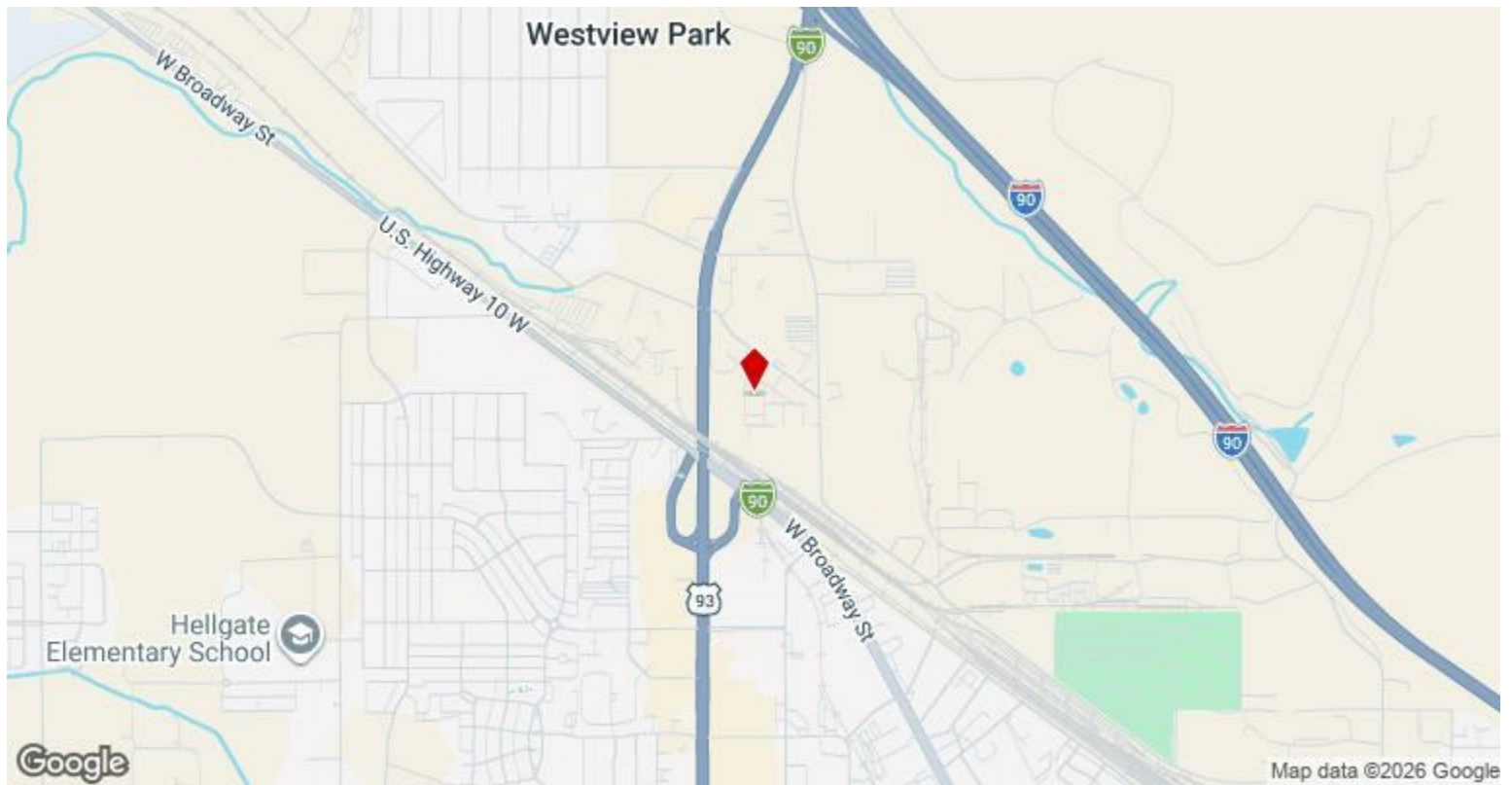


Rental Rate:	\$13.00 /SF/YR
Property Type:	Flex
Property Subtype:	Flex Research & Development
Building Class:	B
Rentable Building Area:	8,112 SF
Year Built:	2009
Taxes:	\$0.14 USD/SF/MO
Operating Expenses:	\$0.21 USD/SF/MO
Rental Rate Mo:	\$1.08 /SF/MO

1st Floor

Space Available	1,500 SF
Rental Rate	\$13.00 /SF/YR
Date Available	Now
Service Type	Triple Net (NNN)
Space Type	Relet
Space Use	Flex
Lease Term	3 - 5 Years

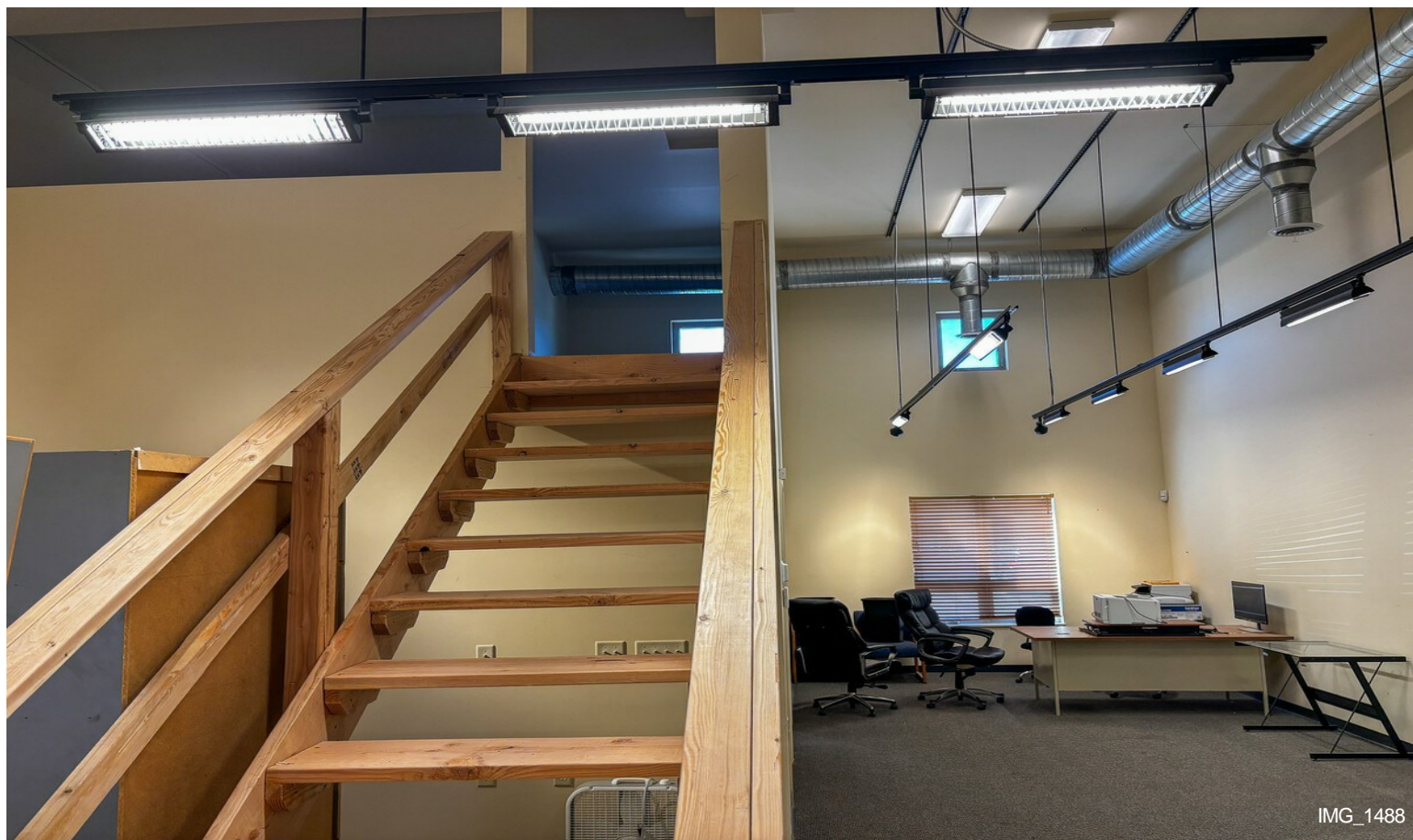
Creative office or medical space with front entry reception area, roll-up door, and storage at the rear; includes a private restroom, kitchenette, and unfinished mezzanine space that can be utilized for additional office space, storage, or meeting room.



2935 Stockyard Rd, Missoula, MT 59808

.Creative office or medical space with front entry reception area, roll-up door, and storage at the rear; includes a private restroom, kitchenette, and unfinished mezzanine space that can be utilized for additional office space, storage, or meeting room.

Property Photos



Property Photos



IMG_1521



dji_fly_20260430_104304_135_1777567563659_photo