

Resurgence Medical Center For Lease

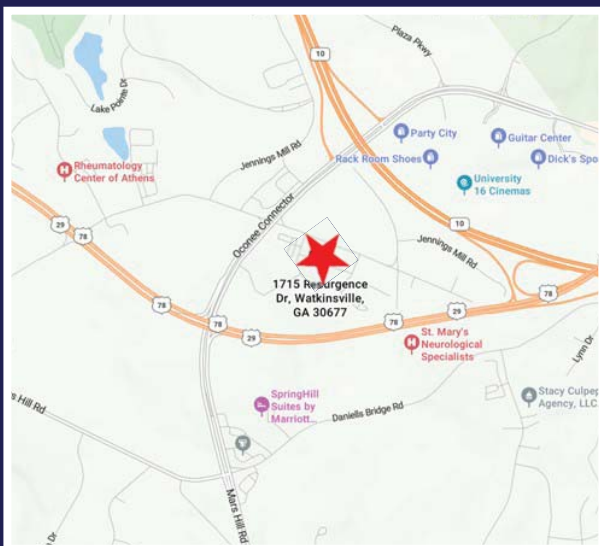
1715 Resurgence Drive
Watkinsville, GA 30677
(Oconee County)



Space Available: 2,522sf - 6,656sf
Lease Rate: \$27.00/sf NNN

Property Details:

- Modern Commercial Medical Office Space
- High Ceilings and Large Windows
- Ample Parking for Staff and Patients
- Versatile Floor Plan for Custom Layout
- Professional Landscaping and Well-Maintained Exterior
- Nearby Referral Network



For more information, please contact:

Jessica Fleming
407-455-2829
jffleming@rg-re.com



Resurgence Medical Center

PROPERTY OVERVIEW

1715 Resurgence Drive, a new commercial property available for lease in Watkinsville, Georgia. Located in growing Oconee County in a prime location including ample parking, high ceilings, and large windows that flood the interior with natural light. With a versatile floor plan, this property offers flexibility for a variety of practices. Tenant improvement available based on credit and term.

****Schedule a tour today
and envision your practice growing at this impressive address****

OFFERING SUMMARY

Lease Rate:	\$27.00 SF/yr (NNN)
Building Size:	27,872 SF
Available SF:	2,522 SF - 6,656 SF
Lot Size:	2.19 Acres
Number of Units:	4
Year Built:	2024
Zoning:	B-1
Market:	Atlanta
Submarket:	Athens



For more information, please contact:

Jessica Fleming

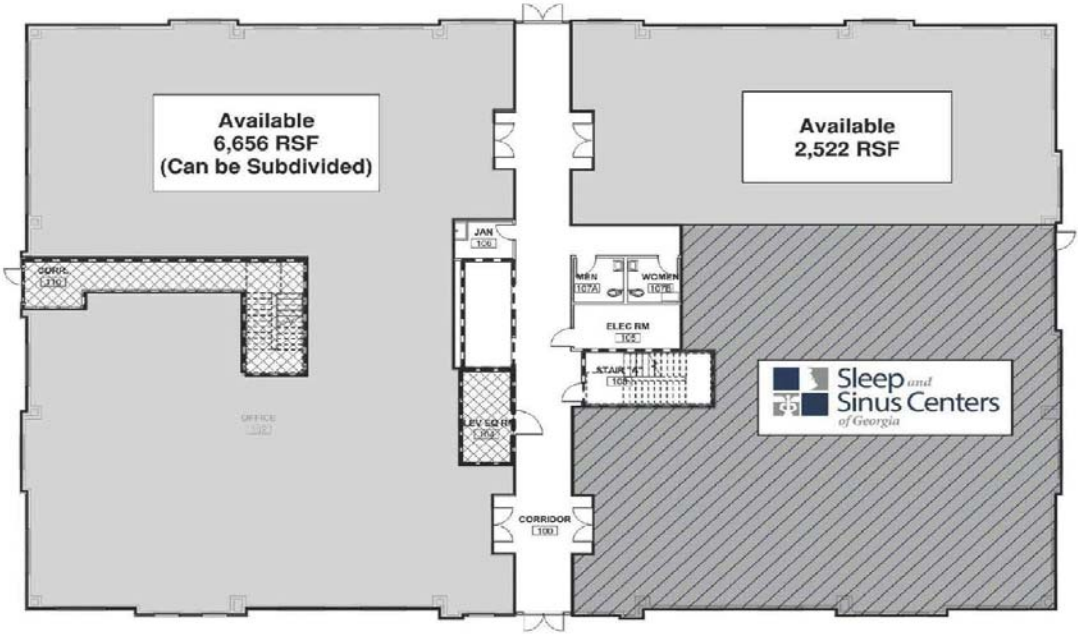
407-455-2829

jfleming@rg-re.com



1715 Resurgence Drive

Floor Plan



1 OCCUPANCY DIAGRAM-LEVEL 1
CS-3 / SCALE: 3/32" = 1'-0"

For more information, please contact:

Jessica Fleming
407-455-2829
jfleming@rg-re.com



Advisor Bio

1715 Resurgence Drive, Watkinsville, Georgia 30677
Resurgence Medical Center



JESSICA FLEMING

jfleming@rg-re.com
(407) 455-2829

PROFESSIONAL BACKGROUND

Jessica Fleming is a commercial real estate broker licensed in both Georgia and Florida. Prior to healthcare real estate, Jessica brought 10+ years of extensive medical sales experience working with physicians and healthcare systems across the Southeast.

Since her alliance with Millenia Partners & RG Real Estate, Jessica's solid medical industry foundation has been instrumental in securing upward of 100 million in transactions across the south. Utilizing her comprehensive knowledge in the medical field, Jessica guides clients through the complexities of physician practice needs, project finance, construction, and development. She prides herself on staying apprized on the state of the market, its trends, and outlooks. Jessica's focus is assisting healthcare growth across the Southeast market and continued personal client relationships while assisting in net leased sales, leasing, landlord representation, and tenant representation.

Specializes in: Medical Office | Investment Sales | Business Development

For more information, please contact:

Jessica Fleming
407-455-2829
jfleming@rg-re.com

