



WESTGROVE INDUSTRIAL PARK

INDUSTRIAL/FLEX • FOR LEASE • 4,080 - 10,370 SF

16500-16530 WESTGROVE DRIVE
ADDISON, TEXAS 75001



FREE RENT INCENTIVES AVAILABLE!

JASON FINCH

972.948.8262

jason@richyoungcompany.com

ALEX BRYAN

972.965.2878

abryan@richyoungcompany.com

OWNED BY:



CenterSquare



WESTGROVE INDUSTRIAL PARK

INDUSTRIAL/FLEX • FOR LEASE • 4,080 – 10,370 SF

Available Suites:

#16514 - 10,370 SF

- (2) Dock-High & (1) Ramped Door
- Partially Air-Conditioned Warehouse

#16520 - 4,080 SF

- (1) Dock-High & (1) Ramped Door

#16526 - 4,080 SF

- (1) Dock-High & (1) Ramped Door

Property Details:

- +/- 17" Clear-Height
- Dock-High and Ramped Loading
- Front-Park Rear-Load
- Adjacent to Addison Airport
- 3-Phase Power Available
- Capital Improvements In Progress

JASON FINCH

972.948.8262

jason@richyoungcompany.com

ALEX BRYAN

972.965.2878

abryan@richyoungcompany.com

OWNED BY:



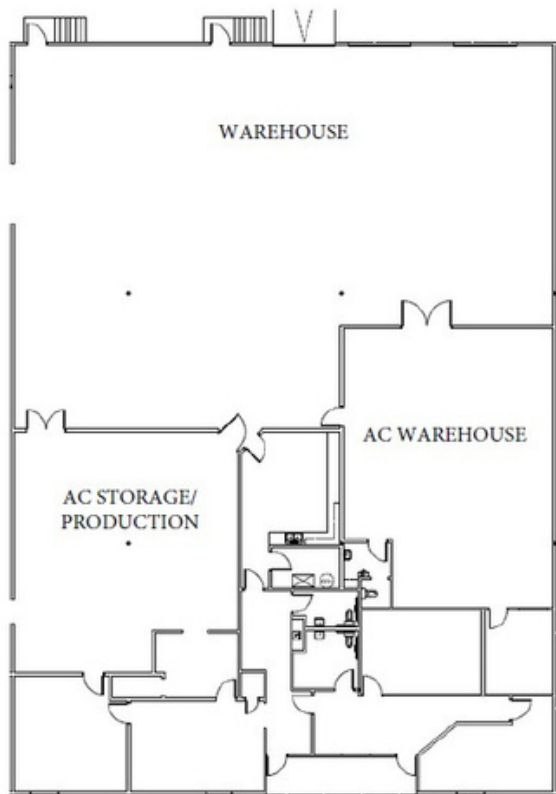
WESTGROVE INDUSTRIAL PARK

INDUSTRIAL/FLEX • FOR LEASE • 4,080 – 10,370 SF

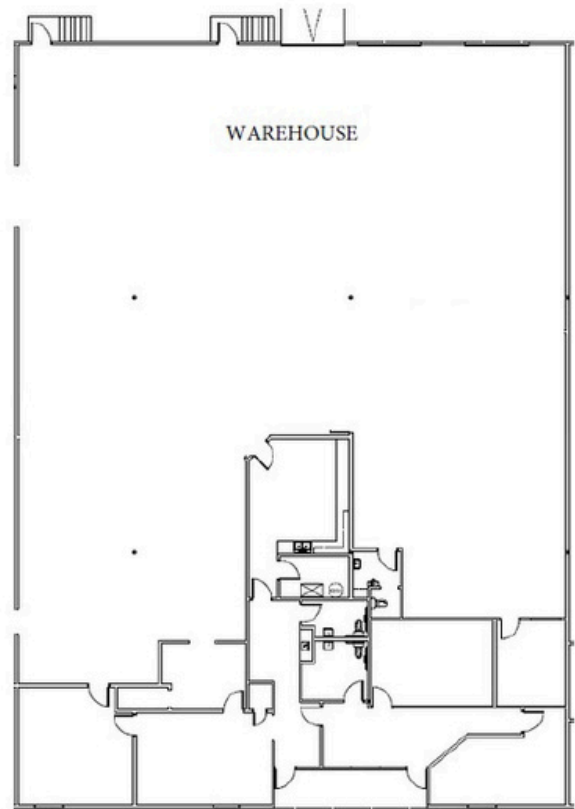
Available Space:

#16514 – 10,370 SF

EXISTING FLOOR PLAN



PROPOSED FLOOR PLAN



JASON FINCH

972.948.8262

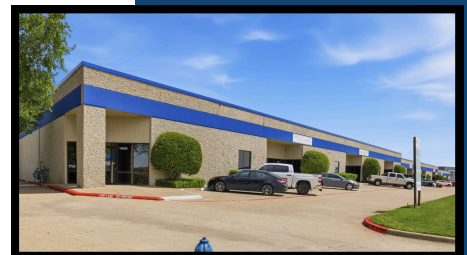
jason@richyoungcompany.com

ALEX BRYAN

972.965.2878

abryan@richyoungcompany.com

OWNED BY:



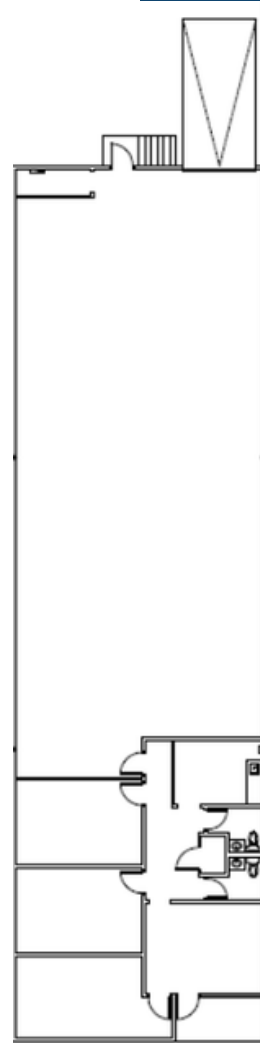
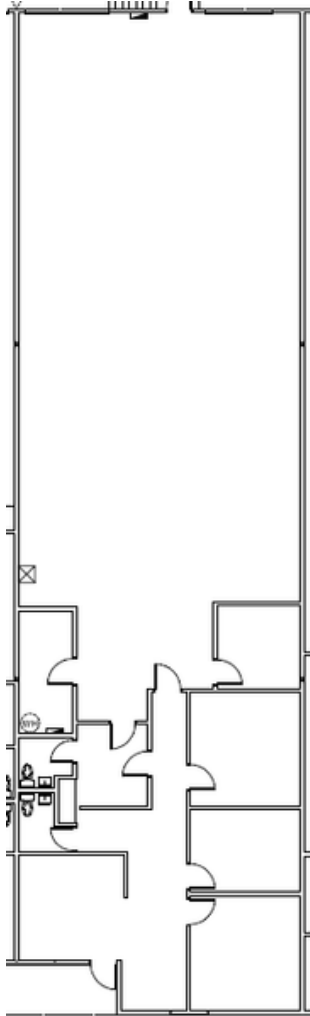
WESTGROVE INDUSTRIAL PARK

INDUSTRIAL/FLEX • FOR LEASE • 4,080 – 10,370 SF

Available Space:

#16520 - 4,080 SF

#16526 - 4,080 SF



JASON FINCH

972.948.8262

jason@richyoungcompany.com

ALEX BRYAN

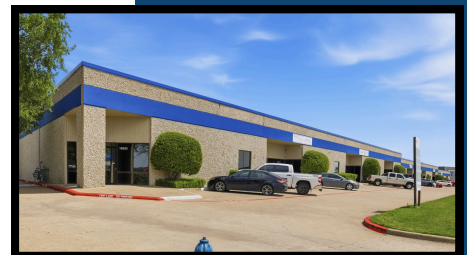
972.965.2878

abryan@richyoungcompany.com

OWNED BY:



CenterSquare



WESTGROVE INDUSTRIAL PARK

INDUSTRIAL/FLEX • FOR LEASE • 4,080 – 10,370 SF



JASON FINCH
972.948.8262
jason@richyoungcompany.com

ALEX BRYAN
972.965.2878
abryan@richyoungcompany.com

OWNED BY:

