

**Maintenance Shop ·
Warehouse · Yard**

FOR SALE OR LEASE

3912
Gilmore Avenue
Bakersfield, CA 93308

Property Highlights

- Comprehensive maintenance/manufacturing facility with heavy grade utilities and outdoor storage space
- Central location with excellent access to Highway 99
- Fully fenced and lit yard area with barbwire for added security and sliding gates
- Approximately 2 acres paved with asphalt, remainder paved with concrete
- Insulated warehouse space with wall mounted evaporative coolers for employee comfort
- Numerous cranes throughout with varying capacity to suit a variety of maintenance and manufacturing operations
- Equipped with air compressors, paint booth, test booths, wash bay, phosphate tank



The information contained herein may have been obtained from sources other than ASU Commercial. We have not verified such information and make no guarantees, warranties or representations about such information. It is your responsibility to independently confirm its accuracy and completeness prior to purchasing/leasing the property.



Dylan J. Lym ▪ Vice President ▪ 661 885 6949 ▪ dylan@asuassociates.com ▪ CA RE #02103385
Bryan T. Haupt ▪ Senior Vice President ▪ 661 616 3588 ▪ bthaupt@asuassociates.com ▪ CA RE #00785717
11601 Bolthouse Drive Suite 110 ▪ Bakersfield, CA 93311 ▪ 661 862 5454 main ▪ 661 862 5444 fax

Maintenance Shop ▪ Warehouse ▪ Yard For Sale or Lease

Property Information

3912 Gilmore Avenue - Bakersfield, CA

Property Information

- **Total Building Area** 26,124± SF
- **Shop/Warehouse** 23,078± SF
- **Office** 2,820± SF
- **Canopy & Other Covered Storage** 6,070± SF (Not included in total building area)
- **Lot Size** 3.10± Acres
- **Zoning** M-3 (Heavy Industrial), County of Kern
- **Construction** Insulated metal and concrete block
- **APNs** 332-161-40 & 332-050-06

Utilities



PG&E 1,800
Amps Total
480/277 Volt,
3 phase
4 Wire



PG&E
4" High
Pressure Line



California
Water
Service



Septic

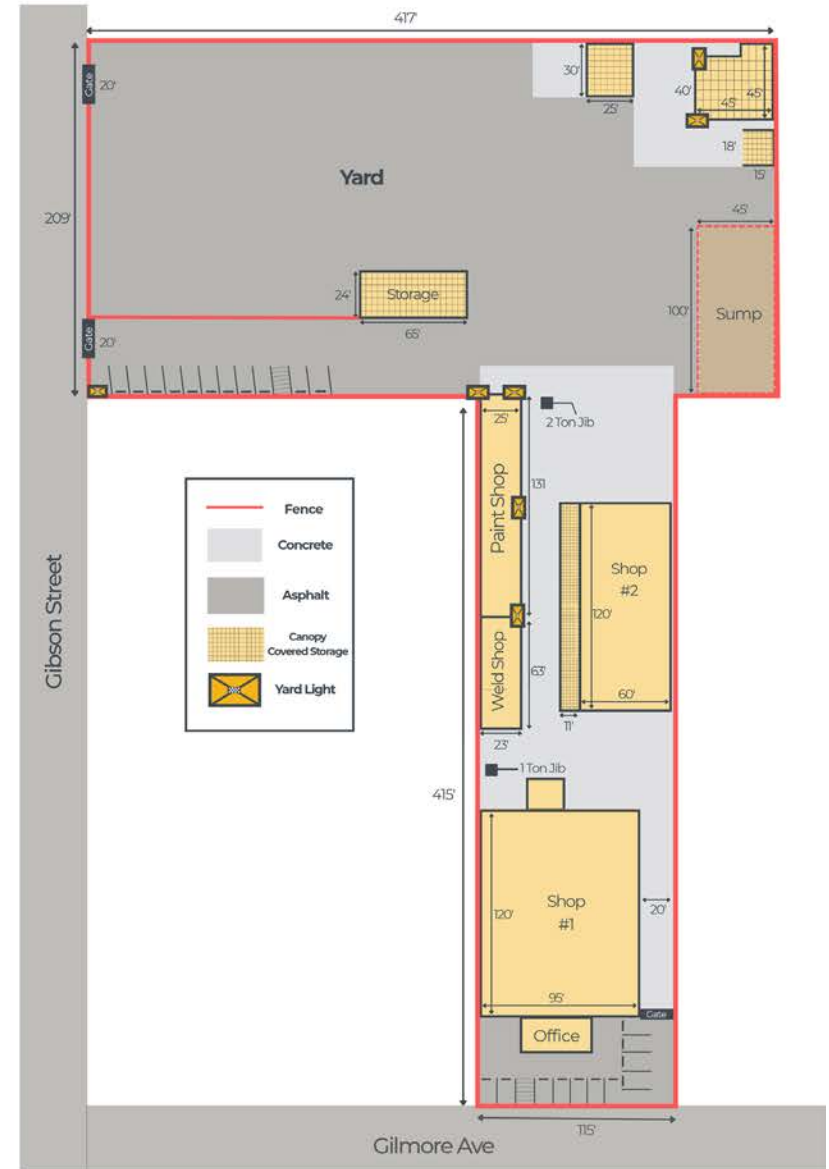
Lease Rate

- \$25,000/Month, NNN

Sale Price

- \$3,695,000

*Plans not guaranteed, for illustration purposes only. Plans not to scale.



Maintenance Shop ▪ Warehouse ▪ Yard For Sale or Lease

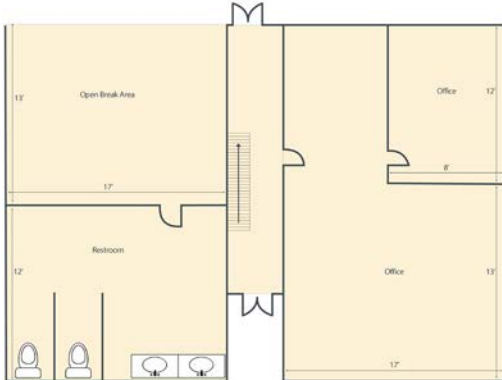
Shop 1 Details & Floor Plan

3912 Gilmore Avenue - Bakersfield, CA

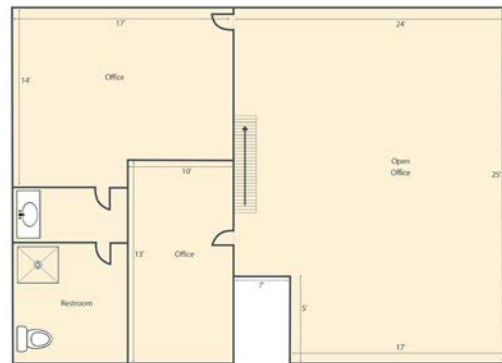
Shop 1

- **Building Size**
 - Shop/Warehouse 13,780± SF
 - Office 11,800± SF
 - Office 1,980± SF (Two-Story)
- **Cranes**
 - Two (2) 2-ton bridge
 - Eight (8) 1-ton bridge
 - One (1) 3/4-ton bridge
 - One (1) 1/4-ton bridge
 - One (1) 1-ton jib (outdoor)
 - Bridge heights - 11'-12'
 - 13'-18'
- **Clear Height**
- **Ground Level R.U. Doors**
 - One (1) 12'x13'
 - Two (2) 12'-12'
 - One (1) 12'x11'
 - One (1) 8'-9'
 - Four (4)
- **Evaporative Coolers**
- Compressed air lines throughout

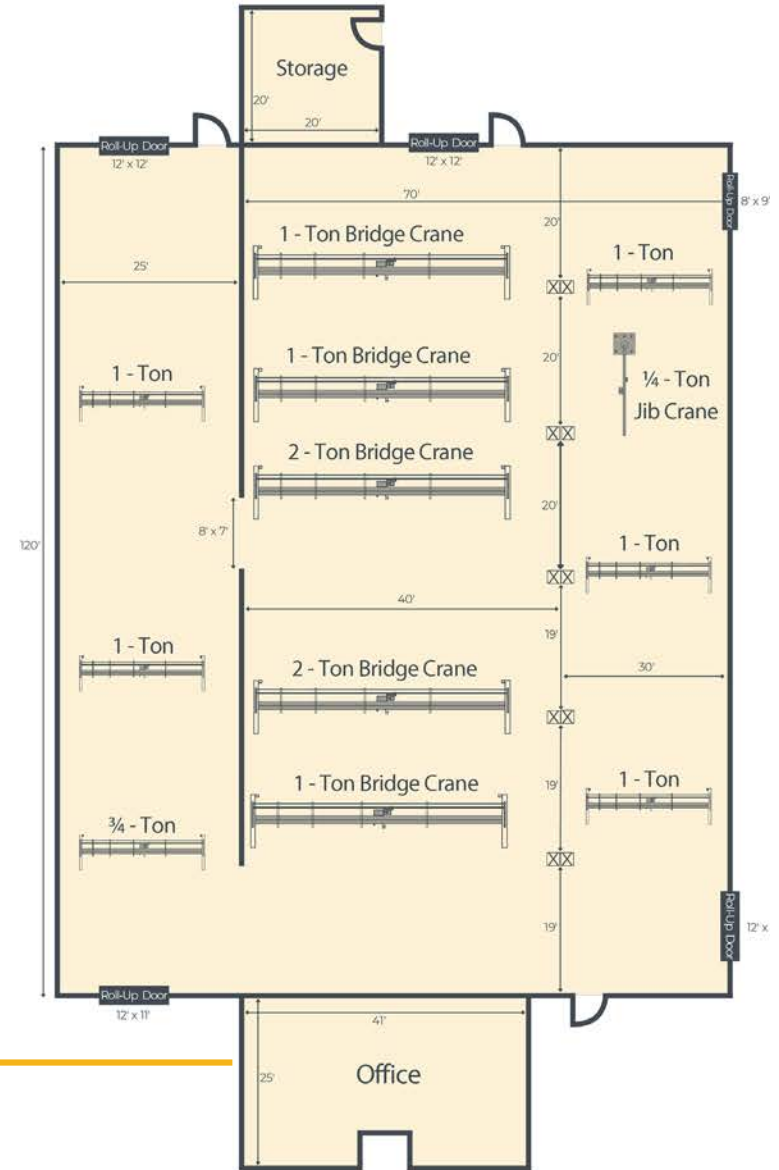
Office Floor Plans



First Floor



Second Floor



*Plans not guaranteed, for illustration purposes only. Plans not to scale.

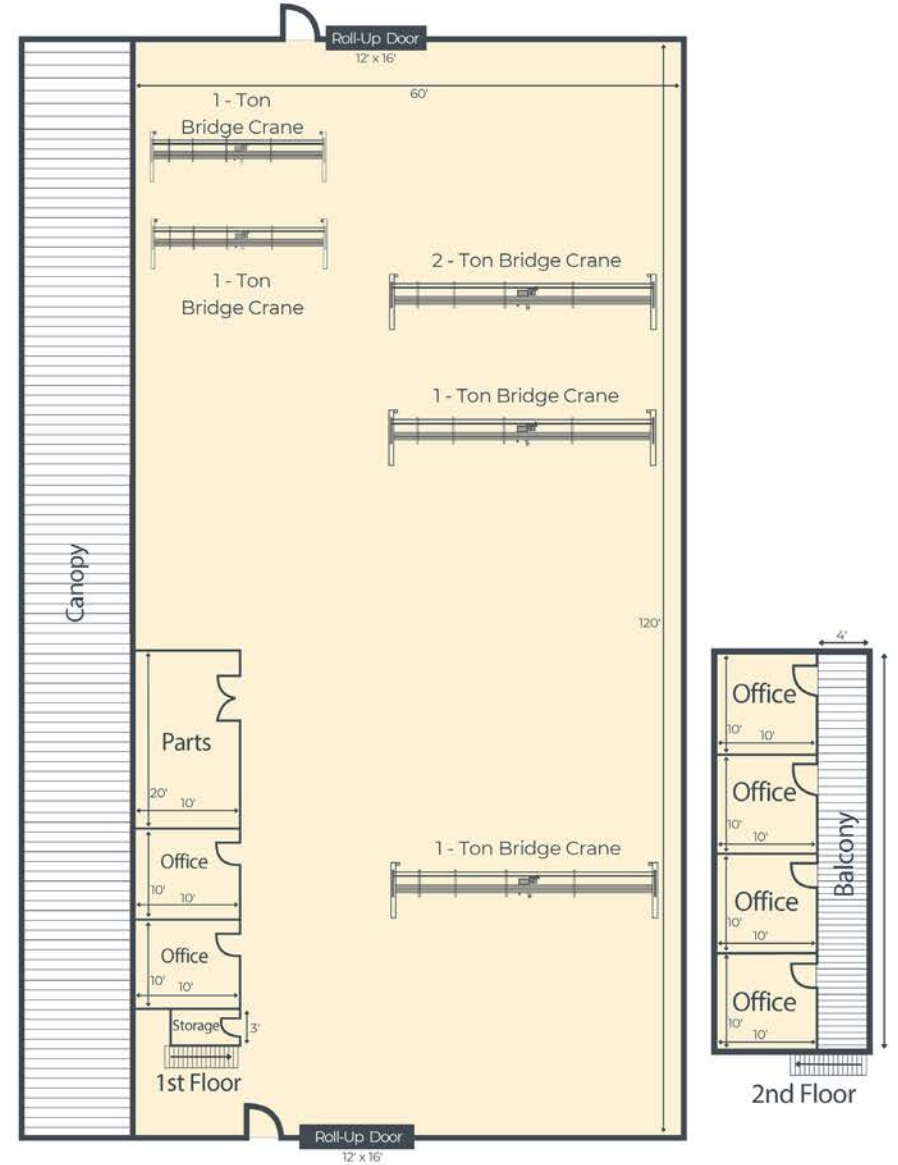
Maintenance Shop ▪ Warehouse ▪ Yard For Sale or Lease

Shop 2 Details & Floor Plan

3912 Gilmore Avenue - Bakersfield, CA

Shop 2

- **Building Size**
 - Shop/Warehouse 7,620± SF (Clear Span-No Columns)
 - Office 6,780± SF
 - Office 840± SF
 - Canopy ±1,320 SF (Not included in total square footage)
- **Cranes**
 - One (1) 2-ton bridge
 - Four (4) 1-ton bridge
 - Bridge heights - 17'
- **Clear Height** 19'-20'
- **Ground Level R.U. Doors** Two (2) 12'x16'
- **Exhaust Fans** Two (2)
- Compressed air lines throughout



*Plans not guaranteed, for illustration purposes only. Plans not to scale.

Maintenance Shop ▪ Warehouse ▪ Yard For Sale or Lease

Weld & Paint Shop Details & Floor Plan

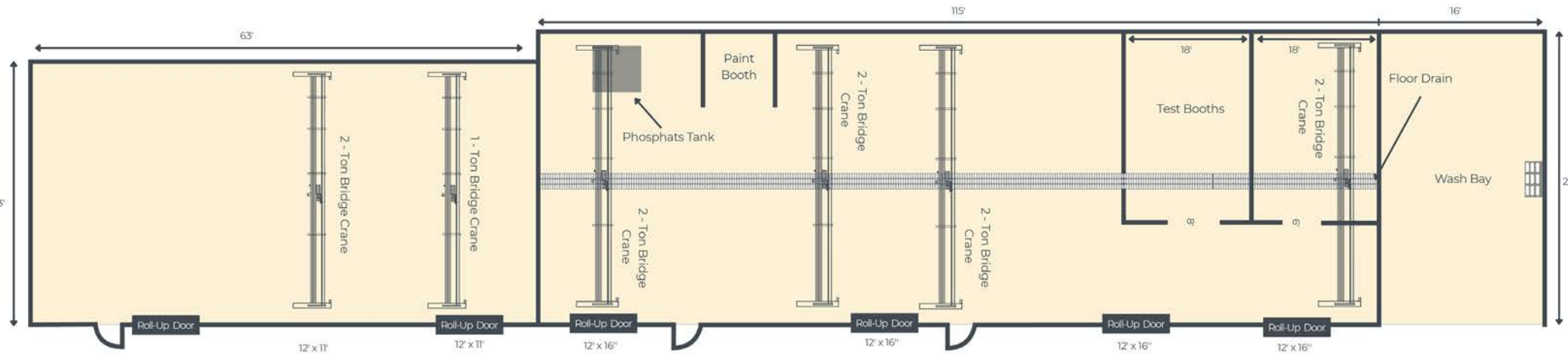
3912 Gilmore Avenue - Bakersfield, CA

Weld & Paint Shop

- **Building Size** 4,724± SF
 - **Weld Shop** 1,449± SF
 - **Paint Shop** 3,275± SF*
 - **Wash Bay** 400± SF* (Equipped with water recycling system)
- **Cranes** Five (5) 2 ton bridge
One (1) 1 ton bridge
Bridge heights - 10'-16'

*Constructed with concrete block on three (3) sides

- **Clear Height** 12'-20'
- **Ground Level R.U. Doors** Four (4) 12'x16'
Two (2) 12'x11'
- **Evaporative Coolers** Five (5)
- 800 gallon phosphate tank
- 8'x10' paint booth
- Two (2) concrete block test booths with metal casing
- Compressed air lines throughout



*Plans deemed to be accurate, but not guaranteed. Plan not to scale.

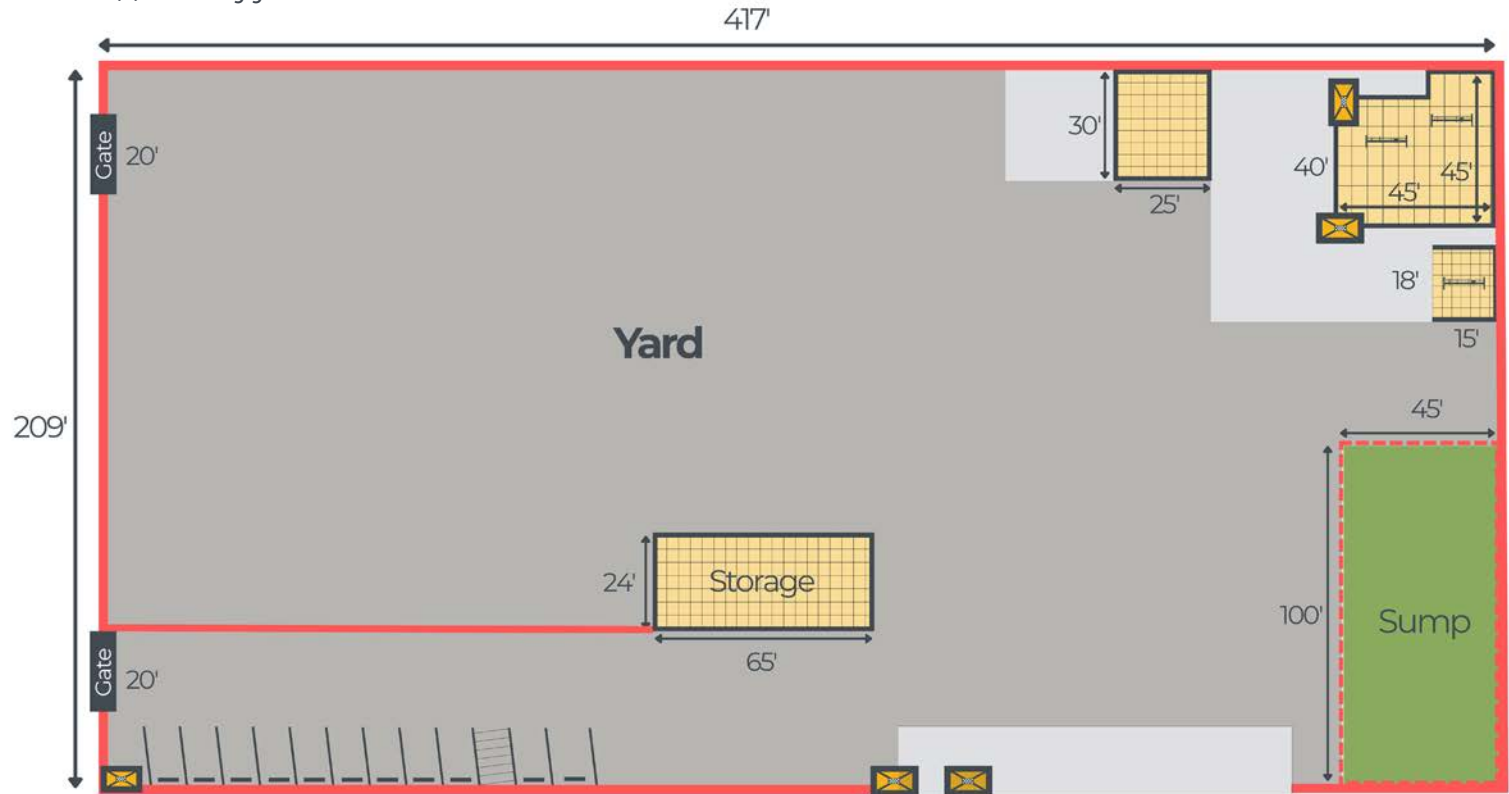
Maintenance Shop ▪ Warehouse ▪ Yard For Sale or Lease

Yard Details

3912 Gilmore Avenue - Bakersfield, CA

Yard Area

- **Size** 2± Acres
- **Canopy Area** 2,920± SF (Not included in total building area)
- **Enclosed Parts Storage Shed** 1,560± SF (Not included in total building area)
- **Cranes** Three (3) 1/2 ton bridge
Bridge height - 10'-12'
- **Gates** Two (2) 20' sliding gates
- Fully paved with asphalt and concrete
- Fenced and lit



*Plans deemed to be accurate, but not guaranteed. Plan not to scale.

**Maintenance Shop • Warehouse • Yard
For Sale or Lease**

Property Photos

3912 Gilmore Avenue • Bakersfield, CA



**Maintenance Shop • Warehouse • Yard
For Sale or Lease**

Property Photos

3912 Gilmore Avenue • Bakersfield, CA



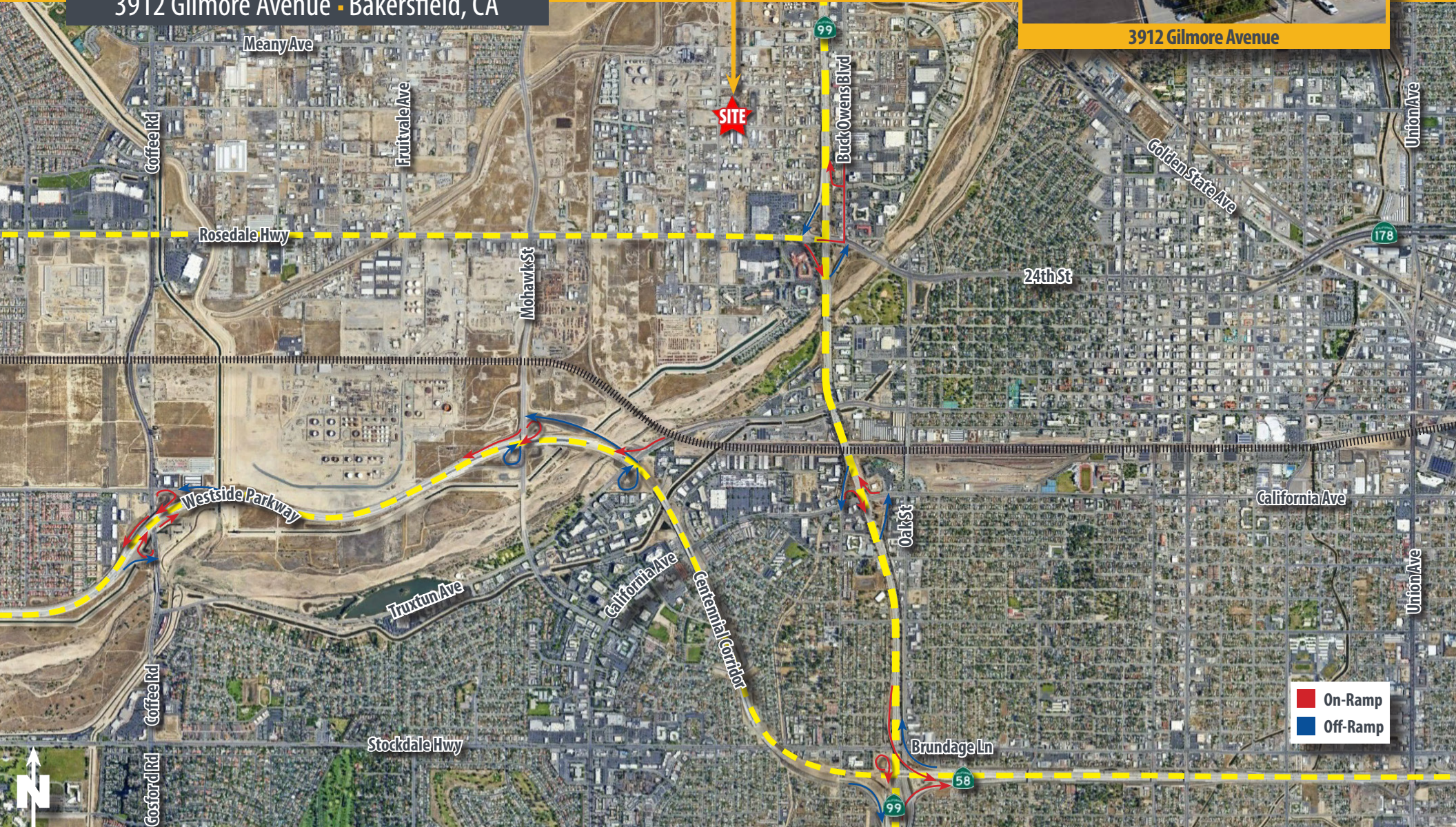
Maintenance Shop ▪ Warehouse ▪ Yard For Sale or Lease

Aerial Map

3912 Gilmore Avenue ▪ Bakersfield, CA



3912 Gilmore Avenue



Dylan J. Lym ▪ Vice President ▪ 661 885 6949 ▪ dylan@asuassociates.com ▪ CA RE #02103385
Bryan T. Haupt ▪ Senior Vice President ▪ 661 616 3588 ▪ bthaupt@asuassociates.com ▪ CA RE #00785717
11601 Bolthouse Drive Suite 110 ▪ Bakersfield, CA 93311 ▪ 661 862 5454 main ▪ 661 862 5444 fax

