

FOR LEASE

20

DE BOERS DRIVE
TORONTO

domo

THE **domo** CENTRE

MIXED USE LEASING:
OFFICE // RETAIL // MEDICAL

CBRE



Please visit our website at:
www.domocentre.ca

20 DE BOERS DRIVE

TORONTO • ON

CBRE



HIGHLIGHTS

- + 3 storey high common atrium, green wall and cafe
- + Office configurations with up to 20' high ceiling heights



Six levels of interior parking above grade interlinked with your office floor



PROPERTY DETAILS

- + 300 meters from Downsview Subway Station to Downtown Toronto and future link to York University and Vaughan Center
- + Direct central access to Highway 401 and 400 series of highways, 20 minutes to airport
- + Minimum 10' high ceilings, building standard 9' high solid wood doors
- + Suites designed and customized to your specific spacial needs

SUSTAINABILITY AT THE DOMO CENTRE



GEOTHERMAL SYSTEM

Tenant controlled suite specific heating and cooling units, interconnected with an energy efficient geothermal system with 33,000 feet of underground transfer piping



GREEN WALL

Biofilter living green wall improves indoor air quality by removing common indoor air pollutants and creating energy rich oxygen



Please visit our website at:
www.domocentre.ca

20 DE BOERS DRIVE

TORONTO • ON

SUITES AVAILABLE

| Suite # | Size (SF) | Rental Rate (PSF) |
|----------------------|------------------|---|
| Suite 104 | 3,183 | \$ 18.95 |
| Suite 109 | 4,228 | \$ 15.95 |
| Suite 133 | 449 | \$ 1,299 per month |
| Suite 170 | 1,590 | \$ 15.95 |
| Suite 175 | 1,661 | \$ 18.95 |
| Suite 200 | 10,431 | \$ 15.95 |
| Suite 207 | 1,408 | \$ 4,499 per month LEASED |
| Suite 313 | 5,357 | \$ 17.95 |
| Suite 500 | 4,137 | \$ 18.45 |

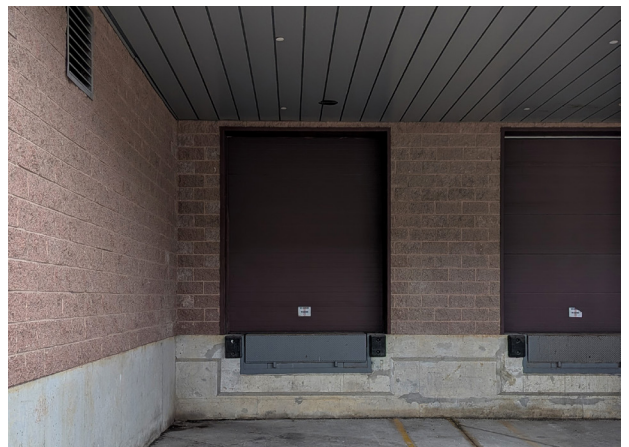
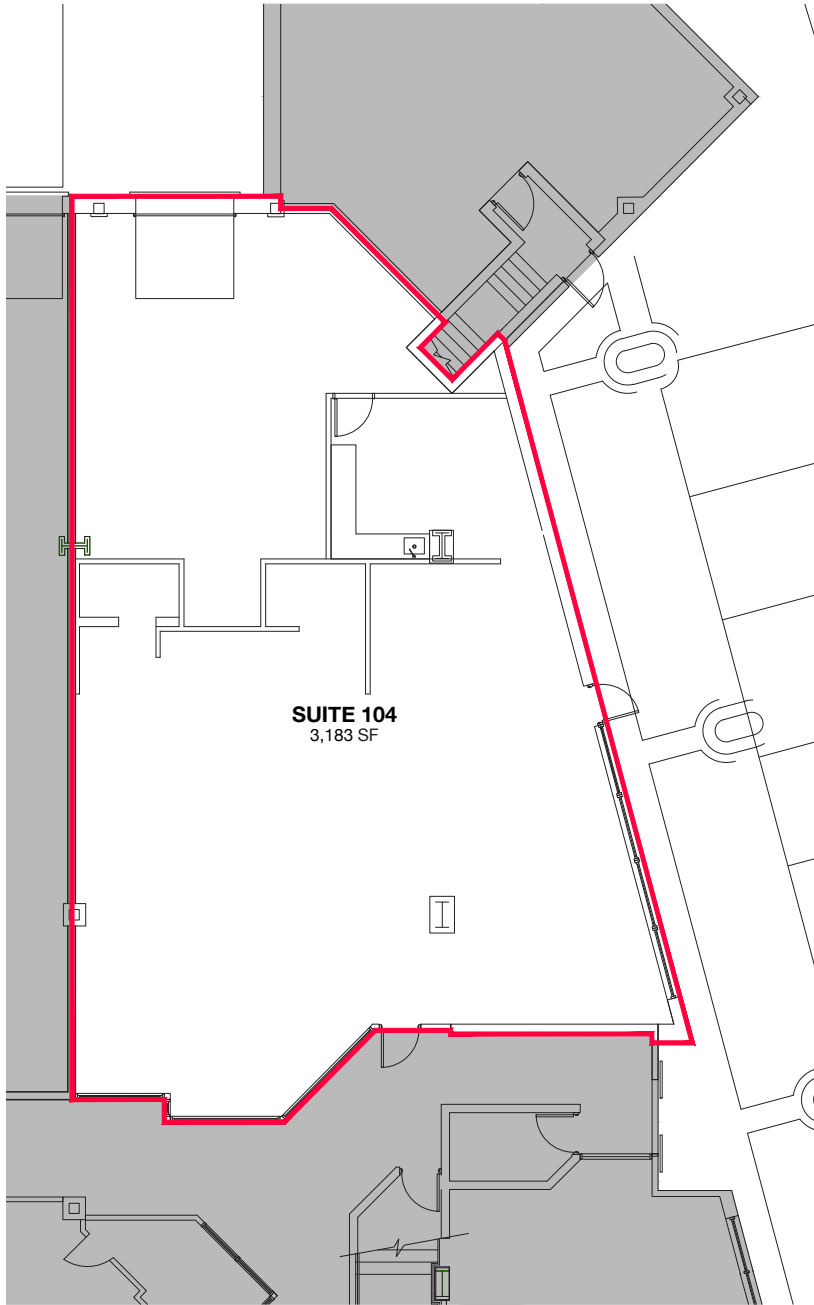
Additional Rent (2025) : \$15.66



Tenant access to rooftop gardens, or options for your own private deck with plants and trees

20 DE BOERS DRIVE

TORONTO • ON



THE **domo** CENTRE

DRAWING:
SUITE 104

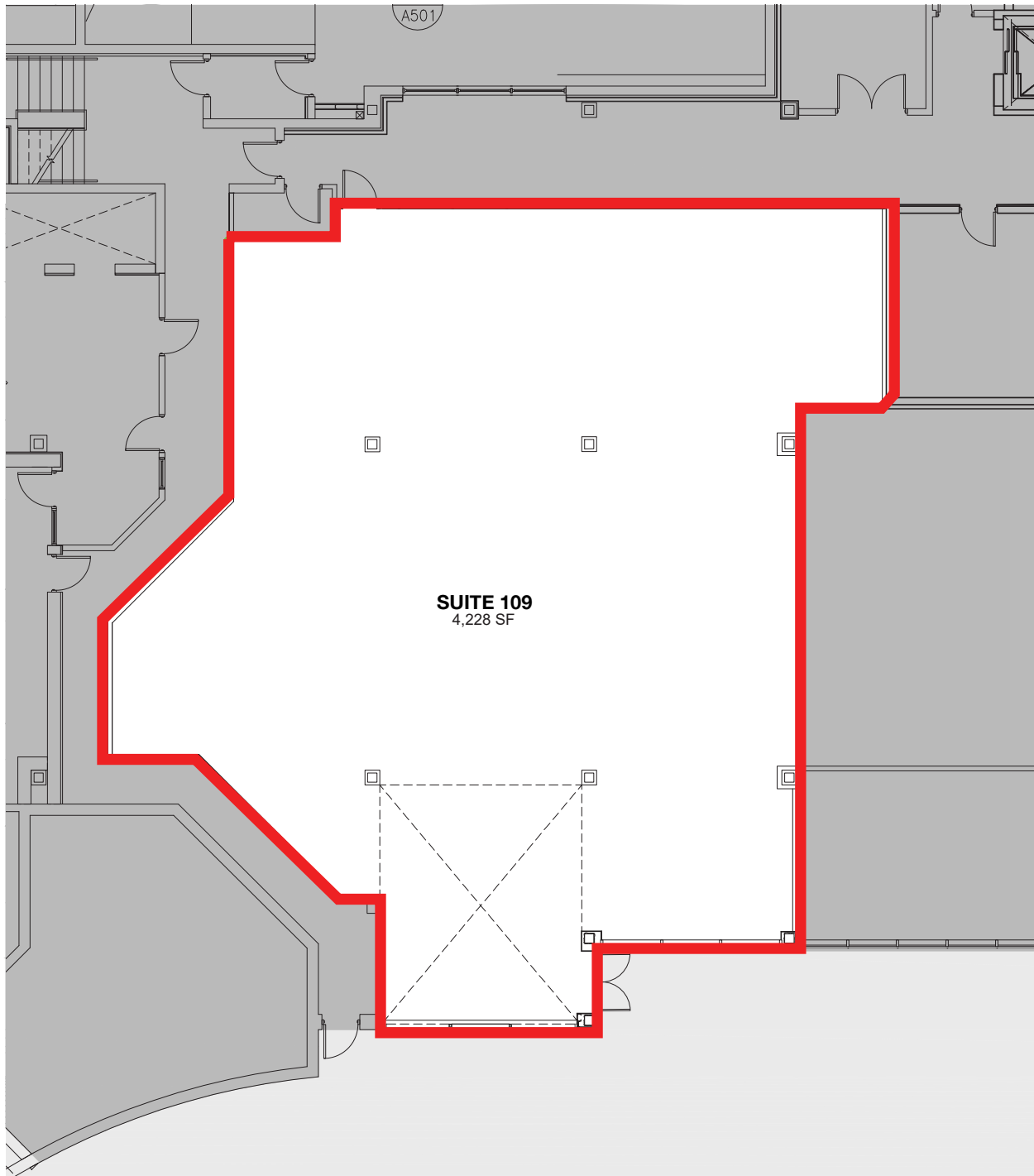
GROSS SQUARE FEET:
3,183 SF

SCALE:
1:150

CBRE

20 DE BOERS DRIVE

TORONTO • ON



THE **domo** CENTRE

DRAWING:
SUITE 109

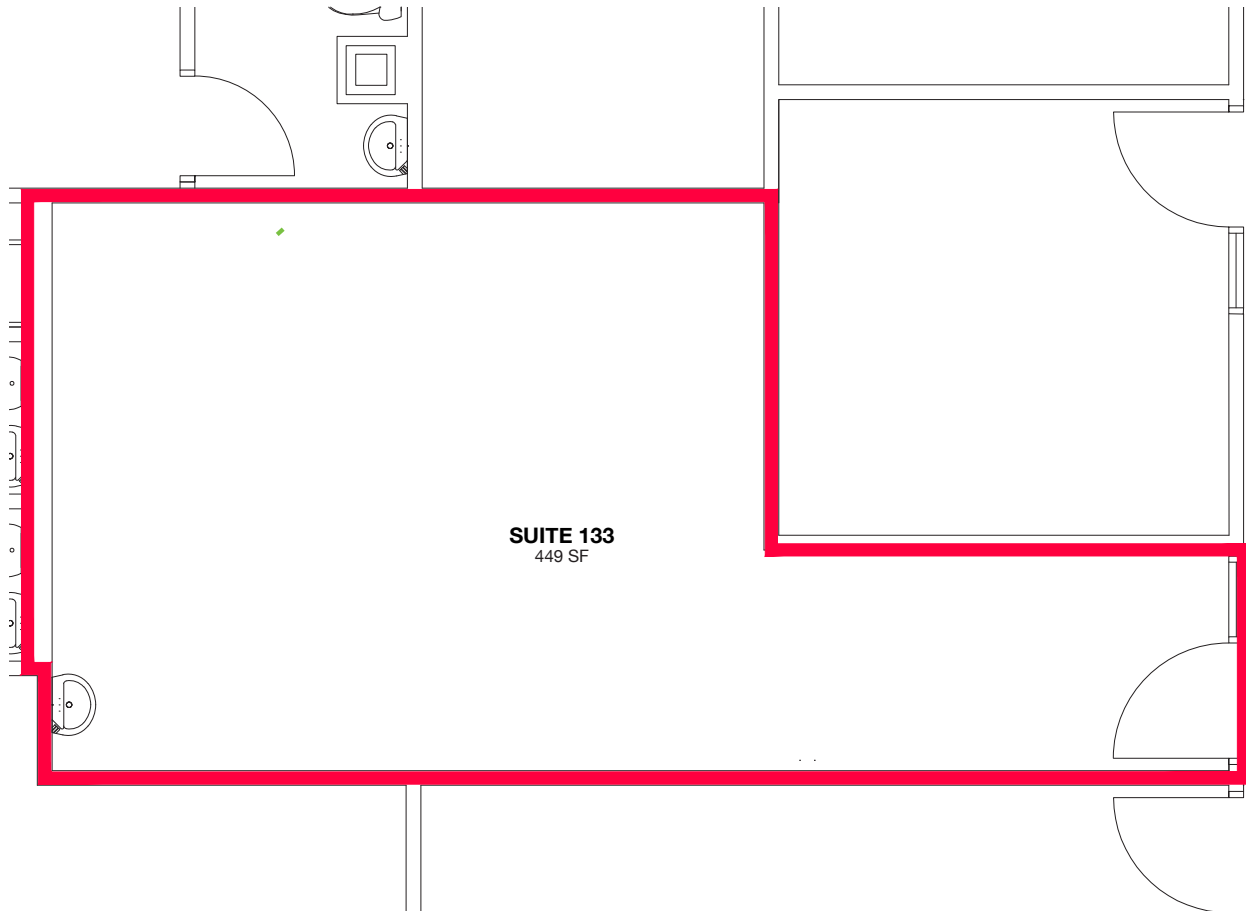
GROSS SQUARE FEET:
4,228 SF

SCALE:
1:150

CBRE

20 DE BOERS DRIVE

TORONTO • ON



THE **domo** CENTRE

DRAWING:
SUITE 133

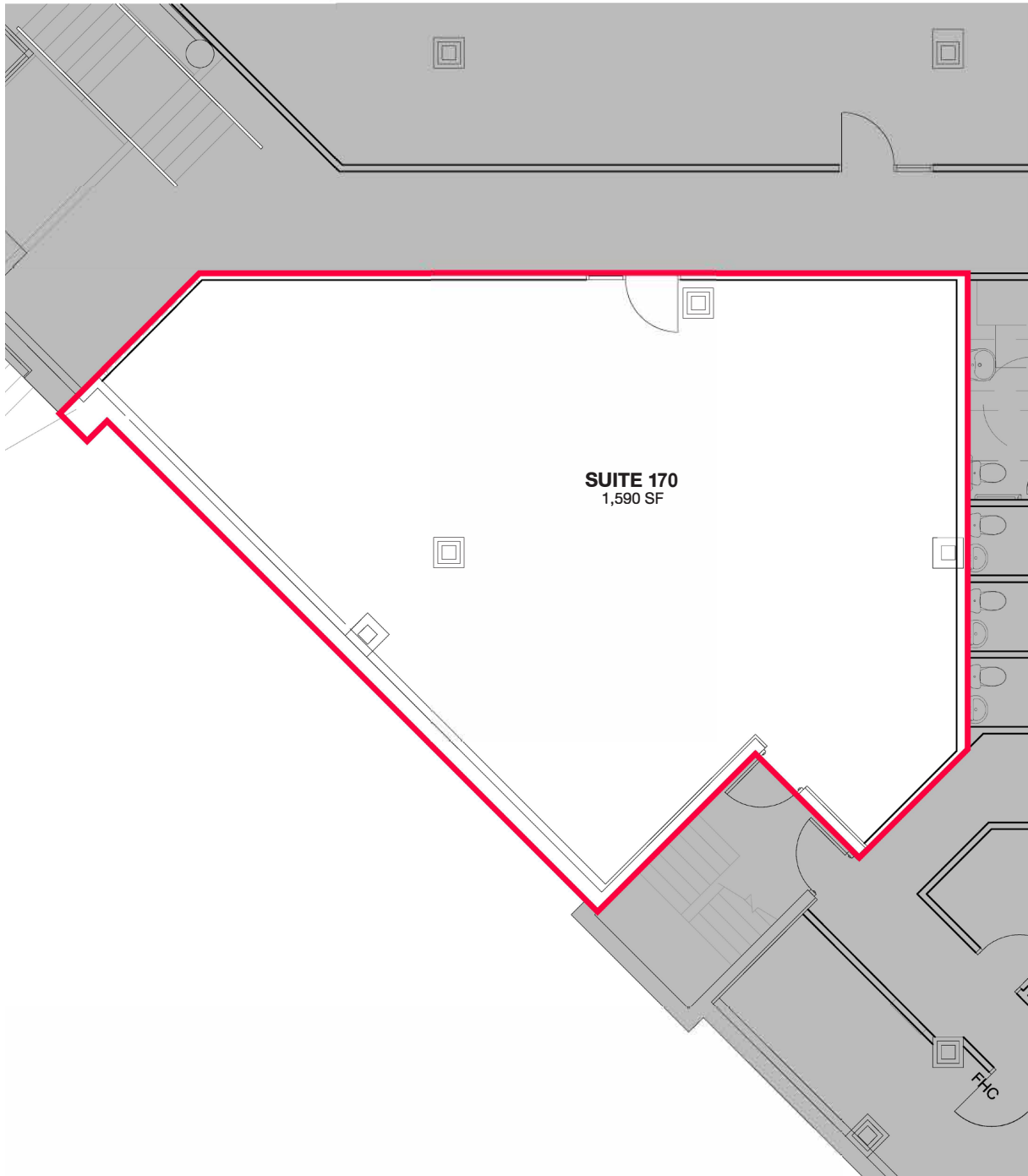
GROSS SQUARE FEET:
449 SF

SCALE:
1:150

CBRE

20 DE BOERS DRIVE

TORONTO • ON



SUITE 170
1,590 SF

THE **domo** CENTRE

DRAWING:
SUITE 170

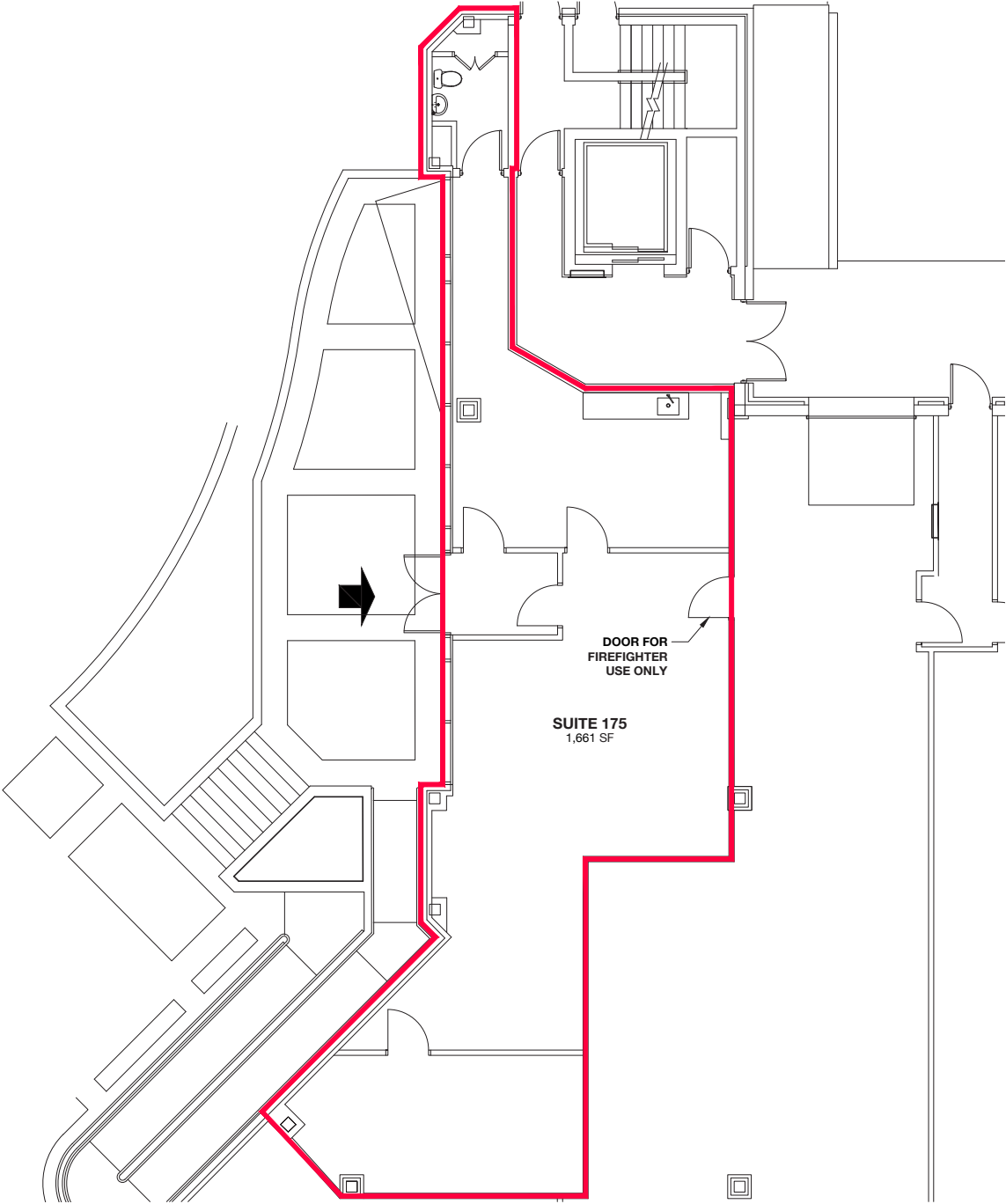
GROSS SQUARE FEET:
1,590 SF

SCALE:
1:100

CBRE

20 DE BOERS DRIVE

TORONTO • ON



THE **domo** CENTRE

DRAWING:
SUITE 175

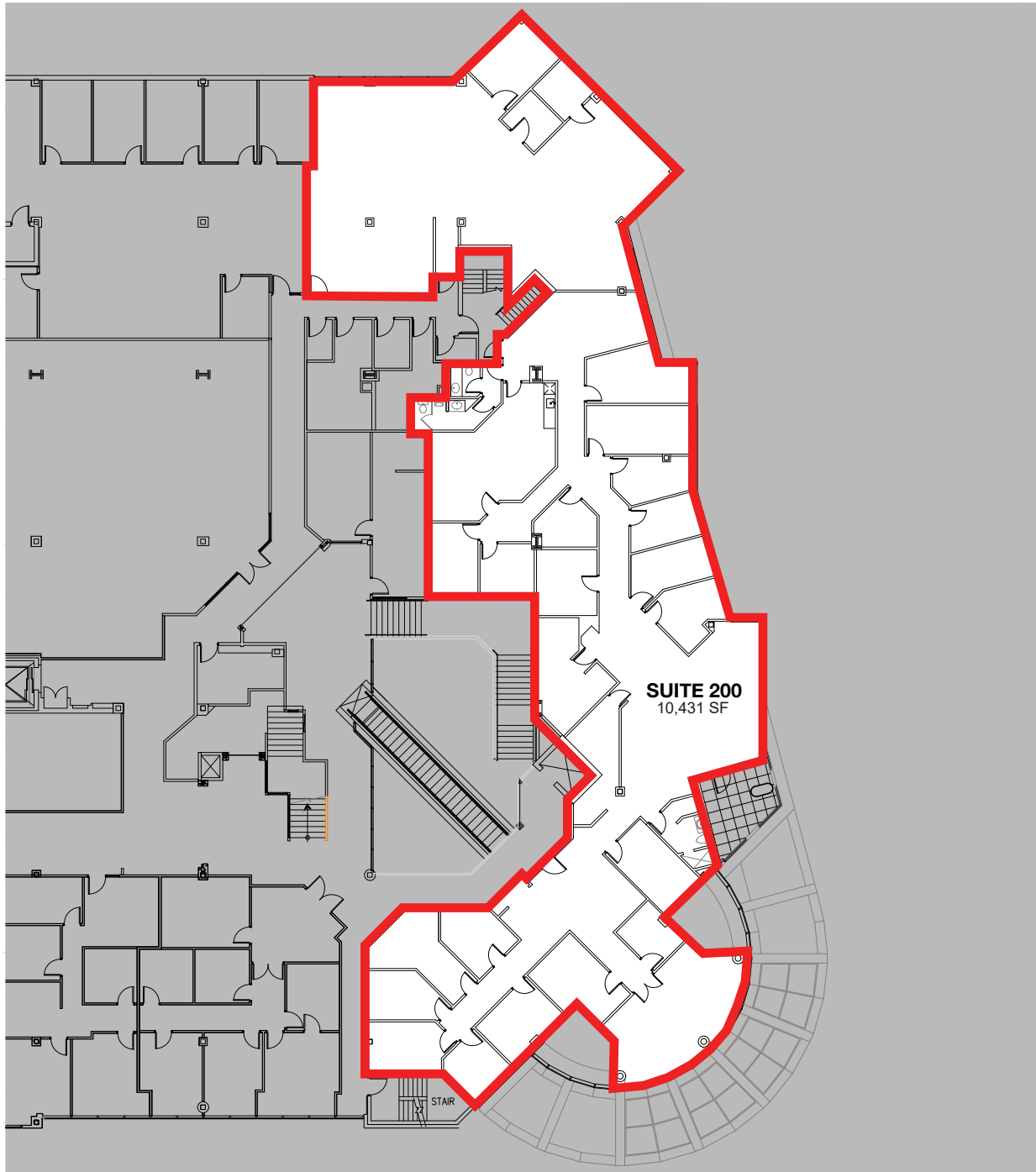
GROSS SQUARE FEET:
1,661 SF

SCALE:
NTS

CBRE

20 DE BOERS DRIVE

TORONTO • ON



THE **domo** CENTRE

DRAWING:
SUITE 200

GROSS SQUARE FEET:
10,431 SF

SCALE:
1:300

CBRE



Please visit our website at:
www.domocentre.ca

20 DE BOERS DRIVE

TORONTO • ON

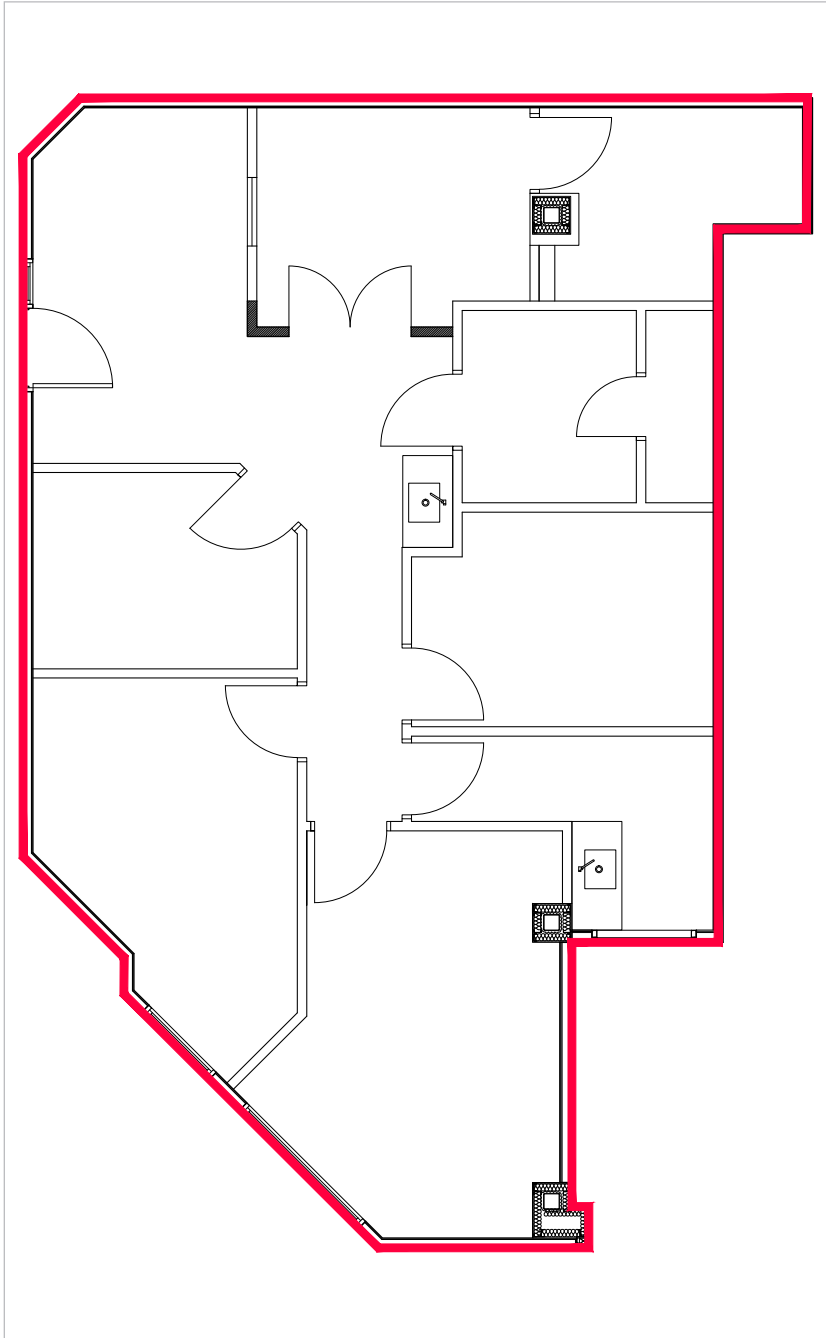
SUITE 200 PHOTOS



20 DE BOERS DRIVE

TORONTO • ON

LEASED



THE **domo** CENTRE

DRAWING:
SUITE 207

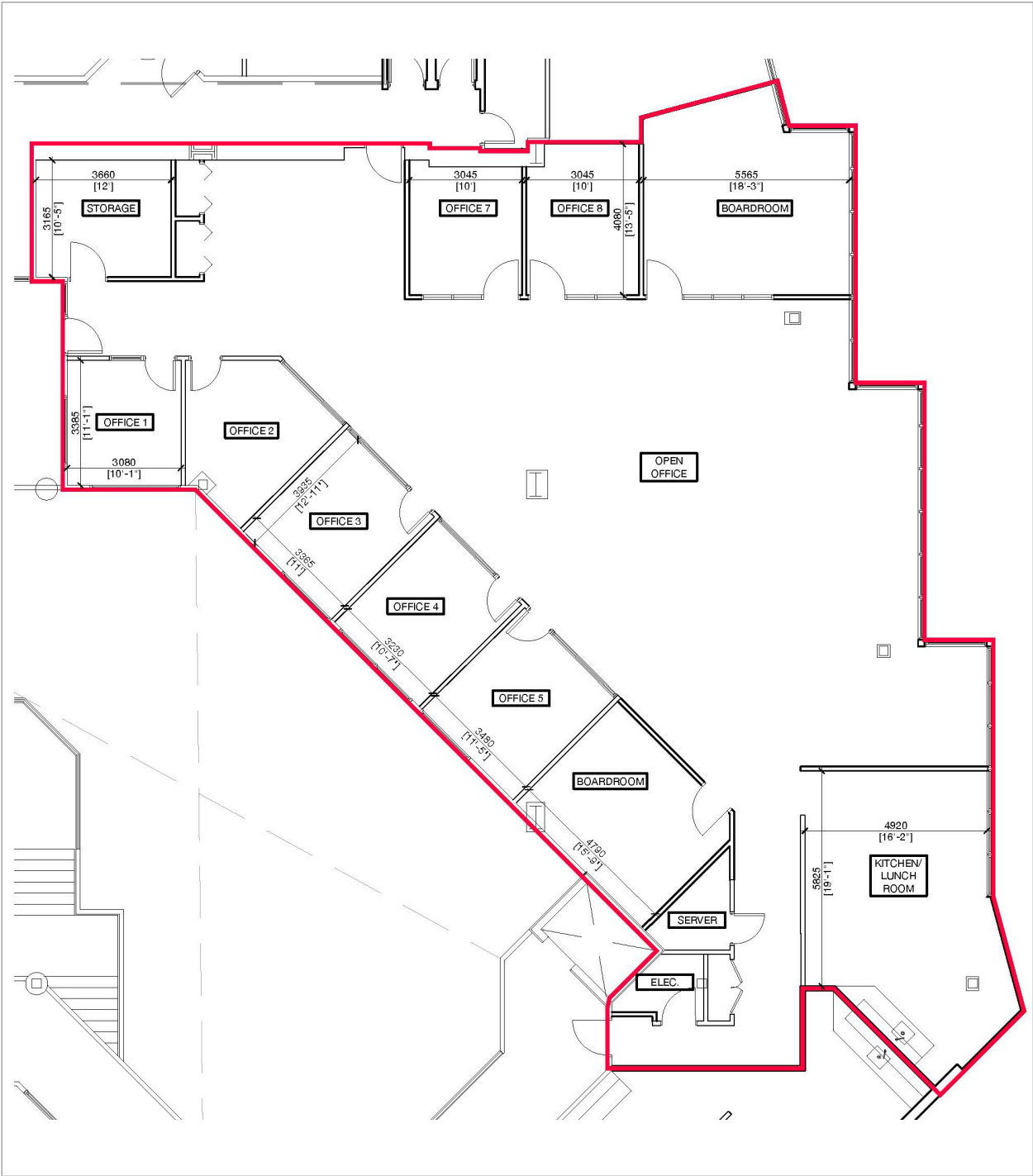
GROSS SQUARE FEET:
1,408 SF

SCALE:
NTS

CBRE

20 DE BOERS DRIVE

TORONTO • ON



THE **domo** CENTRE

DRAWING:
SUITE 313

GROSS SQUARE FEET:
5,357 SF

SCALE:
NTS



Please visit our website at:
www.domocentre.ca

20 DE BOERS DRIVE

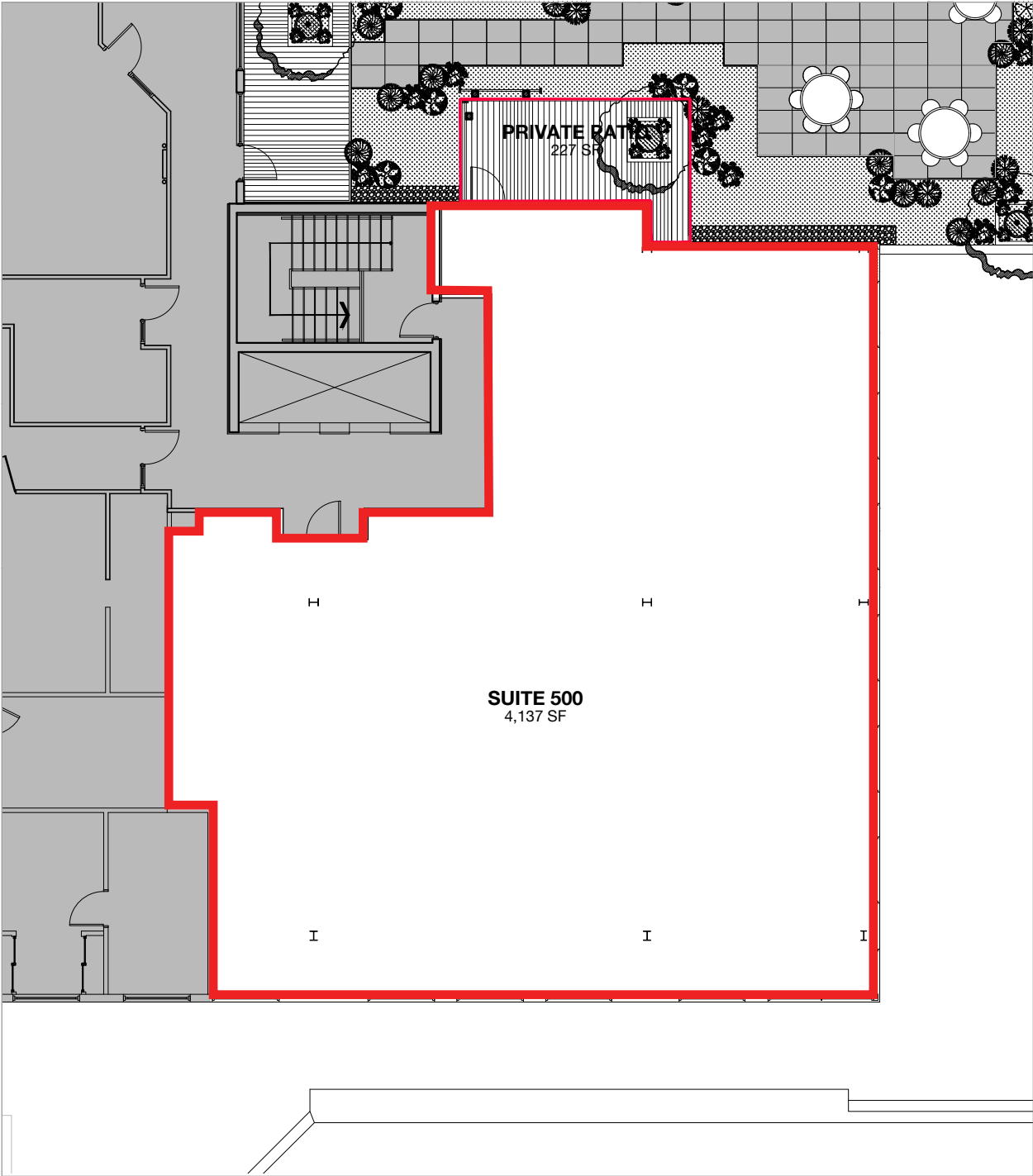
TORONTO • ON

SUITE 313 PHOTOS



20 DE BOERS DRIVE

TORONTO • ON



THE **domo** CENTRE

DRAWING:
SUITE 500

GROSS SQUARE FEET:
4,137 SF

SCALE:
1:150

CBRE



Please visit our website at:
www.domocentre.ca

20 DE BOERS DRIVE

TORONTO • ON

SUITE 500 PHOTOS



20 DE BOERS DRIVE

TORONTO • ON



ADDITIONAL PHOTOS

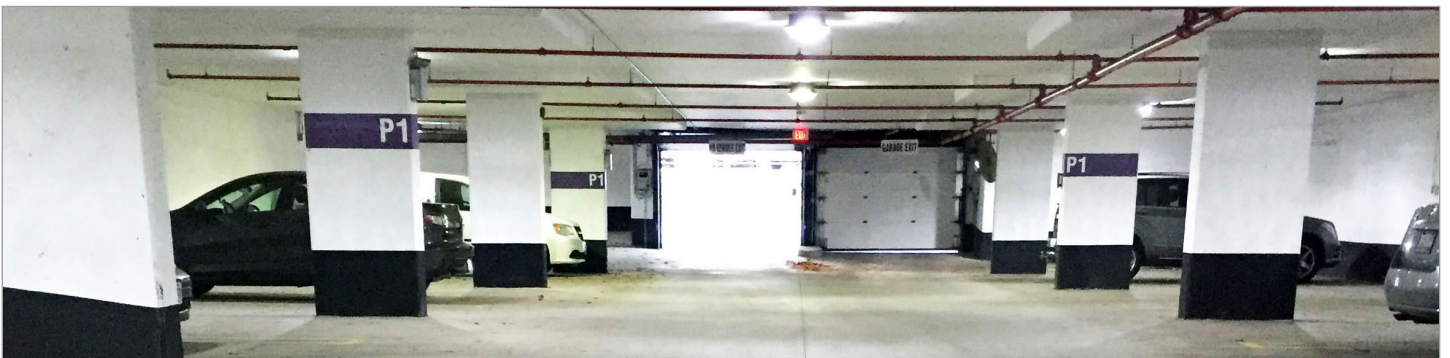


20 DE BOERS DRIVE

TORONTO • ON



ADDITIONAL PHOTOS



20 DE BOERS DRIVE

TORONTO • ON



ADDITIONAL PHOTOS



20 DE BOERS DRIVE

TORONTO • ON



SHEPPARD AVE W



ALLEN RD



Please visit our website at:
www.domocentre.ca

For further information, please contact:

Terry Di Felice*, MBA

Senior Vice President

416 495 6209

terry.difelice@cbre.com

CBRE Limited Brokerage
2005 Sheppard Avenue East,
Suite 800,
Toronto, ON M2J 5B4

CBRE

*Sales Representative | 2025. This disclaimer shall apply to CBRE Limited, Real Estate Brokerage, and to all other divisions of the Corporation; to include all employees and independent contractors ("CBRE"). The information set out herein, including, without limitation, any projections, images, opinions, assumptions and estimates obtained from third parties (the "Information") has not been verified by CBRE, and CBRE does not represent, warrant or guarantee the accuracy, correctness and completeness of the Information. CBRE does not accept or assume any responsibility or liability, direct or consequential, for the Information or the recipient's reliance upon the Information. The recipient of the Information should take such steps as the recipient may deem necessary to verify the Information prior to placing any reliance upon the Information. The Information may change and any property described in the Information may be withdrawn from the market at any time without notice or obligation to the recipient from CBRE. CBRE and the CBRE logo are the service marks of CBRE Limited and/or its affiliated or related companies in other countries. All other marks displayed on this document are the property of their respective owners. All Rights Reserved. Mapping Sources: Canadian Mapping Services canadamapping@cbre.com; MapPoint, DMTI Spatial, EnviroNics Analytics, Microsoft Bing, Google Earth