

A modern office interior with a red sofa, a colorful surfboard, and a meeting table. The room features large windows with blinds, a wooden ceiling, and a light-colored floor. A large blue graphic overlay is in the top right corner.

THE WATER COURT SUBLEASE

SUITE 860 AT 850-920 HAMPSHIRE RD, WESTLAKE VILLAGE, CA

 WESTCORD



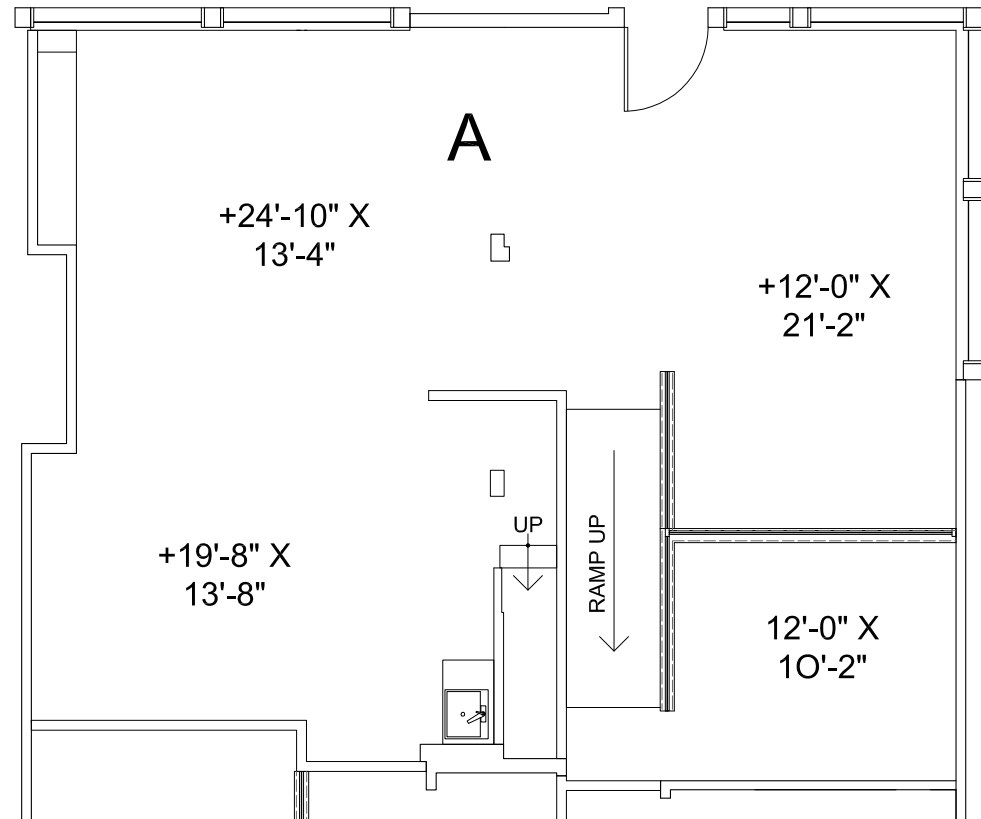
AVAILABILITY

SUITE: 860A
SIZE: ±1,431 RSF
RATE: \$2.25 MG
STATUS: VACANT
TERM: SUBLEASE RUNS
THROUGH 05/31/2027

- CREATIVE OPEN LAYOUT
- HIGH END FINISHES
- HIGH CEILINGS

FLOOR PLAN

SUITE 860A
±1,431 RSF







DISCOVER THE WATERCOURT AT WESTLAKE VILLAGE: YOUR OASIS OF PRODUCTIVITY AND SERENITY

Welcome to The Watercourt at Westlake Village, where business meets tranquility in perfect harmony. Nestled in the heart of Westlake Village, this pristine office complex offers a unique blend of professional sophistication and serene natural beauty.

A Serene Oasis of Productivity

At The Watercourt, we believe that a peaceful environment enhances productivity and fosters creativity. Our beautifully landscaped grounds are adorned with captivating water features throughout, creating a soothing backdrop for your daily work routine. Experience a truly tranquil workspace that is unlike any other.

Direct Access to Your Suite

Enjoy the convenience of direct access to your suite at The Watercourt. No long hallways or crowded elevators – just a seamless transition from the vibrant outdoor surroundings to your private workspace. This ease of access allows you to make the most of your valuable time and energy.



Office suites available between 500 - 5,000 rentable square feet



A tranquil office complex in the heart of Westlake Village featuring lush landscaping and beautiful water features



Onsite amenities include two restaurants, multiple fitness facilities, and hair salon



On-site property management



High speed internet provided by Verizon Fios and Time Warner



Free covered and surface parking



Complimentary shared conference room



THE WATER COURT SUBLEASE

Jeremy Principe

Vice President
DRE #02131156
M (805) 390-5267
T (805) 497-4557
jeremy@westcord.com

Brendan Pagani

Vice President
DRE #02095300
M (949) 887-9814
T (805) 497-4557
brendan@westcord.com

Connor Ahl

Associate
DRE #02242791
M (805) 551-0156
T (805) 497-4557
connor@westcord.com



WESTCORD.COM

This information has been furnished from sources which we deem reliable, but for which we assume no liability. The information contained herein is given, in confidence, with the understanding that all negotiations pertaining to this property be handled through the submitting office. All measurements are approximate.

