



4202 EAST ELWOOD STREET

PHOENIX, ARIZONA 85040

7,367 Square Feet Available, Suite 9

\$1.28 PSF, Modified Gross

Available for Occupancy August 1, 2026

16' Clear Height

One Grade Level Door

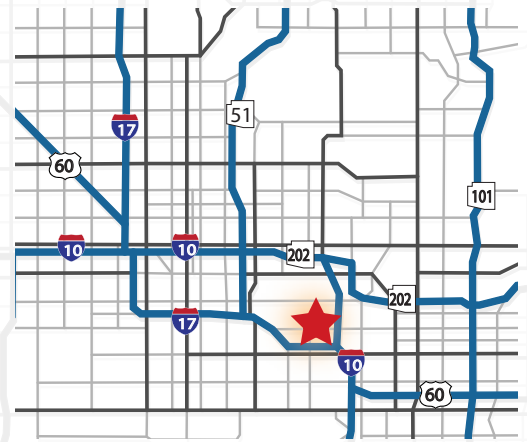
One Truckwell

Master Lease Expires January 2028

3 Phase Power

Fire Sprinklered

A-1 Zoning, City of Phoenix



Chad Neppi

Senior Vice President
602.695.4909
cneppi@citywidecre.com

Vince Utucu

Sales & Leasing
773.807.6674
vince@citywidecre.com

2122 East Highland Avenue, Suite 225 • Phoenix, Arizona 85016 • 602.313.1000 • citywidecre.com



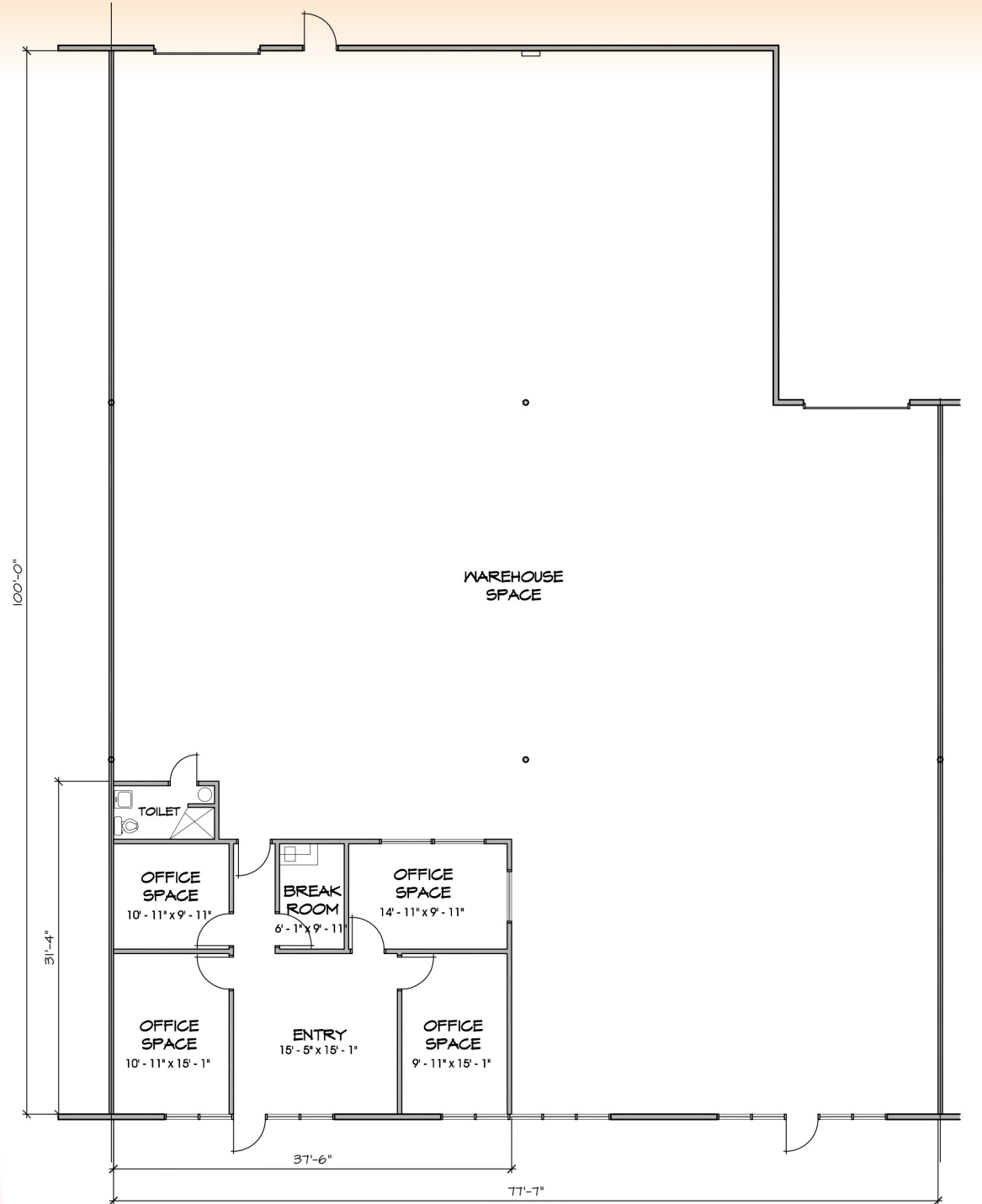
Chad Neppi

Senior Vice President
602.695.4909
cneppi@citywidecre.com

Vince Utucu

Sales & Leasing
773.807.6674
vince@citywidecre.com

2122 East Highland Avenue, Suite 225 • Phoenix, Arizona 85016 • 602.313.1000 • citywidecre.com



Chad Neppi

Senior Vice President
602.695.4909
cneppi@citywidecre.com

Vince Utucu

Sales & Leasing
773.807.6674
vince@citywidecre.com

2122 East Highland Avenue, Suite 225 • Phoenix, Arizona 85016 • 602.313.1000 • citywidecre.com