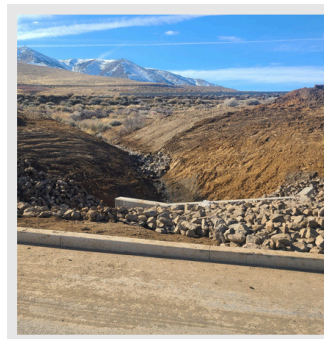




00 STEAD BLVD RENO, NV 89506

SIZE: 4.94 Acres
PROPERTY TYPE: Industrial / Flex
TERM: Negotiable
AVAILABLE: Now | 6/3/2026

- High visibility
- Potentially rail served – major logistic advantage
- Direct on/off ramp access to hwy 395
- Solar-based security and lighting on-site
- Flexible lease term 10 minutes from downtown Reno
- 2 minutes from Stead High School & nearby retail/services
- Exclusive use of the site – single tenancy



Located at the intersection of Stead Boulevard and North Virginia Street, right at the Highway 395 on/off ramp – one of Reno's most accessible industrial corridors. Excellent regional connectivity with proximity to downtown Reno, retail amenities, and potential rail service.