



For Sale
1,123 SF | \$425,000
Office Condo



Suite 301 | 208 Charlotte Highway

Asheville, North Carolina 28803

Property Overview

Rare opportunity to own a private, recently constructed modern office suite at 208 Charlotte Highway, Suite 301. Located on the third floor and serviced by an elevator, this thoughtfully designed space features a conference room, multiple private offices, reception area, storage, kitchen area, and year-round views. The property offers excellent accessibility just minutes from downtown Asheville, the Blue Ridge Parkway, I-40, and directly along US-74A. Co-tenants include a surgical center and specialty veterinary clinic, creating a professional setting ideal for medical, wellness, administrative, or general office use. A rare Asheville-area ownership opportunity in a convenient, high-visibility location.

Offering Summary

Sale Price:	\$425,000
Building Size:	1,123 SF
Zoning:	NSD
Traffic Count:	23,540

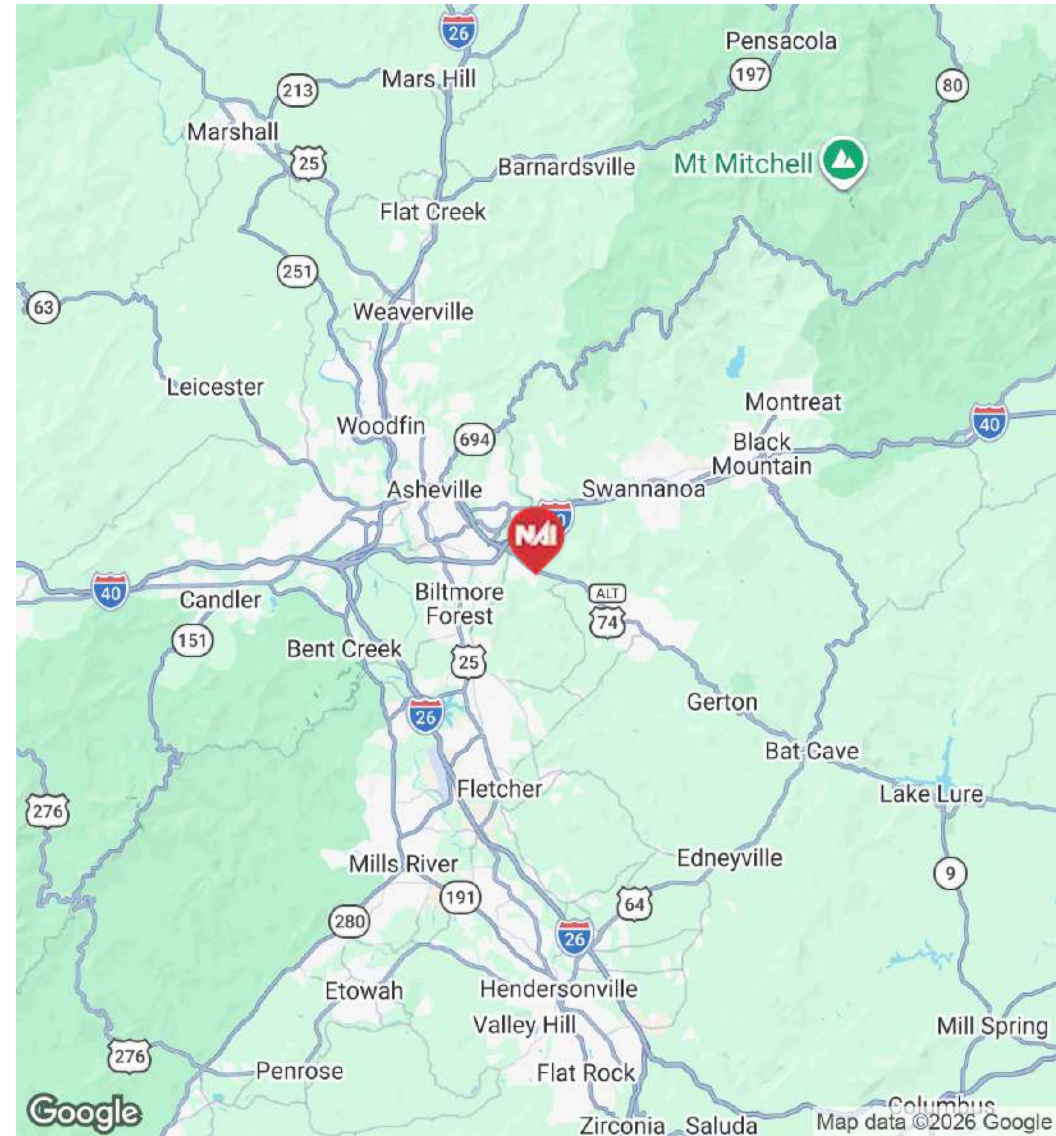
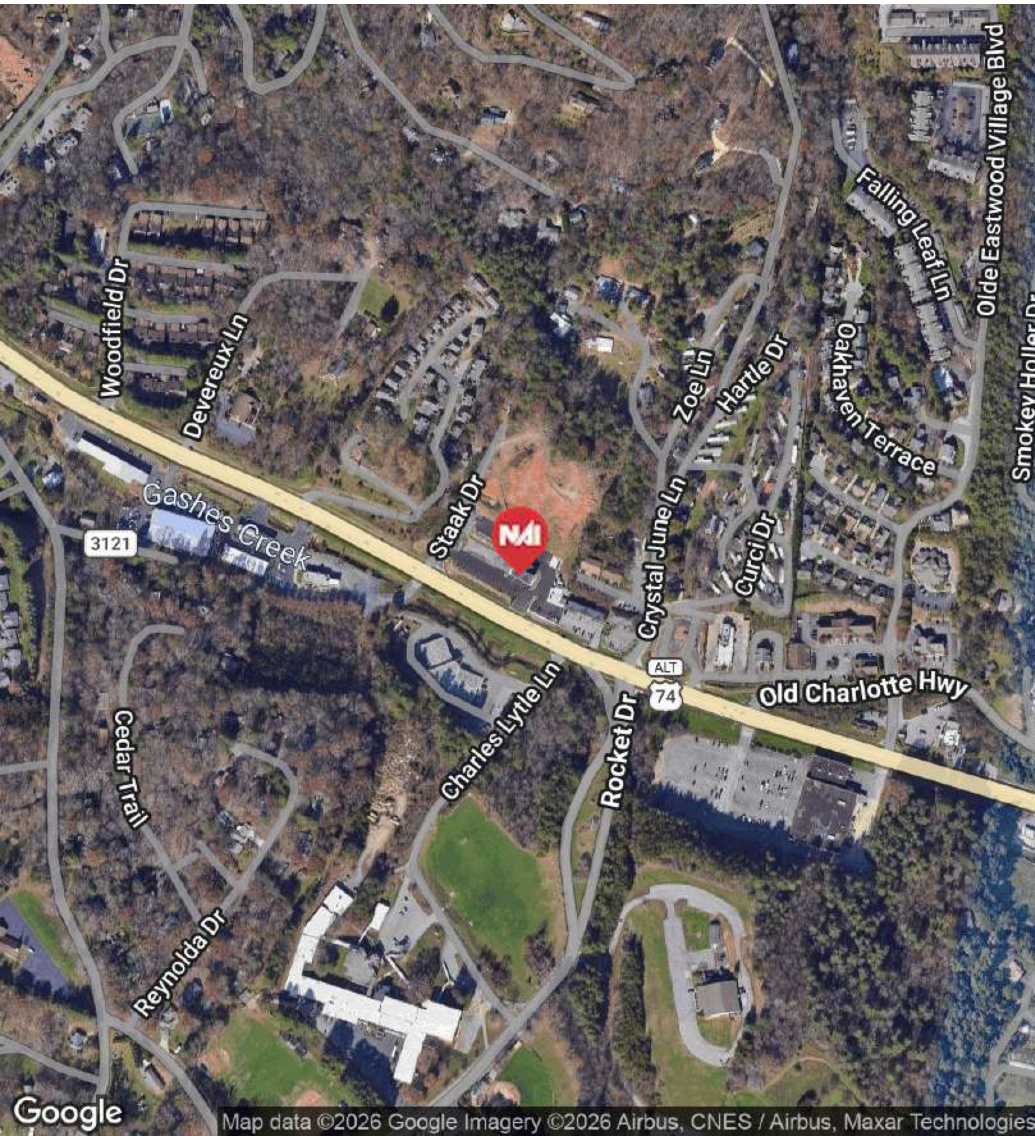
For More Information

Jim Davis, SIOR

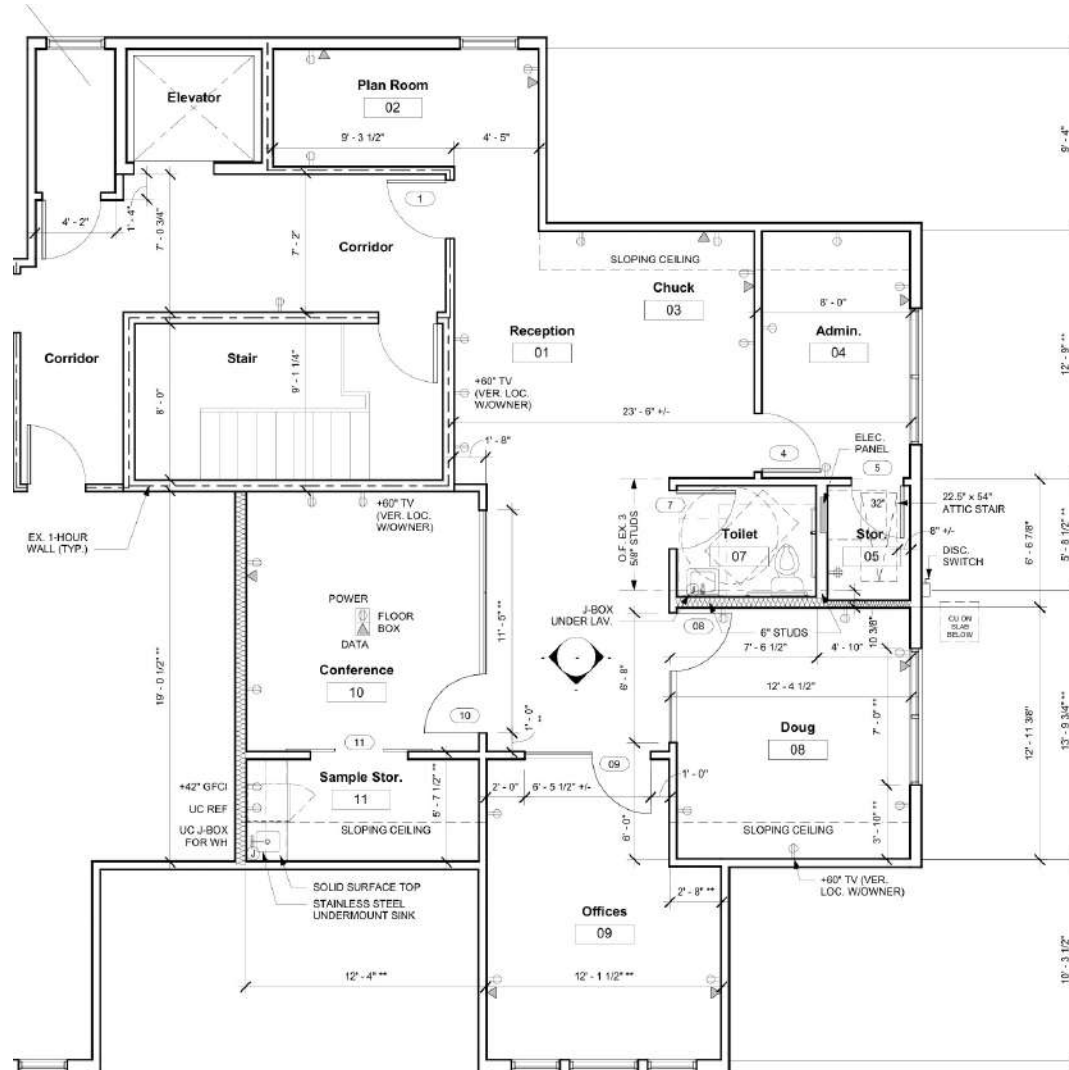
O: 330 718 3311

jdavis@naibeverly-hanks.com | NC #292479

For Sale
1,123 SF | \$425,000
Office Condo

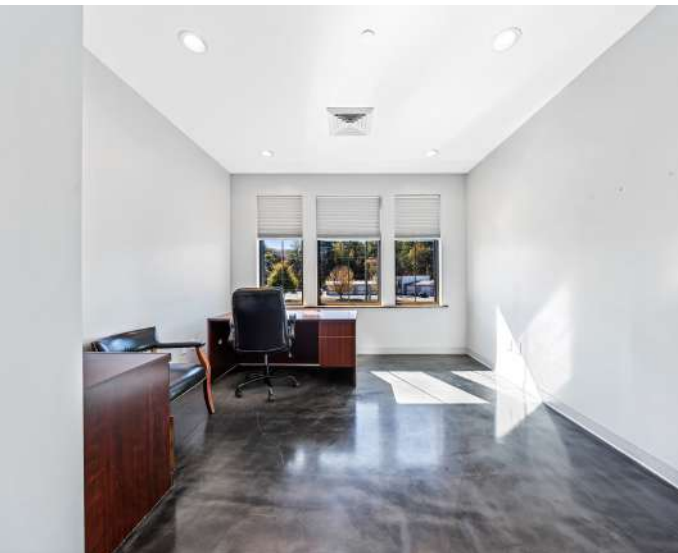


BROCHURE | 208 Charlotte Highway Asheville, NC 28803



Exterior Photos
1,123 SF | \$425,000
Office Condo





For Sale
1,123 SF | \$425,000
Office Space

Population	0.25 Miles	0.5 Miles	1 Mile
Total Population	113	448	1,756
Average Age	41.8	42.0	42.4
Average Age (Male)	41.6	41.8	42.3
Average Age (Female)	41.0	41.0	41.3
Households & Income	0.25 Miles	0.5 Miles	1 Mile
Total Households	41	162	644
# of Persons per HH	2.8	2.8	2.7
Average HH Income	\$106,384	\$108,014	\$108,457
Average House Value	\$454,980	\$450,264	\$444,575

2023 American Community Survey (ACS)

