

WHITLOCK OFFICES



FOR LEASE

PROPERTY DETAILS

2511 S. West Temple, South Salt Lake, UT 84115

- Two-Story Building with 9,211 SF Available
 - » First Floor: 2,224 RSF
 - » Second Floor: 6,987 RSF
- \$16.00 PSF Full-Service
- Possible Uses Include: Office, Medical Office, Retail, & Light Industrial
- Ample Parking Included On-Site
- Neighboring Tenants Include Intermountain Health
- Nearby Amenities Include Level Crossing Brewery and Bonwood Bowl
- Recently Completed Renovations, Ready for Improvements
- Quick Access to I-80
- Zoning: TOD
- Water Tower Plaza, part of the South Salt Lake Public Works Campus Project, set to be completed 2/2027 will be adjacent to Whitlock Offices. Current plans include a facelift to the water tower, community plaza, outdoor concert stage, and a public art mural.



LUCAS AOKI

South Salt Lake Arts Mural Fest 2026



ANDY MOFFITT
amoffitt@newmarkmw.com
direct 801.456.8811
[View Profile](#)

SKYE GALLEY
sgalley@newmarkmw.com
direct 801.971.3602
[View Profile](#)

**FULL SERVICE
COMMERCIAL REAL ESTATE**
312 East South Temple
Salt Lake City, Utah 84111
Office 801.456.8800
www.newmarkmw.com

WHITLOCK OFFICES

SITE PLAN



NEWMARK
MOUNTAIN WEST

ANDY MOFFITT
amoffitt@newmarkmw.com
direct 801.456.8811
[View Profile](#)

SKYE GALLEY
sgalley@newmarkmw.com
direct 801.971.3602
[View Profile](#)

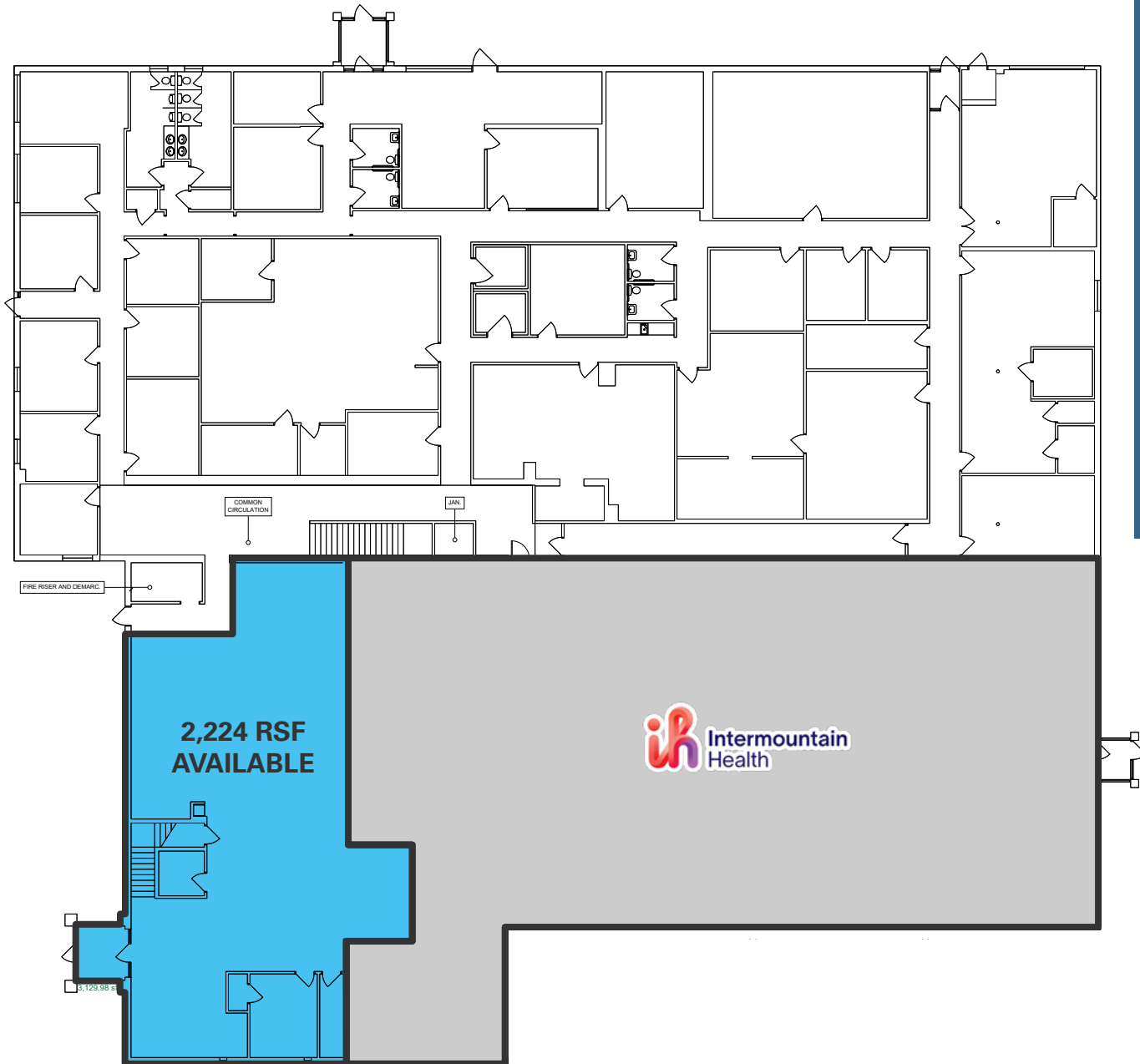
**FULL SERVICE
COMMERCIAL REAL ESTATE**
312 East South Temple
Salt Lake City, Utah 84111
Office 801.456.8800
www.newmarkmw.com

This statement with the information it contains is given with the understanding that all negotiations relating to the purchase, renting or leasing of the property described above shall be conducted through this office. The above information while not guaranteed has been secured from sources we believe to be reliable.

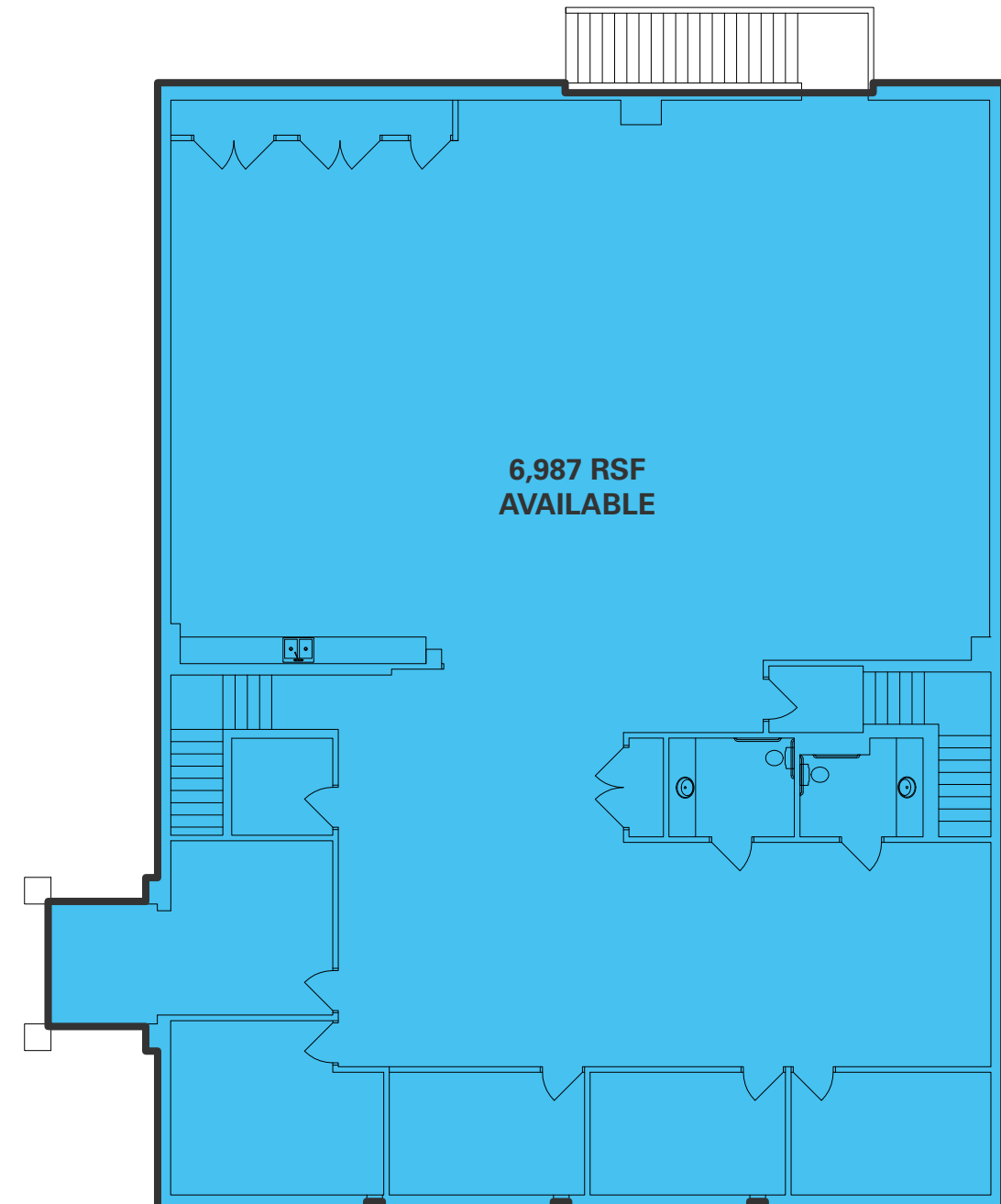
WHITLOCK OFFICES

WHITLOCK OFFICES

SITE PLAN

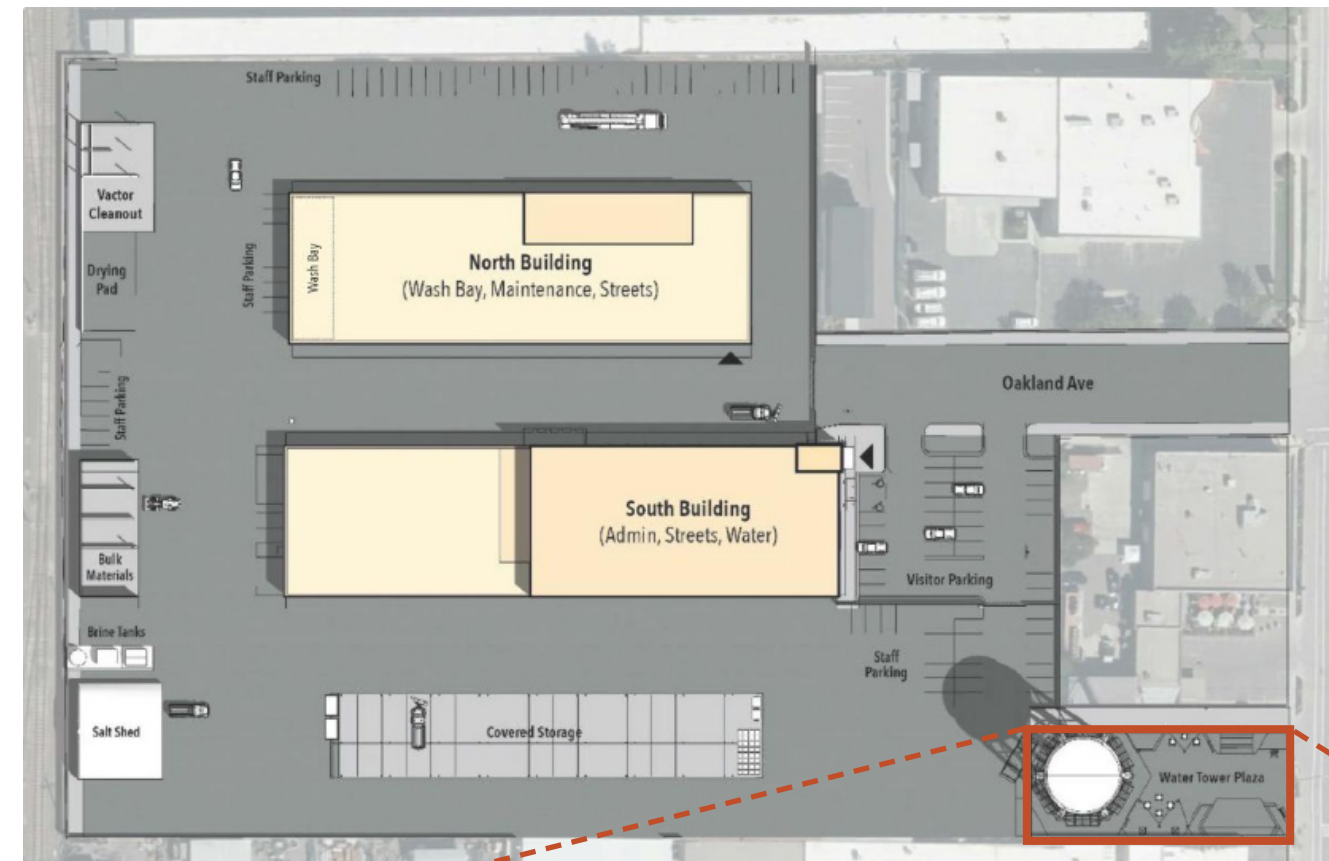
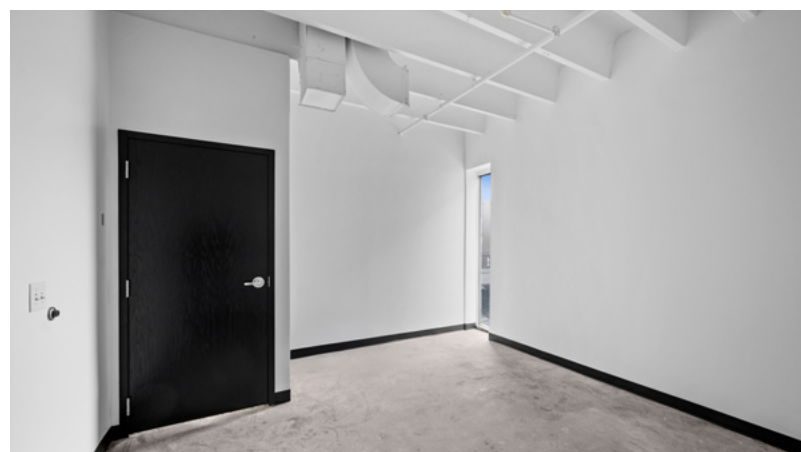
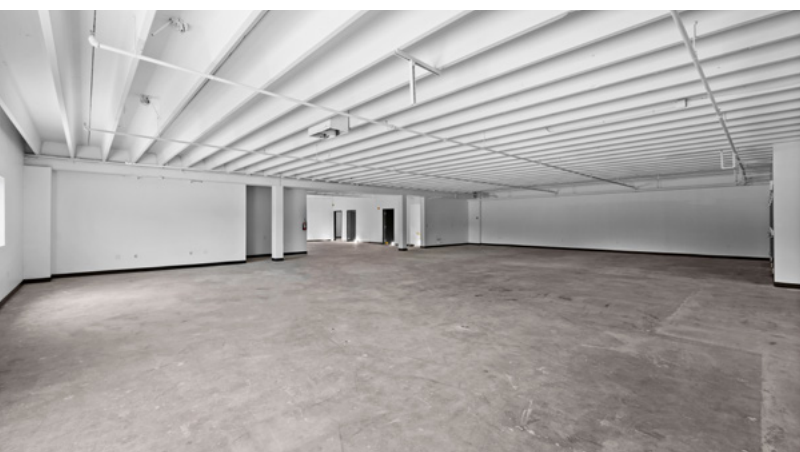
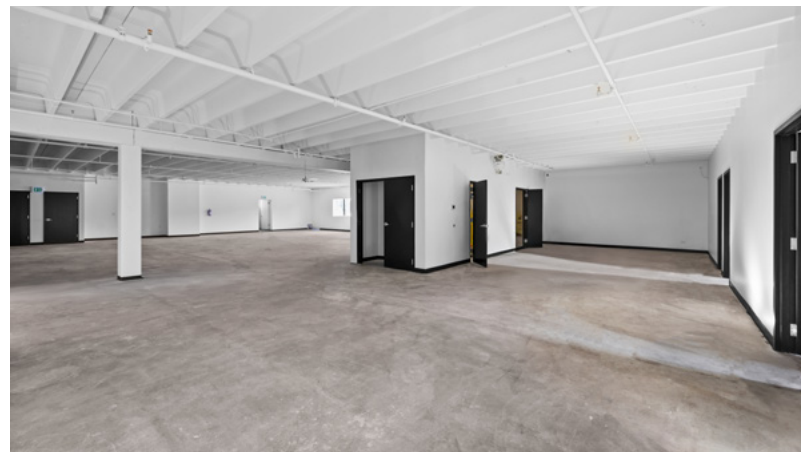
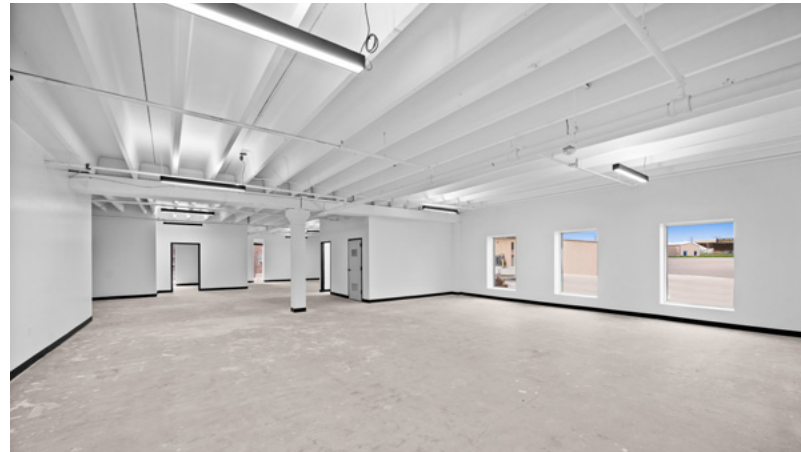


LEVEL 2 FLOOR PLAN

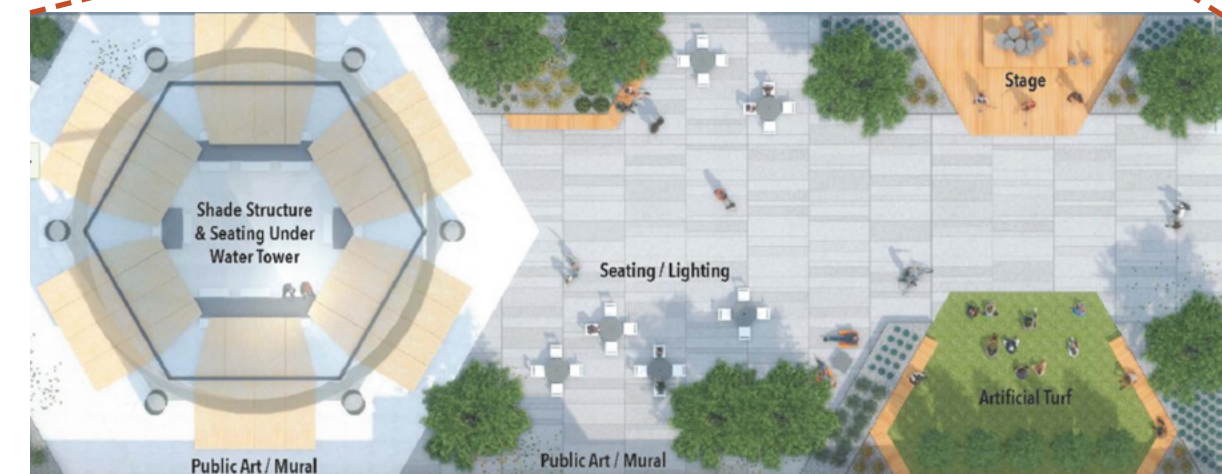


WATER TOWER PLAZA

RENDERINGS



Whitlock Offices



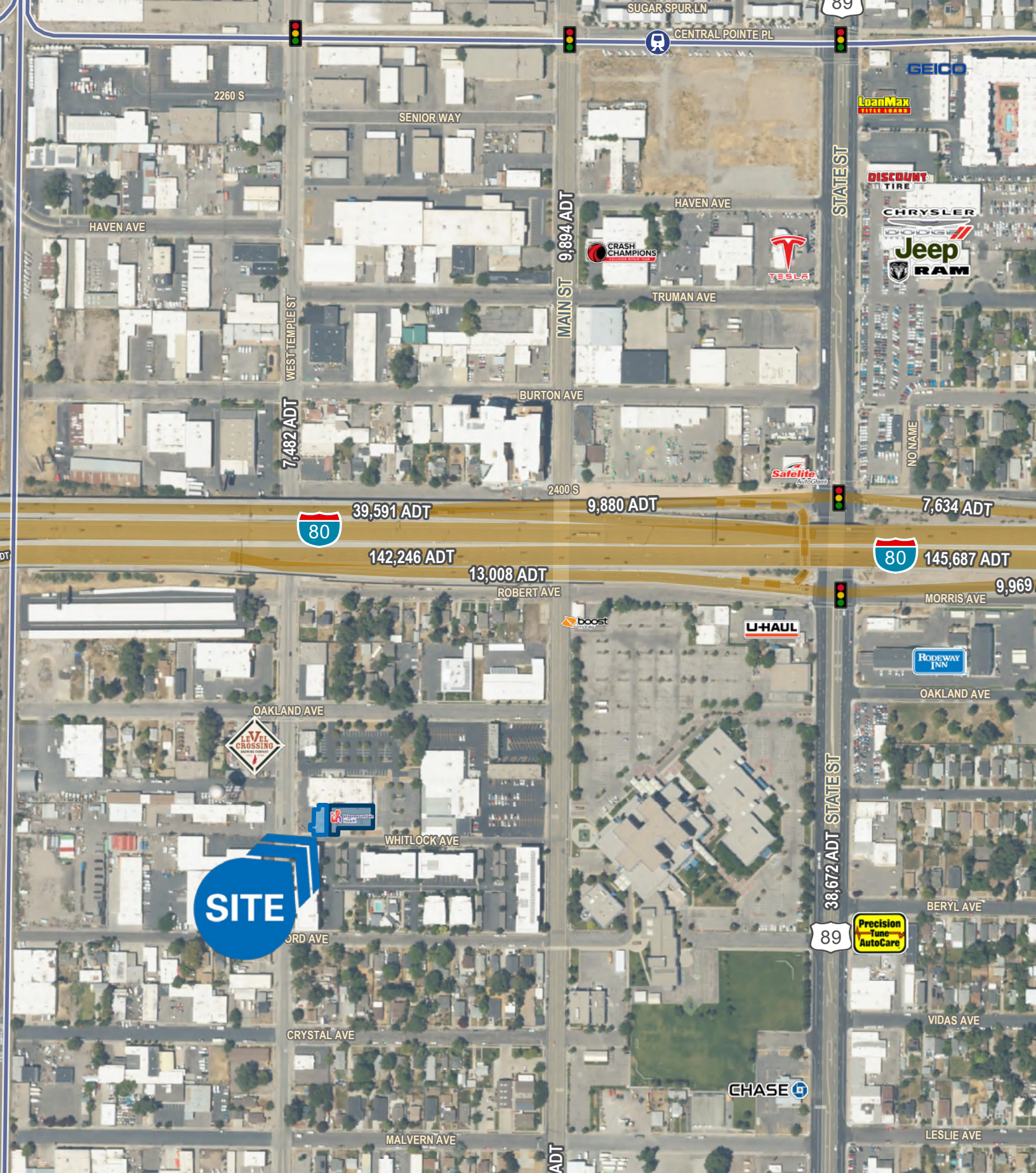
- Expected to be completed February 2027
- Adjacent to Whitlock Offices
- Part of the South Salt Lake Public Works Campus Project
- More about the project: [Click Here](#)

NEWMARK
MOUNTAIN WEST

ANDY MOFFITT
amoffitt@newmarkmw.com
direct 801.456.8811
[View Profile](#)

SKYE GALLEY
sgalley@newmarkmw.com
direct 801.971.3602
[View Profile](#)

**FULL SERVICE
COMMERCIAL REAL ESTATE**
312 East South Temple
Salt Lake City, Utah 84111
Office 801.456.8800
www.newmarkmw.com



ANDY MOFFITT
 amoffitt@newmarkmw.com
 direct 801.456.8811
[View Profile](#)

SKYE GALLEY
 sgalley@newmarkmw.com
 direct 801.971.3602
[View Profile](#)

**FULL SERVICE
 COMMERCIAL REAL ESTATE**
 312 East South Temple
 Salt Lake City, Utah 84111
 Office 801.456.8800
www.newmarkmw.com