



69 Copeland Street

Jacksonville, Florida 32204

Property Highlights

- ±6,500 SF industrial facility with ±2,240 SF office
- Fresh renovations plus new roof completed in 2025
- Fully conditioned warehouse with 12'3" clear height
- Two drive-in doors: 6' x 10' and 10' x 10'
- 400 Amp, 3-phase, 240V electrical service
- IL zoning with 1.0/1,000 SF parking ratio

Property Overview

NAI Hallmark is pleased to offer this move-in ready industrial facility located in Jacksonville's established urban industrial corridor. Recently renovated and featuring a new 2025 roof, the property offers a rare combination of conditioned warehouse space, substantial office build-out, and heavy power capacity. With two grade-level loading doors, IL zoning, and excellent access to Jacksonville's transportation network, the property is ideally suited for manufacturing, fabrication, distribution, showroom, or flex industrial users seeking a functional and well-maintained facility.

Offering Summary

Lease Rate:	\$10 SF/yr (NNN)
Available SF:	6,500 SF
Lot Size:	0.25 Acres
Zoning:	IL
Power:	400 Amp, 3-phase, 240V
Drive-in Doors:	6' x 10' and 10' x 10'
Ceiling Height:	12'3" clear height in warehouse

For More Information



Jason J. Purdy

Vice President, Industrial Specialist
O: 904 404 4462 | C: 850 287 2697
jpo@naihallmark.com



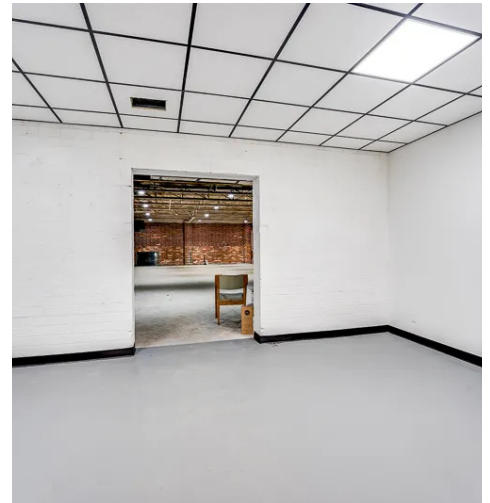
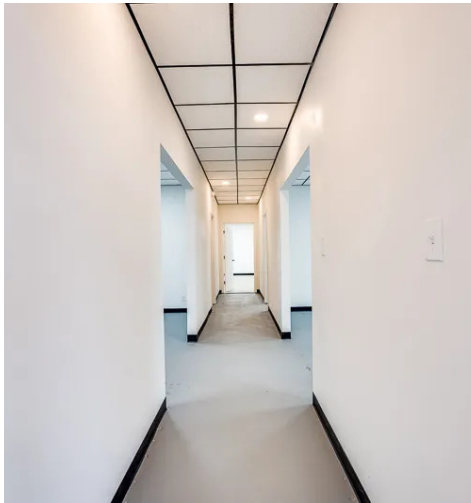
Camden Padgett

Associate Vice President
O: 904 404 4460
cp@naihallmark.com

For Lease
6,500 SF | \$10 SF/yr
Industrial Space



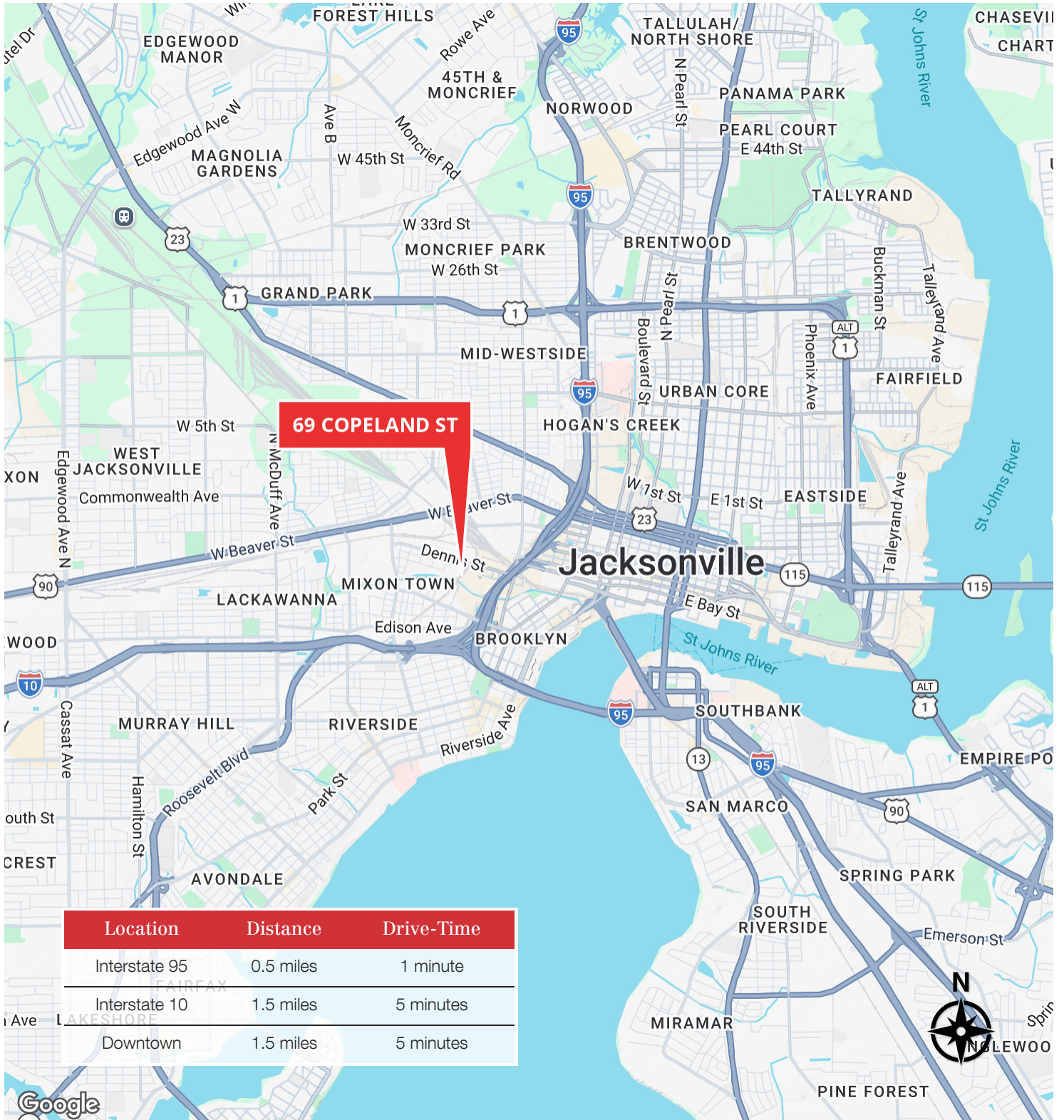
For Lease
6,500 SF | \$10 SF/yr
Industrial Space



For Lease
6,500 SF | \$10 SF/yr
Industrial Space



For Lease
6,500 SF | \$10 SF/yr
Industrial Space



No warranty or representation, express or implied, is made as to the accuracy of the information contained herein, and the same is submitted subject to errors, omissions, change of price, rental or other conditions, prior sale, lease or financing, or withdrawal without notice, and of any special listing conditions imposed by our principals no warranties or representations are made as to the condition of the property or any hazards contained therein are any to be implied.