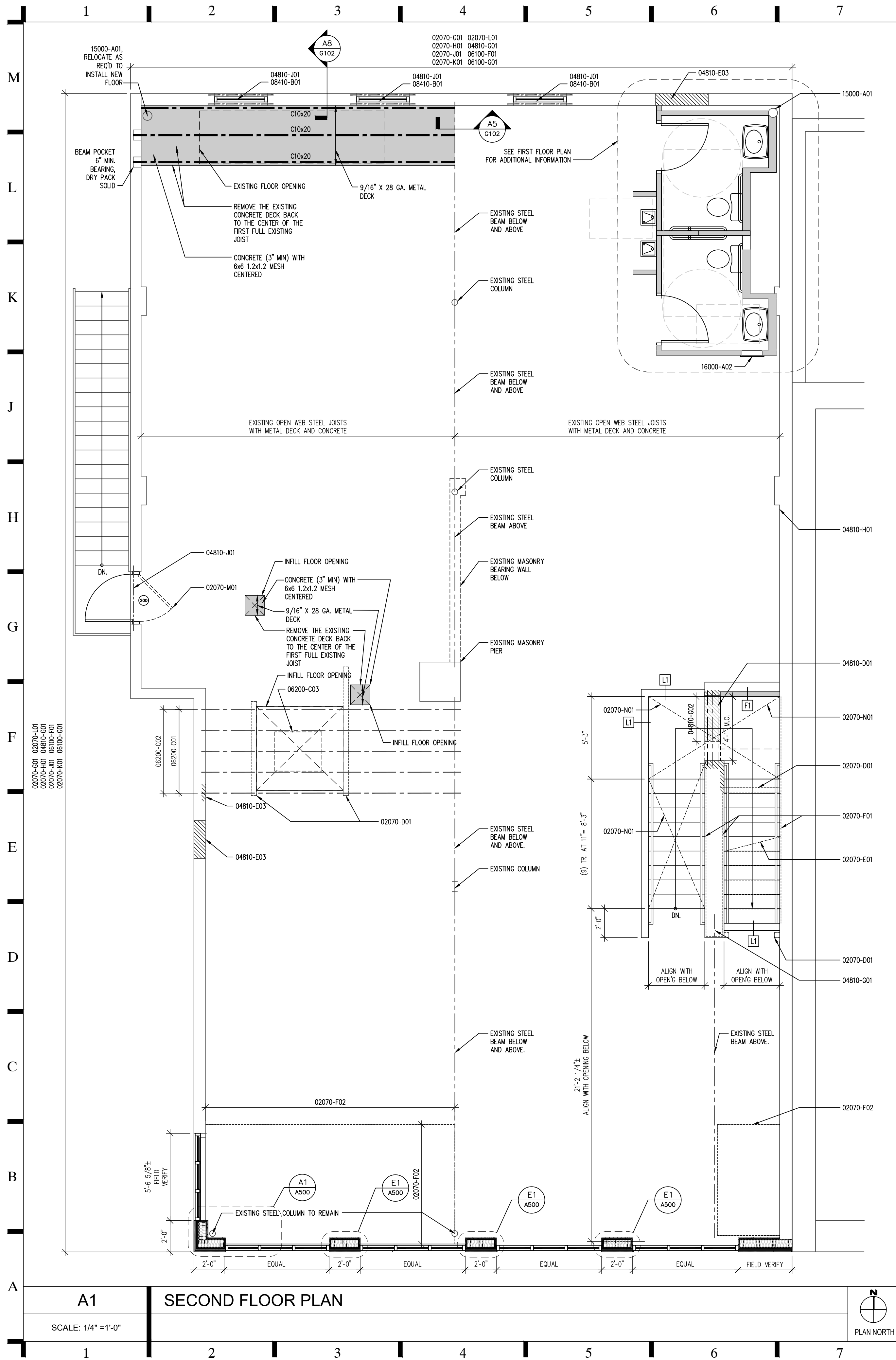


THIS DOCUMENT, AND THE IDEAS AND DESIGNS INCORPORATED HEREIN, AS AN INSTRUMENT OF PROFESSIONAL SERVICE, IS THE PROPERTY OF PCA ARCHITECTURE, P.S.C. AND IS NOT TO BE USED, IN WHOLE OR IN PART, FOR ANY OTHER PROJECT, WITHOUT THE WRITTEN AUTHORIZATION OF PCA ARCHITECTURE, P.S.C. ALL RIGHTS RESERVED.



CONSTRUCTION NOTES 00000-000
SEE DRAWING NO. G100 FOR SPECIFIC CONSTRUCTION NOTES

Planning & Development Services
of Kenton County
Building Plan Review
Approved with Conditions
Brian Sims 01/29/2021

PERMIT AND CONSTRUCTION 2020.06.22

**SHELL
MODIFICATIONS**
TO
106 EAST 4TH STREET
COVINGTON, KY 41001

**SECOND FLOOR PLAN,
WALL TYPES, SCHEDULES**

2019-085.0



A101

WALL TYPES

E1
Infill above door opening with 2" Dryvit Outsulation Plus MD System over adhesive/drainage medium over 5/8" Exterior gypsum sheathing with continuous Backstop NT Air/Water-Resistive Barrier over 3/4" plywood sheathing over 2x6 wood framing at 16" o.c. Secure to masonry at head and jambs. Infill stud cavities with R-19 batt insulation. Install 5/8" gypsum board on interior side. Caulk intersection of wall infill and existing masonry.

F1
5/8" Type "X" gypsum board over 2x wood framing at 16" o.c. Size of wood framing as required to align with wall below.

F2
5/8" Type "X" gypsum board over 2x4 wood framing at 16" o.c.
NOTE: Install partition after installation of all fire-rated partitions.

G1
5/8" Type "X" gypsum board, each side, over 2x4 wood framing at 16" o.c. Insulate with 3" sound attenuation insulation. Provide pressure treated sill plate. Extend entire partition assembly to underside of floor sheathing above.
Non-Bearing Wall
Fire Rating: (1) hour per U305

G2
5/8" Type "X" gypsum board, each side, over 2x6 wood framing at 16" o.c. Insulate with 3" sound attenuation insulation. Provide double top plate at top of wall. Provide pressure treated sill plate. Extend entire partition assembly to underside of floor sheathing above.
Bearing Wall
Fire Rating: (1) hour per U305

L1
5/8" Type "X" gypsum board, each side, over 2x6 wood framing at 16" o.c. Extend entire partition to 3'-6" above finish floor. Cap with wood trim
Fire Rating: None

FIRE RATED CEILING ASSEMBLIES
C1
5/8" Type "X" gypsum board over 2-1/2" I-Studs at 24" o.c. and 1" Type "X" shaftwall liner panels
Fire Rating: 1-Hour similar to WH694-0300.1

DOOR, FRAME, AND HARDWARE SCHEDULE

DOOR NO. 100
DOOR SIZE: 3'-0" X 7'-0"
DOOR TYPE: Aluminum with 1" low-e, insulated glass
FRAME TYPE: Aluminum - Thermally broken
DOOR FINISH: Finish as selected by the Owner.
FRAME FINISH: Finish as selected by the Owner.
HARDWARE: Hinges, Closer, ADA operator with interior and exterior buttons, Entrance lockset, Threshold, Weatherstripping, Electric strike release - coordinate location of push-button with Owner.

DOOR NO. 101A
DOOR SIZE: 3'-0" X 7'-0"
DOOR TYPE: Aluminum with 1" low-e, insulated glass
FRAME TYPE: Aluminum - Thermally broken
DOOR FINISH: Finish as selected by the Owner.
FRAME FINISH: Finish as selected by the Owner.
HARDWARE: Hinges, Closer, ADA operator with interior and exterior buttons, Entrance lockset, Threshold, Weatherstripping, Electric strike release - coordinate location of push-button with Owner.

DOOR NO. 101B
DOOR SIZE: (1) 3'-0" X 7'-0" and (1) 2'-0" +/- x 7'-0" - Field verify width.
DOOR TYPE: Hollow metal - Galvanized and insulated.
FRAME TYPE: Hollow metal - grout solid
DOOR FINISH: Primed and painted
FRAME FINISH: Primed and painted
HARDWARE: Hinges, Closers, Top and bottom deadbolt on in-active leaf, Entrance lockset, Drip cap, Threshold, Weatherstripping.

DOOR NO. 200
DOOR SIZE: 3'-0" +/- X 7'-0" + Transom
DOOR TYPE: Hollow metal - Galvanized and insulated.
FRAME TYPE: Hollow metal - grout solid
DOOR FINISH: Primed and painted
FRAME FINISH: Primed and painted
HARDWARE: Hinges with non-removable pins, Closer, Entrance lockset, Threshold and weather-stripping
NOTES:
1. Field verify existing masonry opening. Adjust transom size as required.
2. Grout frame solid.
3. Transom glass shall be insulated and low-e.
4. Adjust door size to accommodate existing masonry opening - minimum size = 2'-10".

A8 WALL TYPES, DOOR, FRAME AND HARDWARE SCHEDULE

A1 SECOND FLOOR PLAN

SCALE: 1/4" = 1'-0"

