

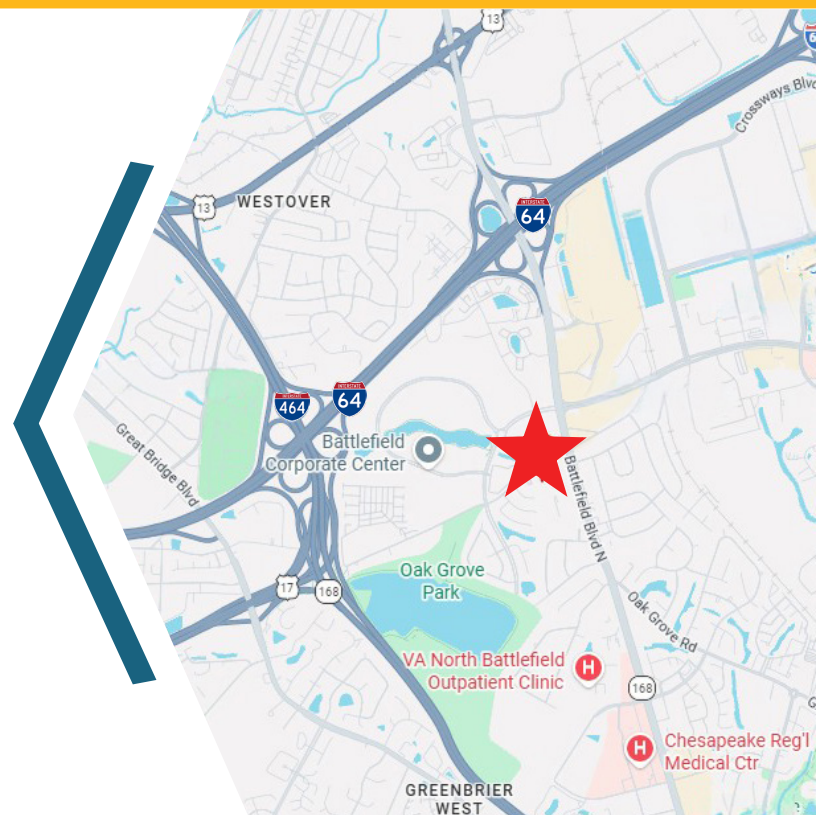
OFFICE SPACE FOR LEASE

1104 Madison Plaza, Suite 201
Chesapeake, VA 23320



ABOUT PROPERTY

- 1,524 SF
- Zoned B-1 (Neighborhood Business District)
- Move-In Ready
- Second Floor Suite - 5 Private offices, Reception, Conference Room, Breakroom and ADA Restroom
- Located in the heart of Greenbrier, Chesapeake's primary business corridor with major retail, dining and healthcare nearby, minutes from I-64
- Lease Rate: \$16.50 PSF, net utilities, janitorial and telecommunications

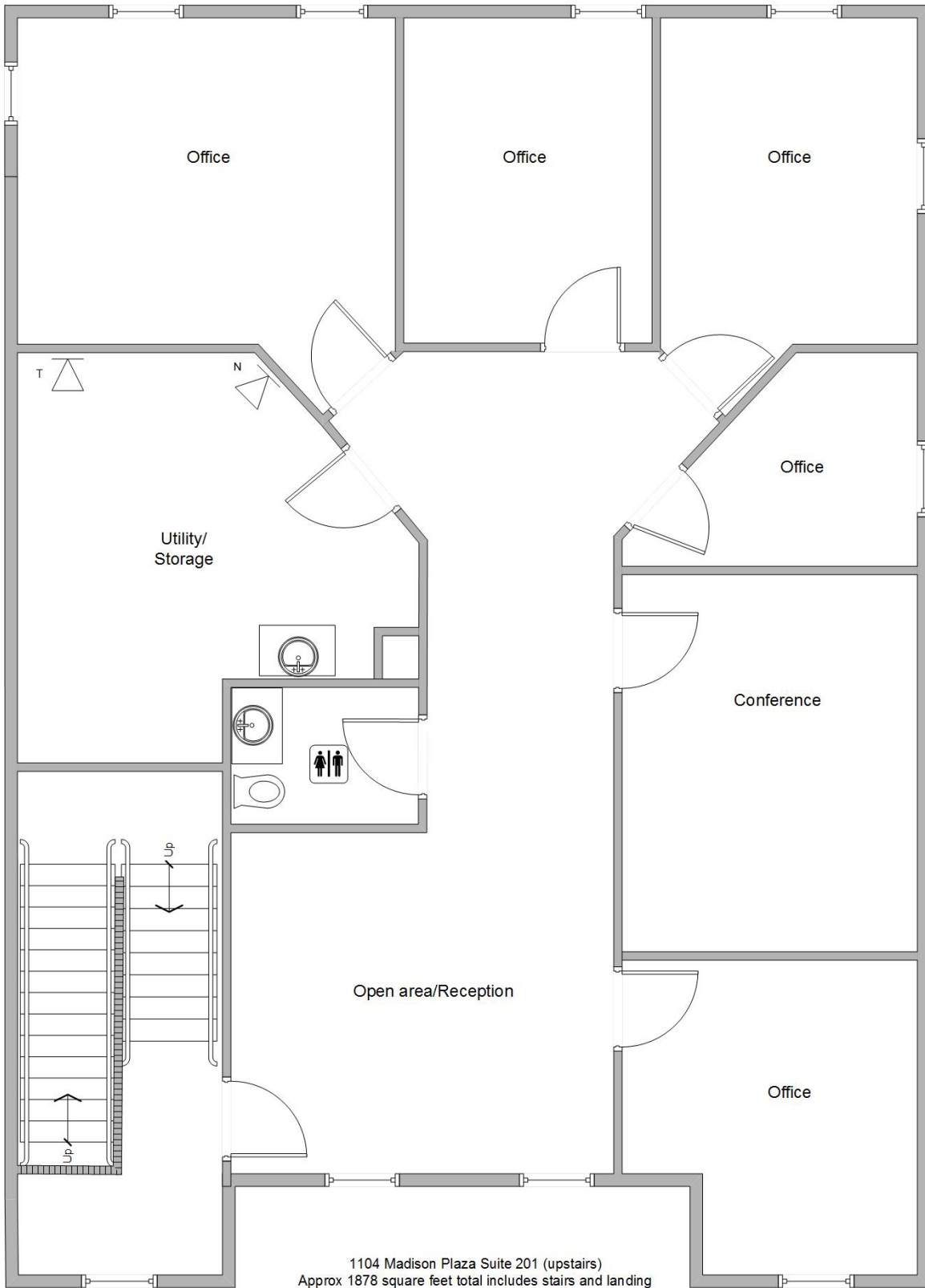


For more information:
A'DAYE BROWN
757.640.8249
ADayeBrown@HarveyLindsay.com

999 Waterside Drive • Suite 1400
Norfolk, Virginia 23510
757-640-8700

HARVEY LINDSAY
COMMERCIAL REAL ESTATE

www.HarveyLindsay.com





PROPERTY

Summit Pointe

FIRST WATCH
neat bird
CORK BOLL
IHOP
Integrated Financial Partners

Volvo Parkway SC

MASSAGE LUXE
Landley Federal Credit Union
WING STONE
SWEET FROGS
NOTHING BUT CAKES
GOURMET
Yama Sushi

Greenbrier Mall

Bath & Body Works
CHAMPS SPORTS
Dillard's
YANKEE CANDLE
H&M
Foot Locker
macy's
Rainbow
Victoria's Secret
K.A.Y.

Greenbrier MarketCenter

BARNES & NOBLE
HOBBY LOBBY
BEST BUY
Marshall's
OLD NAVY
TOWNE BANK
Cine's
Walgreens
WELLS FARGO

**BM WILLIAMS
PRIMARY SCHOOL**

**PARISER
DERMATOLOGY
SPECIALISTS**

Oak Grove Park

Chesapeake City Park

**CHESAPEAKE REGIONAL
HEALTHCARE**

**Freddy's
HARBOR FREIGHT**

Patient First

**BayPort
Roses**

McDonald's

IHOP

HONDA

DEMOGRAPHICS

1104 Madison Plz, Suite 201
Chesapeake, VA | 23320



KEY FACTS WITHIN 1 MILES

 **8,648**
POPULATION

37.5 MEDIAN
AGE

 **2.28**
AVG.
HOUSEHOLD
SIZE

\$96,971
Average Household
Income

 **711**
TOTAL BUSINESSES

 **12,521**
TOTAL EMPLOYEES

KEY FACTS WITHIN 3 MILES

 **74,100**
POPULATION

39.0 MEDIAN
AGE

 **2.38**
AVG.
HOUSEHOLD
SIZE

\$102,231
Average Household
Income

 **3,775**
TOTAL BUSINESSES

 **58,243**
TOTAL EMPLOYEES

KEY FACTS WITHIN 5 MILES

 **213,174**
POPULATION

38.4 MEDIAN
AGE

 **2.55**
AVG.
HOUSEHOLD
SIZE

\$110,105
Average Household
Income

 **6,954**
TOTAL BUSINESSES

 **95,446**
TOTAL EMPLOYEES

DEMOGRAPHICS (2025) source: ESRI

For more information:
A'DAYE BROWN
757.640.8249
ADayeBrown@HarveyLindsay.com

999 Waterside Drive • Suite 1400
Norfolk, Virginia 23510
757-640-8700

HARVEY LINDSAY
COMMERCIAL REAL ESTATE

www.HarveyLindsay.com