

# 325 West 1700 South

Clearfield, UT 84015

10,890 Sq. Ft. Warehouse on 0.68 Acres For Sale or Lease

## Property Features

- + Available: 10,890 Sq. Ft. on 0.68 Acres
- + APN: 12-809-0002
- + Loading: 8 Drive in Doors
- + Power: 600 Amp, 240 Volt, 3 Phase
- + Clear Height: 14'
- + Year Built: 1997
- + Construction: Masonry Block
- + Zoning: C-2, Commercial
- + Located 0.5 Miles to I-15 On/Off Ramp
- + 0.8 Miles to Clearfield Trax Station



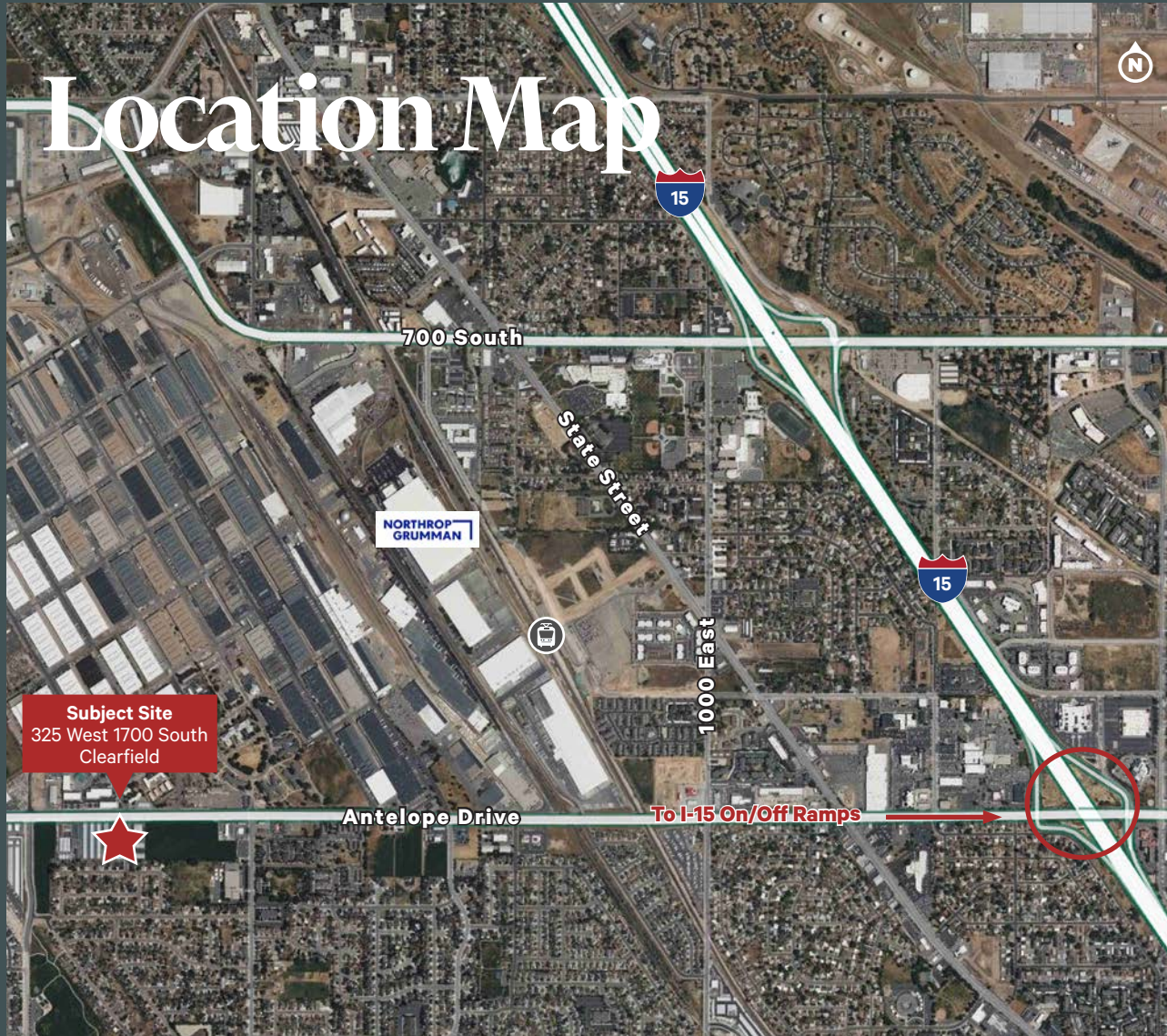
## Contact Us

**Jeff Richards**  
Executive Vice President  
+1 801 869 8026  
jeff.richards@cbre.com

**Chris Liddell**  
Senior Vice President  
+1 801 869 8007  
chris.liddell@cbre.com

**Tom Dischmann**  
Executive Vice President  
+1 801 243 9411  
tom.dischmann@cbre.com

**Matt McAfee**  
Senior Vice President  
+1 801 869 8023  
matt.mcafee@cbre.com



© 2025 CBRE, Inc. All rights reserved. This information has been obtained from sources believed reliable but has not been verified for accuracy or completeness. CBRE, Inc. makes no guarantee, representation or warranty and accepts no responsibility or liability as to the accuracy, completeness, or reliability of the information contained herein. You should conduct a careful, independent investigation of the property and verify all information. Any reliance on this information is solely at your own risk.