

# RICE LAKE PLAZA

## Space Available Maple Grove, MN

Weaver Lake Road & 83rd Way | Maple Grove, MN



### Available For Lease

- 1,126 SF Retail Space
- 520 SF Office Space
- 1,024 SF Office Space

- Negotiable Rates •
- TI's Available •
- Close proximity to Arbor Lakes, a major retail and entertainment area •
- High-traffic corridors and strong co-tenancy with national and regional brands •

Rice Lake Plaza offers an exceptional opportunity to lease space in a highly desirable and established area of Maple Grove. Ideally situated just off Weaver Lake Road, this well-positioned mixed-use development features a dynamic blend of street-level retail storefronts and professional second-floor office suites.

With 41,934 square feet of total space, Rice Lake Plaza is perfectly suited for retail, office, and medical office users seeking strong visibility, easy accessibility, and a thriving community atmosphere.

**Tour Today!**

### Demographics

	1 - Mile	3 - Miles	5 - Miles
Population	8,043	58,589	157,129
Daytime Population	6,328	41,080	80,480
Households	3,429	23,267	58,401
Average HH Income	\$144,192	\$157,172	\$156,872

DATA SOURCE: STDB | ESRI

### Leasing Info

**Brian Merz**  
(763) 285-7235  
bmerz@hjdevelopment.com  
hjdevelopment.com



1st Floor Retail



2nd Floor Office



Weaver Lake Road & 83rd Way Sq. Ft.

1st Floor Retail

Lotus Restaurant	2,850
Maple Grove Floral	2,770
Available	1,126
Mathnasium	1,249
Frankies Pizza	2,457
Beaute Contour	1,574
Device Pitstop	1,852
Turn Style	7,145
Plaza Cleaners	2,697
SoToned	2,047
Subway	1,644
Floyd's 99	1,140
Dairy Queen	3,002

Weaver Lake Road & 83rd Way Sq. Ft.

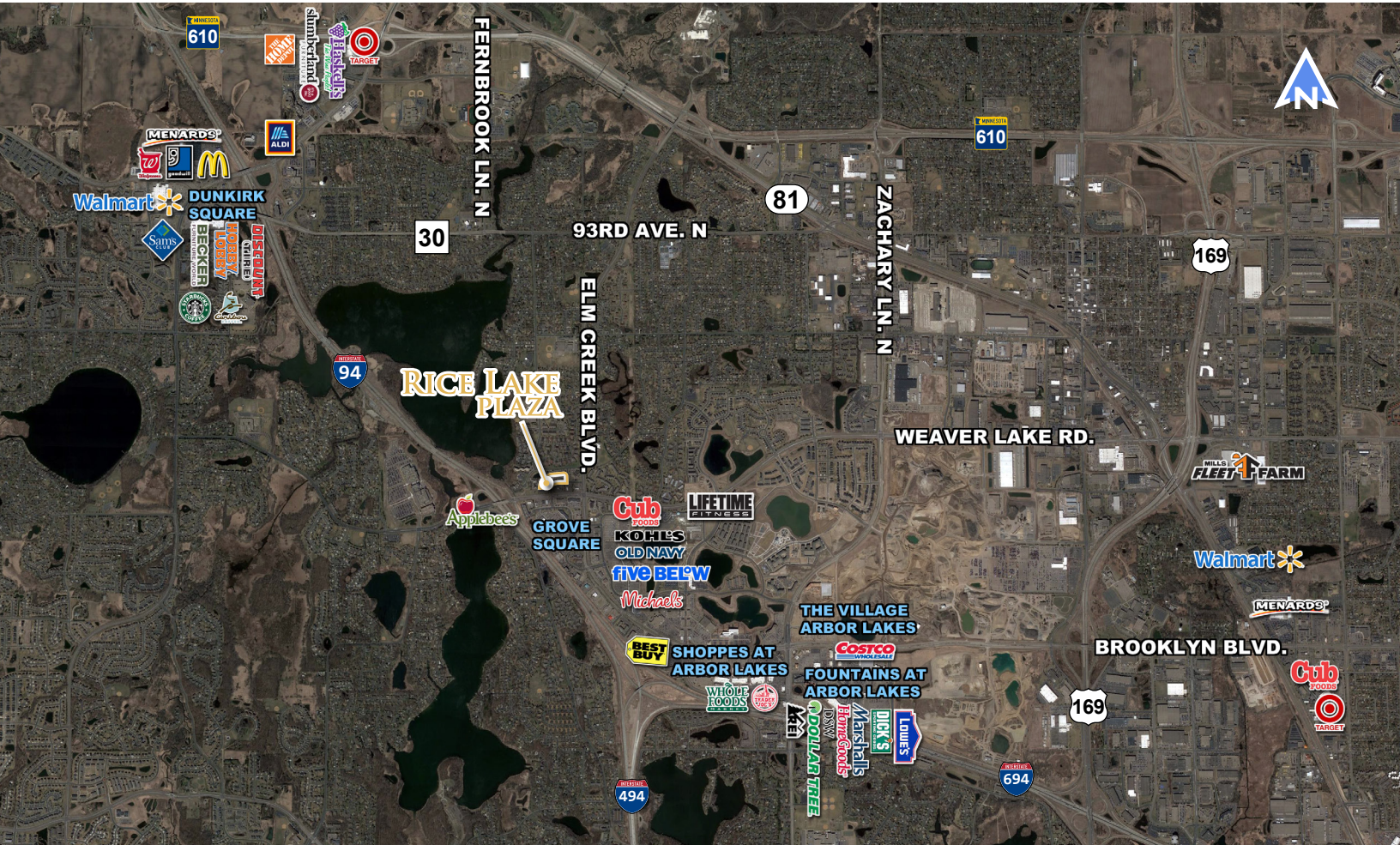
2nd Floor Office

Johnson Chiro	1,600
Available	1,024
Bold North	258
Travel Leaders	2,186
MG Counseling	773
Realty Inc.	522
Reichert Law	818
Lotus Office	514
B&C Home Loans	1,135
Available	520
B&C Home Loans	720



# Rice Lake Plaza

Weaver Lake Road & 83rd Way | Maple Grove, MN



**HJ** hj development

2655 Cheshire Lane North • Plymouth • MN • 55447 • [hjdevelopment.com](http://hjdevelopment.com)