

Ashley Riverview Center

4401 Belle Oaks Drive, North Charleston 29405

FOR LEASE



For more information:

Leslie Fellabom

Senior Vice President

C +1 843 442 7492

leslie.fellabom@avisonyoung.com

Kaitlyn Bridges

Associate

C +1 843 870 3512

kaitlyn.bridges@avisonyoung.com

Chris Fraser, CCIM

Principal & Regional Managing Director

Southern US

chris.fraser@avisonyoung.com

**AVISON
YOUNG**

Class A space with incredible Ashley River views

Ashley Riverview Center is a classic suburban, 76,000 sf multi tenant office building located on the Ashley River in the Faber Place Executive Park. Originally built in 1990 for IBM, the property has recently undergone common area and site improvements. Tenants include Peoples Bank, Enterprise Fleet Management, Morgan & Morgan, Health First Advisors, Moore, Beauston & Woodham, and C.H. Powell.

Spaces	Rate	Type	Size	Availability
Suite 310*	\$27.50/sf/yr	Full service, gross	4,161-10,978 rsf	Immediately

* Suite can be subdivided





Class A space
with unmatched
water views



139 amenities
within 5 minute
drive



Centrally located;
easy access to I-526,
I-26, and airport

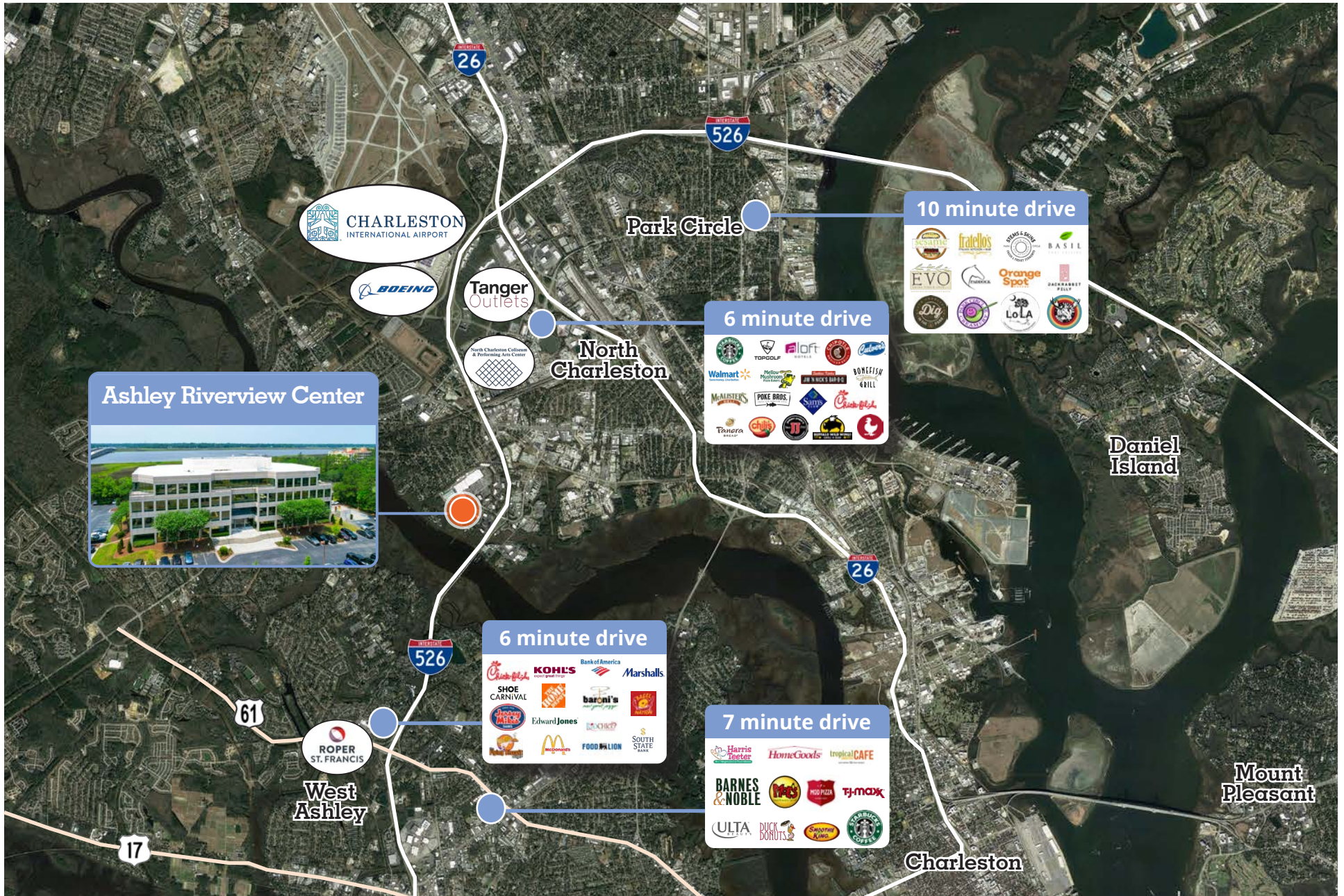


Ample on-site
parking



Location

Ashley Riverview Center

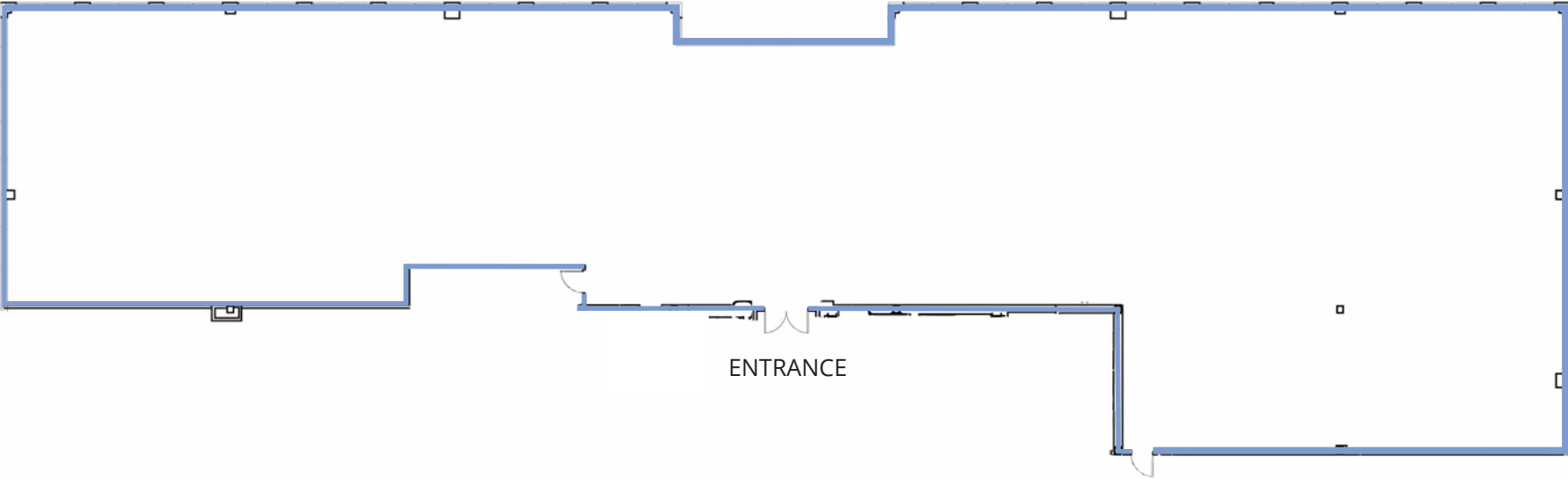


Common areas

Ashley Riverview Center



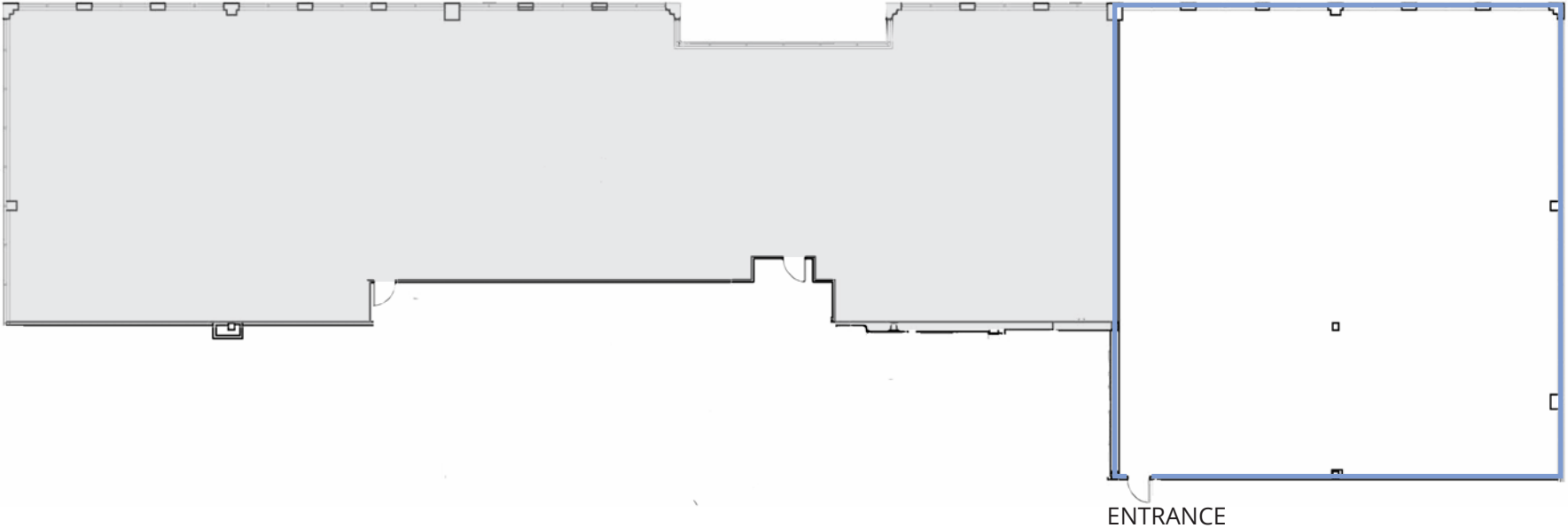
Key Plan Third Floor



Suite 310 Subdivision option | 4,161 rsf

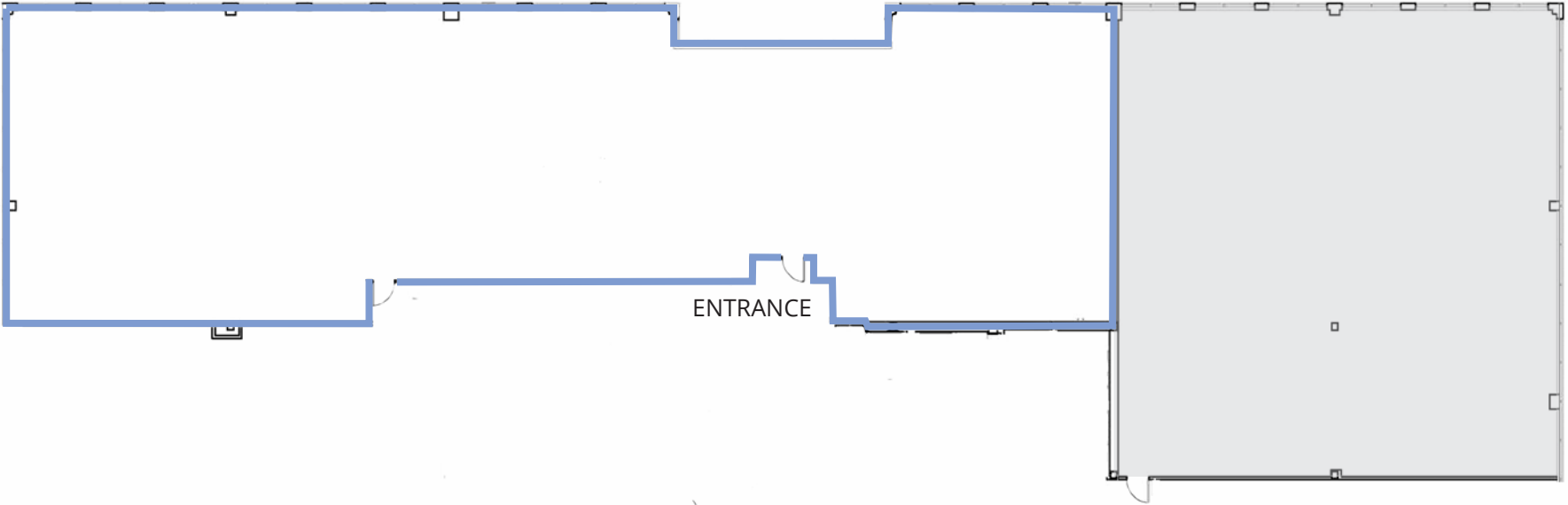
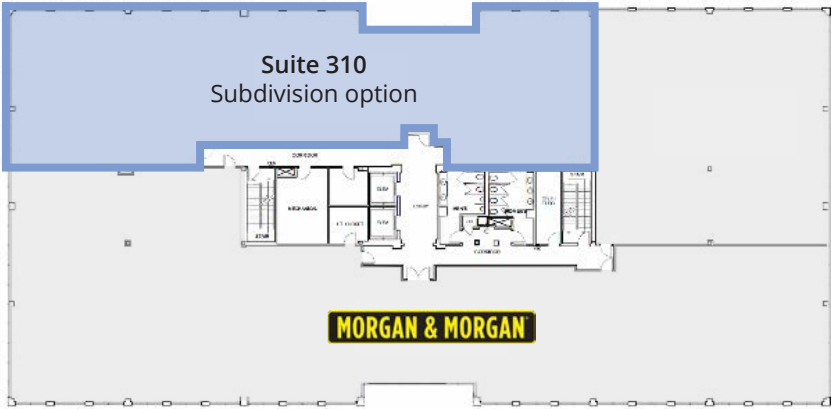
Ashley Riverview Center

Key Plan Third Floor



Suite 310 Subdivision option | 6,415 rsf

Key Plan Third Floor



Suite 310

Ashley Riverview Center



AVISON YOUNG



For more information:

Leslie Fellabom

Senior Vice President

C +1 843 442 7492

leslie.fellabom@avisonyoung.com

Kaitlyn Bridges

Associate

C +1 843 442 7492

kaitlyn.bridges@avisonyoung.com

Chris Fraser, CCIM

Principal & Regional Managing Director

Southern US

chris.fraser@avisonyoung.com