

18

LAKE DRIVE
MOUNTAIN LAKES, NEW JERSEY



Lakefront Country Club for Lease

18 Lake Drive, Mountain Lakes, NJ 07046



18

LAKE DRIVE

MOUNTAIN LAKES, NEW JERSEY

This **18,000 square foot building**, and **1.61 acre** property presents a rare lakefront opportunity on a truly one-of-a-kind estate, offering a **turn-key country club** and event venue available for lease.

Ameneties:

- Elegant event rooms
- Multiple dining areas
- Two full bars and lounges
- Four bowling lanes
- Commercial kitchen
- Tennis courts
- Outdoor pool
- Waterfront patio
- On-site parking

The property blends historic charm with sophisticated modern interior finishes, situated in a **high-end** demographic area that enhances its appeal and market positioning.

Versatile Venue Suited For...

- Weddings
- Private event operations
- Dining club enterprises
- High-end retail
- Residential development
- Assisted living facilities
- Professional office space
- Child-care or adult-care services
- Medical spa operations
- Educational institutions
- Recreational camps
- Place of worship

The unique **lakefront setting** and comprehensive infrastructure make this an extraordinary leasing opportunity for tenants seeking a **distinctive property** with exceptional flexibility and operational potential.



Lakefront opportunity in the heart of Northern New Jersey

The Neighborhood

- Located in Morris County's premier lakefront community known for its natural beauty and historic charm within metropolitan reach
- Prime location within the New York metropolitan area affluent corridor, easily accessible for high-end clientele from Manhattan, Northern New Jersey, and Westchester County
- Historic reputation as a recreational retreat destination dating back to the early 1900s
- Mountain Lakes sits within a 15 minute drive of a dense employment base spanning Parsippany, Morris Plains and the Route 10, Route 202, and I-287 corridors

Demographics

135,759

Total Population

\$143,338

Median Household
Income

43

Median Age

61.2%

Bachelors/Graduate
Degree

51,631

Total Households

157,047

Daytime Population

Data source: USA Esri 2025 within 5 mile radius

18

LAKE DRIVE

MOUNTAIN LAKES, NEW JERSEY

Space Details



Location: 18 Lake Drive, Mountain Lakes, NJ



Size: 18,000 SF



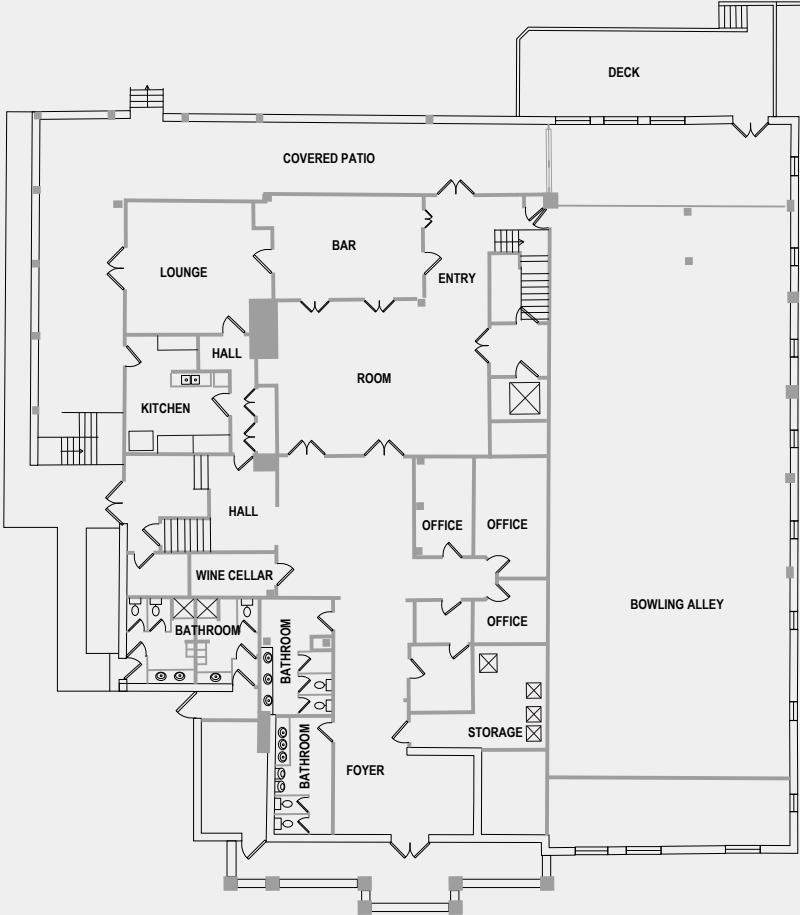
Possession: Immediate



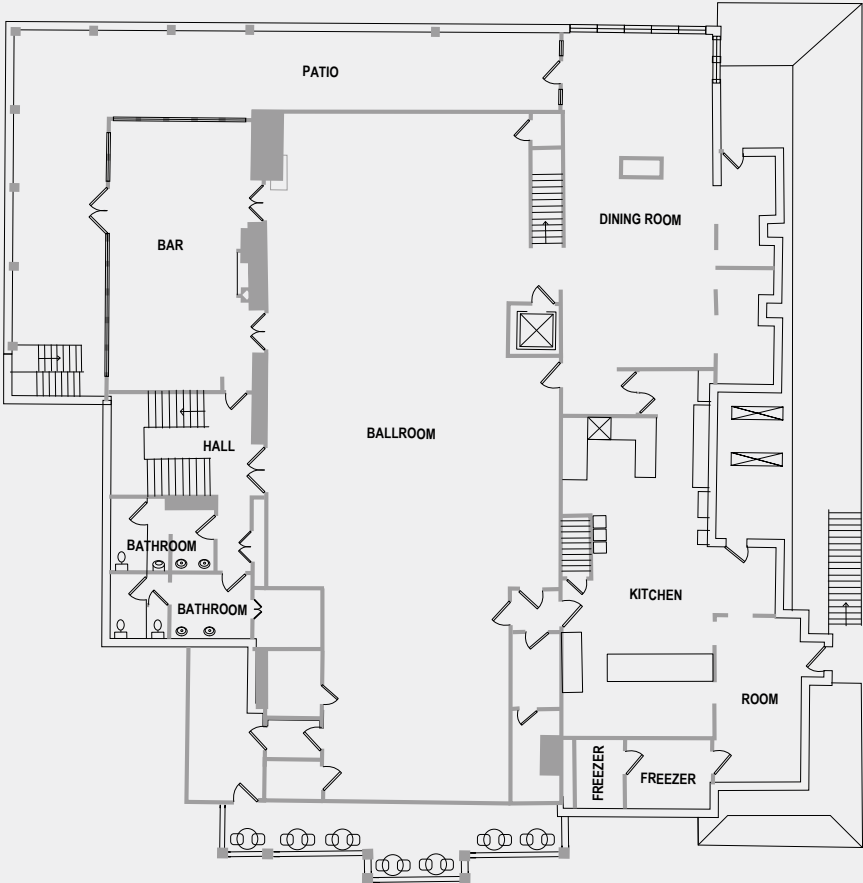
Asking Rent: Upon Request



First Floor Plan



Second Floor Plan



[View Matterport Here](#)

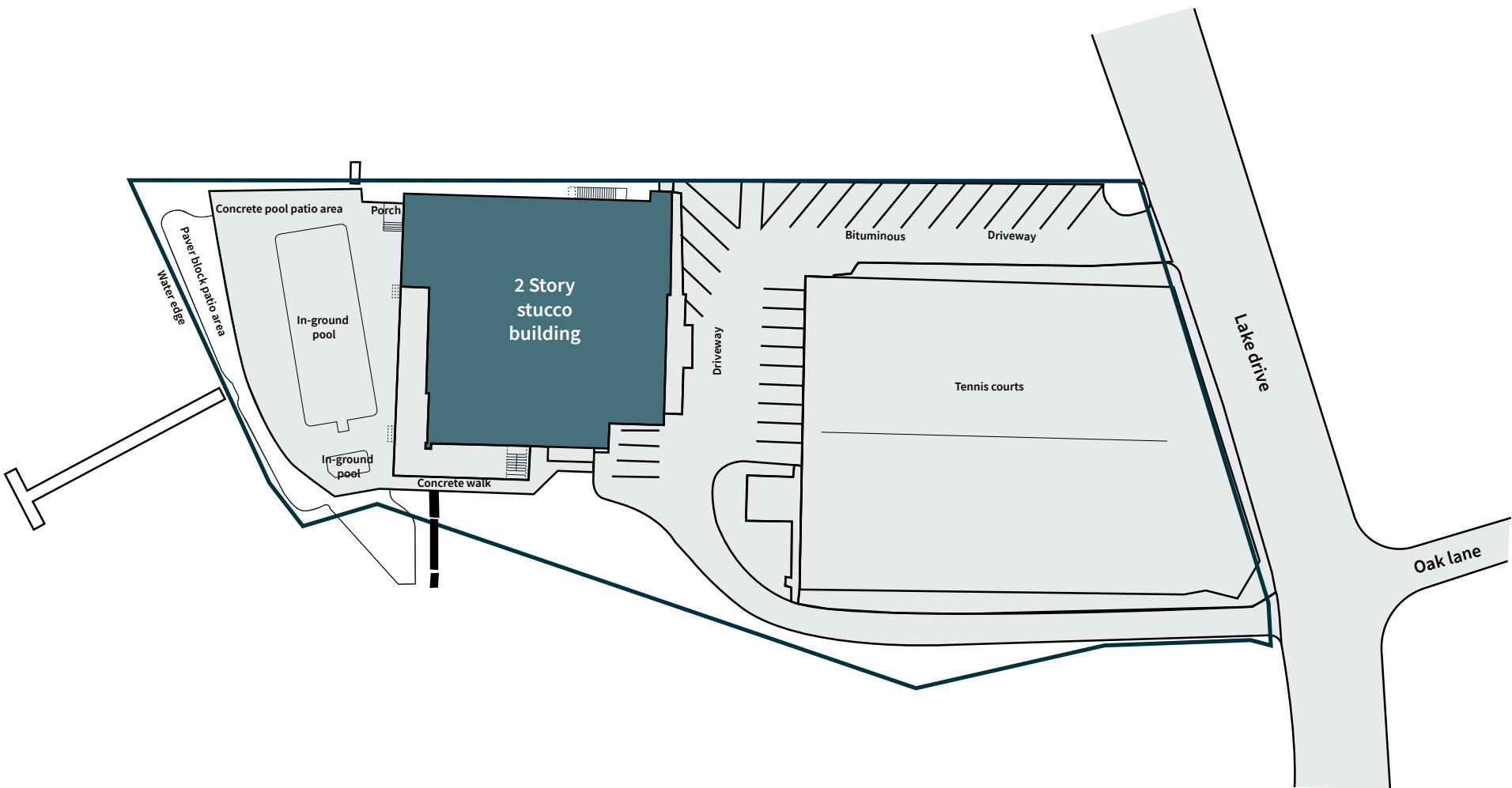
Interior Photos



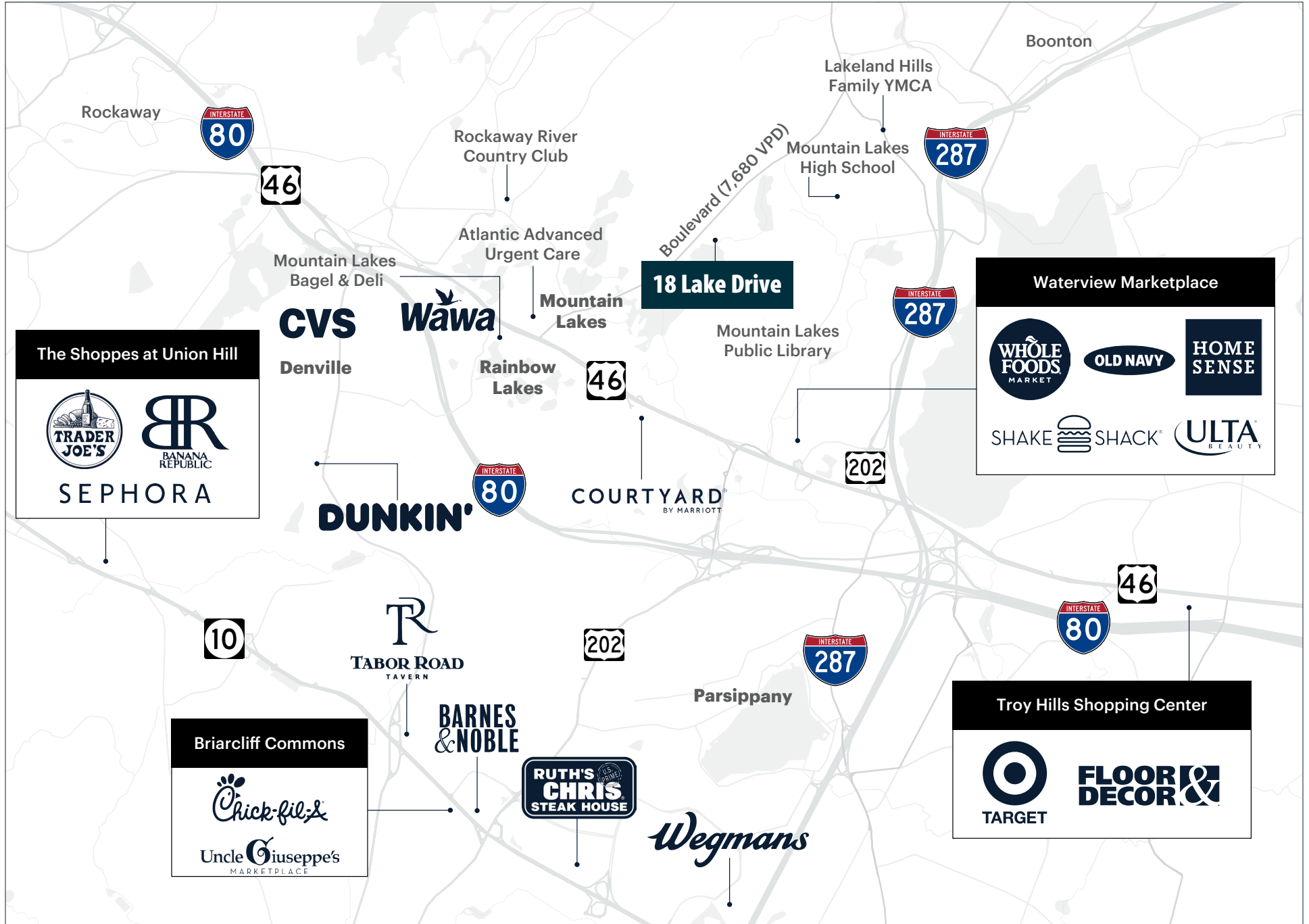
Aerial



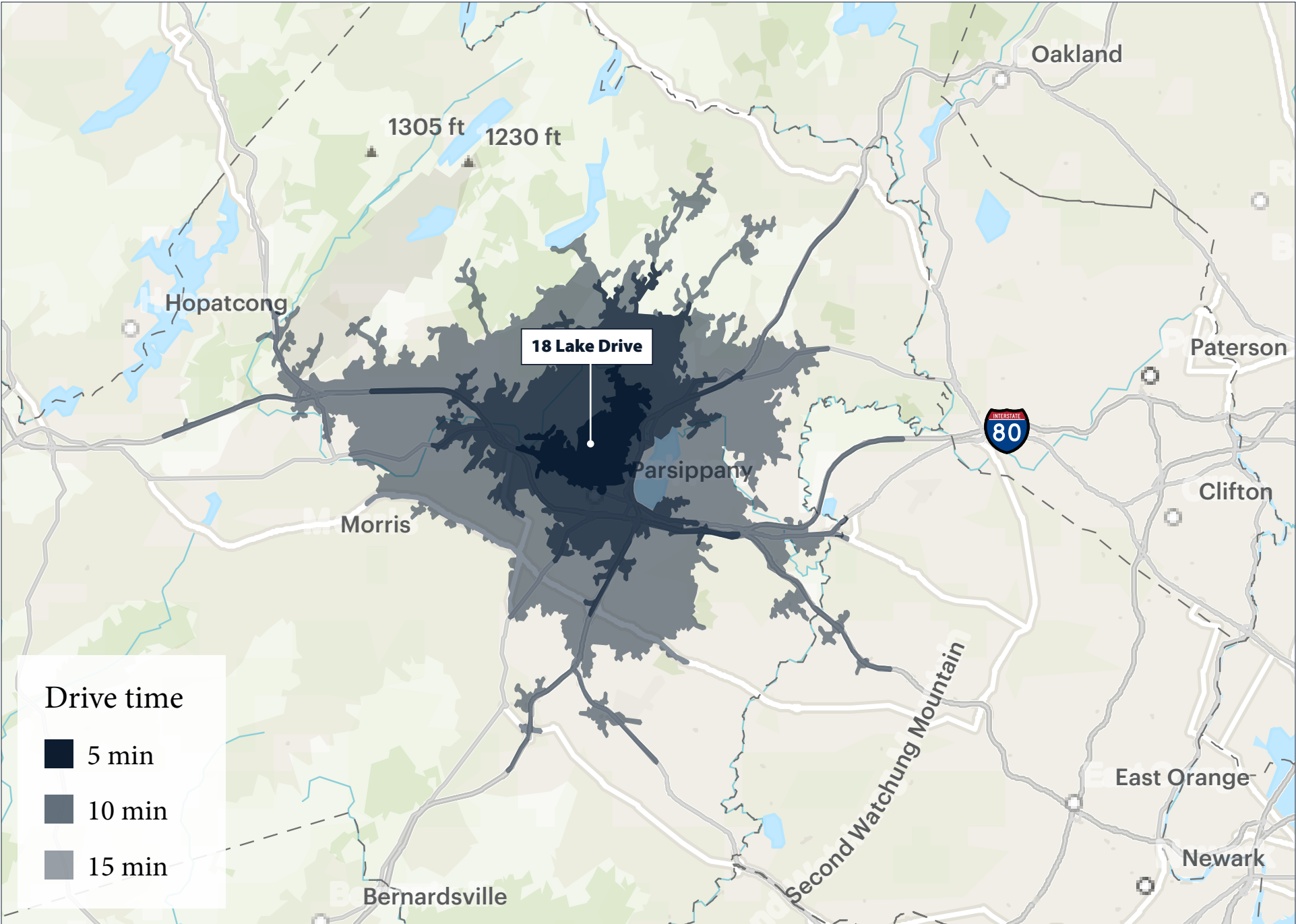
Survey



Retail Aerial



Site Map



18

LAKE DRIVE
MOUNTAIN LAKES, NEW JERSEY

Contacts

David Townes

Managing Director
david.townes@jll.com
+1 917 993 5515

Craig Parcels

Executive Vice President
craig.parcels@jll.com
+1 201 618 7223

Alana Friedman

Vice President
alana.friedman@jll.com
+1 201 741 0990



Although information has been obtained from sources deemed reliable, JLL does not make any guarantees, warranties or representations, express or implied, as to the completeness or accuracy as to the information contained herein. Any projections, opinions, assumptions or estimates used are for example only. There may be differences between projected and actual results, and those differences may be material. JLL does not accept any liability for any loss or damage suffered by any party resulting from reliance on this information. If the recipient of this information has signed a confidentiality agreement with JLL regarding this matter, this information is subject to the terms of that agreement. ©2026 Jones Lang LaSalle Brokerage, Inc. All rights reserved.

