

REGENCY PLAZA

NEC Quentin Road & Euclid Avenue | Palatine, IL



AVAILABLE

SF

- 55,893 SF Former Dominick's position
- 10,540 SF (divisible) existing fully fixtured free standing restaurant
- 800 - 9,632 SF Inline space

TRAFFIC COUNTS



Euclid Avenue: 22,900 vpd | Quentin Road: 10,300 vpd

FEATURES



- Located approximately 1/2 mile west of Route 53 and 1/2 mile east of Harper College with Fremd High School located immediately north of the project
- Algonquin Road office corridor strengthens daytime population along with the dense residential base surrounding the property
- 609 parking spaces

CONTACT

LIZ KREBS

T: 630.954.7362
F: 630.954.7306
LKrebs@MidAmericaGrp.com

DICK SPINELL

T: 630.954.7364
F: 630.954.7306
DSpinell@MidAmericaGrp.com

ANGELA GASBARRO

T: 630.954.7208
F: 630.954.7306
AGasbarro@MidAmericaGrp.com

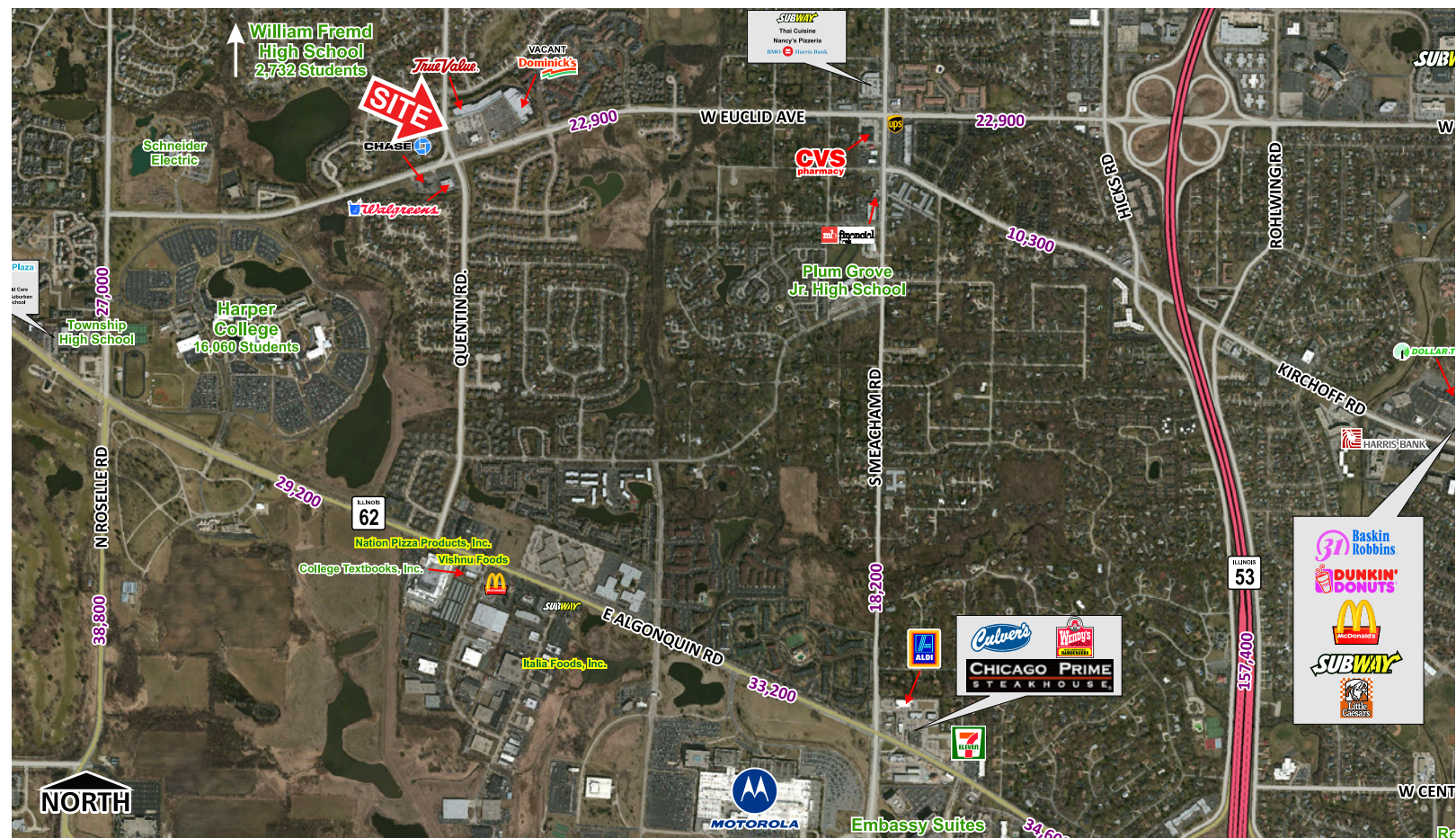


MID-AMERICA[®]
Asset Management, Inc.

One Parkview Plaza, 9th Floor
Oakbrook Terrace, IL 60181
www.midamericagr.com

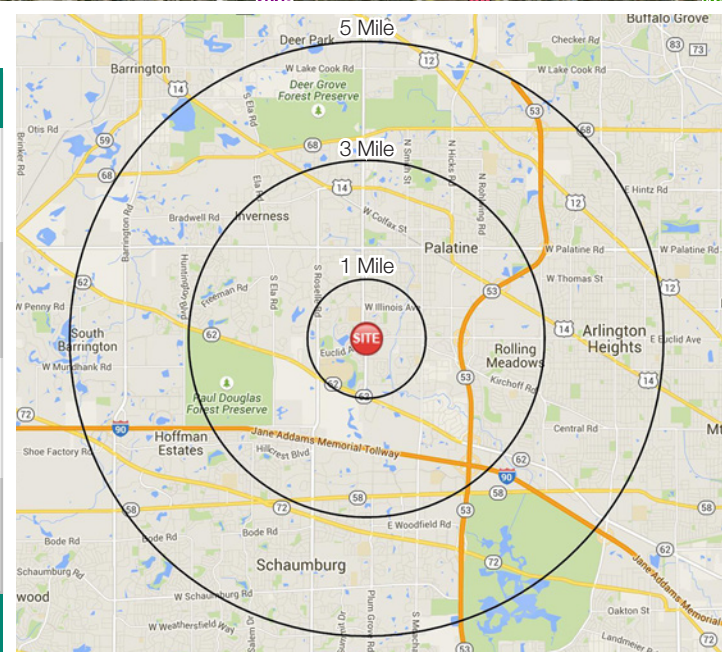
REGENCY PLAZA

NEC Quentin Road & Euclid Avenue | Palatine, IL



TRADE AREA DEMOGRAPHICS

1 Mile	3 Mile	5 Mile
11,412 Est. Population	79,547 Est. Population	247,542 Est. Population
4,248 Est. Households	32,229 Est. Households	96,779 Est. Households
\$131,725 Est. Average Income	\$101,069 Est. Average Income	\$99,992 Est. Average Income
8,546 Est. Daytime Population	122,451 Est. Daytime Population	262,987 Est. Daytime Population



CONTACT

LIZ KREBS

T: 630.954.7362
F: 630.954.7306
LKrebs@MidAmericaGrp.com

DICK SPINELL

T: 630.954.7364
F: 630.954.7306
DSpinell@MidAmericaGrp.com

ANGELA GASBARRO

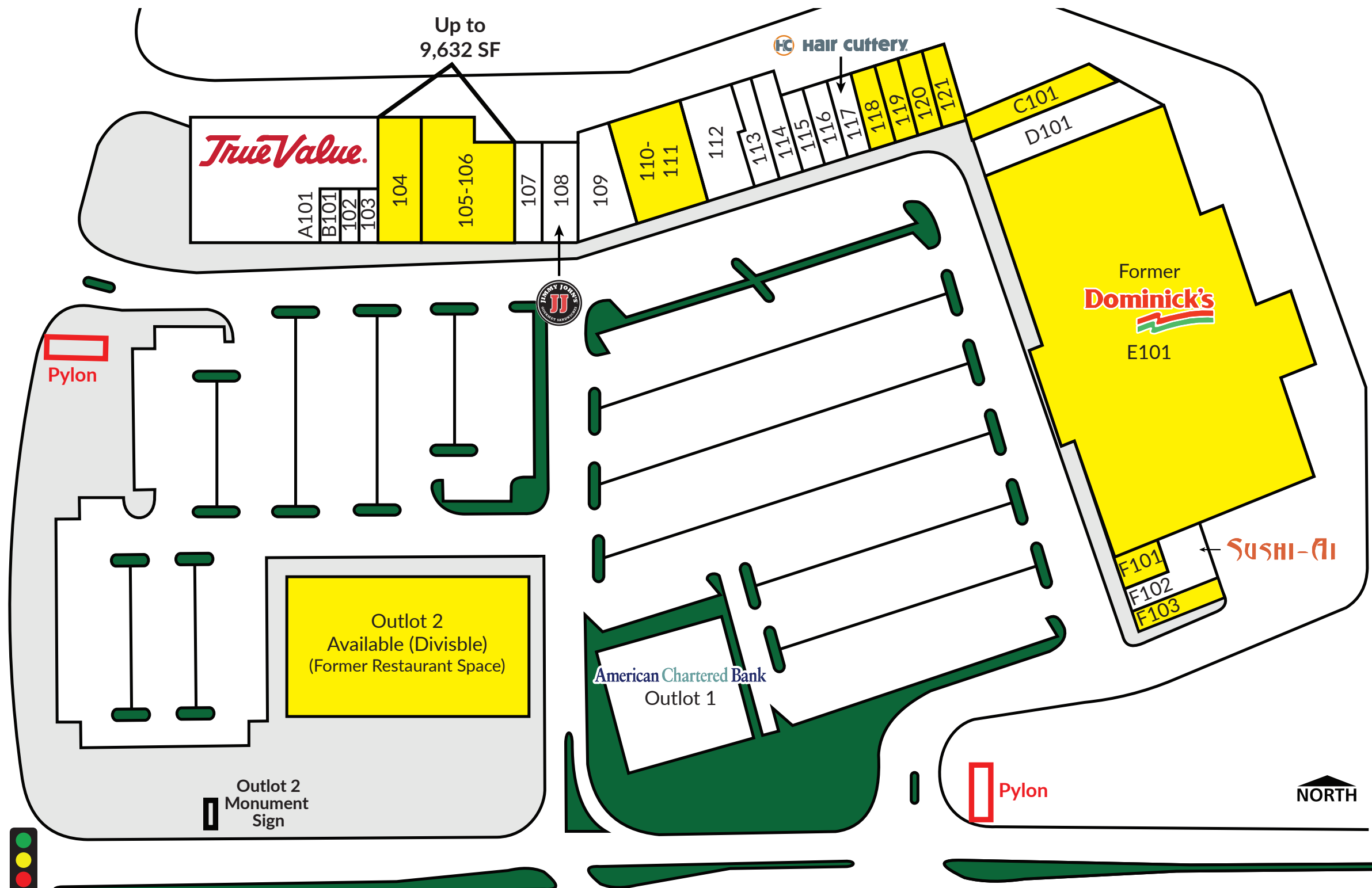
T: 630.954.7208
F: 630.954.7306
AGasbarro@MidAmericaGrp.com



One Parkview Plaza, 9th Floor
Oakbrook Terrace, IL 60181
www.midamericagr.com

REGENCY PLAZA

NEC Quentin Road & Euclid Avenue | Palatine, IL



Address	Suite	Tenant	SF
790	A101	True Value Hardware	13,500
788	B101	Regency Shoe Repair	675
786	102	Certified Driving School	675
784	103	The Nail Spa	817
782	104	Available	2,550
778-780	105-106	Available	7,082
776	107	Regency Cleaners	2,000

Address	Suite	Tenant	SF
774	108	Jimmy John's Subs	2,000
772	109	Elite Salon & Spa	3,168
768	110-111	Available	4,800
766	112	Palatine Music Center	2,800
764	113	Grade Power Learning	2,000
762	114	Image Optics	1,600
760	115	Goodwill	1,200

Address	Suite	Tenant	SF
758	116	Brother's Ribs	1,200
756	117	Hair Cuttery	1,200
754	118	Wah Moy (Available 5/1/16)	1,200
752	119	Available	1,170
750	120	Available	1,230
748	121	Available	1,145
732	C101	Available	4,056

Address	Suite	Tenant	SF
724	D101	W Kim Tae Kwon Do	6,422
720	E101	Former Dominick's (Divisible)	55,893
716	F101	Available	800
710	F102	Sushi Ai	2,515
706	F103	Tan Express (Available 1/1/17)	1,125
700	Outlot #1	American Chartered Bank	5,000
702-704	Outlot #2	Available	10,540
Total GLA			138,363