

FOR LEASE

AVAILABLE OFFICE SPACE

236 FORSYTH STREET SW

ATLANTA, GA 30303

FOR LEASE

\$17.77/RSF

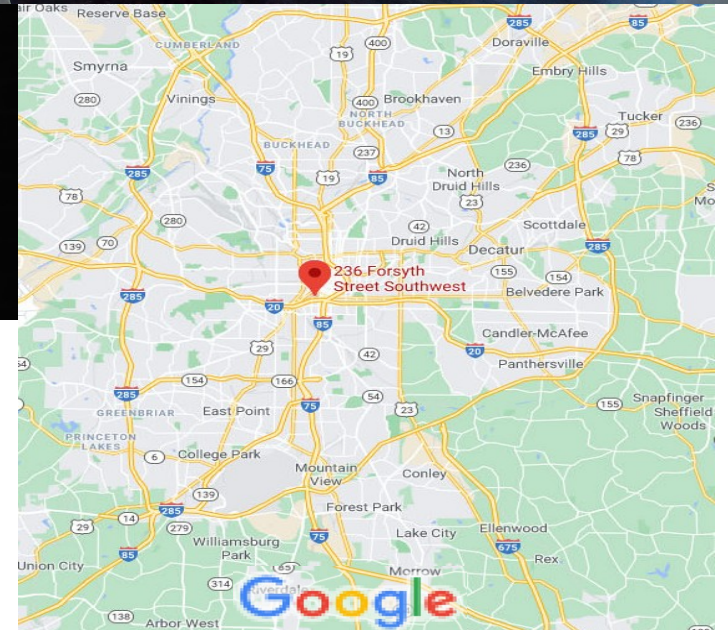
1,665 RSF

PROPERTY HIGHLIGHTS

- Two offices with exposed brick
- Superior location – close to Government offices
- Next to MARTA rail
- Easy access to 75/85 and I-20
- Rate includes utilities (exc. phone/internet) and building services



- Lofty creative space
- Within ½ mile of Mercedes-Benz Stadium



GALLMAN REALTY ASSOCIATES

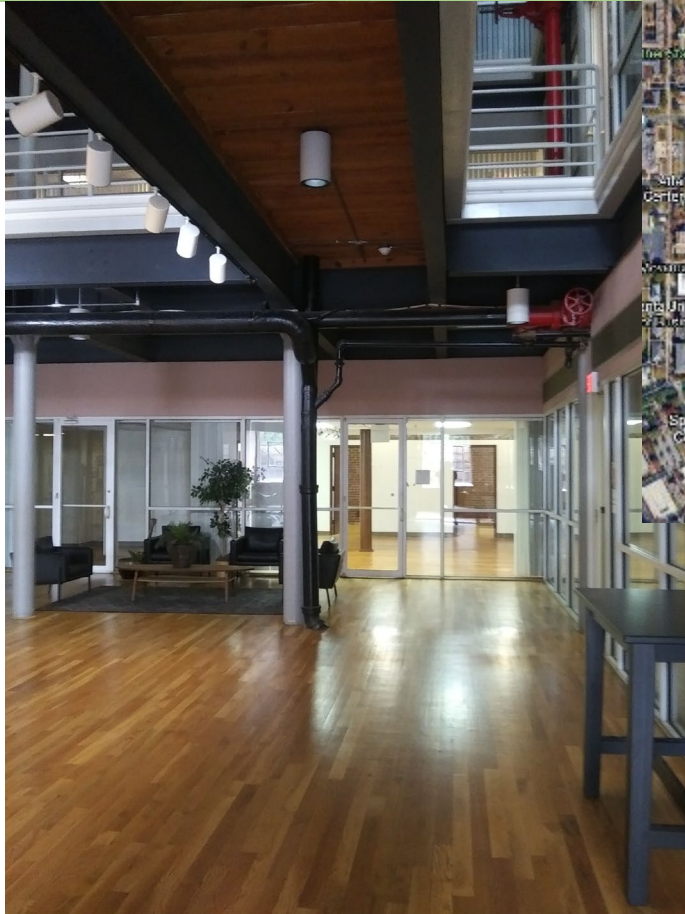
BILL GALLMAN

C (404) 275-4895

O (404) 584-0101 EXT 9

FOR LEASE

236 FORSYTH STREET SW ATLANTA, GA 30303



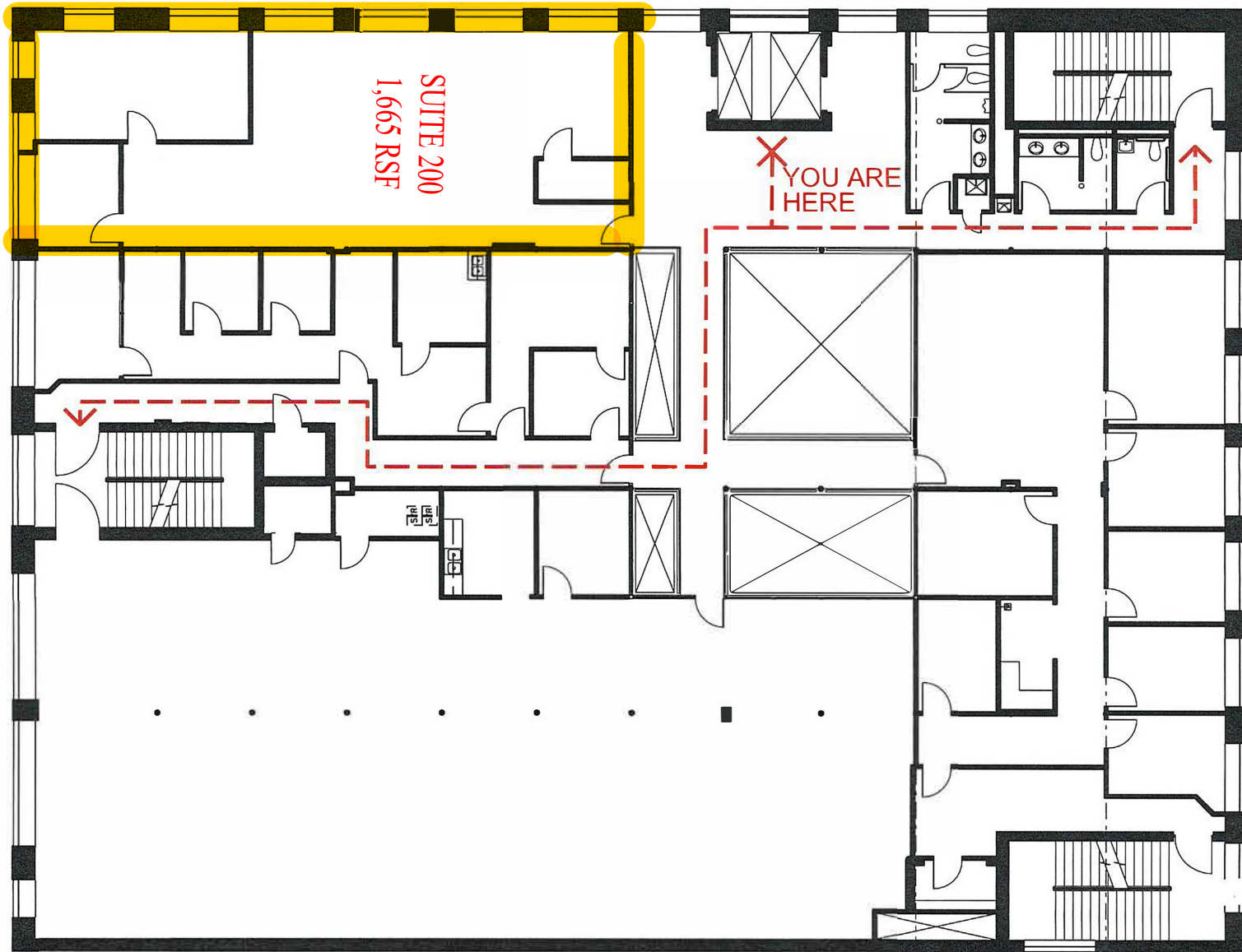
GALLMAN REALTY ASSOCIATES

BILL GALLMAN

C (404) 275-4895

O (404) 584-0101 EXT 9

This information has been secured from sources we believe to be reliable, but we make no representations or warranties, express or implied, as to the accuracy of the information. References to square footage and age are approximate



Suite 200
1,450 SF / 1,665 RSF
GARNETT STATION PLACE
IN FIRE EMERGENCY, DO NOT USE ELEVATOR - USE EXIT STAIRS