



# 11621 MARKON DR

GARDEN GROVE, CA

## FOR LEASE

±14,013 SF FREESTANDING  
INDUSTRIAL FACILITY



### PROPERTY HIGHLIGHTS:

- ±2,000 SF Newly Constructed High-Image Office Area
- 4 GL Truck Doors
- 16' Clear Height
- Fire Sprinklered
- 800 Amps, 277/480 Volt Distributed Power
- Fenced Parking/Yard & Drive Around Building
- 4 Restrooms (2 Office / 2 Shop)
- **Now Vacant & Fully Refurbished**

### CONTACT

#### Greg Diab, CCIM

Principal | Lee & Associates - Orange

714-564-7171

DRE# 01098015

gdiab@lee-associates.com

#### Jack Haley, CCIM

Principal | Lee & Associates - Orange

714-564-7172

DRE# 01064859

jhaley@lee-associates.com

 **LEE &  
ASSOCIATES**  
COMMERCIAL REAL ESTATE SERVICES

All information contained herein has been provided by Seller/Lessor and/or third parties, but has not been independently verified by Lee & Associates or its agent(s). Buyer/Lessee and interested parties should independently verify all information communicated by these sources.

# 11621 MARKON DR

# FOR LEASE

GARDEN GROVE, CA

±14,013 SF INDUSTRIAL BUILDING

## PHOTOS



## CONTACT

### Greg Diab, CCIM

Principal | Lee & Associates - Orange

**714-564-7171**

DRE# 01098015

[gdiab@lee-associates.com](mailto:gdiab@lee-associates.com)

### Jack Haley, CCIM

Principal | Lee & Associates - Orange

**714-564-7172**

DRE# 01064859

[jhaley@lee-associates.com](mailto:jhaley@lee-associates.com)



All information contained herein has been provided by Seller/Lessor and/or third parties, but has not been independently verified by Lee & Associates or its agent(s). Buyer/Lessee and interested parties should independently verify all information communicated by these sources.

# 11621 MARKON DR

# FOR LEASE

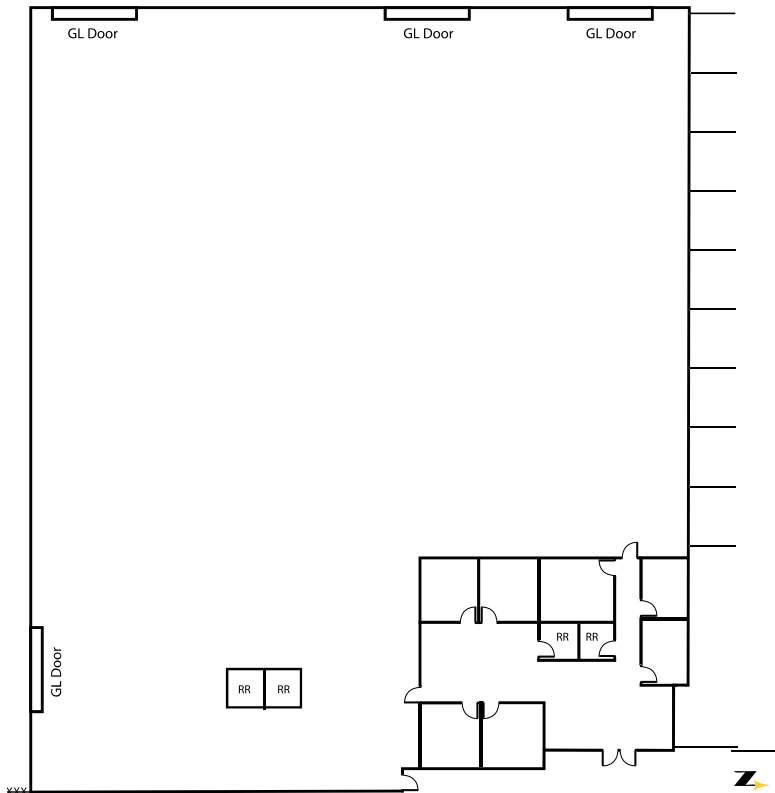
GARDEN GROVE, CA

±14,013 SF INDUSTRIAL BUILDING

## WAREHOUSE



## FLOOR PLAN



## CONTACT

**Greg Diab, CCIM**

Principal | Lee & Associates - Orange

**714-564-7171**

DRE# 01098015

[gdiab@lee-associates.com](mailto:gdiab@lee-associates.com)

**Jack Haley, CCIM**

Principal | Lee & Associates - Orange

**714-564-7172**

DRE# 01064859

[jhaley@lee-associates.com](mailto:jhaley@lee-associates.com)

 **LEE &  
ASSOCIATES**  
COMMERCIAL REAL ESTATE SERVICES

All information contained herein has been provided by Seller/Lessor and/or third parties, but has not been independently verified by Lee & Associates or its agent(s). Buyer/Lessee and interested parties should independently verify all information communicated by these sources.