

BLDG 212

3RD FLOOR, SUITE 303 - 2,152 SF
POSSESSION: SEPTEMBER 1, 2026



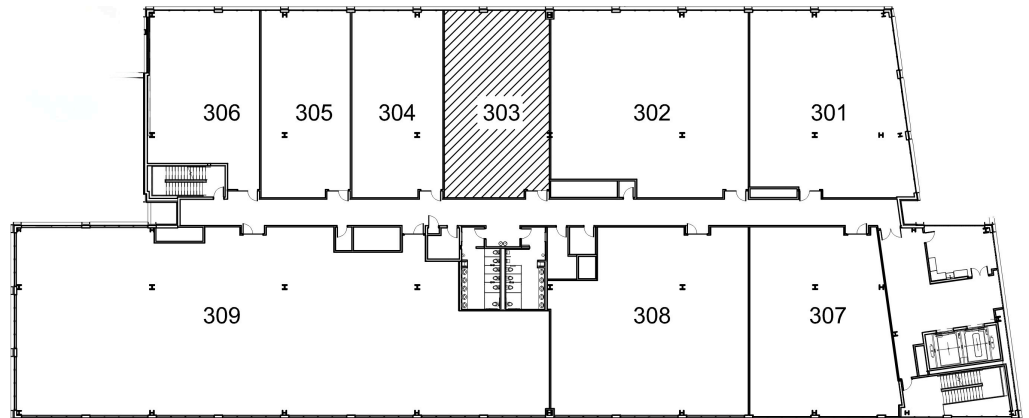
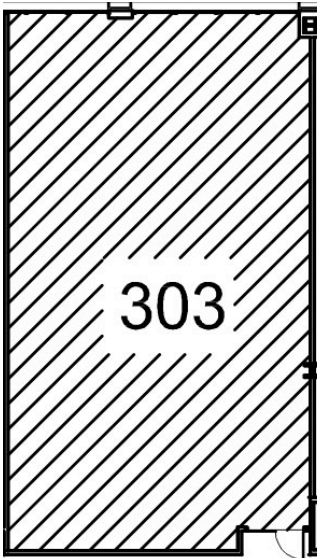
SUITE 303



BLDG 212 LOCATION

UNIT HIGHLIGHTS

- New construction
- Natural light
- 15 ceiling height
- 100 amps 120/208v 3 phase
- Distributed electrical



BROOKLYN | **NAVY YARD**

141 FLUSHING AVENUE
BROOKLYN, NY 11205

JOSEPH COLISTA
SVP, Leasing
jcolista@bnydc.org
929-337-1205