



FOR LEASE | INDUSTRIAL

# 20,000SF FALCON INDUSTRIAL PARK

3420 SW 7TH ST , Ocala, FL 34474



## LEASE OVERVIEW

AVAILABLE SF:	20,000 SF
LEASE RATE:	\$4.00 SF/Yr (NNN)
LOT SIZE:	
BUILDING SIZE:	20,000 SF
GRADE LEVEL DOORS:	2
DOCK HIGH DOORS:	2
CEILING HEIGHT:	24.0 FT
YEAR BUILT:	2009
ZONING:	Heavy Industrial
MARKET:	North Central Florida
SUB MARKET:	Ocala

## PROPERTY DESCRIPTION

Suite 100 is a 20,000sf stand alone building in the Falcon Industrial Park located close to I-75 in Ocala, FL. Suite 100 includes two truck wells and two large 14' ground level doors, along with 1,250sf of office. The office includes four private office and a restroom. Fully sprinkled with 25' column spacing, three phase power and 24'-32' clear height. Ready for immediate occupancy.



### BARTOW MCDONALD IV

Managing Director  
352.274.3800  
bartow.mcdonald@svn.com  
FL #SL3143865

All SVN® Offices Independently Owned & Operated.  
The information listed above has been obtained from sources we believe to be reliable, however, we accept no responsibility for its correctness.



FOR LEASE | INDUSTRIAL

# 20,000SF FALCON INDUSTRIAL PARK

3420 SW 7TH ST , Ocala, FL 34474



**BARTOW MCDONALD IV**

Managing Director  
352.274.3800  
bartow.mcdonald@svn.com  
FL #SL3143865

All SVN® Offices Independently Owned & Operated.  
The information listed above has been obtained from sources we believe to be reliable, however, we accept no responsibility for its correctness.

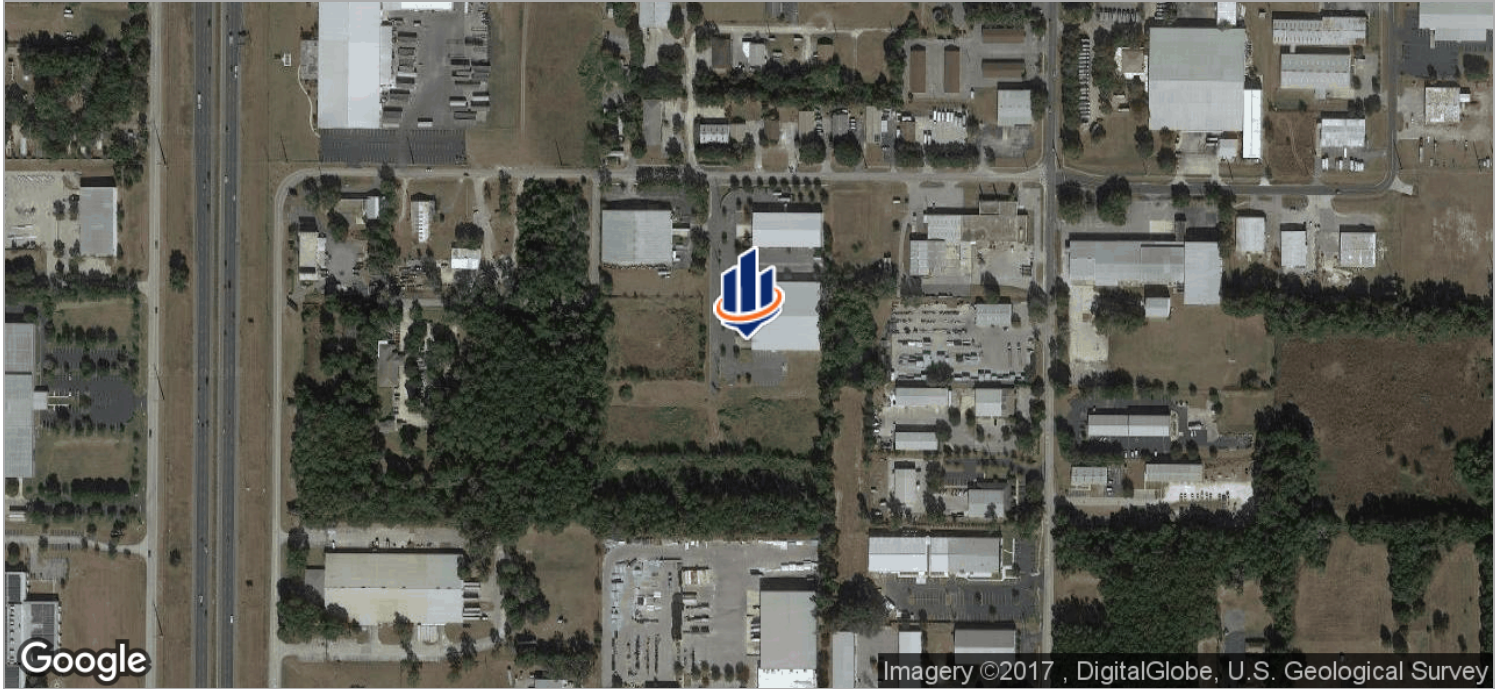
svnflorida.com



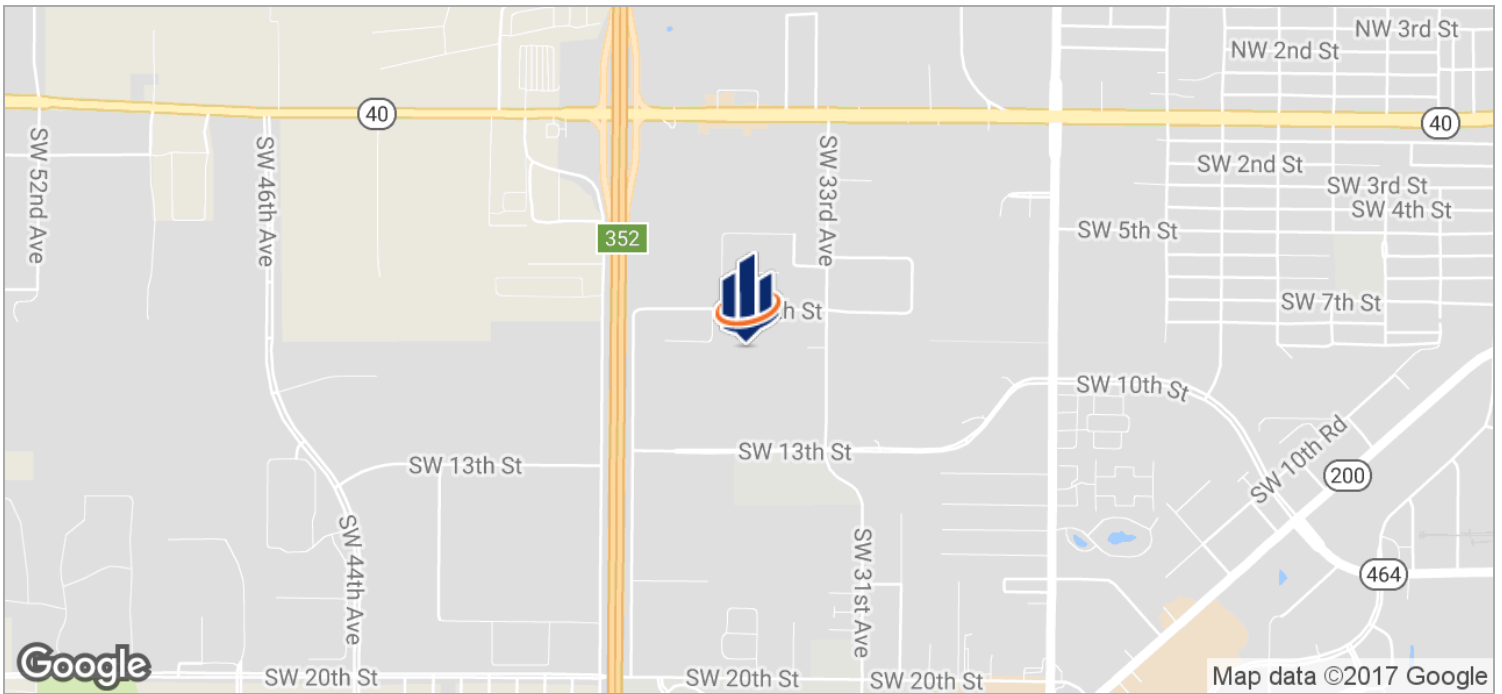
FOR LEASE | INDUSTRIAL

# 20,000SF FALCON INDUSTRIAL PARK

3420 SW 7TH ST , Ocala, FL 34474



Imagery ©2017 , DigitalGlobe, U.S. Geological Survey



Map data ©2017 Google



**BARTOW MCDONALD IV**

Managing Director  
352.274.3800  
bartow.mcdonald@svn.com  
FL #SL3143865

All SVN® Offices Independently Owned & Operated.  
The information listed above has been obtained from sources we believe to be reliable, however, we accept no responsibility for its correctness.

svnflorida.com