



Congressional Pkwy Flex Industrial

3020 Congressional Pkwy

Fort Wayne, IN 46808



Multiple Flex Industrial Units For Lease

Several flex industrial units now available at 3020 Congressional Parkway, ranging in size from a minimum of 1,850 SF up to 7,400 SF. Some suites are contiguous and are able to be combined. Multiple layouts are available to fit your needs.

Property Highlights

- ▶ Each unit equipped with overhead door
- ▶ Ample paved parking
- ▶ Zoned I2 - General Industrial
- ▶ Located in Centennial Industrial Park
- ▶ Less than 1 mile from I-69, SR 930, US 30, US 33, and SR 3
- ▶ **FOR LEASE: \$8.00/SF/YR NNN**

ANDREW ECKERT

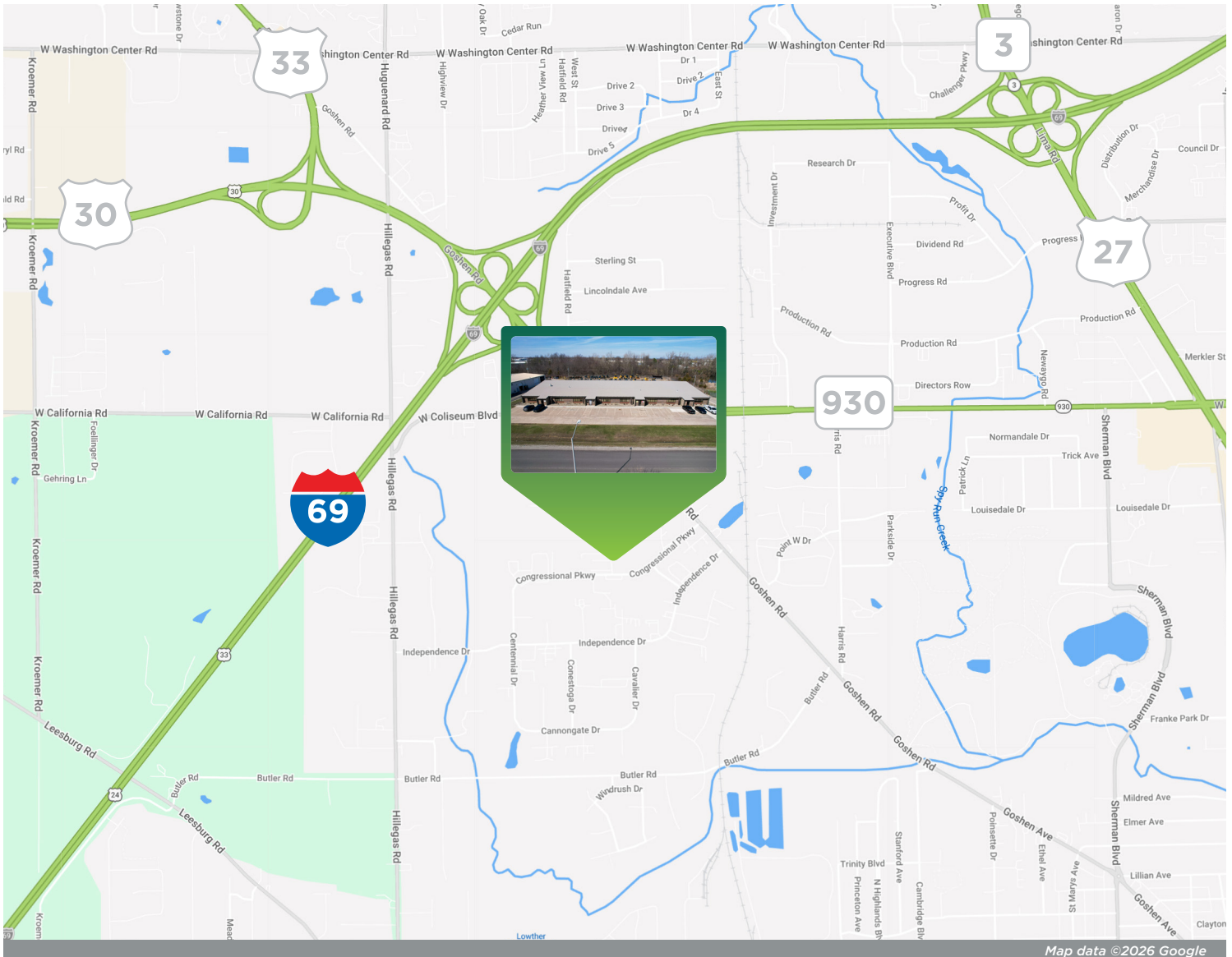
Broker
260 424 8448
andrew.eckert@sturgespg.com

JOHN CAFFRAY

Vice President of Brokerage
260 424 8448
john.caffray@sturgespg.com



Congressional Pkwy Flex Industrial
 3020 Congressional Pkwy
 Fort Wayne, IN 46808



Excellent Location

3020 Congressional Parkway is located within Centennial Industrial Park, an area filled with many national and local industrial users including Murray Equipment, Masters Heating & Cooling, United States Postal Service, FedEx Ship Center, Sherwin-Williams, and Dot & Line Brewing Company.

The site has excellent access to all of Fort Wayne's major interstates and highways, including I-69, US 30, US 33, SR 930, and SR 3/US 27.

ANDREW ECKERT
 Broker
 260 424 8448
 andrew.eckert@sturgespg.com

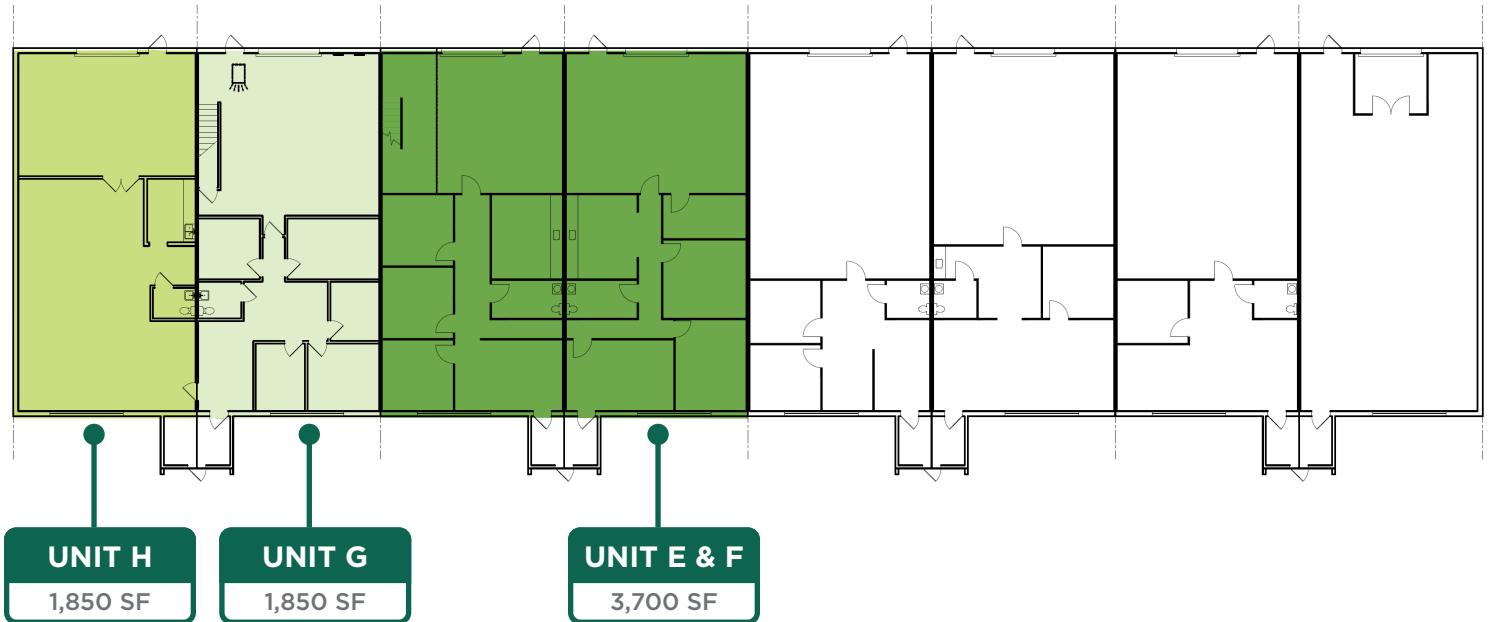
JOHN CAFFRAY
 Vice President of Brokerage
 260 424 8448
 john.caffray@sturgespg.com



Congressional Pkwy Flex Industrial

3020 Congressional Pkwy
Fort Wayne, IN 46808

Available Units



Floor plan may not be to scale. Contact broker for detailed floor plan.



Congressional Pkwy

ANDREW ECKERT

Broker
260 424 8448
andrew.eckert@sturgespg.com

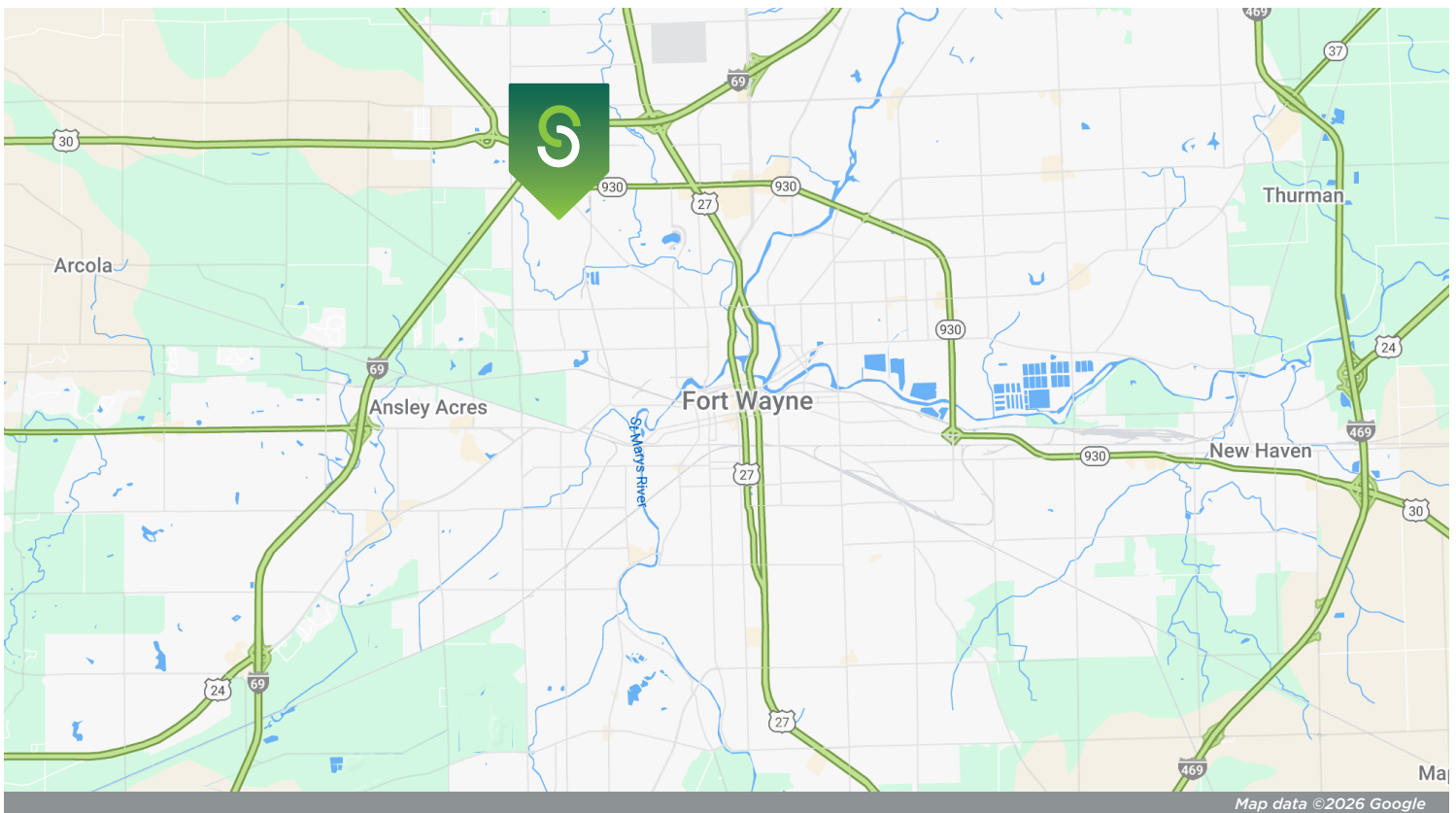
JOHN CAFFRAY

Vice President of Brokerage
260 424 8448
john.caffray@sturgespg.com



Congressional Pkwy Flex Industrial

3020 Congressional Pkwy
Fort Wayne, IN 46808



© 2026 Sturges, LLC. This information has been obtained from sources believed reliable. We have not verified it and make no guarantee, warranty, or representation about it. Any projections, opinions, assumptions, or estimates used are for example only and do not represent the current or future performance of the property. You and your advisors should conduct a careful, independent investigation of the property to determine to your satisfaction the suitability of the property for your needs.

Photos herein are the property of their respective owners and use of these images without the express written consent of the owner is prohibited. Maps used herein are attained via Snazzy Maps, Google Maps, and/or Google Earth, and are therefore the property of Google.

ANDREW ECKERT
Broker
260 424 8448
andrew.eckert@sturgespg.com

JOHN CAFFRAY
Vice President of Brokerage
260 424 8448
john.caffray@sturgespg.com



Congressional Pkwy Flex Industrial

3020 Congressional Pkwy

Fort Wayne, IN 46808

PROPERTY INFORMATION

Address	3020 Congressional Pkwy
City, State, Zip	Fort Wayne, IN 46808
County	Allen
Township	Washington
Parcel Number	02-07-28-251-017.051-073



LEASE INFORMATION

Lease Rate & Type	\$8.00/SF/Yr NNN
Terms	3 year minimum
Availability	Varied

AVAILABLE UNITS

Total Building Area	14,800 SF	
Total Available	7,400 SF	
Max Contiguous	7,400 SF	
Units Available	SF	Monthly Rate
• Unit E & F	3,700	\$2,466.67
• Unit G	1,850	\$1,233.33
• Unit H	1,850	\$1,233.33
• Units E, F, & G	5,550	\$3,666.67
• Units E, F, G, & H	7,400	\$4,933.33

BUILDING INFORMATION

Property Type	Industrial, flex
Year Built	1986
# of Stories	1
Construction Type	Steel frame
Roof	Metal
Floor	Concrete
Heating	Central
A/C	Central
Lighting	Fluorescent
Sprinkler	No

RESPONSIBLE PARTIES

Utilities	Tenant	
Lawn & Snow	Tenant	
Property Taxes	Tenant	\$0.85
Property Insurance	Tenant	\$0.18
Maintenance & Repairs	Tenant	
Common Area	Tenant	\$0.58
Roof & Structure	Landlord	
Janitorial	Tenant	

SITE DATA

Site Acreage	1.97
Zoning & Description	I2 - General Industrial
Nearest Interstate	I-69, 0.9 miles
Traffic Count	14,000 VPD - Goshen Rd

UTILITIES

Electric Provider	AEP
Natural Gas Provider	NIPSCO
Water & Sewer Provider	City of Fort Wayne

ADDITIONAL INFORMATION

- Unit E & F is combined as one unit
- Units H & G are currently combined; can be separated
- Units E, F, & G can be leased for a total of 5,550 SF
- Units E, F, G, & H can be leased for a total of 7,400 SF
- Unit E & F is available 05/01/2026
- Unit G is available 06/01/2026
- Unit H is available 06/01/2026

ANDREW ECKERT

Broker
260 424 8448
andrew.eckert@sturgespg.com

JOHN CAFFRAY

Vice President of Brokerage
260 424 8448
john.caffray@sturgespg.com