



CLASS A INDUSTRIAL SPACE IN THE INLAND EMPIRE WEST



90,723 SF AVAILABLE FOR LEASE

BUILDING 4 AT THE MERGE

PREMIER WAREHOUSE DISTRIBUTION FACILITY AVAILABLE

13977 The Merge Street | Eastvale, CA

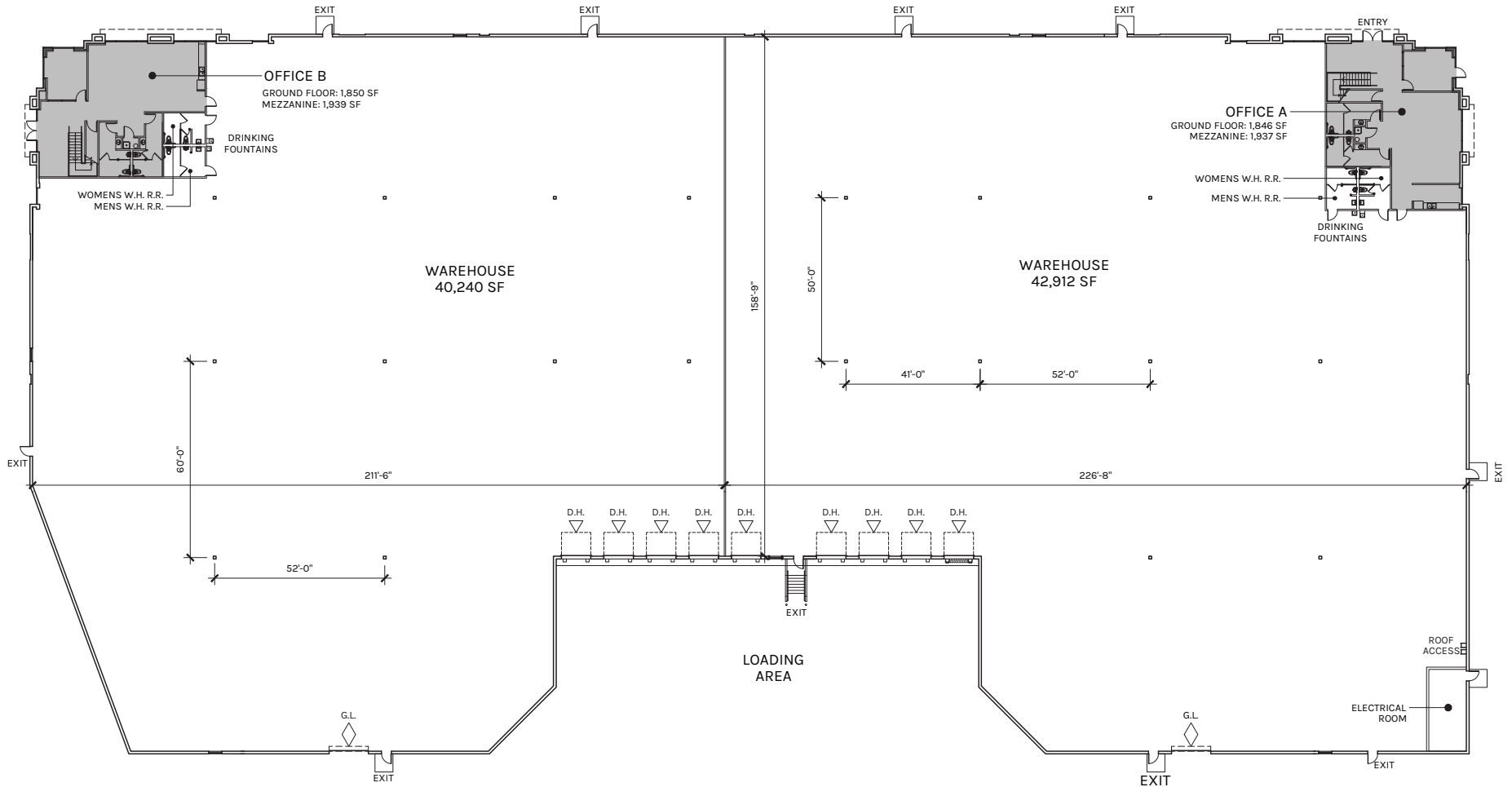




Property Highlights

- 90,723 Square Feet
- 3,696 Square Feet Office
- 3,876 Finished Mezzanine Office
- 9 Dock High Doors
- 2 Grade Level Doors
- 32' Minimum Clear Height
- ESFR Sprinklers
- LED Warehouse Lighting
- 2.5% Skylights
- Contiguous to brand new retail. Amenities include: Starbucks, Sprouts, Chevron, Rite-Aid and more.





WAREHOUSE
83,152 SF

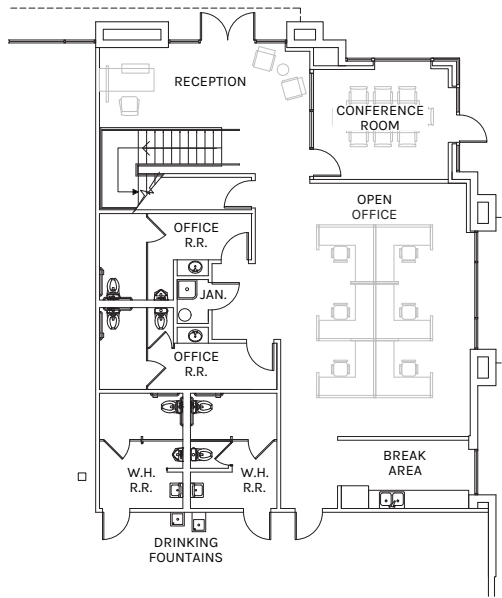
OFFICES A & B
7,571 SF

TOTAL
90,723 SF

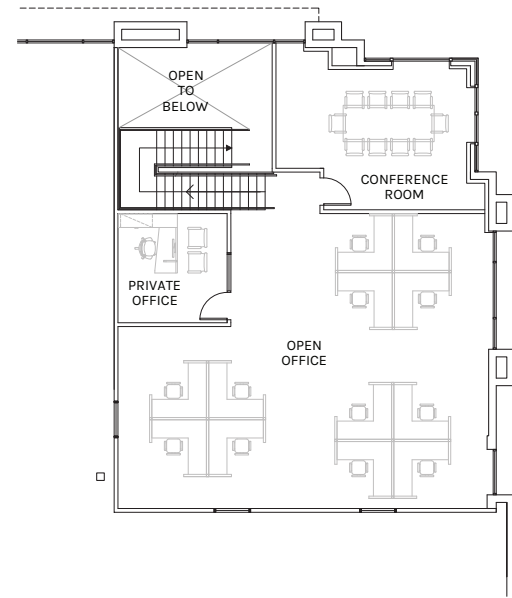
PLAN LAYOUT SUBJECT TO FIELD CONDITIONS AND MAY DIFFER FROM PLAN AS SHOWN. ALL INFORMATION PRESENTED ON THIS DRAWING IS PRESUMED TO BE ACCURATE, HOWEVER TENANT SHOULD VERIFY PERTINENT INFORMATION PRIOR TO COMMITTING TO A LEASE. ANY FURNITURE OR APPLIANCES SHOWN ON PLAN ARE FOR CONCEPT ONLY AND WILL BE TENANT PROVIDED.



Office A 3,782 SF

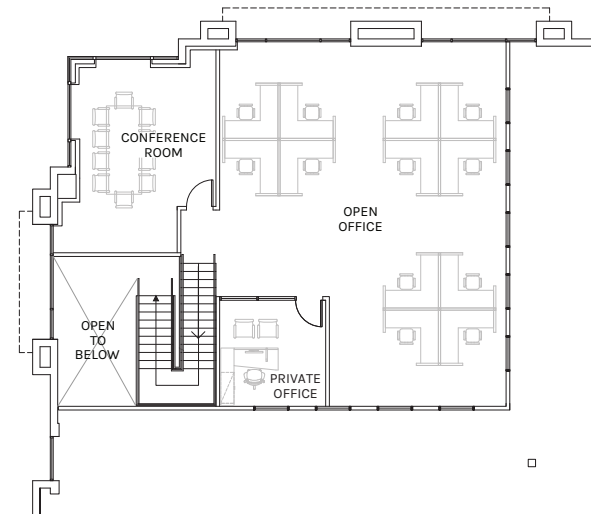
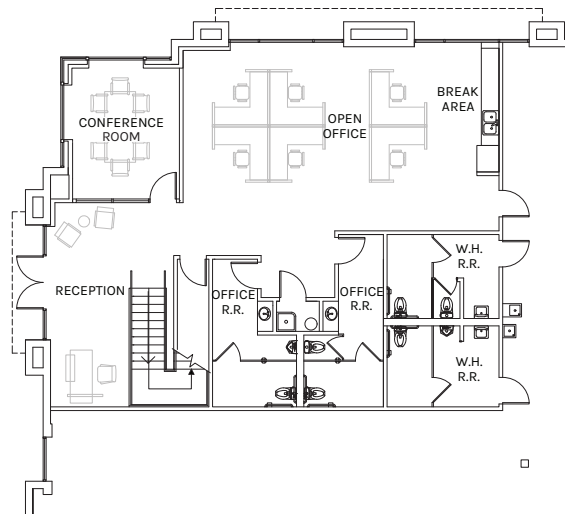


GROUND FLOOR OFFICE A
1,846 SF



MEZZANINE OFFICE A
1,936 SF

Office B 3,789 SF





Location Highlights

- Part of a larger 6 building project with 10 units.
- Located at the NEC of Limonite Avenue and Archibald Avenue in Eastvale.
- 55 miles from the ports of LA and Long Beach.
- Direct access I-15, SR 60, SR 71, and SR 91 freeways.
- December 2020 class A construction.
- Inland Empire West location with close proximity to Ontario International Airport.



**Rexford
Industrial**

Leasing Contacts

ALEX HEIM

Senior Vice President
909-418-2287
alex.heim@cbre.com
CA License #01945521

ELOY COVARRUBIAS

Executive Vice President
909-418-2284
eloy.cova@cbre.com
CA License #01462376

JOE WERDEIN

Executive Vice President
909-418-2285
joe.werdein@cbre.com
CA License #01791235

GARRY JENKINS

Senior Associate
909-418-2147
garry.jenkins@cbre.com
CA License #02008115

CBRE

© 2026 CBRE, Inc. All rights reserved. This information has been obtained from sources believed reliable, but has not been verified for accuracy or completeness. You should conduct a careful, independent investigation of the property and verify all information. Any reliance on this information is solely at your own risk. CBRE and the CBRE logo are service marks of CBRE, Inc. All other marks displayed on this document are the property of their respective owners, and the use of such logos does not imply any affiliation with or endorsement of CBRE. Photos herein are the property of their respective owners. Use of these images without the express written consent of the owner is prohibited.