



Downtown Office Space in Historic Building

This office space is located Downtown Regina overlooking Victoria Park and within walking distance to Cornwall Centre.

It provides excellent availability to the amenities of Regina's downtown district while offering private offices (3), a boardroom, a kitchenette, underground parking, and plenty of natural sunlight in an open concept layout.



Asking Lease Rate:
\$20.00 psf



Op Costs:
\$7.00 psf est



Zoning:
DCD-D Downtown



Possession:
Immediate



Available Area:
2,136 sf

For further information

Linely Schaefer

Managing Director, Broker
306 559 9009
linely.schaefer@avisonyoung.com

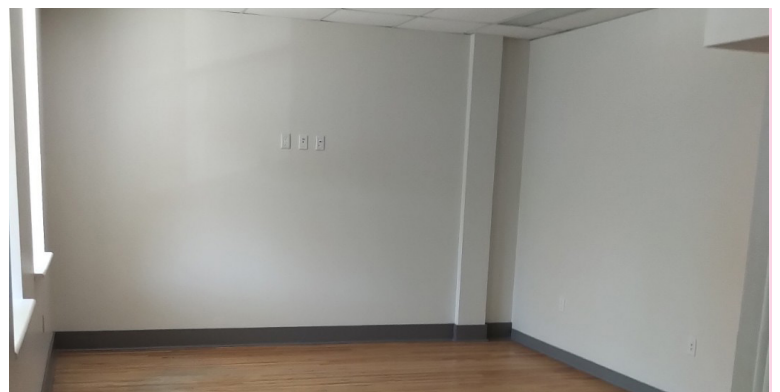
Hali Lawrence

Commercial Sales & Leasing
306 559 9006
hali.lawrence@avisonyoung.com

avisonyoung.com

Office Space For Lease

204 - 1945 Scarth Street, Regina, SK S4P 2H1



Linely Schaefer
Managing Director
306 559 9009
linely.schaefer@avisonyoung.com

Hali Lawrence
Commercial Sales & Leasing
306 559 9006
hali.lawrence@avisonyoung.com

**AVISON
YOUNG**