

FOR LEASE

1335 West Main Street, Lowell, MI



Premier End-Cap Retail Opportunity in Lowell

Space available in a high visibility retail center on M-21 in Lowell. Great opportunity to locate your business in Lowell's key retail corridor!

AVAILABLE SPACE:

- Suite G: 2,700 RSF

BUILDING FEATURES

- 20,364 SF in line retail strip center
- Suitable for office or retail
- Ample doorstep parking
- Adjacent to the new Jimmy John's and Culver's
- Join Rite Aid, Grand River Orthodontics, BC Pizza and Advanced Eyecare Professionals
- Located just one mile west of Downtown Lowell and 5 miles to Interstate 96

LEASE RATE:

\$13.95

PSF/YEAR, NNN

(NNN's approximately \$1.75/sq. ft.)

FOR MORE INFORMATION:

Blake Rosekrans

Vice President, Brokerage Services

Direct: 616 726-5476

blake.rosekrans@martincommercial.com

© 2024 MARTIN COMMERCIAL PROPERTIES, INC. ALL RIGHTS RESERVED. THIS INFORMATION HAS BEEN OBTAINED FROM SOURCES BELIEVED RELIABLE BUT HAS NOT BEEN VERIFIED FOR ACCURACY OR COMPLETENESS. YOU SHOULD CONDUCT A CAREFUL, INDEPENDENT INVESTIGATION OF THE PROPERTY AND VERIFY ALL INFORMATION. ANY RELIANCE ON THIS INFORMATION IS SOLELY AT YOUR OWN RISK. MARTIN COMMERCIAL PROPERTIES AND THE MARTIN LOGO ARE SERVICE MARKS OF MARTIN COMMERCIAL PROPERTIES, INC. ALL OTHER MARKS DISPLAYED ON THIS DOCUMENT ARE THE PROPERTY OF THEIR RESPECTIVE OWNERS. PHOTOS HEREIN ARE THE PROPERTY OF THEIR RESPECTIVE OWNERS. USE OF THESE IMAGES WITHOUT THE EXPRESS WRITTEN CONSENT OF THE OWNER IS PROHIBITED.

3949 Sparks Drive SE, Suite 106

Grand Rapids, MI 49546

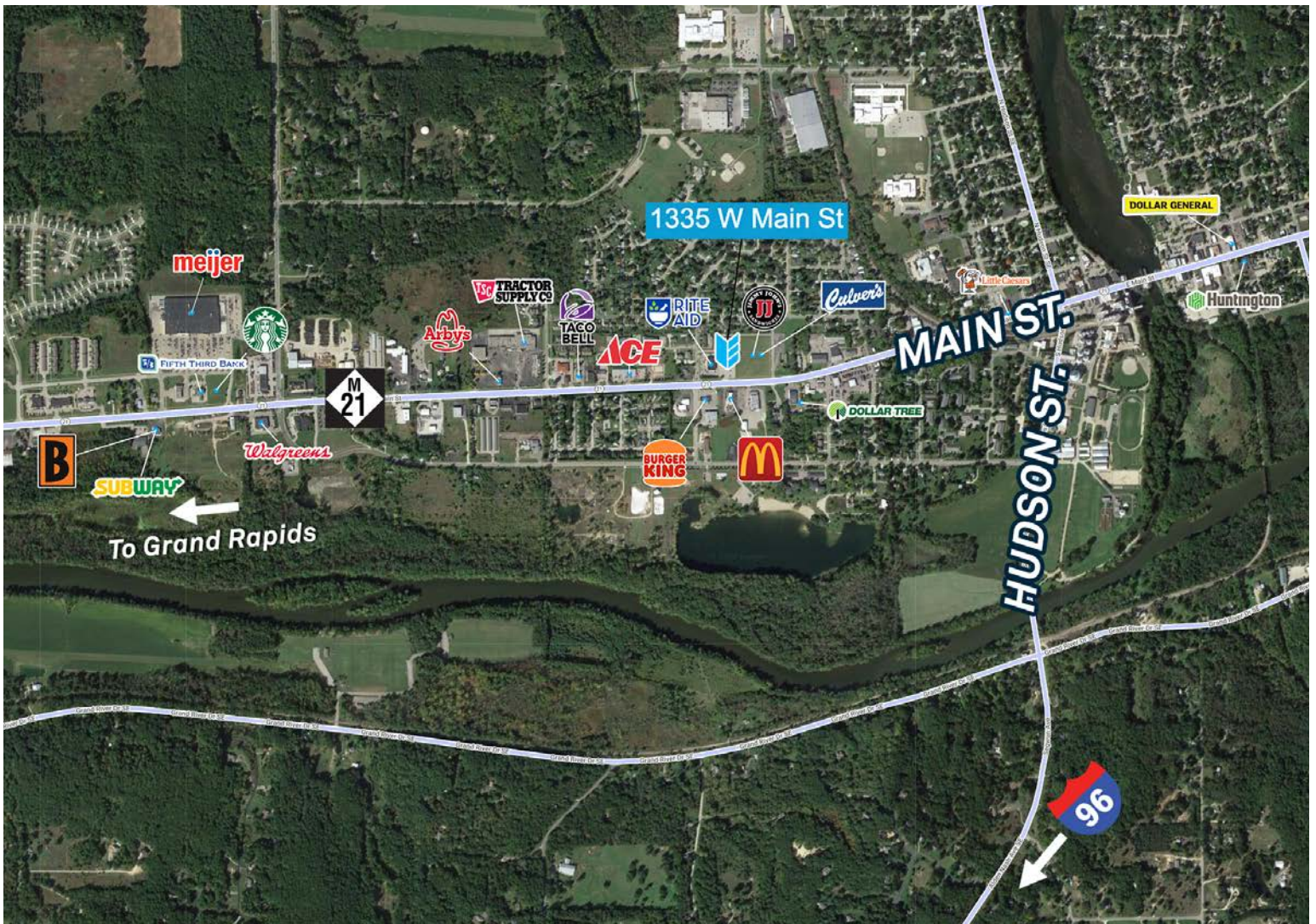
616.831.2200

martincommercial.com

SITE PLAN:







AREA INFORMATION:

1 Mile

To downtown Lowell

1.2 Miles

East of Meijer

5 Miles

To I-96/M-50 interchange

8 Miles

To Ada Village

15 Miles

To Grand Rapids

Convenient

To restaurants, shopping and interstates

DEMOGRAPHICS			
Proximity	1-Mile	3-Mile	5-Mile
Population	3,236	11,802	17,485
Average Households	1,284	4,398	6,443
Average Household Income	\$61,779	\$82,135	\$84,704

TRAFFIC COUNTS	
Main St. (M-21)	14,113 VPD
Hudson St (to I-96)	12,353 VPD