

MERCER
COMMERCIAL



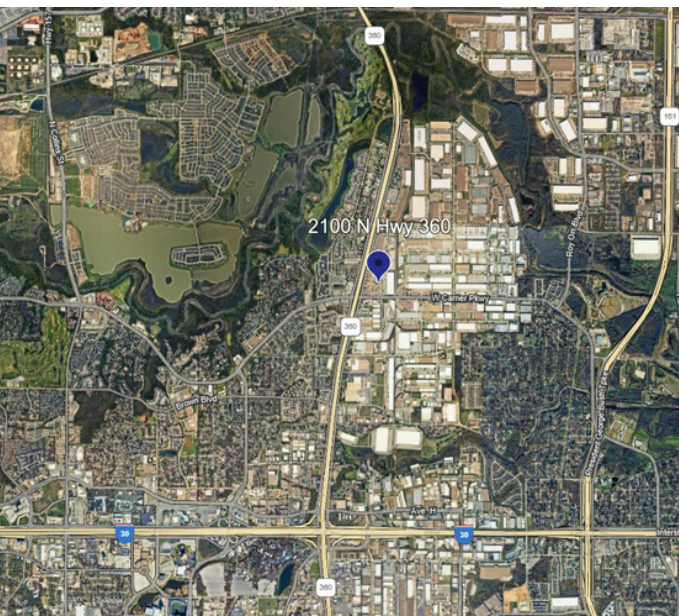
COMPANY
REAL ESTATE



FOR LEASE

AVAILABLE: 2,615 SF

2100 N HWY 360 #303-305B, GRAND PRAIRIE, TX 75050



PROPERTY FEATURES

- Office SF: 2,615
- 8 Private Offices
- 2 Restrooms
- Full Office

NICK FULTON

Market Director

(469) 616-8783

nfulton@mercerc-company.com

CORBY HODGKISS, SIOR

Executive Vice President

(469) 360-3918

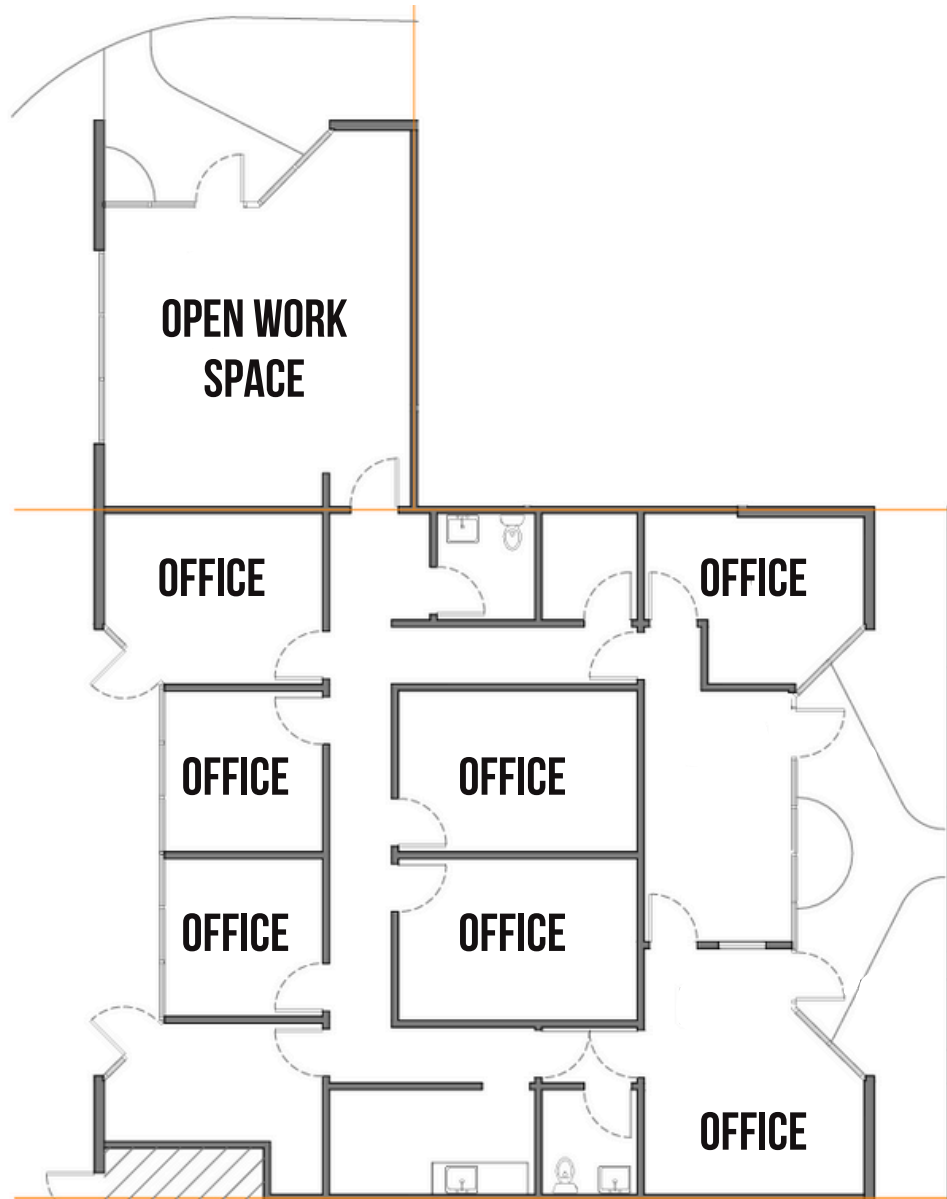
chodgkiss@mercerc-company.com

Mercer Company
2461 N Stemmons Fwy, Dallas, TX 75207

mercerc-company.com

AVAILABLE: 2,615 SF

2100 N HWY 360 #303-305B, GRAND PRAIRIE, TX 75050



NICK FULTON

Market Director
(469) 616-8783



CORBY HODGKISS, SIOR

Executive Vice President
(469) 360-3918

The information contained herein has been given to us by the owner of the property or other sources we deem reliable. We have no reason to doubt its accuracy, but we do not guarantee it. All information should be verified before purchase or lease.