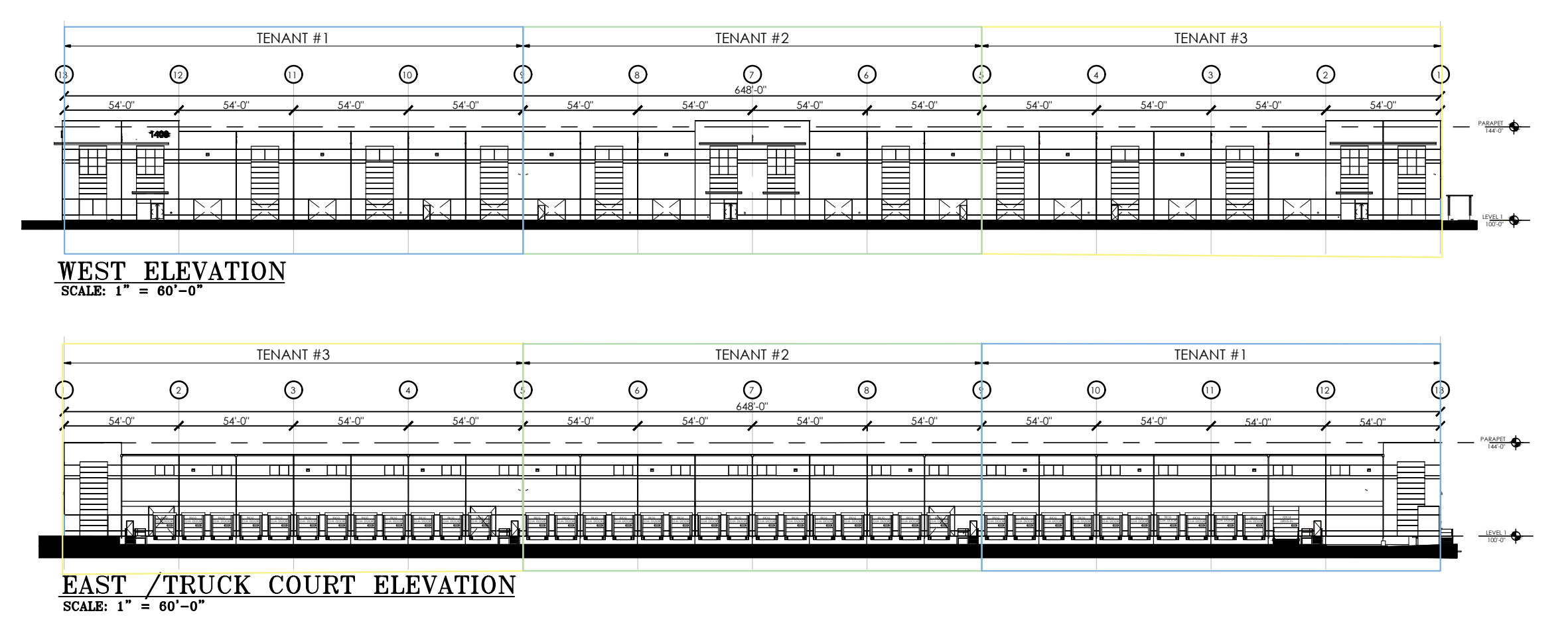
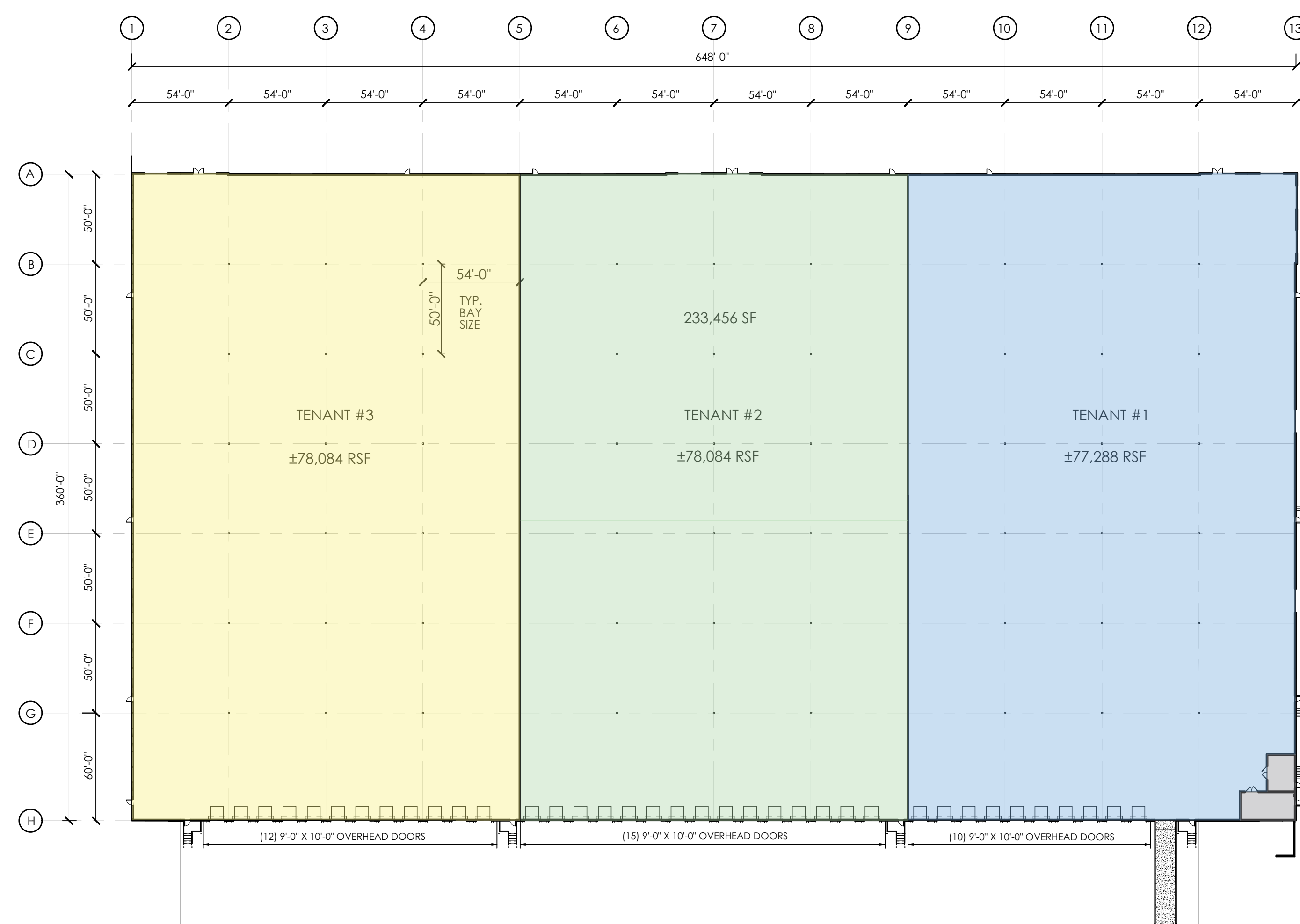


TENANT #1:  
Area: 116,330 RSF  
Dock Doors: 17  
Drive-In Door w/Ramp: 1 (+1 future/knock-out)

TENANT #2:  
Area: 117,126 RSF  
Dock Doors: 20  
Drive-In Door: 2 future/knock-outs

## TWO-TENANT LAYOUT

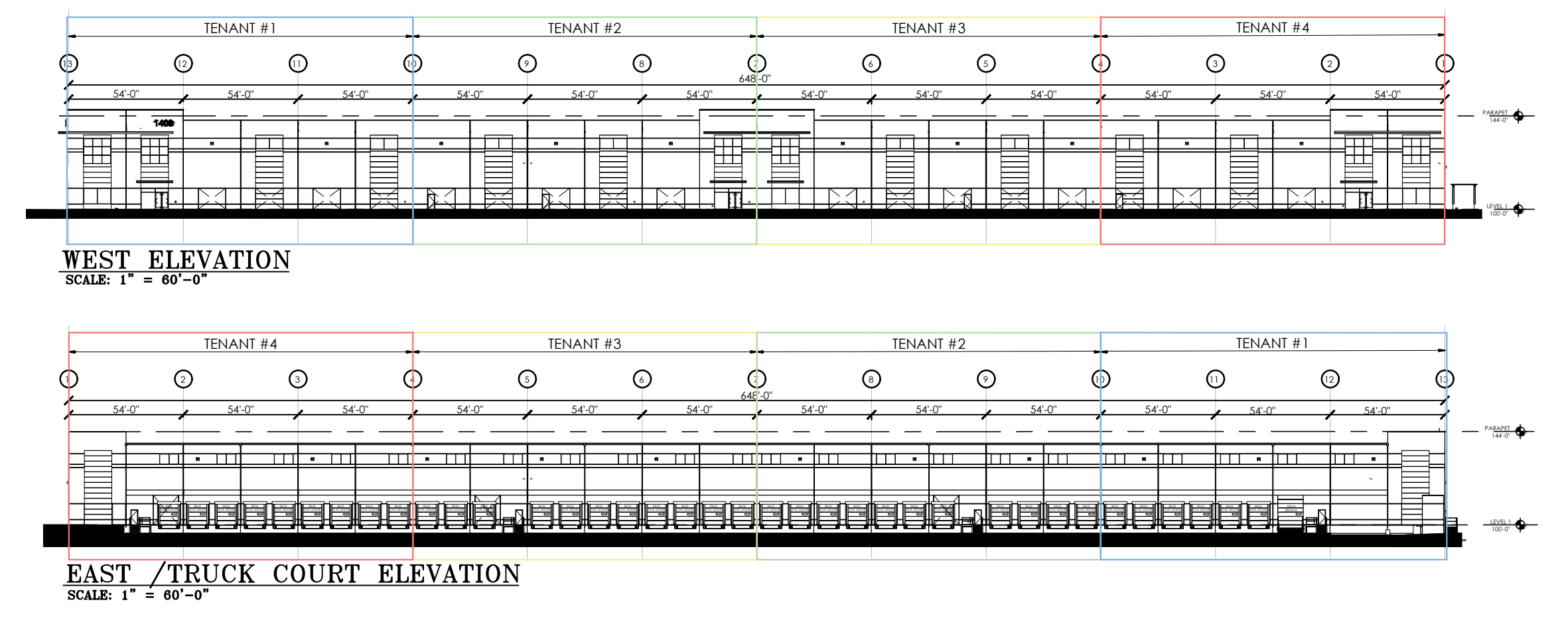
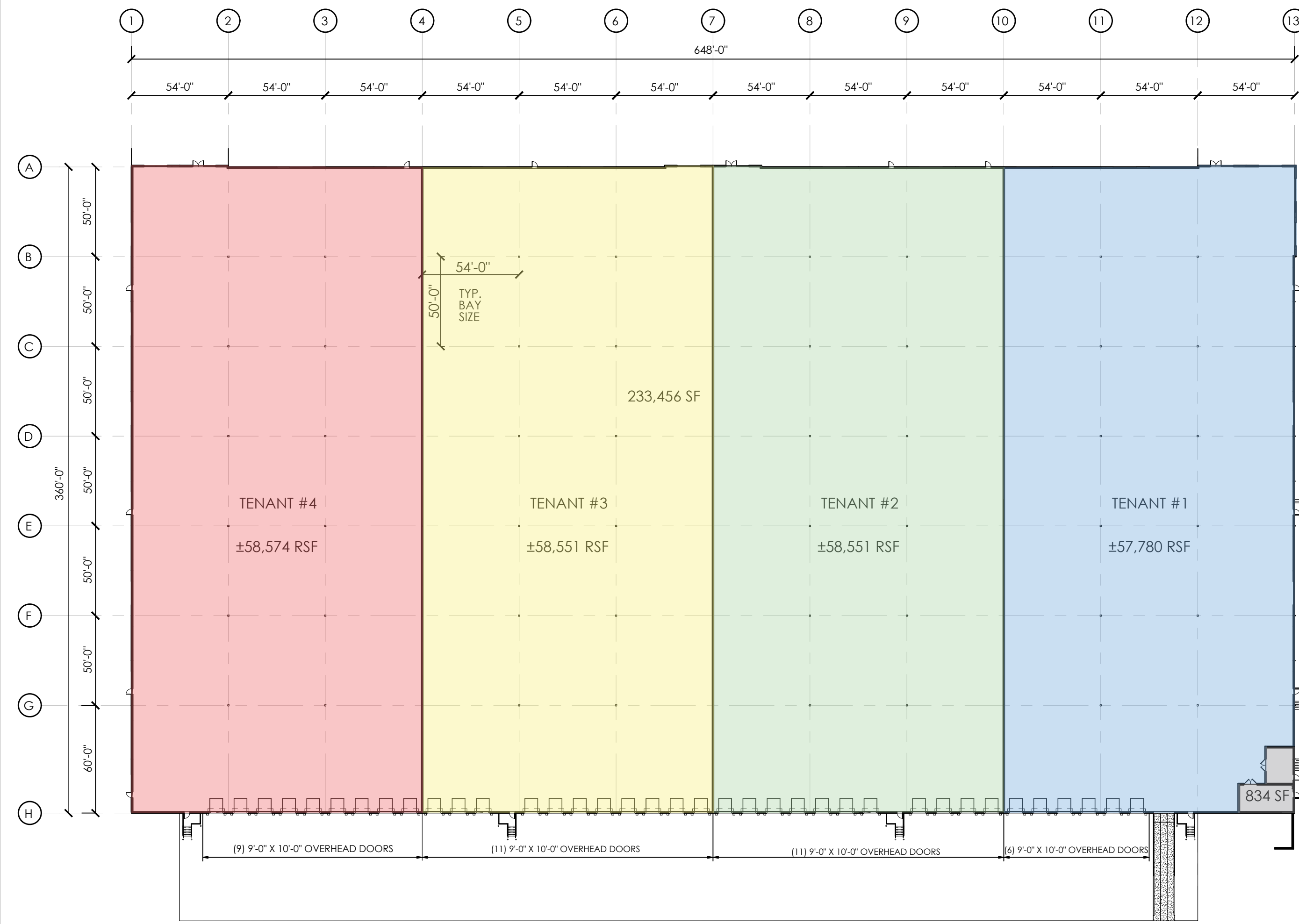


TENANT #1:  
Area: 77,288 RSF  
Dock Doors: 10  
Drive-In Door w/Ramp: 1

TENANT #2:  
Area: 78,084 RSF  
Dock Doors: 15  
Drive-In Door: 1 future/knock-out

TENANT #3:  
Area: 78,084 RSF  
Dock Doors: 12  
Drive-In Door: 2 future/knock-out

## THREE-TENANT LAYOUT



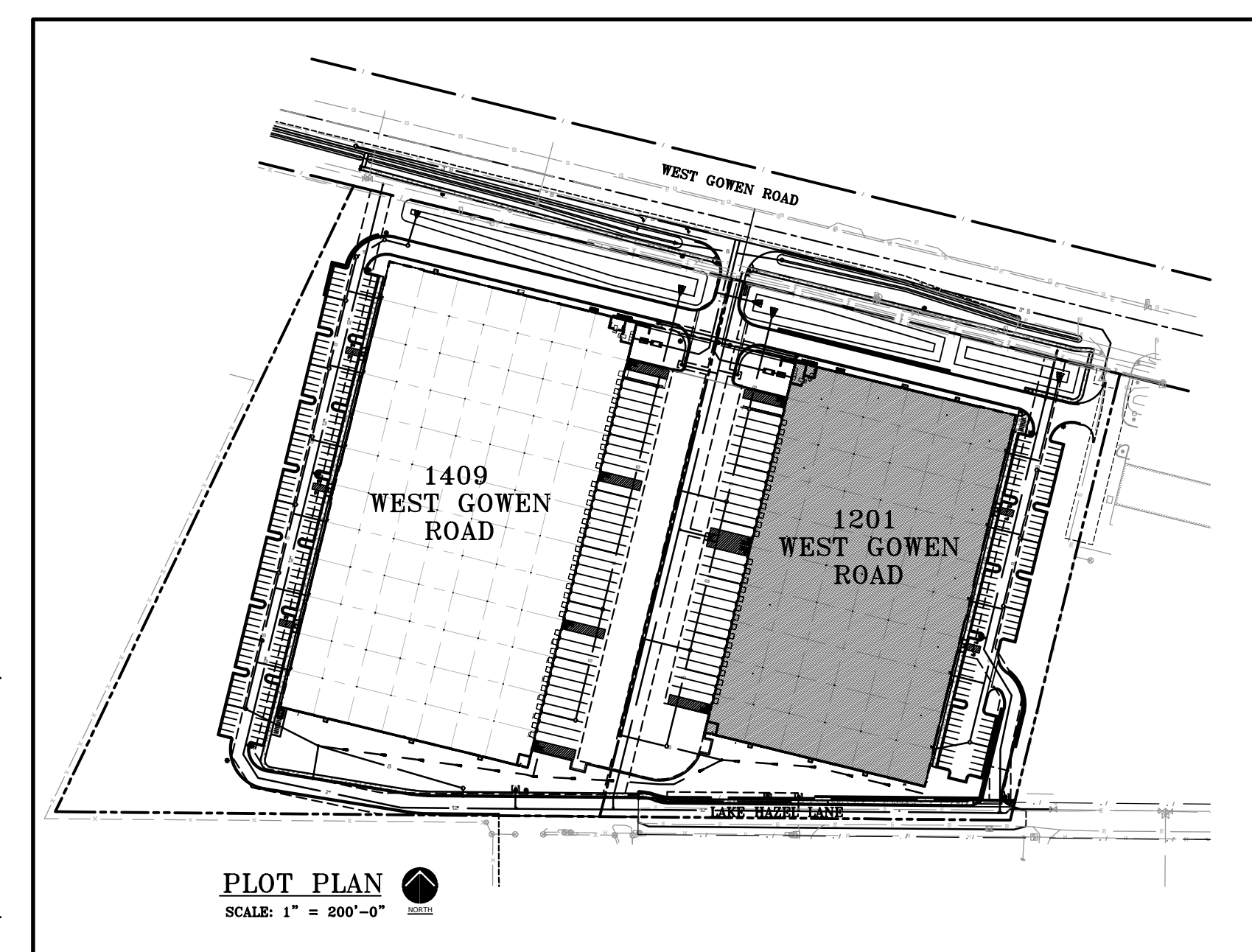
TENANT #1:  
Area: 57,780 RSF  
Dock Doors: 6  
Drive-In Door w/Ramp: 1

TENANT #2:  
Area: 58,551 RSF  
Dock Doors: 11  
Drive-In Door: 0

TENANT #3:  
Area: 58,551 RSF  
Dock Doors: 11  
Drive-In Door: 1 future/knock-out

TENANT #4:  
Area: 58,574 RSF  
Dock Doors: 9  
Drive-In Door: 1 future/knock-out

## FOUR-TENANT LAYOUT



REV. NO.	REV. DATE	DESCRIPTION	PROJECT NO.
		Sudwest Boise, LLC at <b>HIGH WEST BUSINESS PARK</b> 1409 West Gowen Road, Boise, ID	1409 WGR
		Marketing Plan: MULTI-TENANT LAYOUT OPTIONS	DRAWN BY MGD SCALE AS NOTED DATE 04-15-2025
			MP-2-A

