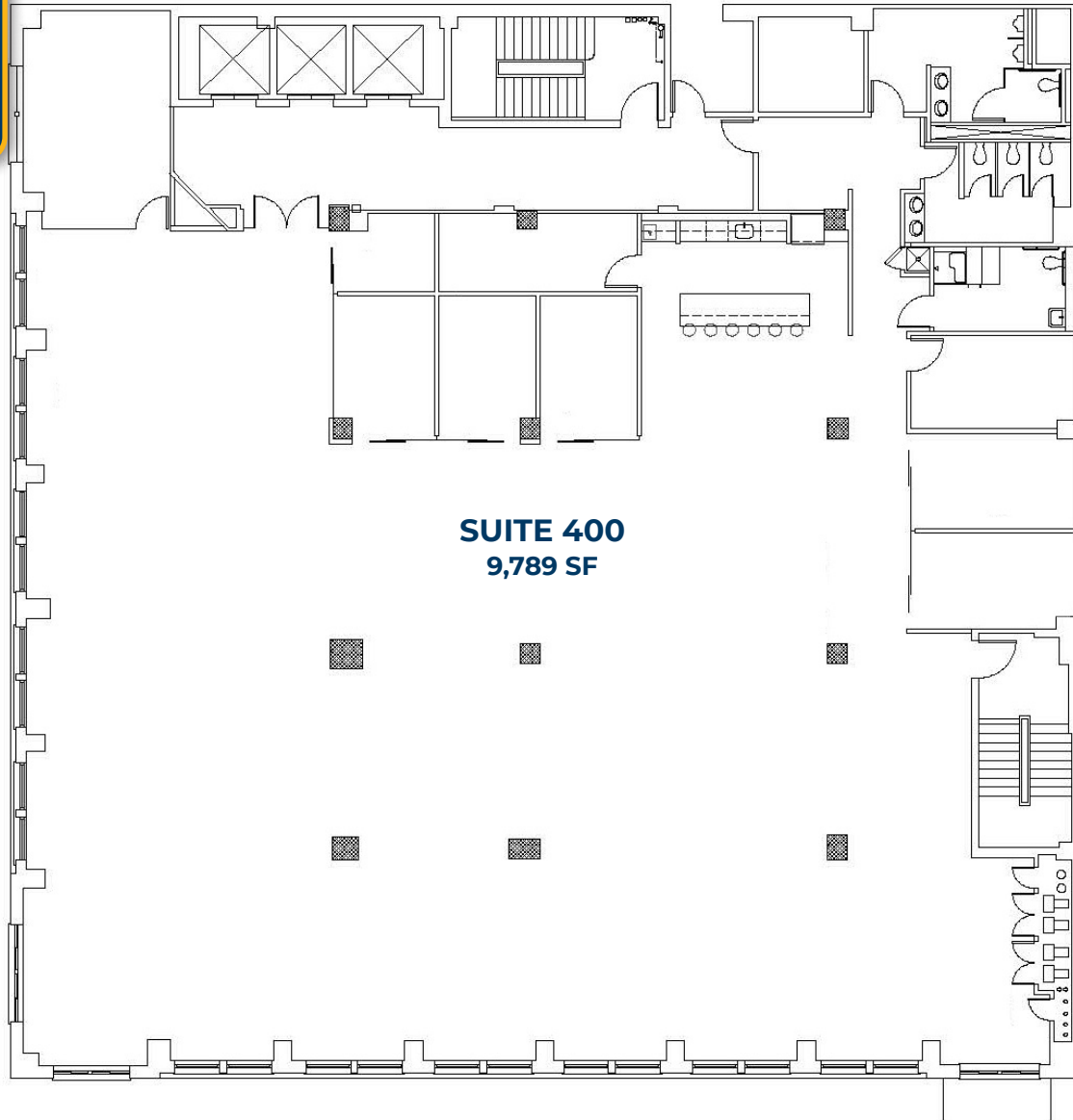




# FLOOR PLAN



LEASE INFORMATION	
Building	The Cascade Building
Address	520 SW 6th Ave, Portland, OR 97204
Floor	4th
Suite	400
Total SF	9,789

**MCCOY DOERRIE, SIOR**  
Senior Vice President  
503-523-7751  
mccoy@capacitycommercial.com

**JEFF FALCONER, SIOR**  
Principal  
503-542-4346  
jeff@capacitycommercial.com

**GABRIEL BEHRMANN**  
Senior Associate Broker  
971-237-2458  
gabriel@capacitycommercial.com

