



# OPES COMMERCIAL REAL ESTATE



11340 W 135<sup>th</sup> St. Overland Park, KS 66221



## For Lease

\$25/SF + NNN \$9.46/SF

1,915+/- SF

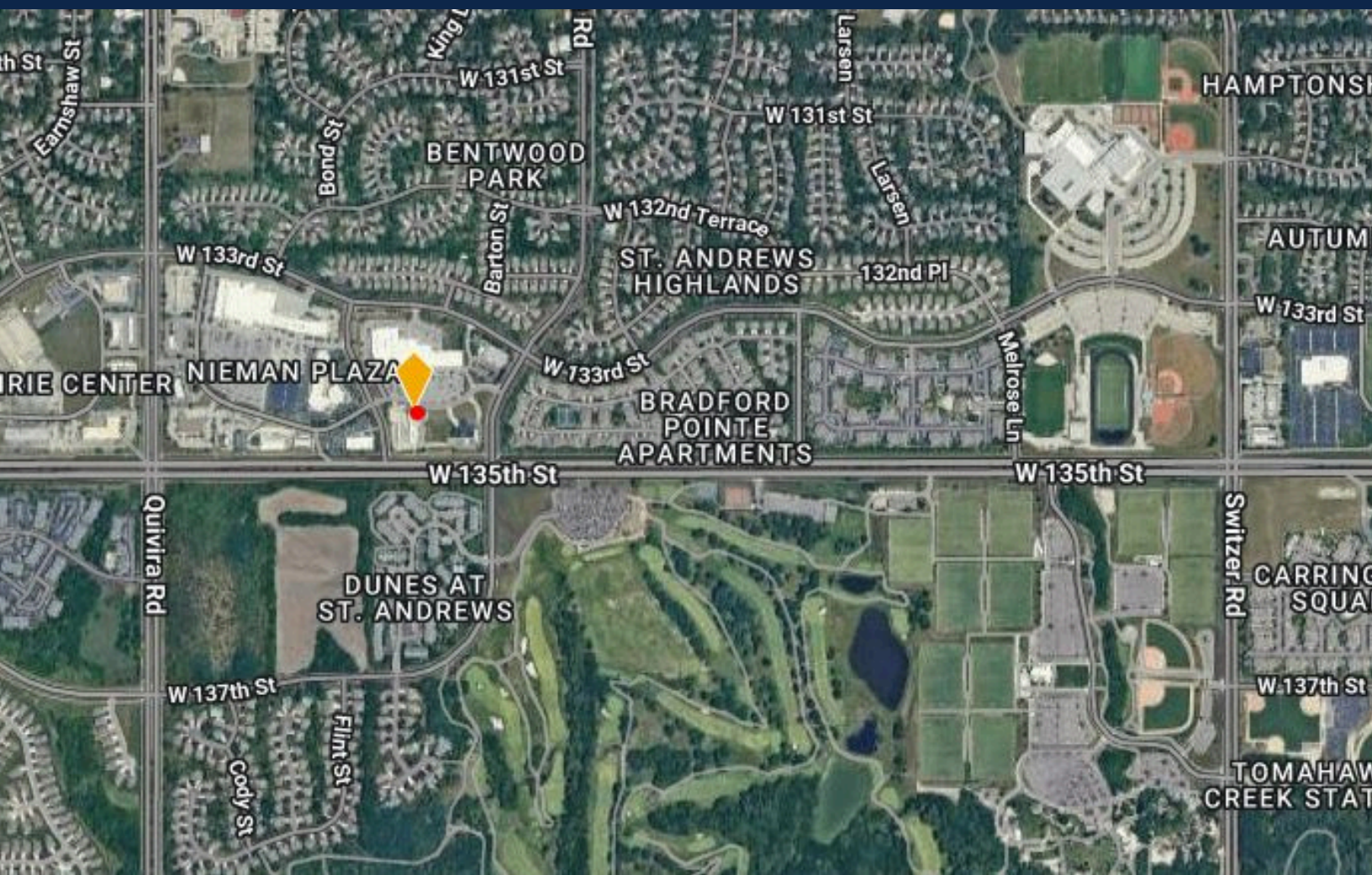
Joanna Cuda, Associate

816-541-2380

[joanna@opescre.com](mailto:joanna@opescre.com)

\*Although every reasonable effort is made to present current and accurate information, Opes Commercial Real Estate makes no guarantees of any kind\*





OPESCRE.COM