

# ARCHIBALD FREEWAY CENTER

2260 S ARCHIBALD AVE & 2580 E PHILADELPHIA • ONTARIO, CA



# ARCHIBALD FREEWAY CENTER

2260 S ARCHIBALD AVE & 2580 E PHILADELPHIA • ONTARIO, CA

PHILADELPHIA ST



Address	Suites	Total Size SF	Office SF	Lease Rate PSF / NNN	Comments
2260 S Archibald Ave	A	±6,784	±1,089	TBD/ \$0.51Opex	1 DH / 1 GL
2260 S Archibald Ave	D	±6,634	±826	TBD/ \$0.51 Opex	1 DH / 1 GL
2580 E Philadelphia Ave	E	±7,766	±1,081	TBD/ \$0.52 Opex	1 DH / 1 GL

# ARCHIBALD FREEWAY CENTER



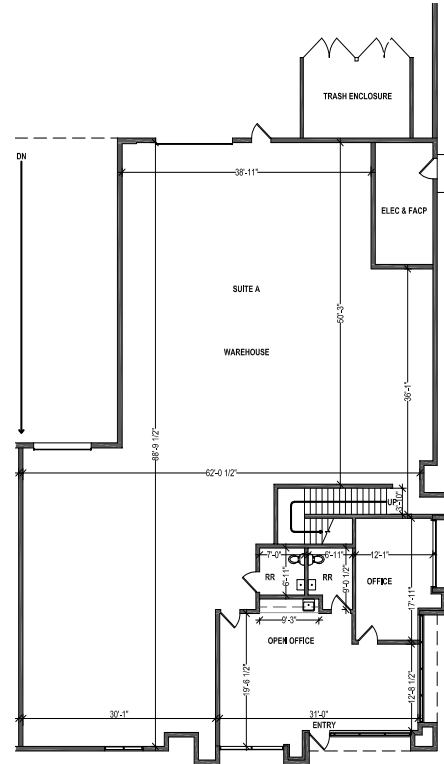
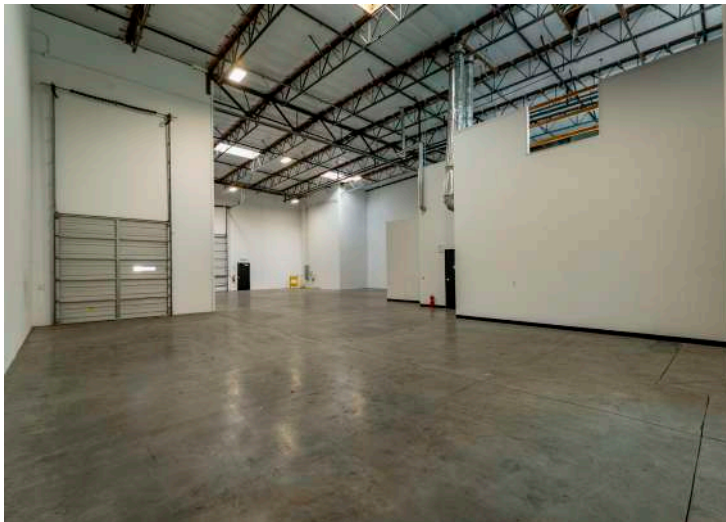
Situated along S. Archibald Ave, the Archibald Freeway Center offers excellent visibility and accessibility in a 69,467 square-foot business park. This professionally managed, high-image property provides leasing options ranging from 6,184 to 11,168 square feet, with each suite including a dock high door and ground level door. Office space and mezzanine space for light storage all included within the square footage of each suite.

The business park is ideally located near Ontario International Airport, with convenient access to the Pomona (60), San Bernardino (I-10), and Ontario (I-15) freeways. Suites feature a clear height of 25 feet (verification needed), along with dock-high and ground-level loading options. Ample surface parking is available, and the entire park is fire sprinklered. Zoned for General Industrial use by the City of Ontario, this property is perfectly suited for a variety of business operations.

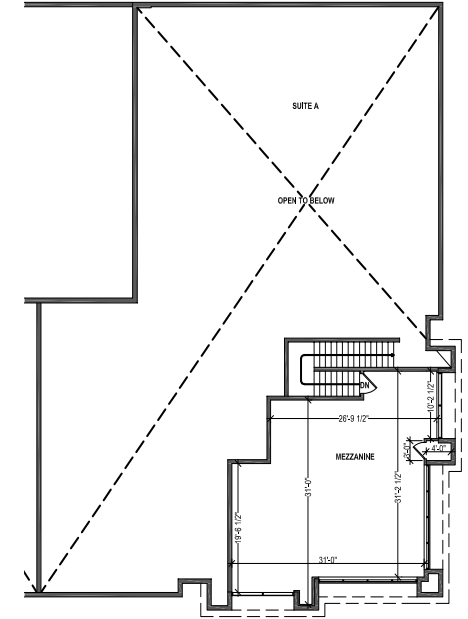


# ARCHIBALD FREEWAY CENTER

2260 S ARCHIBALD AVE, STE A • ONTARIO, CA



First Floor



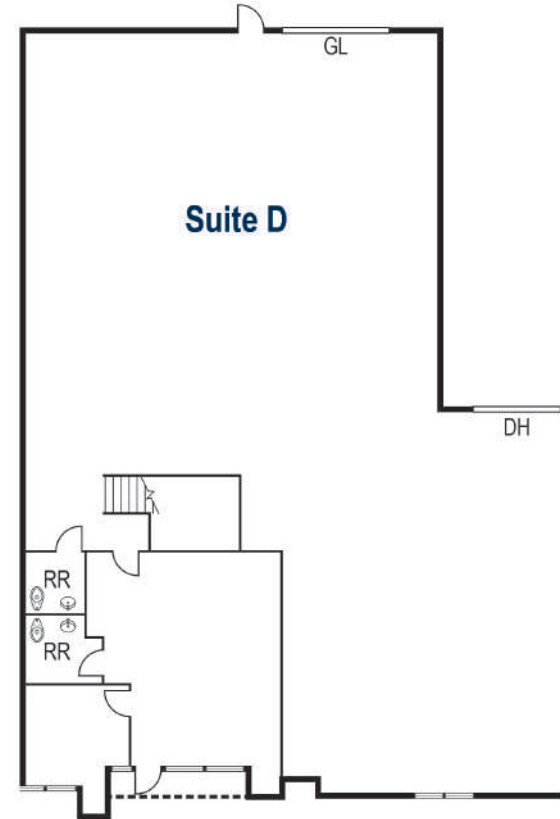
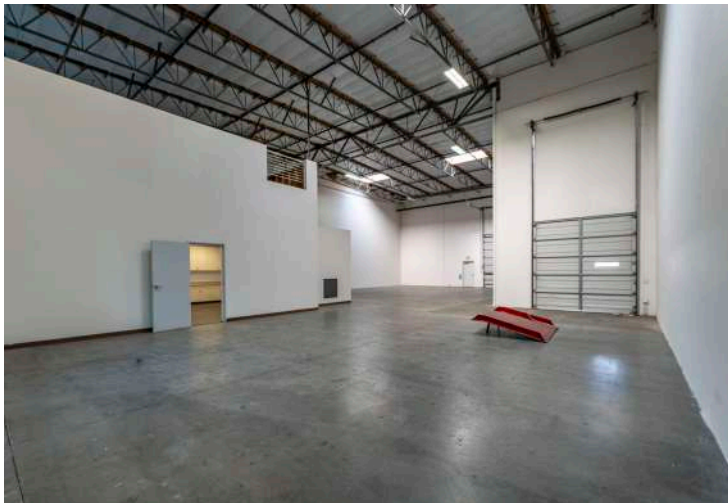
Mezzanine

## PROPERTY HIGHLIGHTS

- ±6,784 SF Total Square Footage
- 25' Minimum Clear Height
- ±1,089 SF Office Area
- Two (2) Private Restrooms
- Fully Sprinklered
- 1 Dock High
- 1 Ground Level Door
- 200 amp, 120/208v Electrical

# ARCHIBALD FREEWAY CENTER

2260 S ARCHIBALD AVE, STE D • ONTARIO, CA

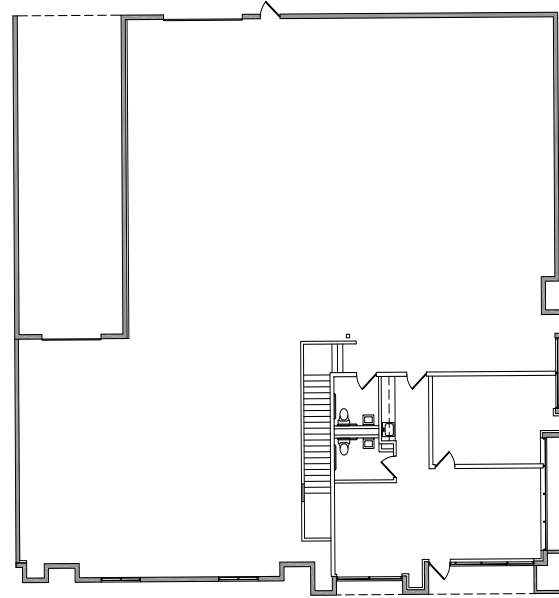


## PROPERTY HIGHLIGHTS

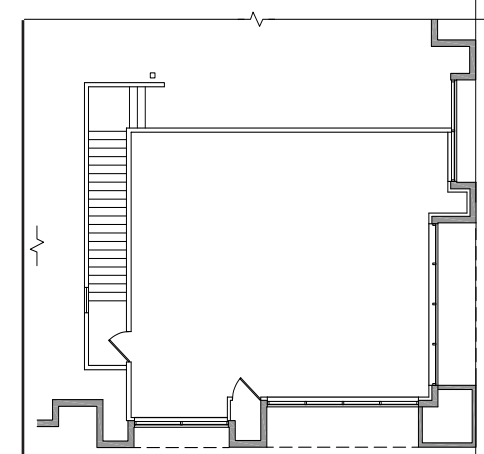
- ±6,634 SF Total Square Footage
- 25' Minimum Clear Height
- ±826 SF Office Area
- Two (2) Private Restrooms
- Fully Sprinklered
- 1 Dock High
- 1 Ground Level Door
- 200 amp, 120/208v Electrical

# ARCHIBALD FREEWAY CENTER

2580 E PHILADELPHIA ST, STE E • ONTARIO, CA



First Floor



Mezzanine

## PROPERTY HIGHLIGHTS

- ±7,766 SF Total Square Footage
- 25' Minimum Clear Height
- ±1,081 SF Office Area
- Two (2) Private Restrooms
- Fully Sprinklered
- 1 Dock High
- 1 Ground Level Door
- 200 amp, 120/208v Electrical

# ARCHIBALD FREEWAY CENTER



**RYAN MOORE, SIOR**  
Executive Vice President, Partner  
rmoore@voitco.com  
909.545.8011  
Lic. #01821438

**RYAN SHATTUCK**  
Associate  
rshattuck@voitco.com  
909.545.8013  
Lic. #02228315

**DYLAN SHERSHENOVICH**  
Associate  
dshershovich@voitco.com  
714.935.2312  
Lic. #02151453

**Voit**  
REAL ESTATE SERVICES

1 Miles  
to 60 Freeway



2 Miles  
to Interstate 15

5 Miles  
to 10 Freeway

3 Miles  
to Ontario International Airport



40 Miles  
to John Wayne Airport

58 Miles  
to LAX Airport



57 Miles  
to the Ports of  
Los Angeles &  
Long Beach

2400 E. Katella Avenue, Suite 750  
Anaheim, CA 92806

714.978.7880 | 714.978.9431 Fax  
Lic #01991785 | www.voitco.com

Licensed as Real Estate Salespersons by the DRE. The information contained herein has been obtained from sources we deem reliable. While we have no reason to doubt its accuracy, we do not guarantee it. ©2019 Voit Real Estate Services, Inc. All Rights Reserved. Lic. #01991785