

G SANITARY MANHOLE
TOP: 42.36
INVERTS INACCESSIBLE

TYPICAL SPOT
ELEVATION

00' W 46.1' X

234.70'

L = 42.90'

STS-1
TOP = 41.90'
HDPE = 38.77'

L = 42.85'

STS-2
TOP = 41.96'
HDPE = 37.97'
HDPE = 37.98'

ALL = 42.91'

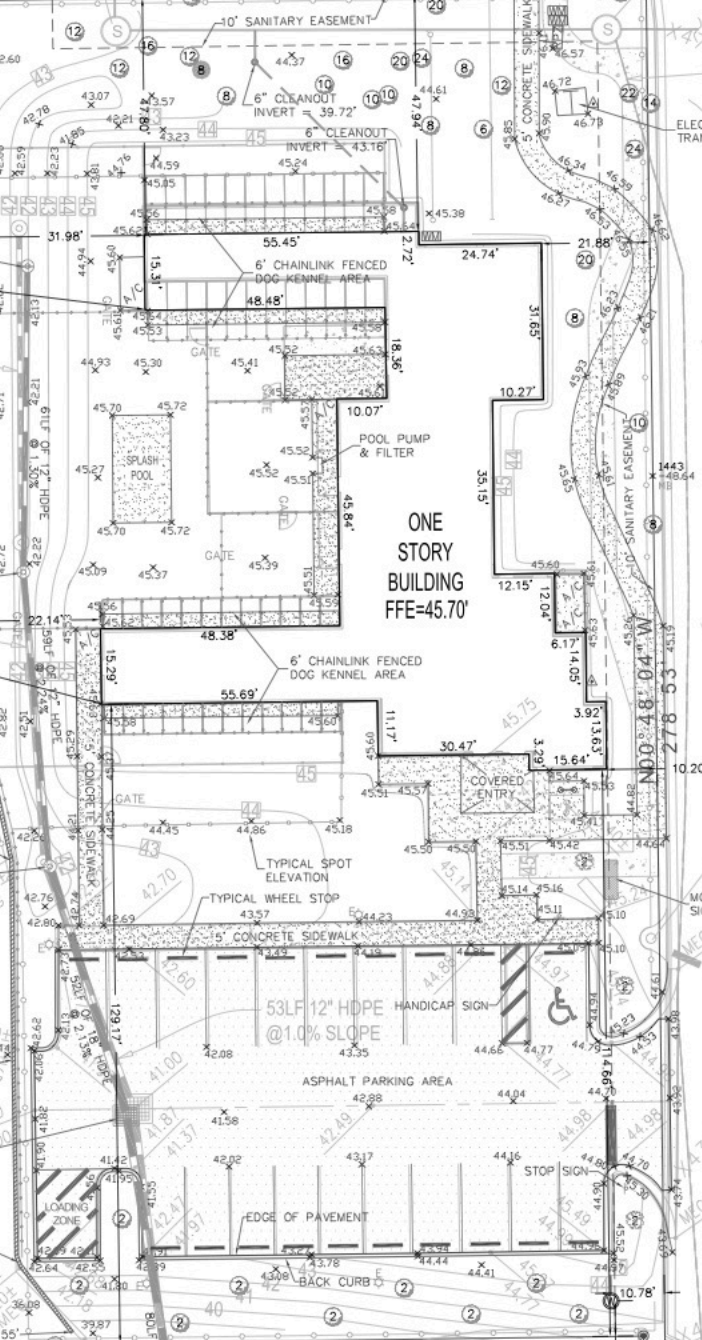
STS-3
TOP = 42.13'
HDPE = 36.64'
HDPE = 36.65'

LLA PLAZA

STS-2
TOP = 41.09'
HDPE = 35.49'
HDPE = 35.53'

TOP OF WALL = 42.88'

TOP OF WALL = 39.55'



N89°11'56"E

166.56'

EX TO E
MONUMENT
SIGN

MEG 43.9

MEG 43.5

MEG 43.19