

# 424 W 800 N OREM, UT 84057



FOR LEASE

## PROPERTY DETAILS

424 W 800 N OREM, UT, 84057

- Suite 201
- 4,772 RSF
- \$16 PSF/NNN
- ADA Accessible
- Conveniently located minutes from I-15
- Ample Parking
- Flexible space plan including private offices, meetings rooms, bullpens, and kitchen/breakroom
- TI allowance available
- Building Signage Available



**NIC WOODS**  
nic@summitutahcre.com  
direct: 801.719.4309  
office: 801.435.5005  
[View Profile](#)

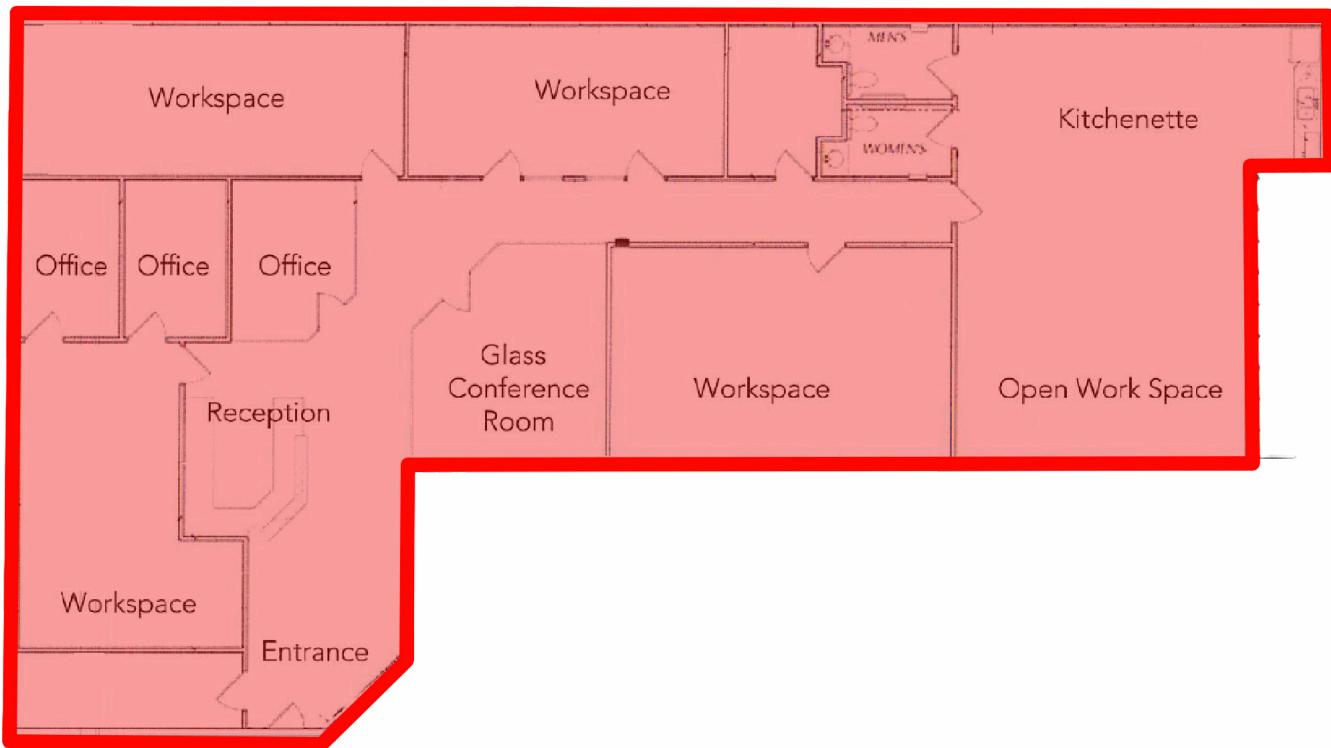
**HAYLIE DARLING**  
haylie@summitutahcre.com  
direct: 801.390.5882  
office: 801.435.5005  
[View Profile](#)

FULL SERVICE COMMERCIAL REAL ESTATE 1875 S STATE ST., SUITE 1000, PO BOX 970432, OREM, UT 84097

# 424 W 800 N OREM, UT 84057

**SUITE 201**  
**4,772 SF**

**FLOOR PLAN**



**NIC WOODS**

nic@summitutahcre.com

direct: 801.719.4309

office: 801.435.5005

*[View Profile](#)*

**HAYLIE DARLING**

haylie@summitutahcre.com

direct: 801.390.5882

office: 801.435.5005

*[View Profile](#)*

FULL SERVICE COMMERCIAL REAL ESTATE 1875 S STATE ST., SUITE 1000, PO BOX 970432, OREM, UT 84097

This statement with the information it contains is given with the understanding that all negotiations relating to the purchase, renting or leasing of the property described above shall be conducted through this office.



**NIC WOODS**

nic@summitutahre.com

direct: 801.719.4309

office: 801.435.5005

*[View Profile](#)*

**HAYLIE DARLING**

haylie@summitutahre.com

direct: 801.390.5882

office: 801.435.5005

*[View Profile](#)*

**FULL SERVICE COMMERCIAL REAL ESTATE 1875 S STATE ST., SUITE 1000, PO BOX 970432, OREM, UT 84097**

This statement with the information it contains is given with the understanding that all negotiations relating to the purchase, renting or leasing of the property described above shall be conducted through this office.