

FOR SUBLEASE



3600 Glenwood Avenue, Suite 120
Raleigh, NC 27612





PROPERTY FEATURES

PROPERTY TYPE	Office
BUILDING SIZE	81,090 SF
Available Space	1,900 - 3,871 RSF
PRICE	Contact Broker
TERM	Expires November 30, 2027
YEAR BUILT	1985/Renov. 2009
FLOORS	3
PARKING	4/1000
FFE NEGOTIABLE	



**CAPITAL
ASSOCIATES.**

HENRY NICHOLSON

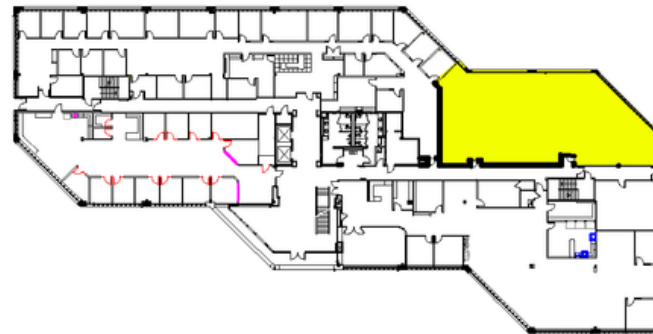
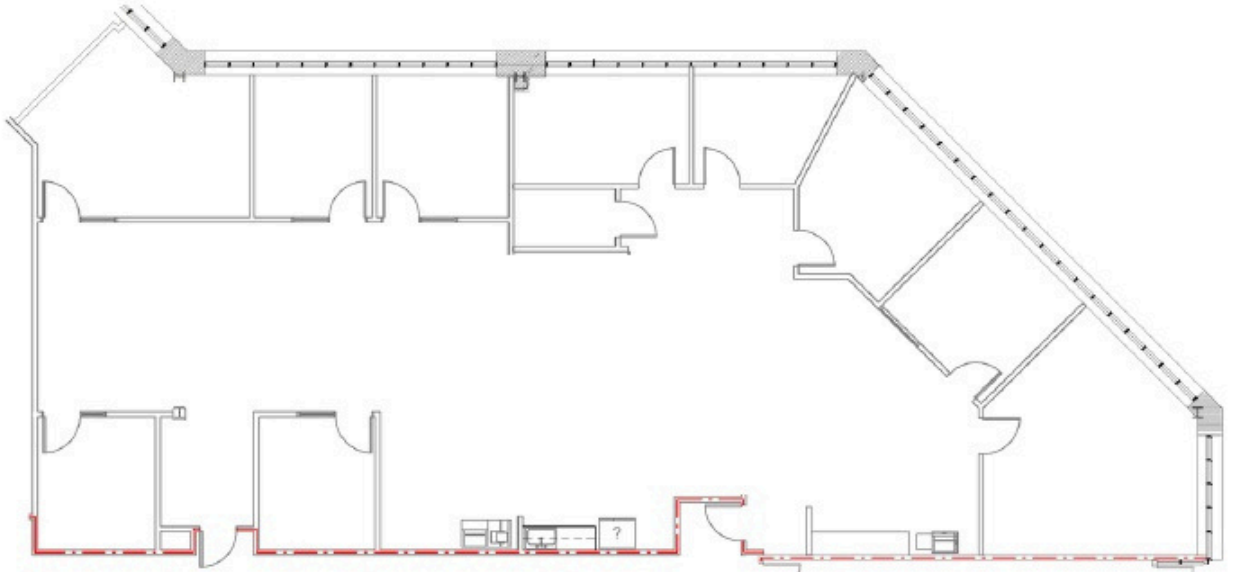
919.417.3570

hnicholson@capitalassociates.com

AVAILABLE

SUITE 120

1,900 - 3,871 RSF



**CAPITAL
ASSOCIATES.**

HENRY NICHOLSON

919.417.3570

hnicholson@capitalassociates.com

3600 GLENWOOD AVENUE | SUITE 120

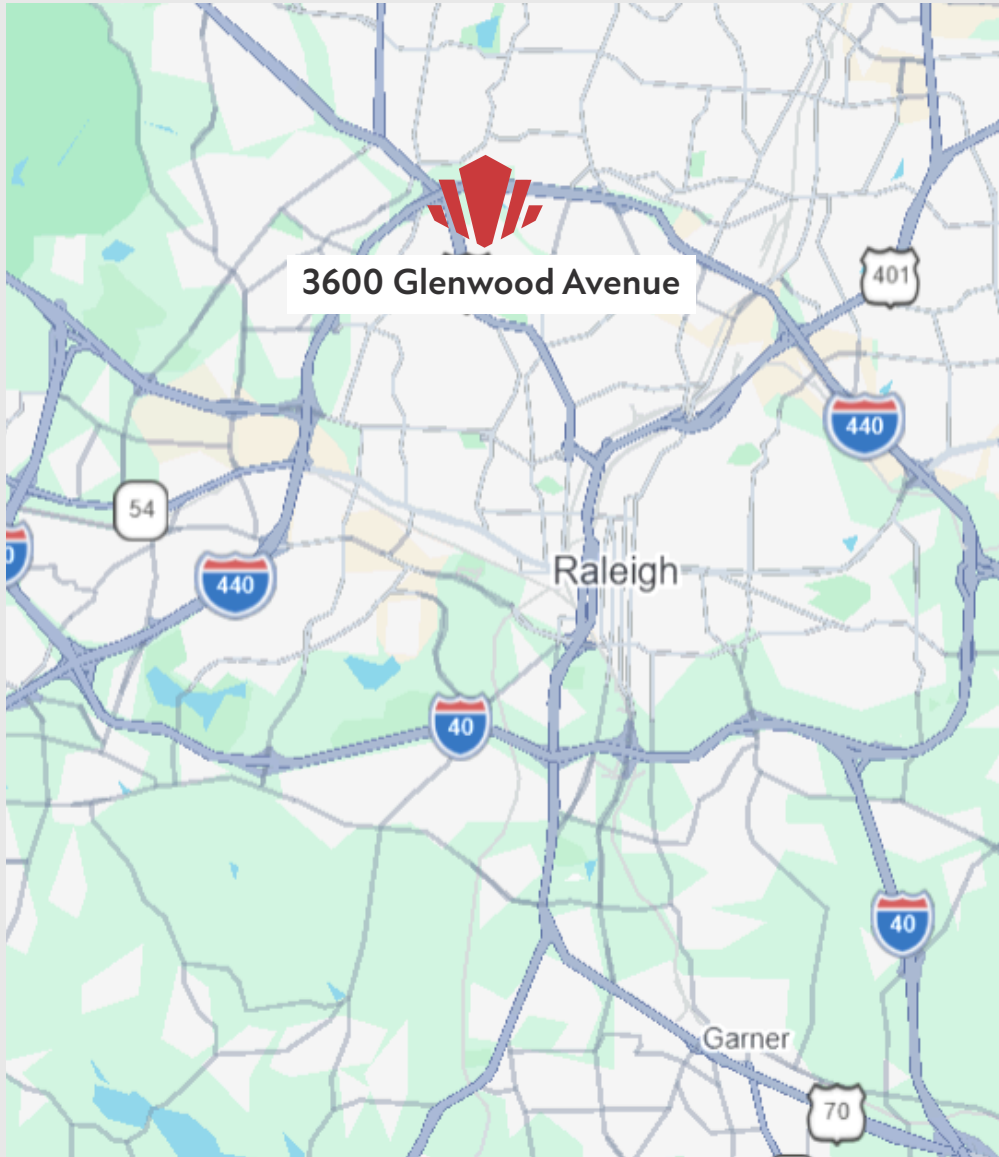
Raleigh, NC 27612



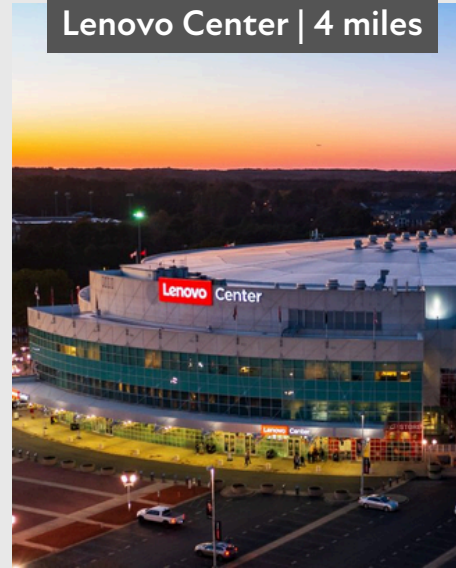
PROPERTY HIGHLIGHTS

- Prime Inside-the-Beltline location at I-440 & Glenwood Avenue
- Direct access with signalized (stoplight) entrance
- Excellent visibility along one of Raleigh's most traveled corridors
- Prominent frontage on Glenwood Avenue
- Free, ample on-site parking
- Minutes to Crabtree Valley Mall, Downtown Raleigh, and premier dining & retail
- Convenient access to RDU International Airport and major employment hubs

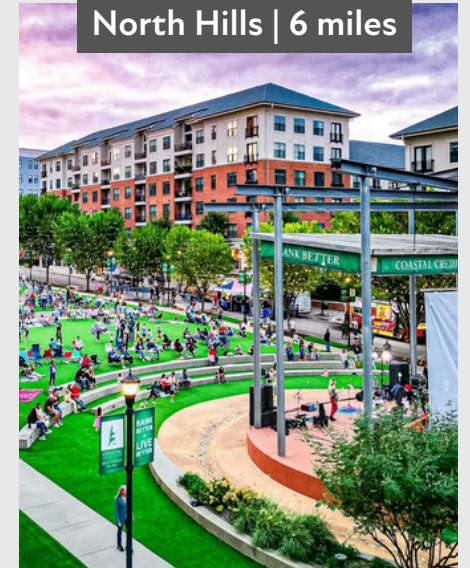
AT THE CENTER OF RALEIGH



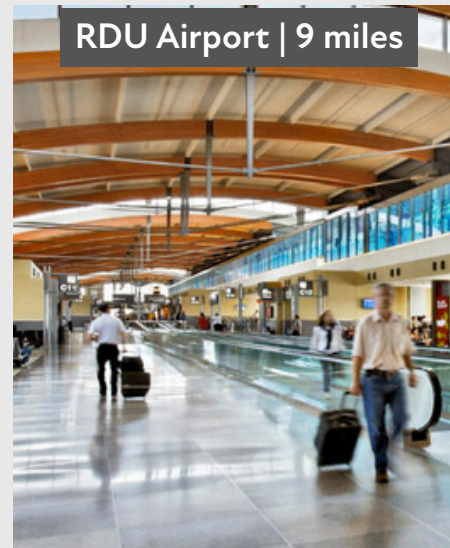
Lenovo Center | 4 miles



North Hills | 6 miles



RDU Airport | 9 miles



Village District | 3 miles



EXPLORE NEARBY



CRABTREE VALLEY MALL

11 minute drive

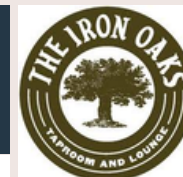


Abercrombie & Fitch



GLENWOOD PLACE

10 minute drive



Village Juice & Kitchen

Glenwood Avenue



3600 GLENWOOD AVENUE | SUITE 120

Raleigh, NC 27612



Abundant Natural Light

