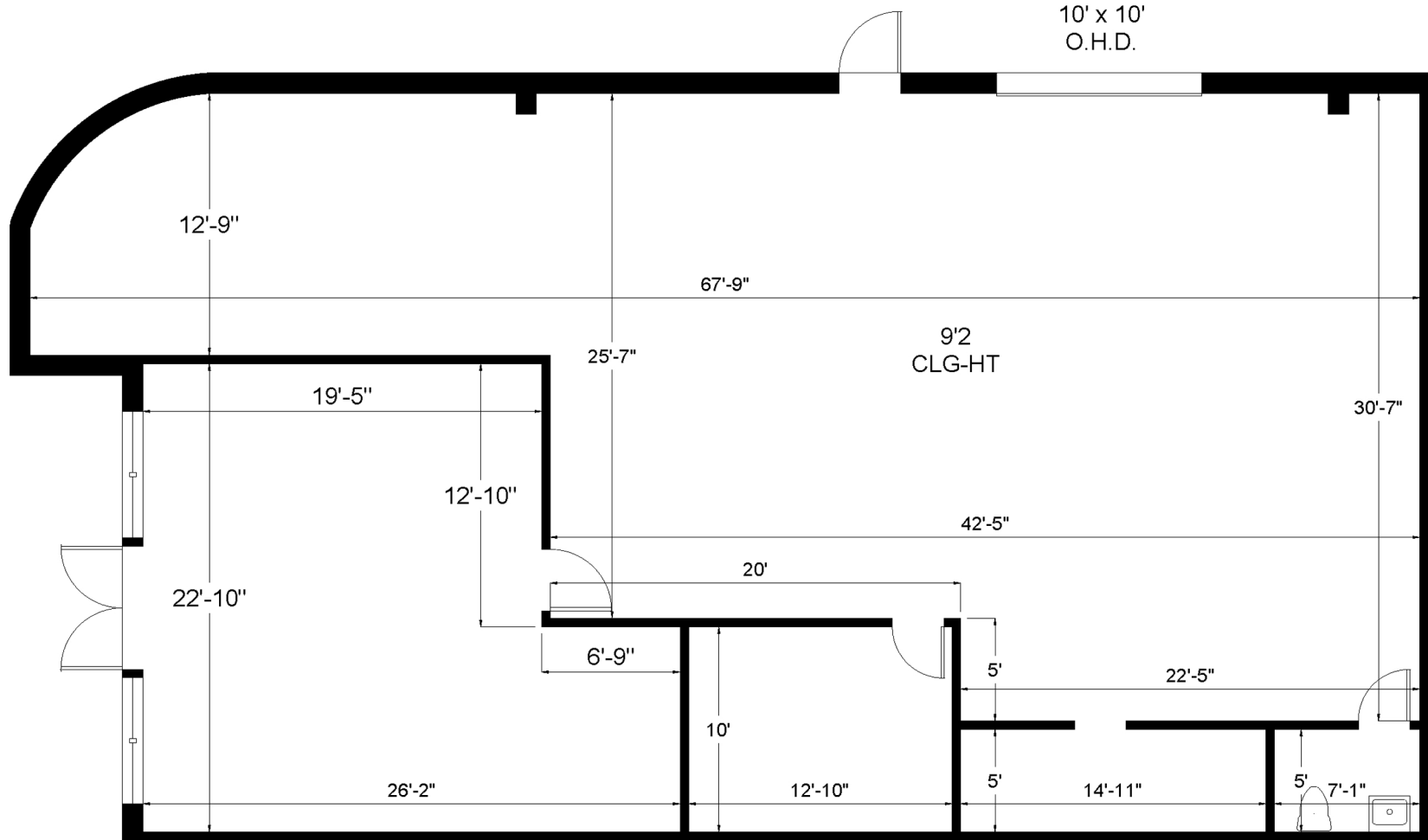


PALM PLAZA

1951 W Copans Road, Unit 12 | Pompano Beach, FL 33069



Office - 511 Sq. Ft.
Warehouse - 1,904 Sq. Ft.

Rentable Area - 2,415 Sq. Ft.
www.LevyRealtyAdvisors.com



Natalie Delisle | Property Manager | 954.478.1293 | Natalie@levyrai.com
4901 NW 17th Way, Suite 103 | Ft. Lauderdale, FL 33309