



2901 S. Kansas

2901 S. Kansas Wichita, Kansas 67216

Property Highlights

- 9,896 SF building
- 4,749 SF office space
- 0.96 acres (41,879 SF) Lot
- Ceiling height: 14'
- Wet sprinkler system
- Fenced parking and storage
- 3 drive-in doors
- Zoned: Limited Industrial
- Lease Rate: \$5.50 PSF NNN

Offering Summary

Lease Rate:	\$5.50 SF/yr (NNN)
Building Size:	9,896 SF
Office Space:	4,749 SF
Warehouse Space:	5,147 SF
Lot Size:	0.96 Acres

For More Information

Scott Salome, SIOR

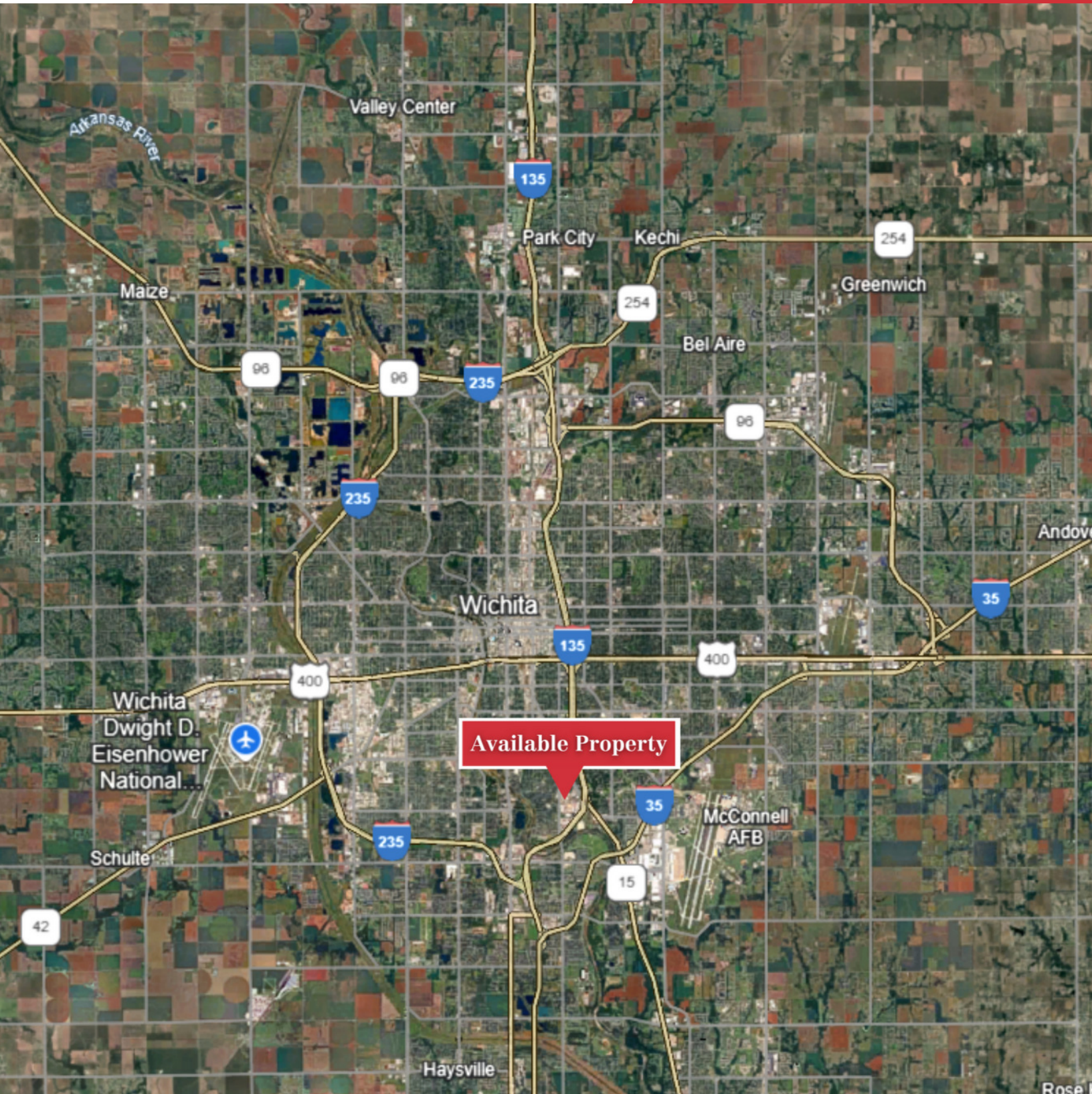
O: 316 847 4903
ssalome@naimartens.com

For Lease

9,896 SF | \$5.50 SF/yr

Industrial Space





Available Property