

FISHER HALL - 3540 S. BOULEVARD, 3RD FLOOR

EDMOND, OK 73013



## LOCATION DESCRIPTION

Fisher Hall is well located in a tremendous area of growth in the popular suburb of Edmond, Oklahoma. The area is becoming increasingly popular with office users due to its proximity to upper and middle management personnel as well as its accessibility to Oklahoma City. Its location is well served from the east and west by the Kilpatrick Turnpike and Memorial Road and from the south by Eastern Avenue and Broadway Extension just one mile to the west.

## PROPERTY HIGHLIGHTS

- Beautiful Class A Building
- Overlooks a Small Lake
- Free On-Site Parking

## OFFERING SUMMARY

<b>Available SF Suite 300:</b>	±20,582 RSF
<b>Lease Rate:</b>	\$22.00 SF/yr (Full Service) with 3% annual increases
<b>Building Size:</b>	60,441 SF
<b>Year Built:</b>	2006
<b>Market:</b>	Edmond

### TOM FIELDS

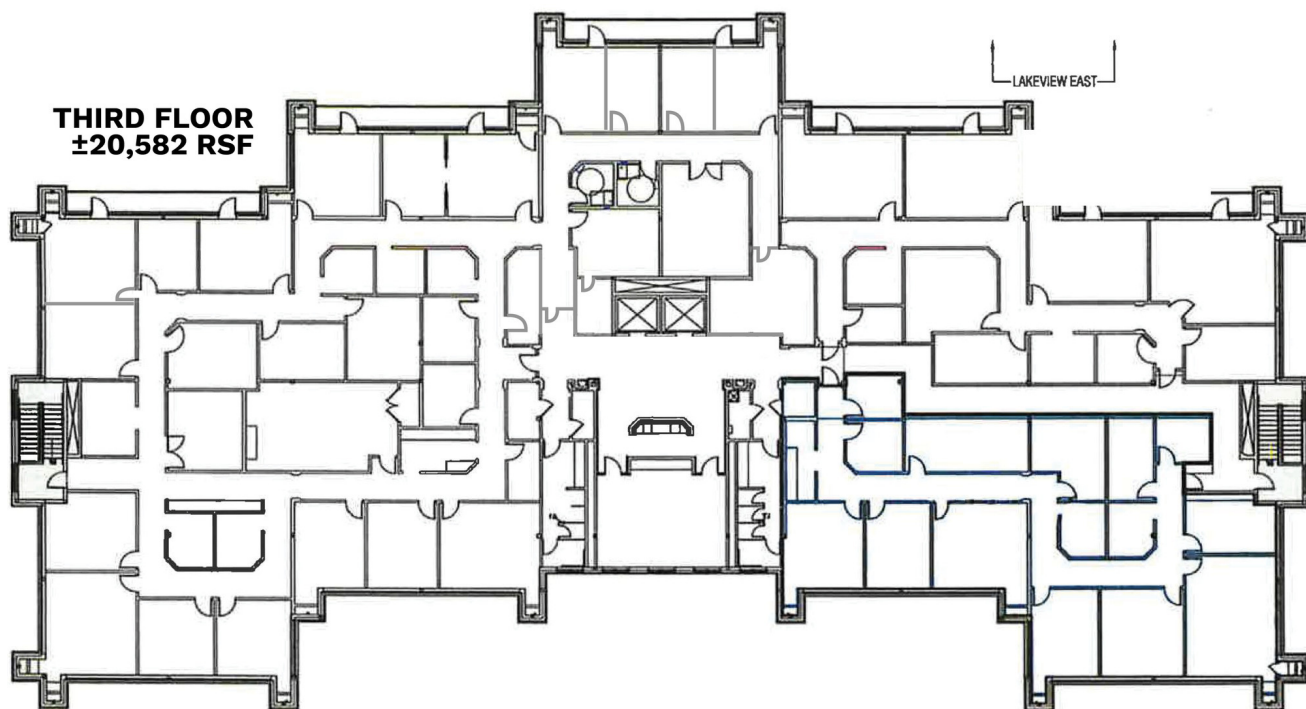
tfields@priceedwards.com  
O: 405.239.1205

### CRAIG TUCKER

ctucker@priceedwards.com  
O: 405.239.1202 C: 405.641.3218

FISHER HALL - 3540 S. BOULEVARD, 3RD FLOOR

EDMOND, OK 73013



## TOM FIELDS

tfields@priceedwards.com  
O: 405.239.1205

## CRAIG TUCKER

ctucker@priceedwards.com  
O: 405.239.1202 C: 405.641.3218