

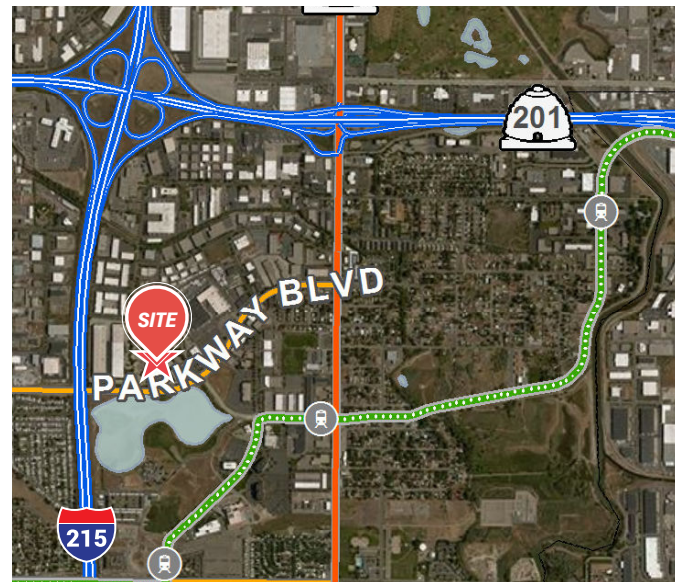


2250 WEST PARKWAY BLVD WEST VALLEY CITY, UTAH  
**WASHINGTON BUILDING**



#### PROPERTY HIGHLIGHTS

- Lease Rate: \$18.50 Full Service
- 1st Floor: 3,636 RSF
- On-site cafeteria
- On-site fitness center with full indoor basketball court
- On-site auditorium with seating for up to 200 people
- Ample parking

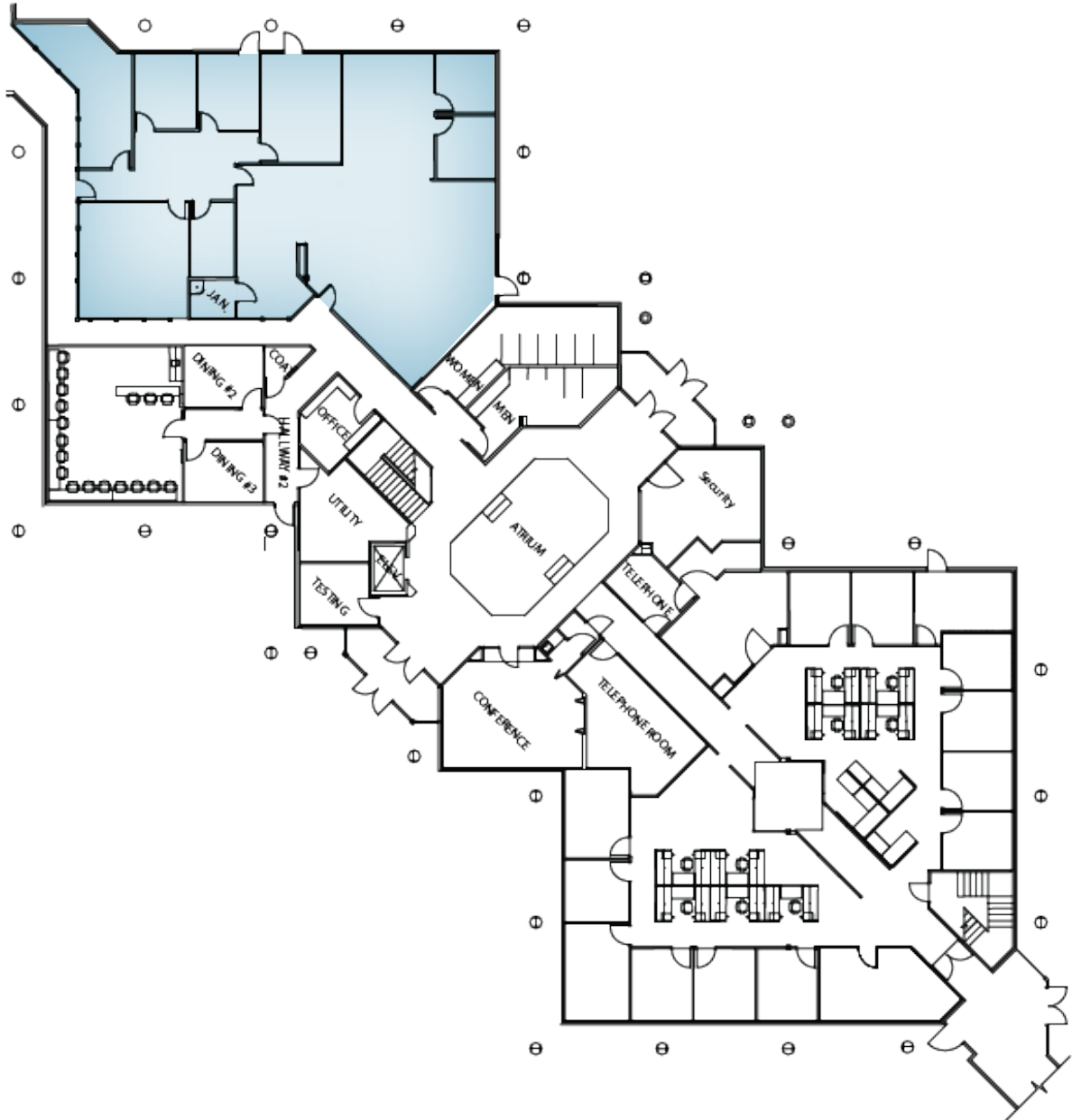


 **Chris Kirk, SIOR**  
801.947.8300  
[chris.kirk@cbcadvisors.com](mailto:chris.kirk@cbcadvisors.com)


 **Travis Yates**  
801.947.8300  
[travis.yates@cbcadvisors.com](mailto:travis.yates@cbcadvisors.com)



First Floor - 3,636 RSF



 **Chris Kirk, SIOR**  
801.947.8300  
chris.kirk@cbcadvisors.com

 **Travis Yates**  
801.947.8300  
travis.yates@cbcadvisors.com