



## VIDEO

### Property Description

Second-generation medical office space.

Space Availability Details:  
1,929 SF - Building 57, Suite 3

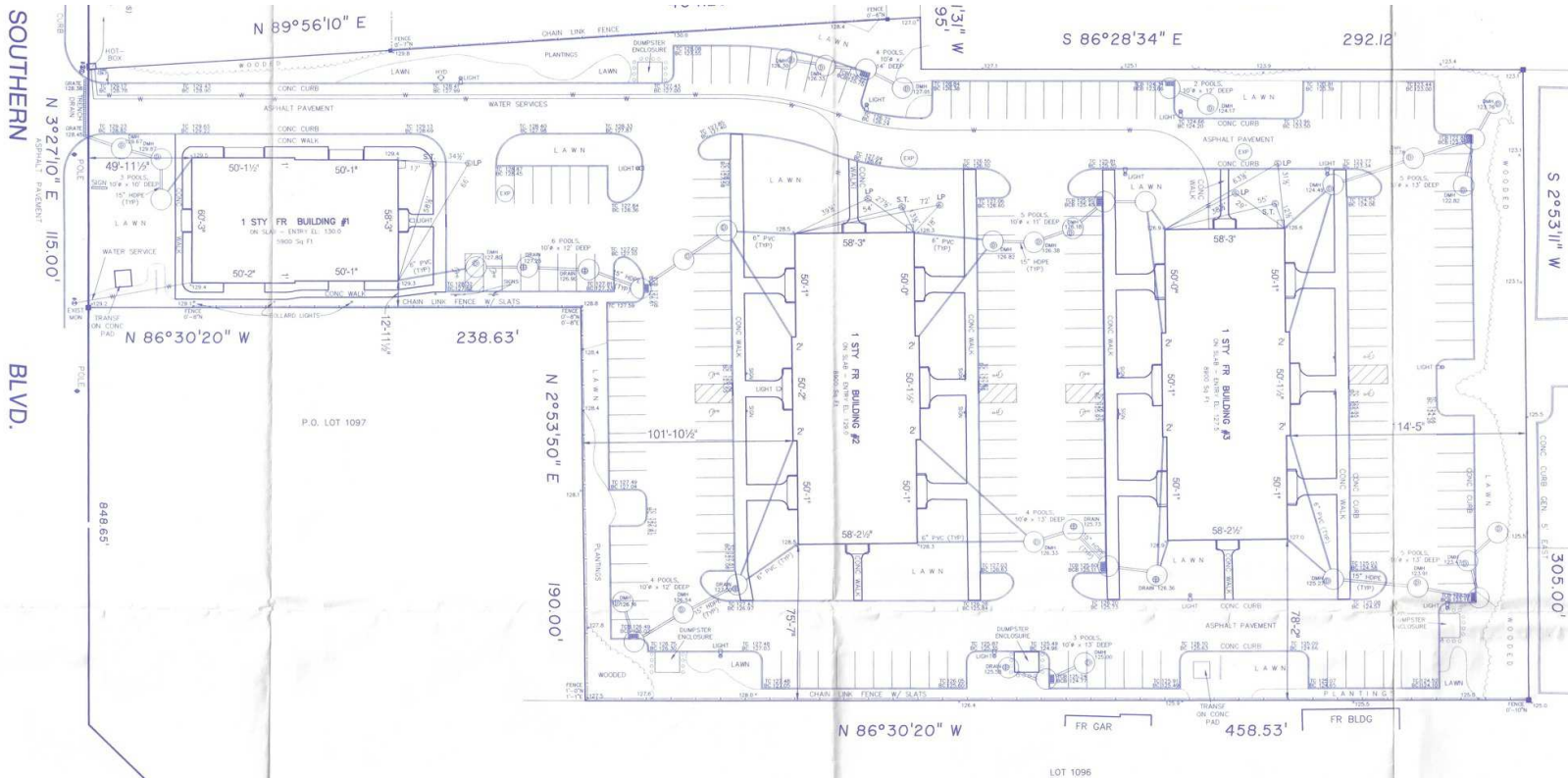
### Property Highlights

- Prime medical office space
- Located immediately off of Nesconset Highway (Route 347)
- Close proximity to a number of major hospitals
- Strong demographics and healthcare demand score

### Offering Summary

Lease Rate:	Rate upon request
Available SF:	1,929 SF
Lot Size:	3.9 Acres
Building Size:	23,700 SF

Demographics	1 Mile	3 Miles	5 Miles
Total Households	3,595	28,417	68,190
Total Population	9,863	79,250	201,962
Average HH Income	\$136,596	\$138,102	\$130,043



**Lease Information**

Lease Type:	NNN	Lease Term:	Negotiable
Total Space:	1,929 SF	Lease Rate:	Rate upon request

**Available Spaces**

Suite	Tenant	Size (SF)	Lease Type	Lease Rate	Description
57-3	Available	1,929 SF	NNN	Rate upon request	Fully built-out medical office suite configured for a small cardiology practice.

# For Lease

## Medical Office Space

## Office Space



### Property Description

Second-generation medical office space.

Space Availability Details:

1,929 SF - Building 57, Suite 3

### Location Description

Immediate access to Nesconset Highway (Rte 347) and Middle Country Road (Rte 25). Only minutes to Stony Brook University Hospital and St. Catherine's Hospital.

### Site Description

L-shaped lot. 110' feet of frontage with 305' of width at rear of property.

### Exterior Description

Three (3) building medical office park in a park-like setting

### Interior Description

Typical medical office configurations throughout

### Utilities Description

Separate gas and electric meters to each suite. Common water meter.

### Construction Description

Frame construction

### Power Description

Separately metered electric service

### Gas Description

Separately metered gas service





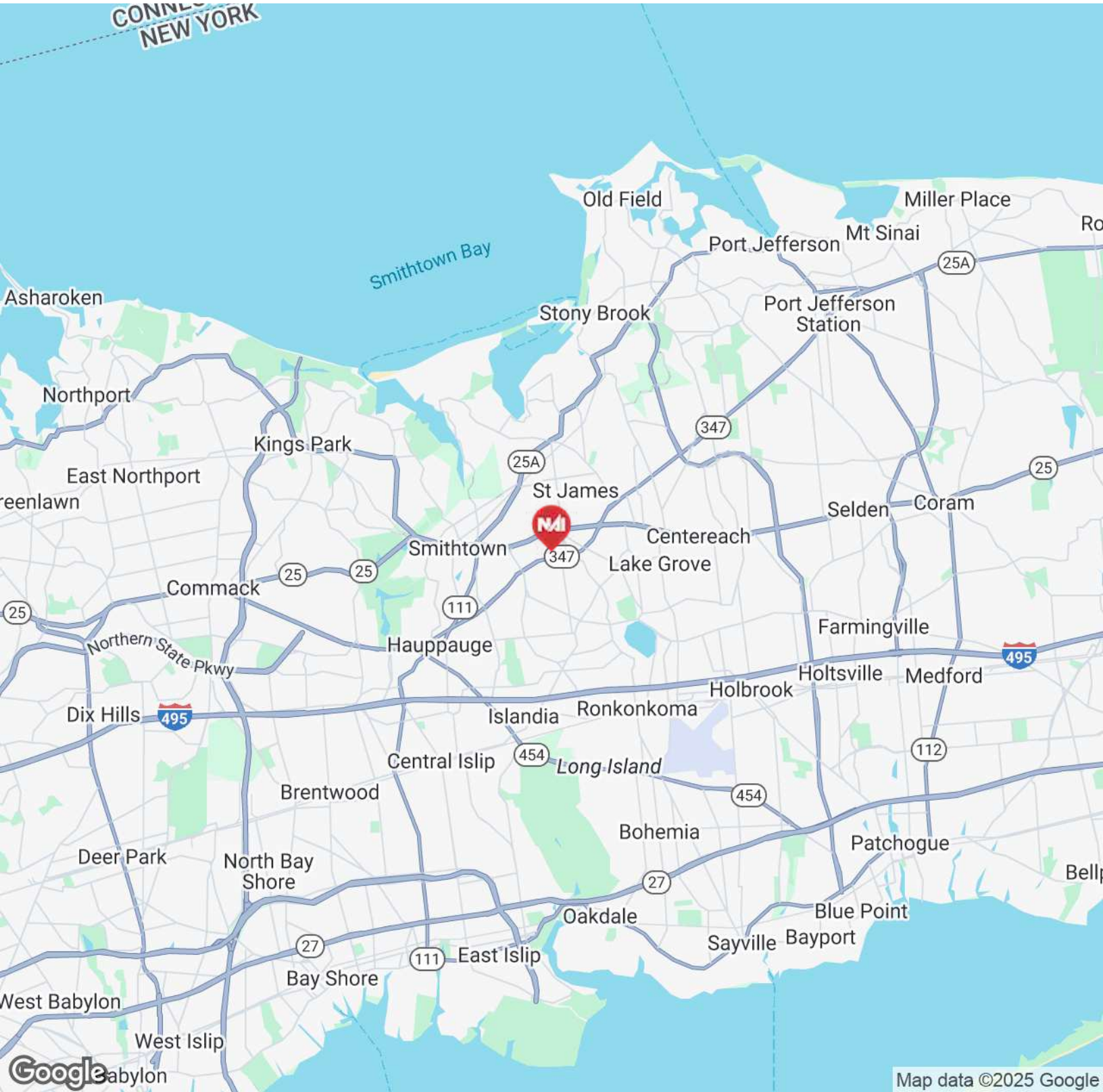


### Lease Information

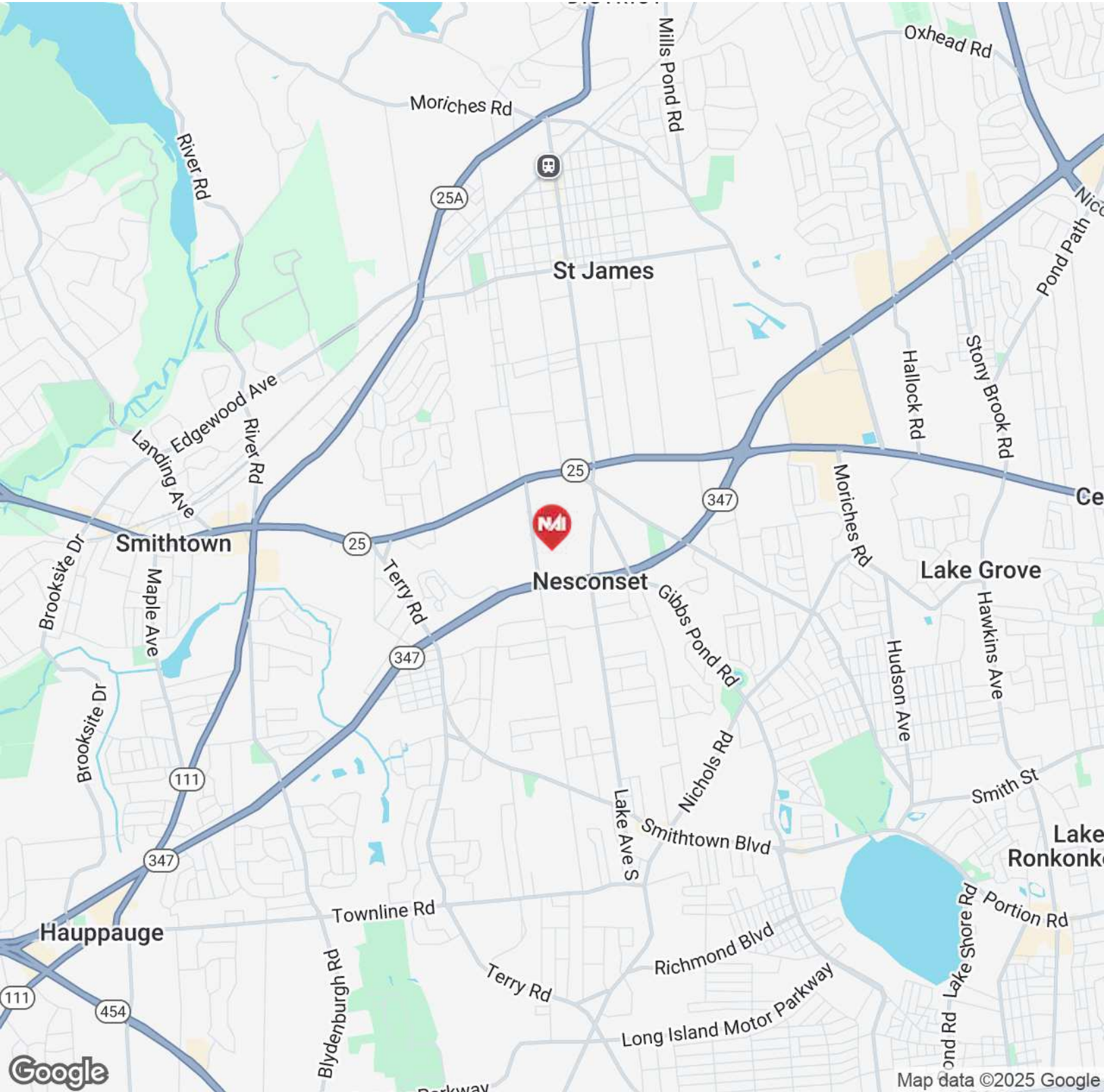
Lease Type:	NNN	Lease Term:	Negotiable
Total Space:	1,929 SF	Lease Rate:	Rate upon request

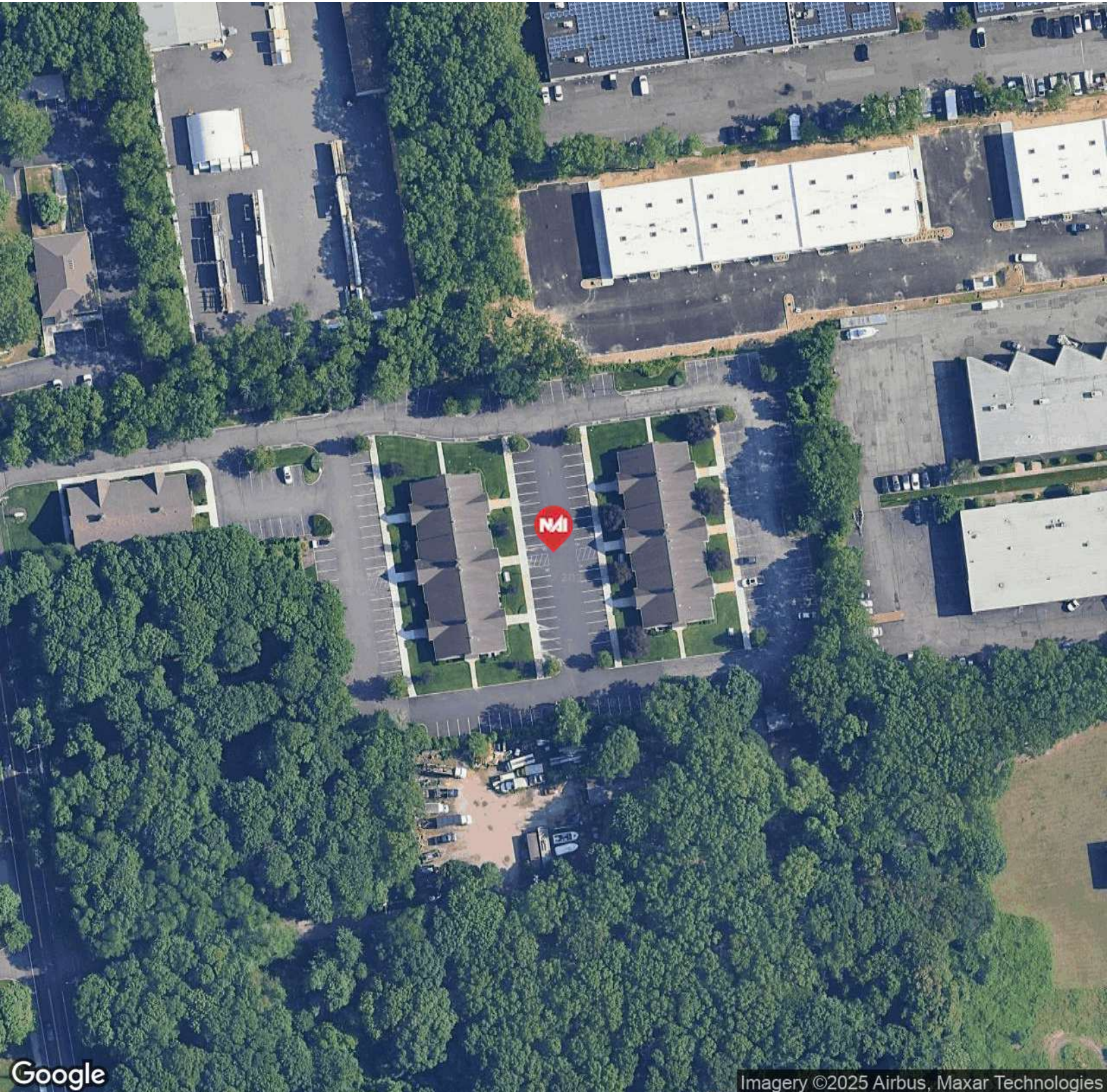
### Available Spaces

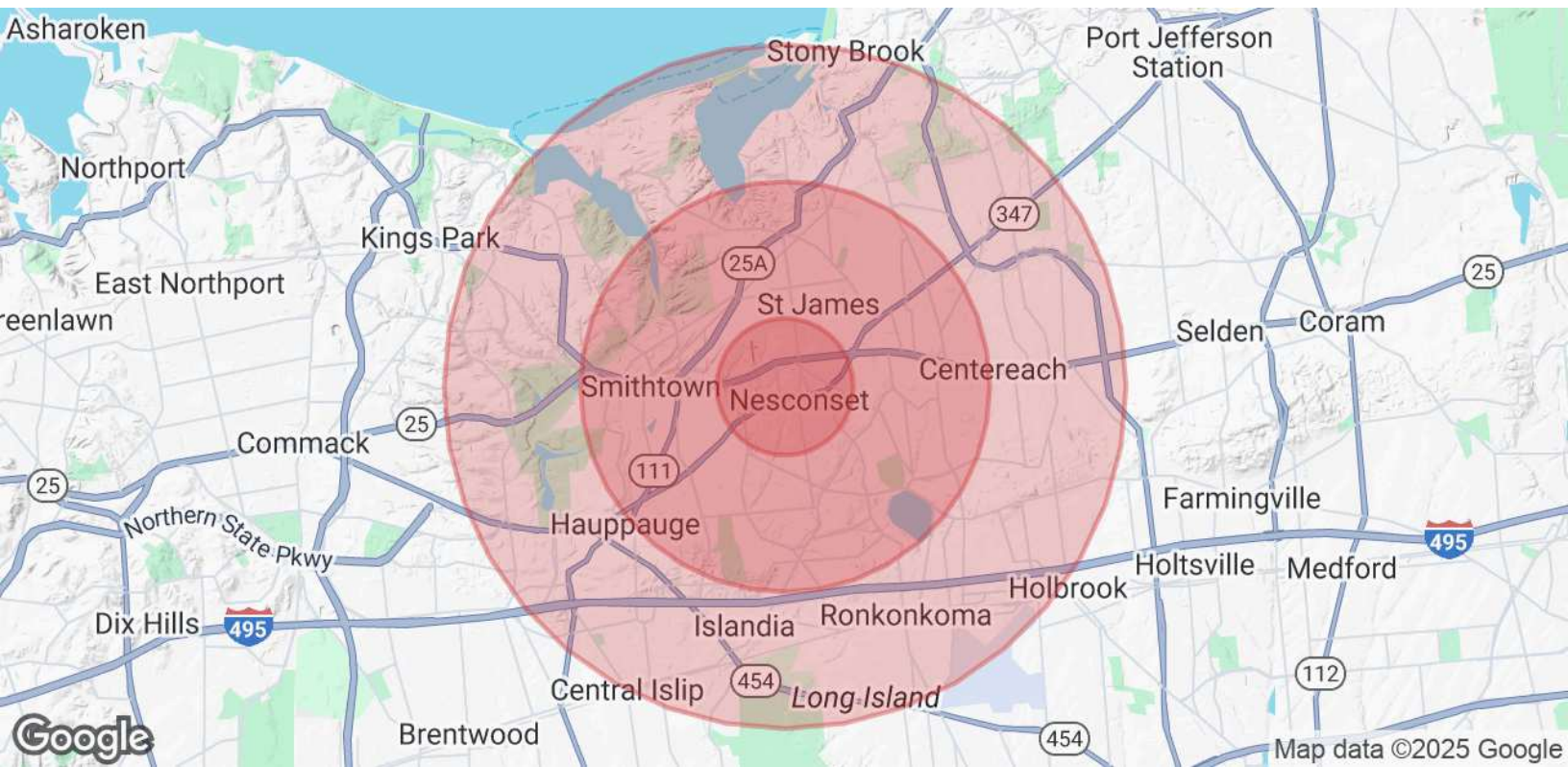
Suite	Tenant	Size	Type	Rate	Description
57-3	Available	1,929 SF	NNN	Rate upon request	Fully built-out medical office suite configured for a small cardiology practice.



For Lease  
Medical Office Space  
Office Space







Population	1 Mile	3 Miles	5 Miles
Total Population	9,863	79,250	201,962
Average Age	42.8	44.1	41.2
Average Age (Male)	40.4	41.3	39.5
Average Age (Female)	43.9	45.3	42.5
Households & Income	1 Mile	3 Miles	5 Miles
Total Households	3,595	28,417	68,190
# of Persons per HH	2.7	2.8	3.0
Average HH Income	\$136,596	\$138,102	\$130,043
Average House Value	\$498,704	\$469,628	\$460,150

2020 American Community Survey (ACS)



**Lee Rosner, SIOR CCIM**

CEO

[lrosner@nailongisland.com](mailto:lrosner@nailongisland.com)

Direct: **631.761.6886** | Cell: **631.786.0557**

## Professional Background

### Career Summary

A veteran of the commercial real estate industry, Lee's career spans more than 35 years gaining him hands-on experience in nearly every facet of the business including sales, leasing, investment strategies, property management, and ownership. In 1997, Lee launched a commercial real estate brokerage firm that is now NAI Long Island, building on his exceptional depth of industry knowledge and pairing it with his natural leadership style to set a path of growth for the company.

He currently is the CEO of NAI Long Island. He is actively involved, daily, with business development, coaching, transaction management, recruiting, operations, and long-term visioning for the firm. Under Lee's leadership and management, NAI Long Island has grown into one of the leading Long Island-based full-service commercial real estate firms completing over \$1B in transaction values and thousands of transactions over the years. The firm manages more than 1.5M square feet of commercial real estate.

Lee is a current Incorporated Village of Port Jefferson Planning Board Member. He completed two terms as a Trustee of the Incorporated Village of Port Jefferson and was the former Chairman of the Zoning Board of Appeals. From 2010 to 2016 he was an Adjunct Professor at Stony Brook University's College of Business teaching an MBA-level course (traditional and online) in commercial real estate fundamentals, user decision-making, and investment analysis through a case study approach to learning.

## Education

Bachelor of Science, Syracuse University

Former Adjunct Professor, Stony Brook University College of Business (MBA) from 2010-2017

## Memberships

SIOR

CCIM

Director and Board Member, Real Estate Institute at Stony Brook University College of Business

Commercial Industrial Brokers Society of Long Island (CIBS)