
415 GALLIMORE DAIRY RD

GREENSBORO NC

Travis Carter, CCIM
336.255.4693
tcarter@kourycorp.com

Breanna Lusk
336.690.3415
blusk@kourycorp.com

Joe Simpson
336.340.1731
jsimpson@kourycorp.com

336.299.9200
KOURYCORP.COM

KOURY
CORPORATION
BUILDER + DEVELOPER



126,000 SF CLASS "A" INDUSTRIAL BUILDING
UNDER CONSTRUCTION

SITE FEATURES

- Located at the intersection of Gallimore Dairy Road and Chimney Rock Road, 415 Gallimore Dairy Rd. is only minutes from Interstate I-40 Interchange and the Gallimore Dairy Rd intersection of Highway 68.
- This prime airport submarket site is less than 3 miles from the Piedmont Triad International Airport, less than 10 miles from both downtown High Point and downtown Greensboro and only 16 miles from downtown Winston Salem.

BUILDING SPECIFICATIONS

TOTAL BUILDING SIZE

+/-126,000 630' x 200'

TOTAL AVAILABLE

+/-126,000 sq ft

CEILING HEIGHT

32' Clear Height

COLUMN SPACING

53' x 53'4"
(53' x 60'4" at docks)

DOCK HIGH DOORS

14 (9' x 10') existing
22 knock outs available

DRIVE-IN DOORS

2 (12' x 14') available

PARKING

125 spaces

SPRINKLERS

ESFR



DESTINATION DRIVE TIME

PTI	12 min
RDU	1 hr 15 min
CLT	1 hr 15 min



WORKFORCE DRIVE TIME

49,008	10 min
242,804	20 min
412,467	30 min



PORTS WITHIN 300 MILES

Wilmington City, NC - 215
Morehead City, NC - 230
Norfolk, VA - 240
Charleston, SC - 285



KOURY
CORPORATION
BUILDER + DEVELOPER

415 GALLIMORE DAIRY RD SITE PLAN

North - additional future development with over 150,000 sq ft of modern industrial buildings to be developed.

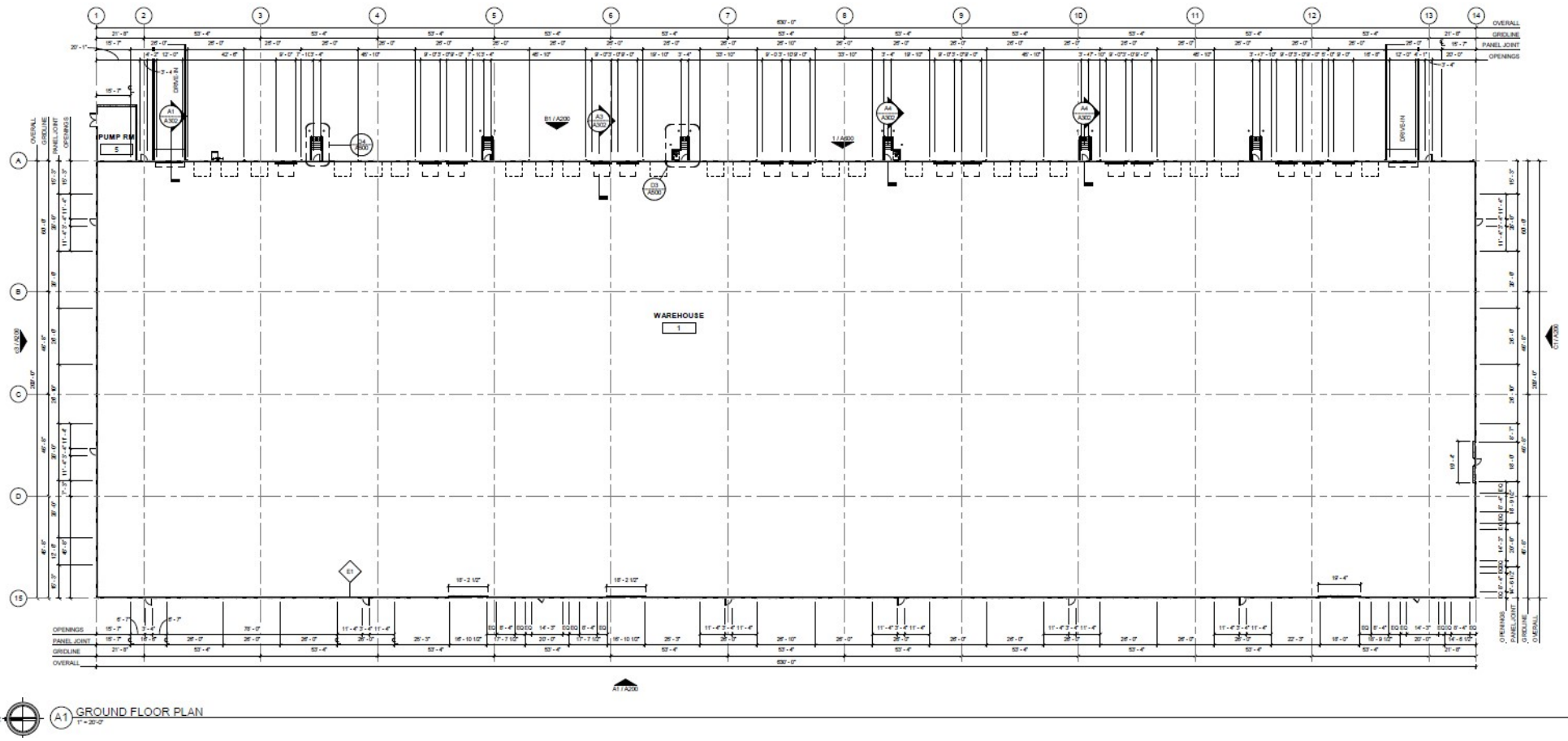


415 GALLIMORE DAIRY RD FLOOR PLAN

Travis Carter, CCIM
336.255.4693
tcarter@kourycorp.com

Joe Simpson
336.340.1731
jsimpson@kourycorp.com

Breanna Lusk
336.690.3415
blusk@kourycorp.com



415 GALLIMORE DAIRY RD ELEVATIONS

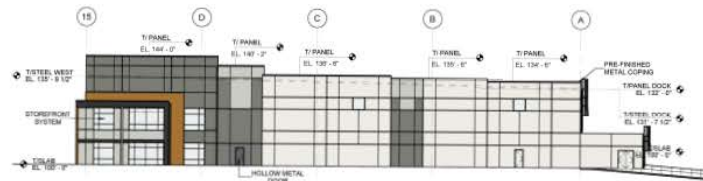
Travis Carter, CCIM
336.255.4693
tcarter@kourycorp.com

Breanna Lusk
336.690.3415
blusk@kourycorp.com

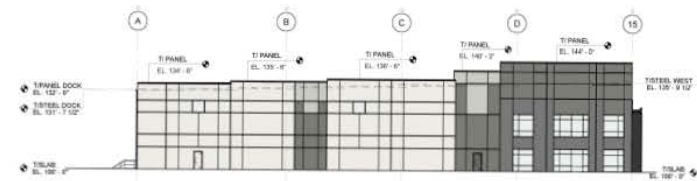
Joe Simpson
336.340.1731
jsimpson@kourycorp.com



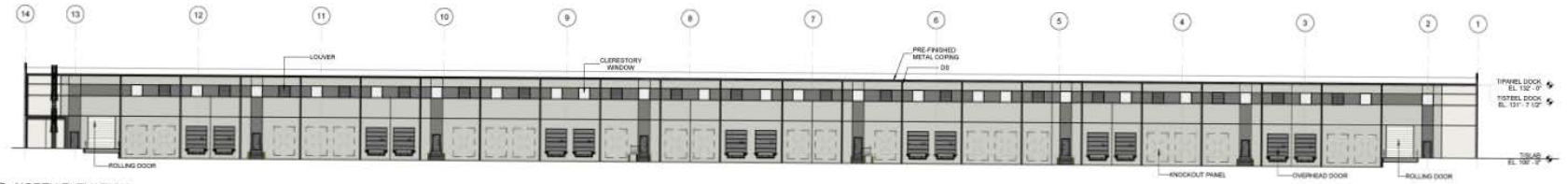
(D1) 3D VIEW 1



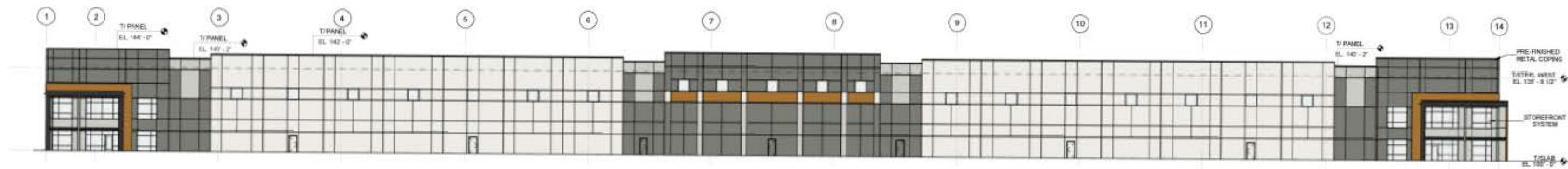
(C1) EAST ELEVATION
1" = 32'-0"



(C3) WEST ELEVATION
1" = 32'-0"



(B1) NORTH ELEVATION
1" = 32'-0"



(A1) SOUTH ELEVATION
1" = 32'-0"