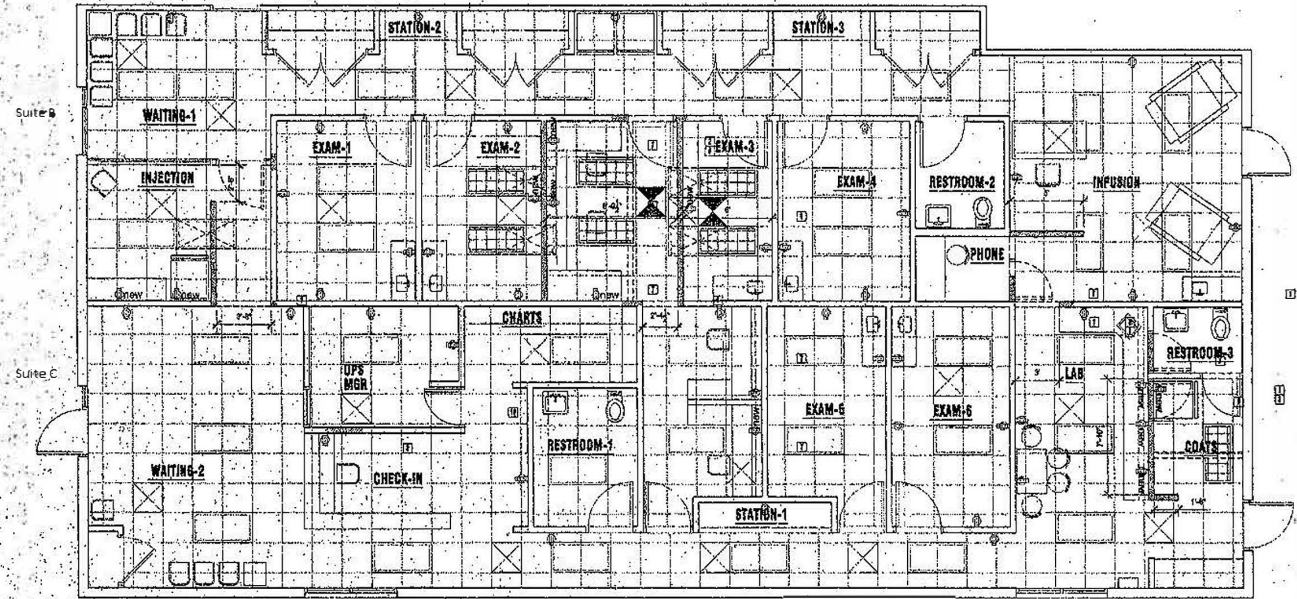
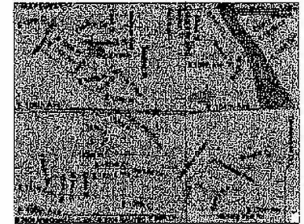


VICINITY MAP



LIGHT SCHEDULE

- EXISTING OR NECESSARY FLUORESCENT LIGHT TO BE REMOVED
- EXISTING OR NECESSARY FLUORESCENT LIGHT TO BE REMAIN
- EXISTING OR NECESSARY RECESSED FLUORESCENT LIGHT

CONSTRUCTION NOTES:

- 1) FLOOR OPENINGS IN EXISTING PARTITION PATCH OUT AS REQUIRED.
- 2) REMOVE EXISTING BOOTH FRAME AND TRIM PATCH OUT AS REQUIRED.
- 3) CLOSE OPENINGS IN EXISTING PARTITION INSTALL NEW WINDOW IN WOOD FRAME 20% J 80% 3P JFF
- 4) REMOVE AND RELOCATE EXISTING COUNTER AND CABINETS REMOVE AND RELOCATE EXISTING SINK.
- 5) ADD ADDITIONAL COUNTER AND CABINETS AS SHOWN JANET EXISTING.
- 6) NEW SINK, COUNTER AND CABINETS TO MATCH EXISTING, 2' WIDE.
- 7) NEW PARTIAL HOLLOW WALL AND P-LINE COUNTERS WHERE INDICATED.
- 8) EXISTING RELOCATED SINK AND FRAME REMOVE CALLS AS REQUIRED.
- 9) RELOCATE EXISTING RECESSED FLUORESCENT LIGHTS PATCH OUT AS REQUIRED.
- 10) NEW WOOD AND FRAME AND TRIM VERIFY SIZE OF EXISTING OPENING.

CODE COMPLIANCE INFORMATION

APPLICABLE CODES:		BUILDING OCCUPANCY:	
INTERNATIONAL BUILDING CODE	1997 EDITION	OSDFP 3 - MEDICAL OFFICE	
USBC	2000 EDITION		
USBC	1998 EDITION		
USBC	1985 EDITION		
		CONSTRUCTION TYPE:	NOT AVAILABLE

OCCUPANT LOAD CALCULATIONS

AREA OF ALTERATION: 5,400 SQ FT
OCCUPANT LOAD PER 8' COEFFICIENT = 100 SQ FT PER PERSON
OCCUPANT LOAD = 54 PERSONS

EXIT REQUIREMENTS

1. MINIMUM 10' ON SOME OCCUPANTS - 2
NUMBER OF EXITS PROVIDED = 3
MAXIMUM TRAVEL DISTANCE = 60 FEET
MAXIMUM ALLOWABLE TRAVEL DISTANCE = 200 FEET
CORRIDOR WIDTH = 5'0" MINIMUM
BUILDING HEIGHT = 1P/0
NUMBER OF STORIES = 1

NOTE:



1ST ALLERGY AND ASTHMA CENTER
3655 EAST 104TH AVENUE, SUITE B
THORNTON, COLORADO