



FOR SUBLEASE / FLOORS 12-15

**980 HOWE STREET** VANCOUVER BC

**64,000 SF** HIGH QUALITY  
PLUG & PLAY OPPORTUNITY



— FOR SUBLEASE / FLOORS 12-15 —

**980 HOWE STREET VANCOUVER BC**

**64,000 SF HIGH QUALITY PLUG & PLAY OPPORTUNITY**



**PUBLIC TRANSPORTATION**

2 minute walk to public transportation



**CAR PARKING**

1 per 1,560 SF



**EV CHARGING**

On-site



**BICYCLE STORAGE**

On-site



**CONFERENCE CENTRE**

Penthouse terrace and conference centre



**FITNESS CENTRE**

On-site



**AWARDS & CERTIFICATIONS**

BOMA Best Platinum  
LEED Gold EB & Shell certified  
Energy Star - Certified  
Rick Hansen Foundation Accessibility  
Gold Certification

**ABOUT THE BUILDING**

A class "A" LEED Gold certified office development. Clad in triple pane glass with dichroic accents, this state-of-the-art, 16-storey office building offers uncompromising quality in every detail. - A simple, clean and modern design combines warm wood finishes with elegant marble and a double height lobby - Innovative use of glass, colour and tinting allows ample daylight, uninterrupted views with floor-to-ceiling windows and energy conservation - Amenities include a penthouse conference facility with an outdoor garden, an exclusive tenant lounge and a fitness centre. [www.980howe.com](http://www.980howe.com)



— FOR SUBLEASE / FLOORS 12-15 —  
**980 HOWE STREET VANCOUVER BC**  
64,000 SF HIGH QUALITY PLUG & PLAY OPPORTUNITY



#### AVAILABLE AREA

12th Floor	15,842 SF
13th Floor	15,945 SF
14th Floor	15,945 SF
15th Floor	15,842 SF
<b>Total Available Area</b>	<b>63,574 SF</b>

#### FEATURES

All floors feature open plan desks, large boardrooms, meeting rooms, call rooms and collaboration spaces.

#### FURNITURE

Furniture available.

#### NET ASKING RATE

Contact listing agents for details

#### TAXES & OPERATING COSTS

\$24.31 psf, per annum for 2023

#### SUBLEASE EXPIRY DATE

August 30, 2026

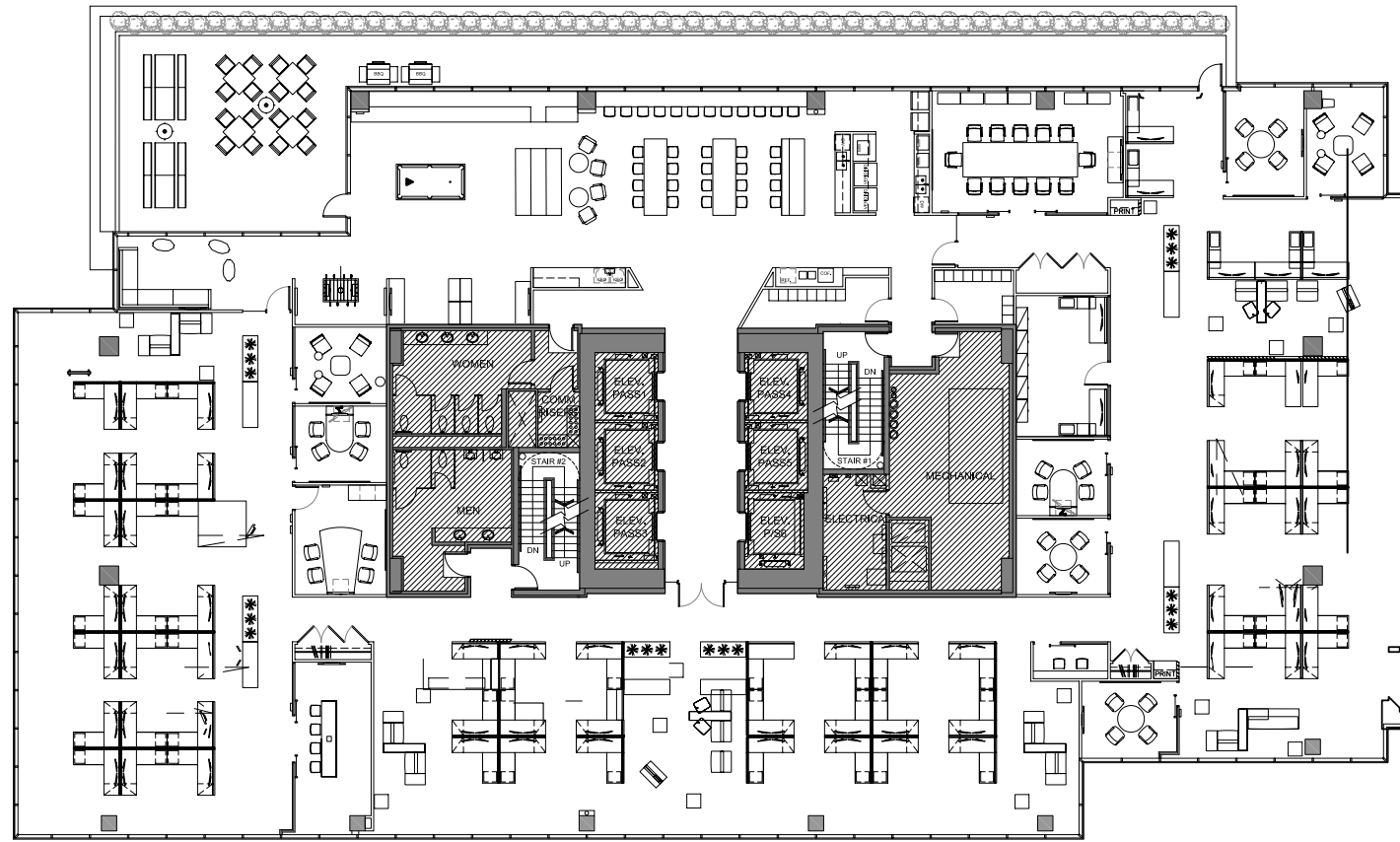
#### AVAILABLE

Immediately



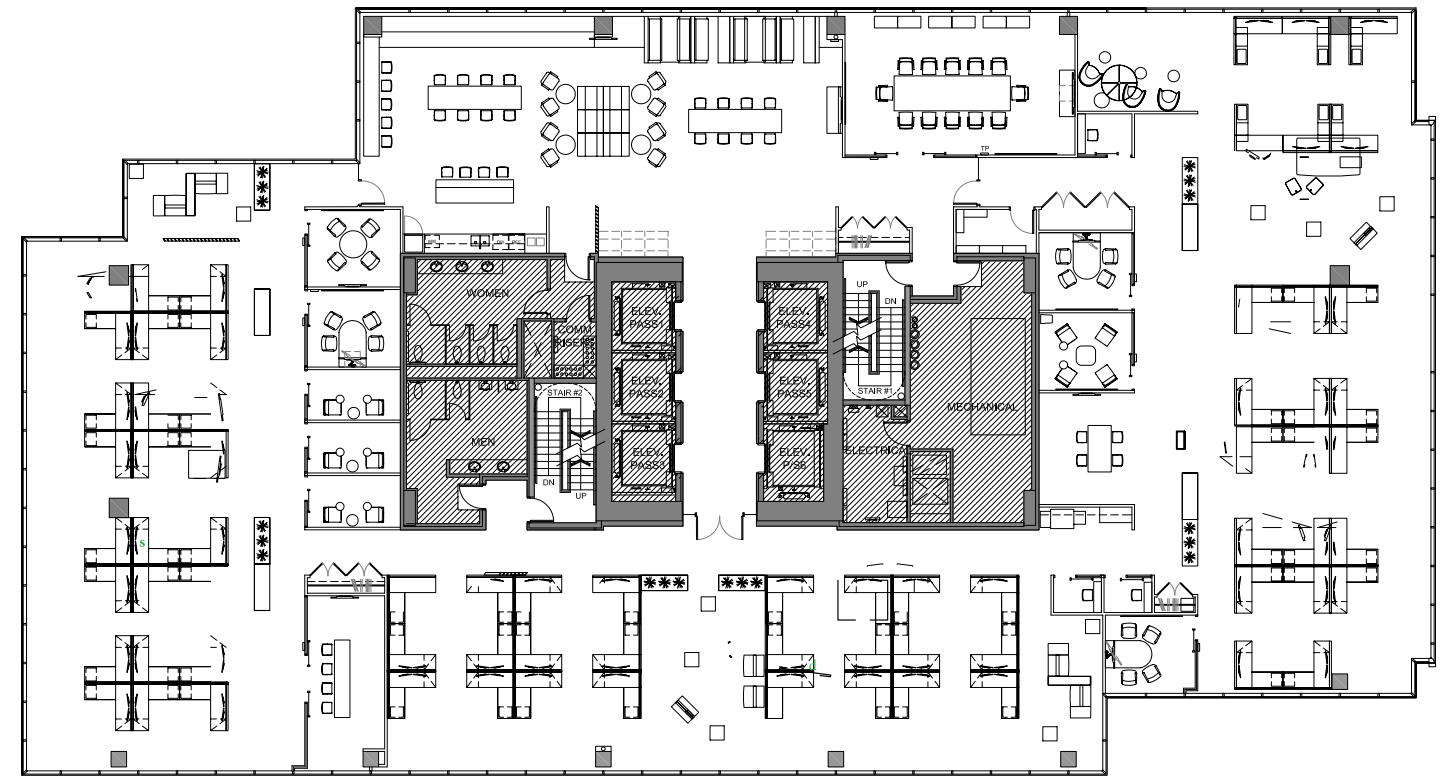
### 12<sup>TH</sup> FLOOR

15,842 SF



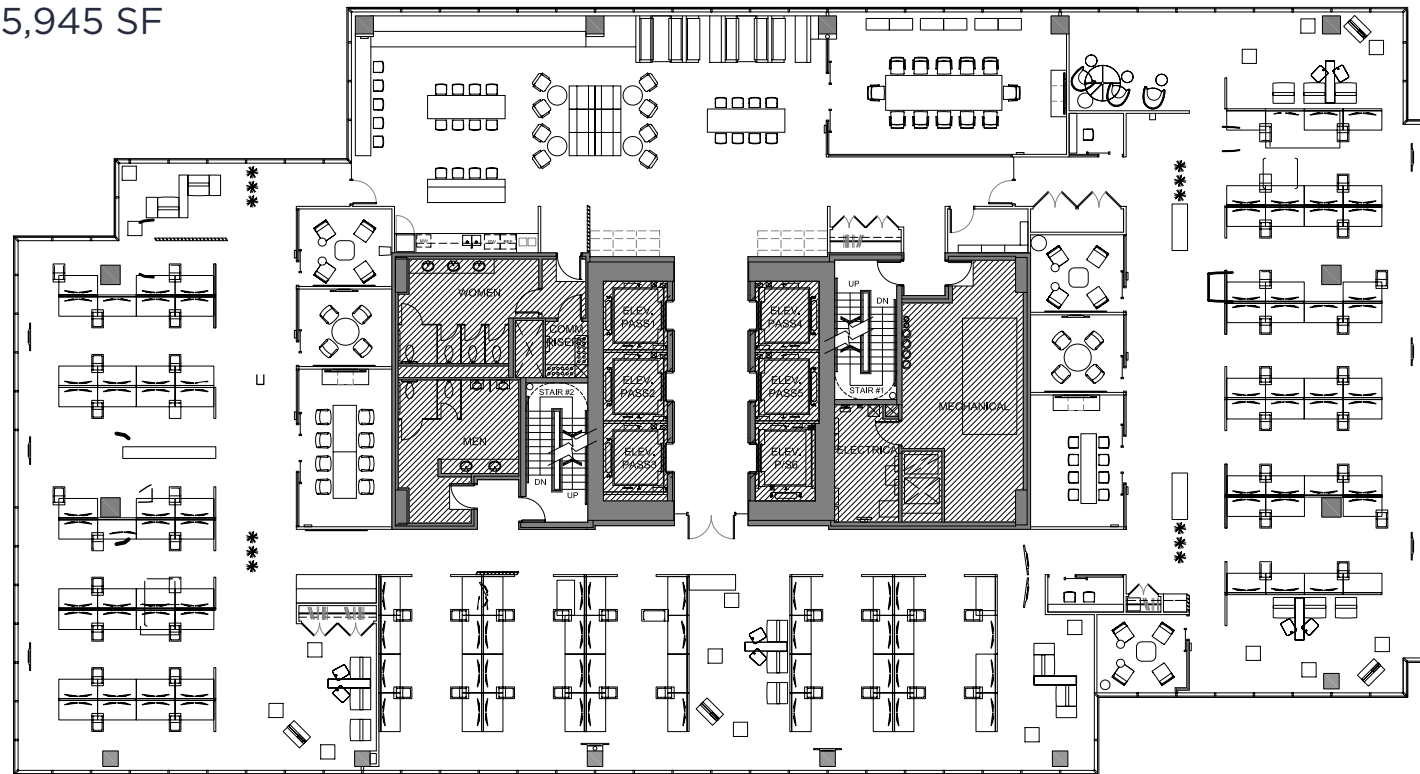
### 14<sup>TH</sup> FLOOR

15,945 SF



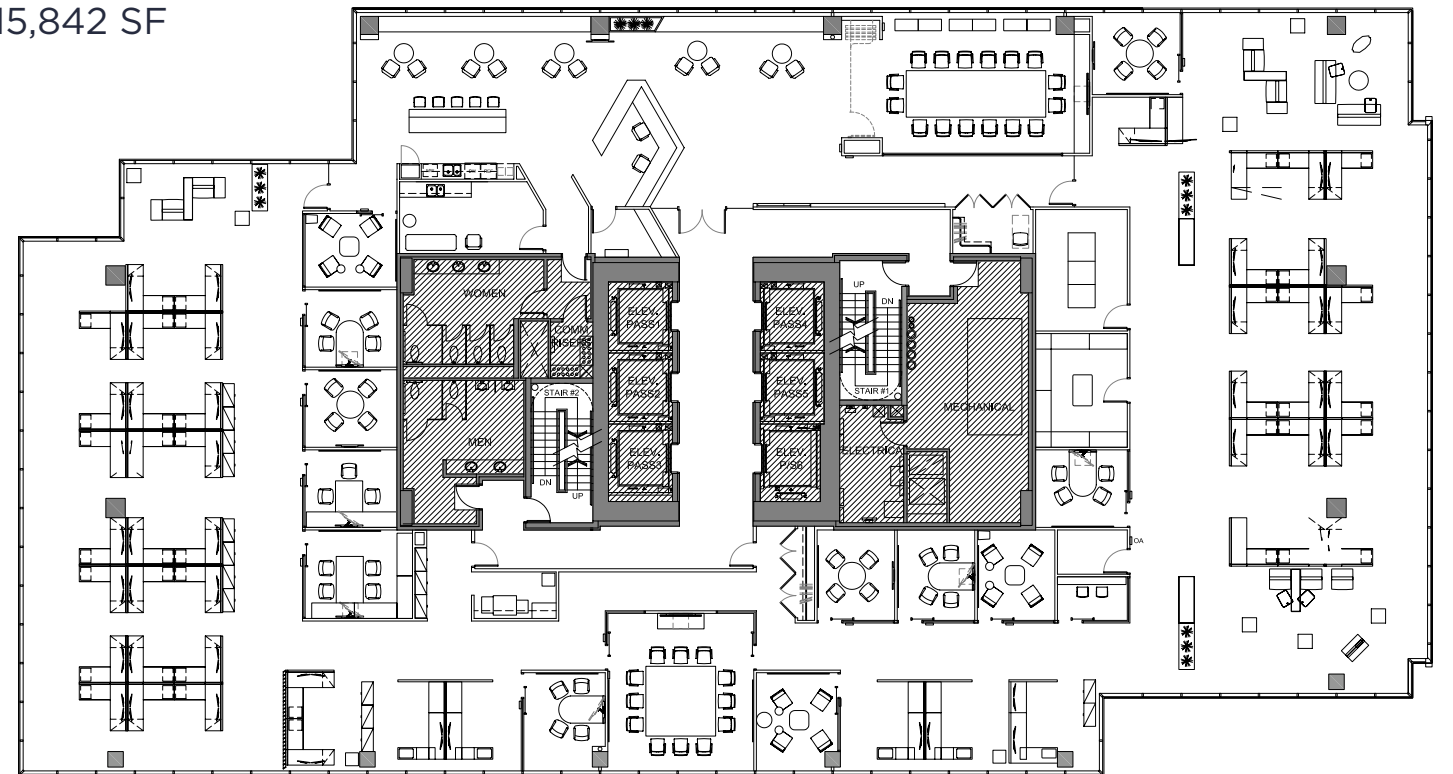
### 13<sup>TH</sup> FLOOR

15,945 SF

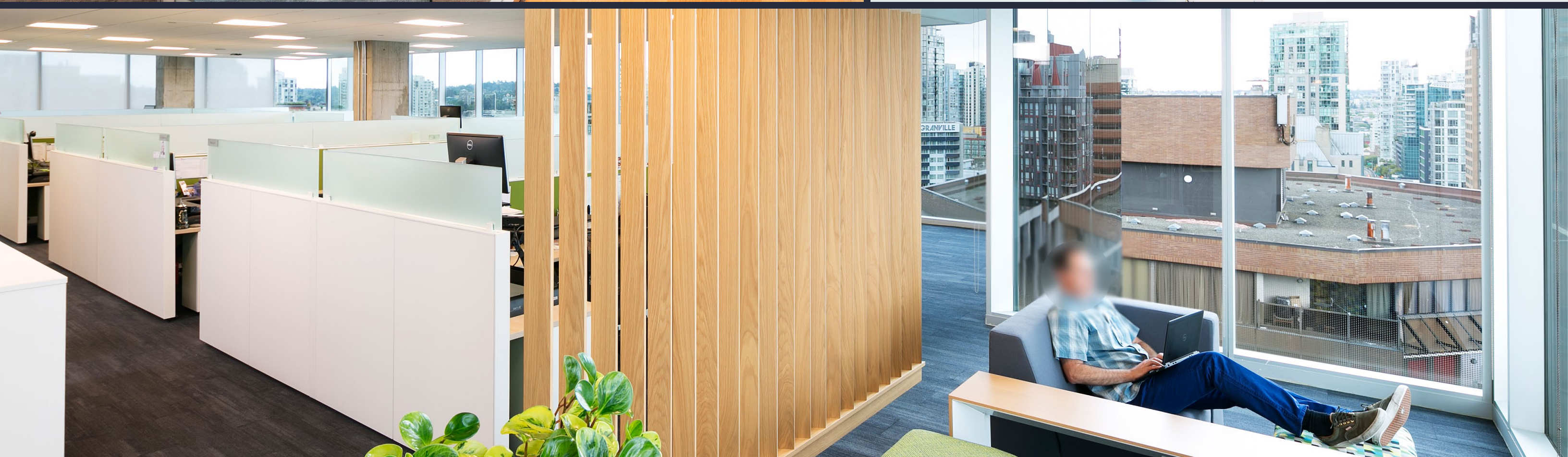


### 15<sup>TH</sup> FLOOR

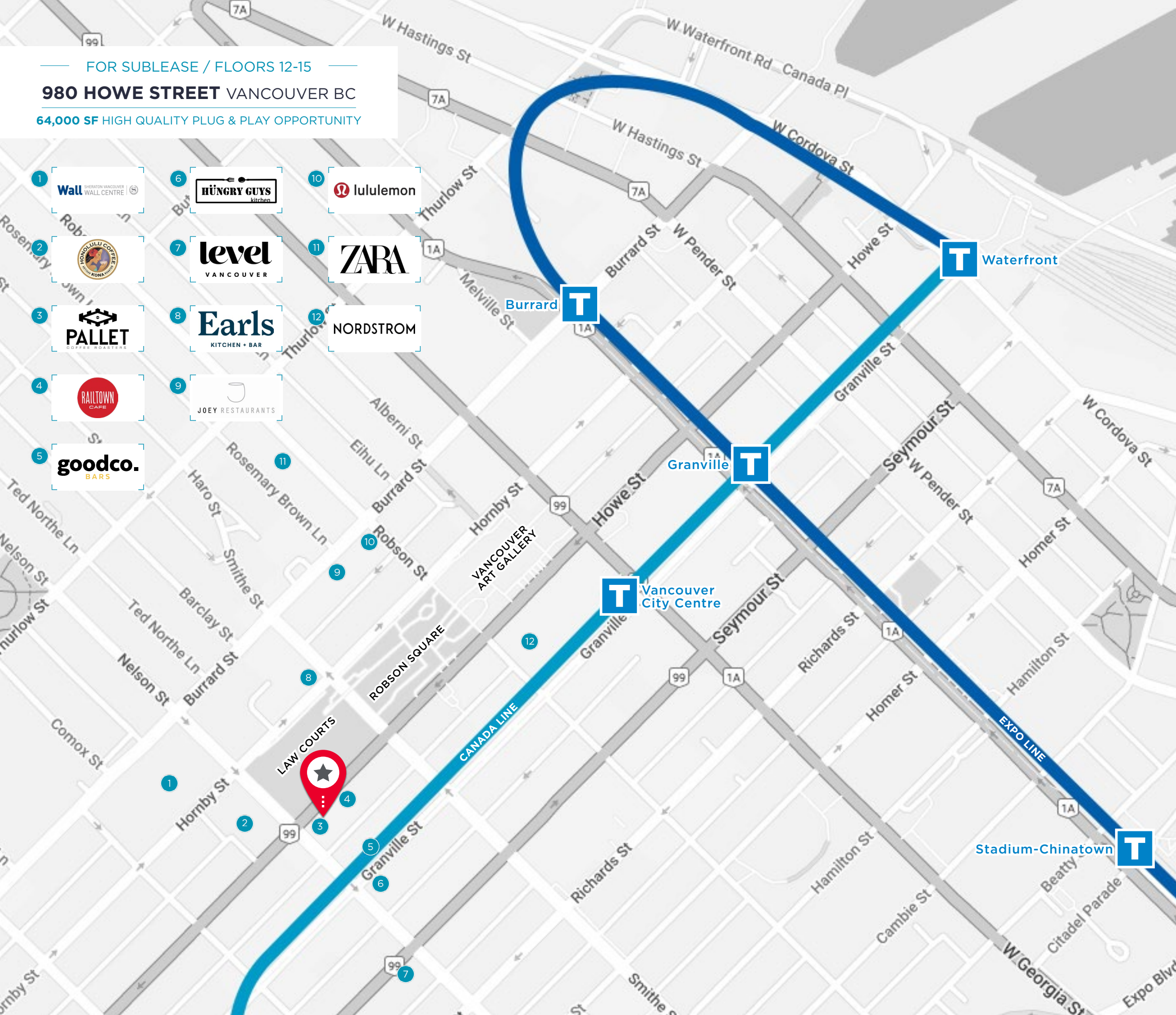
15,842 SF



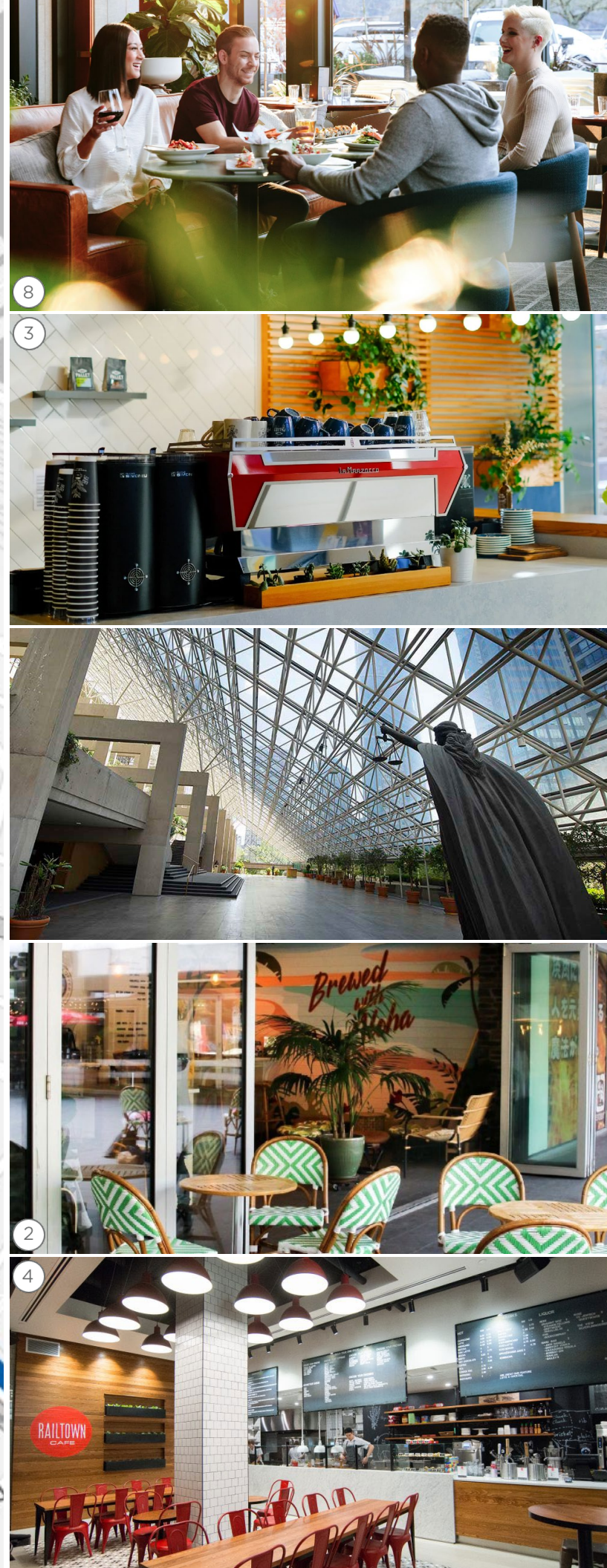
**TOTAL AVAILABLE AREA: 63,574 SF**



FOR SUBLEASE / FLOORS 12-15  
**980 HOWE STREET VANCOUVER BC**  
 64,000 SF HIGH QUALITY PLUG & PLAY OPPORTUNITY



- 1 Wall
- 2 HONOLULU COFFEE
- 3 PALLET COFFEE ROASTERS
- 4 RAILTOWN CAFE
- 5 goodco. BARS
- 6 HUNGRY GUYS kitchen
- 7 level VANCOUVER
- 8 Earls KITCHEN + BAR
- 9 JOEY RESTAURANTS
- 10 lululemon
- 11 ZARA
- 12 NORDSTROM



— FOR SUBLEASE / FLOORS 12-15 —

**980 HOWE STREET** VANCOUVER BC

**64,000 SF** HIGH QUALITY PLUG & PLAY OPPORTUNITY



**BART CORBETT\***

BG Corbett Realty Advisors Ltd.  
Executive Vice President  
604 640 5881  
bart.corbett@cushwake.com

**JORDAN CORBETT**

Associate  
604 640 5815  
jordan.corbett@cushwake.com



Suite 700 - 700 West Georgia Street / PO Box 10023, Pacific Centre / Vancouver, BC V7Y 1A1 / 604 683 3111 / [cushmanwakefield.ca](http://cushmanwakefield.ca)

\* Bart Corbett is licensed with BG Corbett Realty Advisors Ltd. and has a contractual relationship with Cushman & Wakefield ULC  
E.&O.E.: This communication is not intended to cause or induce breach of an existing agency agreement. The information contained herein was obtained from sources which we deem reliable and, while thought to be correct, is not guaranteed by Cushman & Wakefield ULC (10/22/bg)