

ST. AUGUSTINE FLEX

6236US-1North, St.Augustine, FL 32095

FOR LEASE

RENT: \$19.00 NNN



Jeffrey Terwilliger

607.745.0364

jterwilliger@svrrealtyfl.com

Lenny DeGirolmo

386.956.4143

ldegirolmo@svrcom.com

Chris Woodward

386.748.8285

cwoodward@svrcom.com

ST. AUGUSTINE FLEX SPACE

Location Description

Situated in one of the fastest-growing counties in Florida. Located directly on US-1 with the ability to utilize a sign. Abundant area development including nearby retail, single and multi-family communities.

Property Overview:

Address: 6236 US-1 North Unit K

St. Augustine, FL 32095

Unit Size: 1500 SF

Estimated Cam: \$4.25 Per SF

Use: Flex

Rent Price: \$19.00 NNN



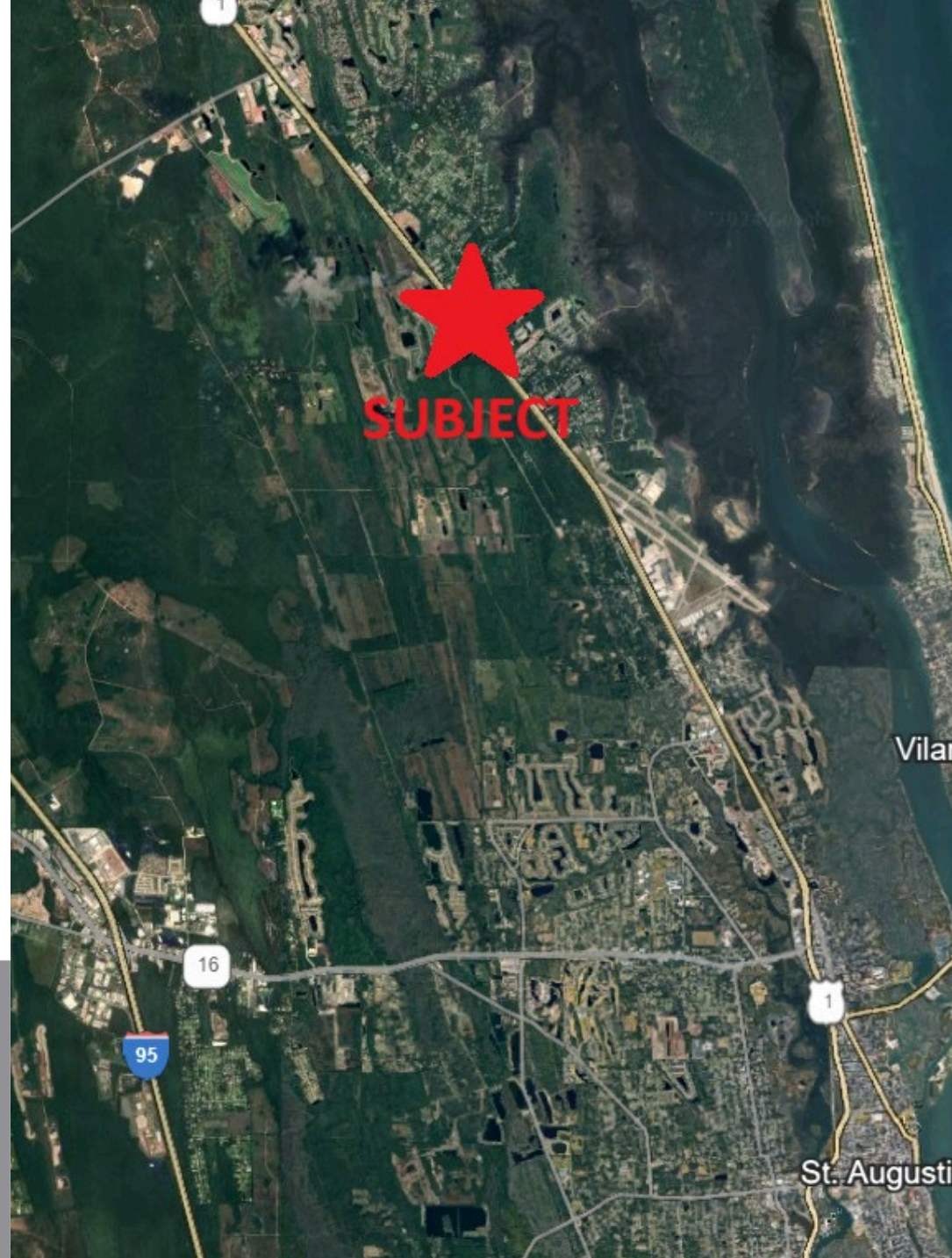
FAST GROWING
AREA



ABUNDANT DEVELOPMENT
LOCATION



DIRECTLY ON
US-1



Jeffrey Terwilliger

607.745.0364

jterwilliger@svrrealtyfl.com

Lenny DeGirolmo

386.956.4143

ldegirolmo@svrcom.com

Chris Woodward

386.748.8285

cwoodward@svrcom.com

RETAILER MAP

The map displays several retail locations around an airport area, indicated by callout boxes with logos:

- STARBUCKS COFFEE**: Located in the upper left quadrant.
- JOINT BAGEL COMPANY**: Located at the top center, with "ST. AUGUSTINE, FL" and "EST. 2018" above the logo.
- RaceTrac**: Located in the upper right quadrant.
- TRUIST**: Located in the middle right quadrant.
- DOLLAR GENERAL**: Located in the middle right quadrant, below Truist.
- DUNKIN' DONUTS**: Located in the center of the map.
- Publix**: Located in the lower left quadrant.
- U-HAUL**: Located in the lower center quadrant.
- o2b KIDS!**: Located in the lower right quadrant.
- PIZZA**: Located at the bottom center.

Geographical features include the **Tolomato River** on the right side, **Dixie Hwy** running diagonally, and **International Gateway** near the center. A red location pin is placed on Dixie Hwy. Highway markers for **1**, **A1A**, and **ATA** are visible.

HIGHLIGHTS



Property Highlights

- Open Floorplan
- Fully air-conditioned
- Ceiling height - '16 FT
- Roll-up door (12x14 FT) & glass door front
- Private Bathroom



Jeffrey Terwilliger
607.745.0364
jterwilliger@svrrealtyfl.com

Lenny DeGirolmo
386.956.4143
ldegirolmo@svrcom.com

Chris Woodward
386.748.8285
cwoodward@svrcom.com