

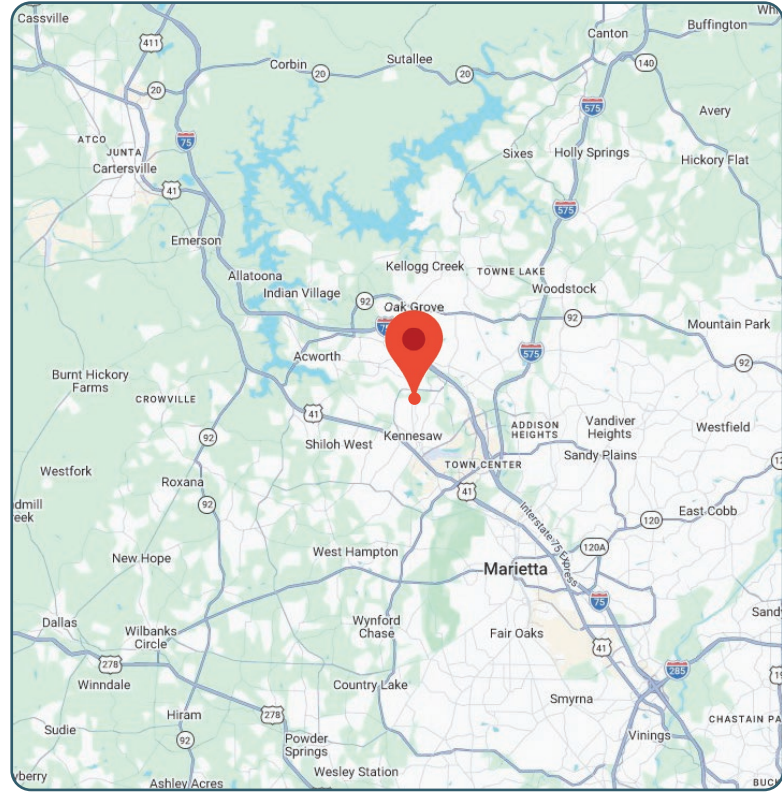
# FOR LEASE

3694 KENNESAW SOUTH INDUSTRIAL DRIVE  
KENNESAW, GA 30144



## PROPERTY INFORMATION

|                        |   |
|------------------------|---|
| <b>AVAILABLE SPACE</b> | Suite B: ±10,660 SF   |
| <b>OFFICE SIZE</b>     | ±1,400 SF (2-Story)   |
| <b>MEZZANINE</b>       | ±540 SF   |
| <b>WAREHOUSE SIZE</b>  | ±9,260 SF   |
| <b>DOCK-HIGH DOORS</b> | Two (2)   |
| <b>DRIVE-IN DOORS</b>  | One (1)   |
| <b>CLEAR HEIGHT</b>    | ±30'  |
| <b>HVAC</b>            | Fully Air-Conditioned   |
| <b>KEY DISTANCES</b>   | <ul style="list-style-type: none"><li>• ±0.4 mi to Jiles Rd</li><li>• ±1.9 mi to I-75 (Exit 273)</li><li>• ±2 mi to Cobb Pkwy (US 41)</li><li>• ±4.2 mi to I-575 (Exit 3)</li></ul> |



All information contained herein is believed to be accurate but is not warranted. This offer is subject to errors, omissions, prior sale or withdrawal.



**Hughes Commercial Real Estate, Inc.**  
8215 Roswell Road, Building 700  
Atlanta, GA 30350  
770-559-1099 | hughes-cre.com

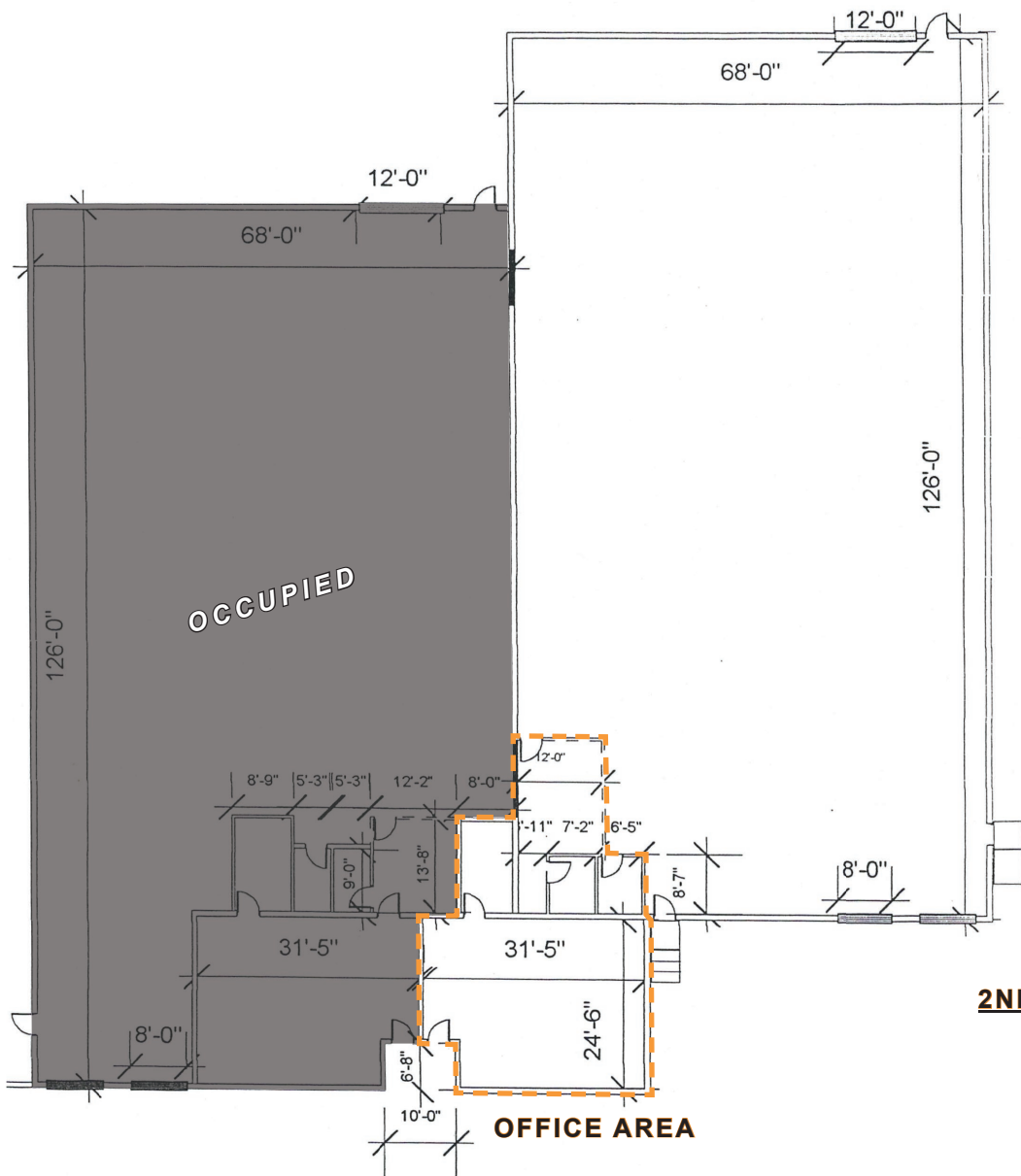
**Cade McDonald**  
404-307-5166  
cade@hughes-cre.com

**James Hicks**  
404-304-2386  
james@hughes-cre.com

# FOR LEASE

3694 KENNESAW SOUTH INDUSTRIAL DRIVE  
KENNESAW, GA 30144

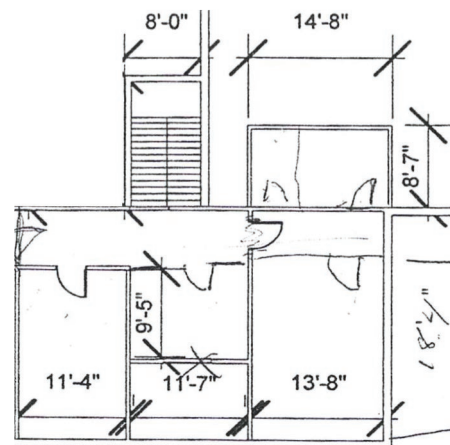
## SUITE B FLOOR PLAN | 10,660 SF



### SUITE B INFORMATION

- ±10,660 SF Total
- ±1,400 SF (2-Story) Office
- ±540 SF Mezzanine
- ±9,260 SF Warehouse
- Two (2) Dock-High Doors
- One (1) Drive-In Door
- ±30' Clear Height
- Fully Air-Conditioned

### 2ND-STORY OFFICE & MEZZANINE



All information contained herein is believed to be accurate but is not warranted. This offer is subject to errors, omissions, prior sale or withdrawal.



**Hughes Commercial Real Estate, Inc.**  
8215 Roswell Road, Building 700  
Atlanta, GA 30350  
770-559-1099 | hughes-cre.com

**Cade McDonald**  
404-307-5166  
cade@hughes-cre.com

**James Hicks**  
404-304-2386  
james@hughes-cre.com