



SUBLEASE AVAILABLE

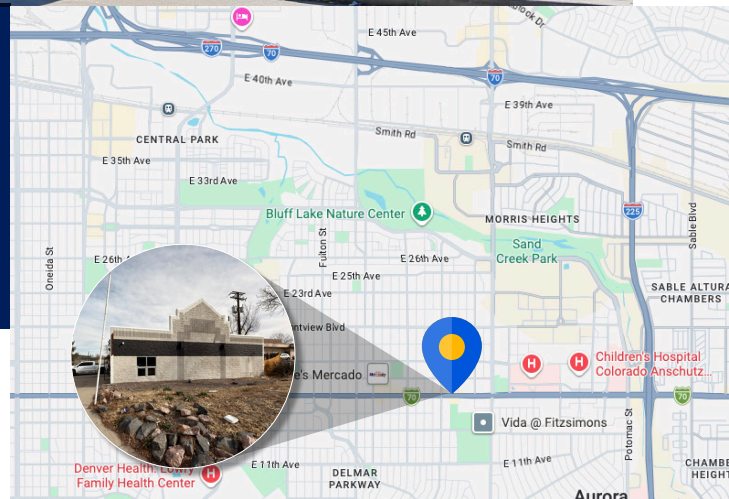
11607 E COLFAX AVE
Aurora, CO 80010

SUBLEASE OVERVIEW

PREMISES:	6,222 RSF
PROPERTY:	Built 1989
LEASE EXPIRATION:	12/31/2027
USE:	Auto Repair/Service
LAND:	0.48 Acres
CLEAR HEIGHT:	16'
PARKING:	2.25:1,000 14 Spaces
OCCUPANCY:	Immediate

NOTES

- 3 Drive-In Bays
- Paint Booth
- Zoned for Wide Variety of Commercial Uses
- Monument Signage on High-Traffic Corridor
- ~35,000 - 45,000 AADT Colfax Ave near Peoria St.



CONTACT

ROB ANDERSON | Principal
925.528.8080
rkanderson@cresa.com

EDDIE COXE | Senior Advisor
908.3802942
ecoxe@cresa.com

11607 E COLFAX
Aurora, CO 80010



6,222 RSF



11607 E COLFAX
Aurora, CO 80010

