



FOR LEASE

FORMER
CASTLEBERRY'S PLANT

1621 15th Street, Augusta, GA 30901

**SHERMAN &
HEMSTREET**
Real Estate Company

CHARLES HOCK, SIOR, CCIM

charleswhock@aol.com
706.722.8334

JODI LYLES

Sales Administrator
creads@shermanandhemstreet.com
706.288.1067

Property Summary



PROPERTY DESCRIPTION

This 231,879 sq. ft. former food grade building has 147,256 sq. ft. of available warehouse space. The warehouse is 18 to 30 feet in the clear height, and it has 9 loading dock doors with three (3) drive-in doors. Additional offices and loading docks can be added at the tenant's request.

PROPERTY HIGHLIGHTS

- Great Downtown Location
- Newly Renovated Building
- 34.52 Acre Site



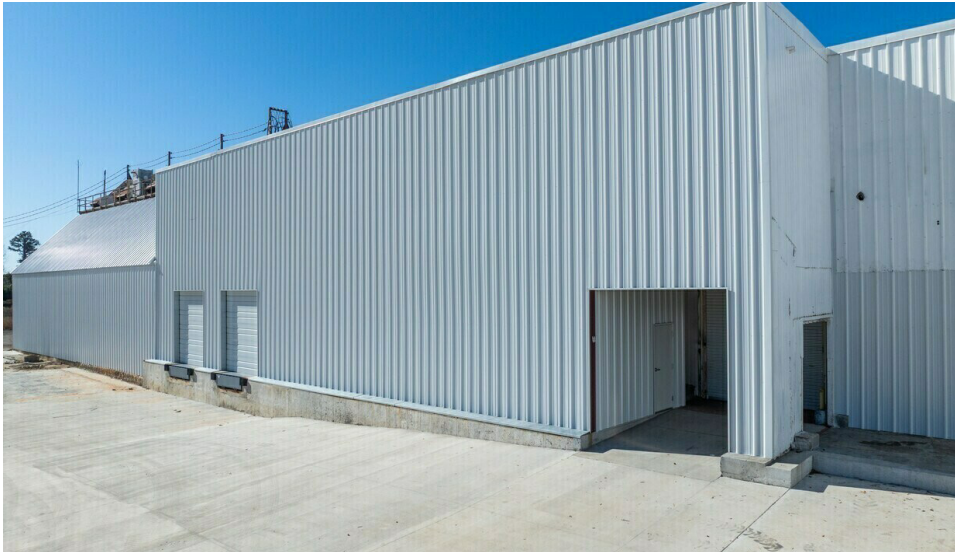
CHARLES HOCK, SIOR, CCIM
 charleswhock@aol.com
 706.722.8334

OFFERING SUMMARY

Lease Rate:	\$5.50 per SF/yr. (NNN)
Available SF:	9,789 - 147,256 SF
Lot Size:	20.55 Acres
Building Size:	231,879 SF

DEMOGRAPHICS	0.5 MILES	1 MILE	1.5 MILES
Total Households	928	4,278	8,633
Total Population	1,870	8,476	17,125
Average HH Income	\$32,179	\$32,399	\$36,387

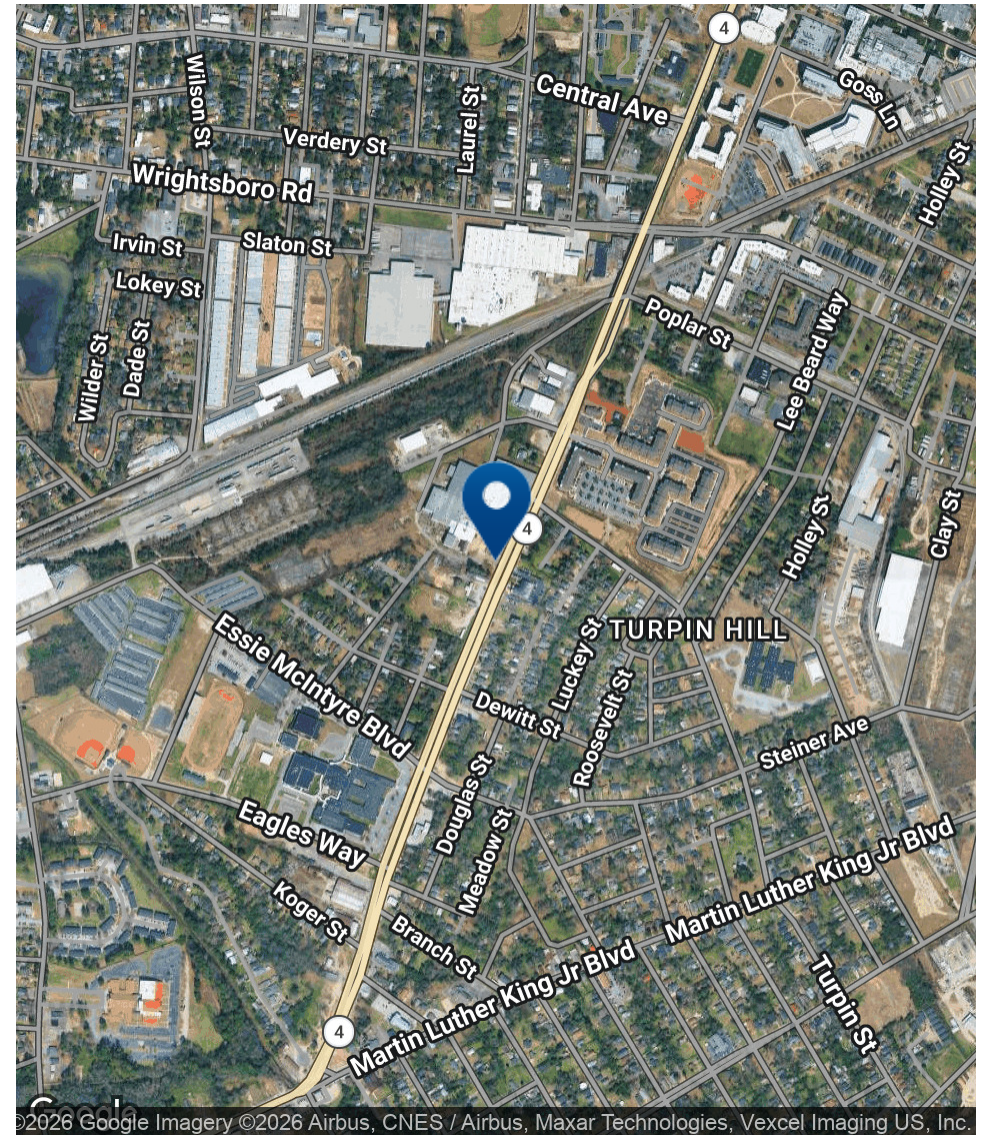
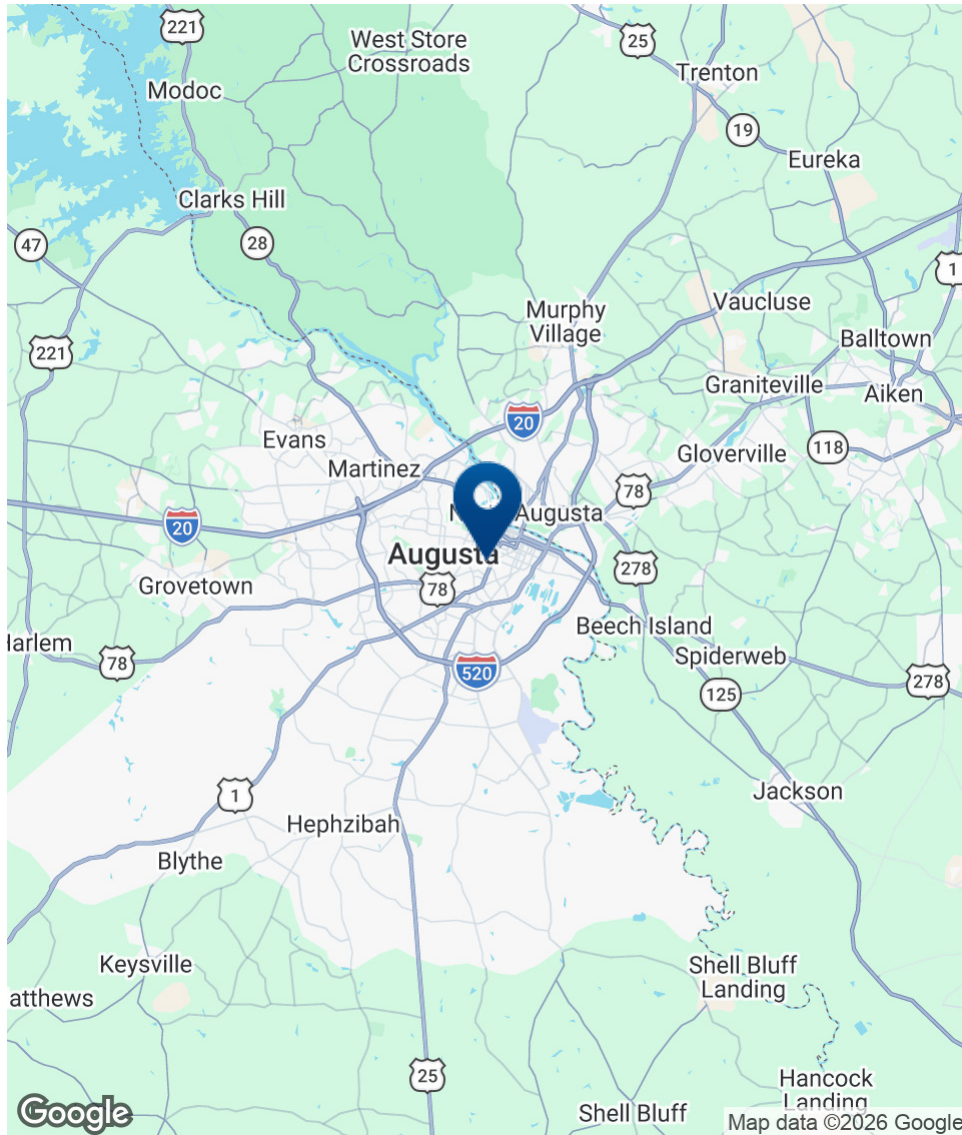
Additional Photos



**SHERMAN &
HEMSTREET**
Real Estate Company

CHARLES HOCK, SIOR, CCIM
charleswhock@aol.com
706.722.8334

Location Map



SHERMAN & HEMSTREET
Real Estate Company

CHARLES HOCK, SIOR, CCIM
charleswhock@aol.com
706.722.8334

FOR LEASE | FORMER CASTLEBERRY'S PLANT | 1621 15TH STREET, AUGUSTA, GA 30901

SHERMAN & HEMSTREET REAL ESTATE COMPANY | 4316 WASHINGTON ROAD, EVANS, GA 30809 | SHERMANANDHEMSTREET.COM